



PROFESSIONAL CHEMICAL ANCHORING SOLUTIONS

SOUDAFIX RANGE



SOUDAFIX CHEMICAL ANCHORING SOLUTIONS

As an installer, you need anchoring solutions that you can rely on unconditionally. Soudal is your trusted partner for fixing and assembly applications in the construction industry. We offer you a professional chemical anchor resin range for a very wide range of applications. Soudafix products have ETA (European Technical Assessment) certificates which guarantee performance, help with product selection and ensure value for money. This enables you to provide a professional result, which is essential when anchoring heavy construction components or reinforcement rods.



Ceiling anchoring

WHY CHOSE SOUDAFIX CHEMICAL ANCHOR?

1 FLEXIBLE LOAD CAPACITY

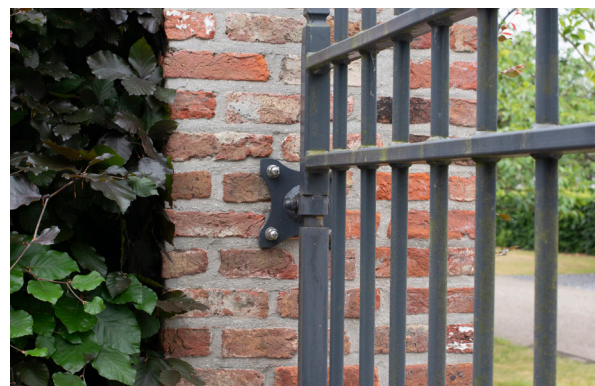
Chemical anchors give you the flexibility to adapt the load capacity according to the requirements of the application onsite. The load capacity can be increased easily by increasing the anchoring depth or the diameter of the drill hole whenever required.

2 NO DAMAGE TO THE SUBSTRATE

Because chemical anchors do not expand after application, there is no additional stress on the concrete surrounding the hole. The load is also evenly distributed across the complete surface area of the drill hole. This makes it possible to fix close to the edge of concrete substrates, without the risk of cracking. Fixing into softer base materials is also feasible.

3 WATERPROOF & AIRTIGHT

When the resin is applied it fills up the entire drill hole. This guarantees you an airtight and waterproof fixing. This avoids any corrosion risk and subsequent weakening of the fixing. Chemical anchor resin also has great gap filling properties, it can be used to fill imperfect and oversized drill holes.

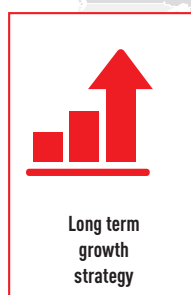
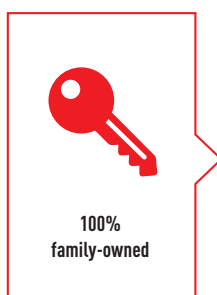


Wall anchoring



Floor anchoring

Family business



Internationalization



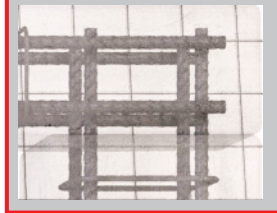
WHICH SOUDAFIX PRODUCT TO CHOOSE?

CHEMICAL ANCHORING

THREADED RODS



REBAR IN CONCRETE



SOUDAFIX
VE400-SF

MASONRY

HOLLOW



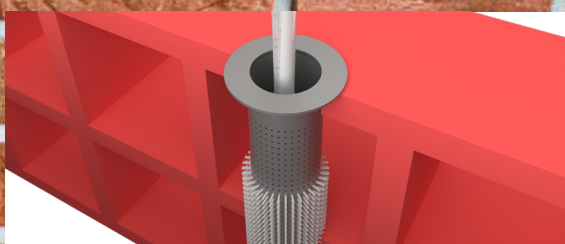
SOUDAFIX P300-SF
SOUDAFIX VE400-SF

SOLID



SOUDAFIX P300-SF
SOUDAFIX VE400-SF

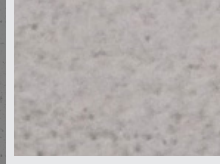
HOLLOW MASONRY



Use a plastic or metal anchor sleeve in a hollow stone or wall.

CONCRETE

UNCRAKED



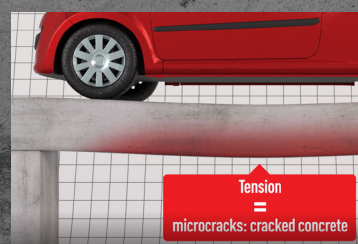
SOUDAFIX VE400-SF
SOUDAFIX P300-SF
SOUDAFIX P300-ST

CRACKED



SOUDAFIX VE400-SF

IDENTIFYING CRACKED OR UNCRACKED CONCRETE



Concrete structures flex under load. Where it stretches, micro-cracks can develop. This is called cracked concrete.

SOUDAFIX CHEMICAL ANCHOR RESINS

The Soudal Soudafix professional Chemical Anchor resin range offers comprehensive fixing solutions for most applications and substrates. Anchors can be fixed in cracked and uncracked concrete, solid and hollow masonry. We supply fully tested products with detailed ETA (European Technical Assessment) Certificates, which allow you to guarantee a reliable installation.

SOUDAFIX VE400-SF

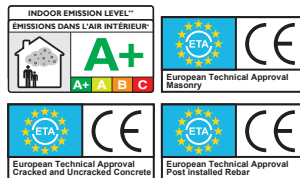
VINYLESTER RESIN BASED

Anchoring of threaded rods and anchors in cracked and uncracked concrete (ETA approval option 1). For heavy loads and masonry (18 brick types). Anchoring of post installed rebar. Fire resistance class R120. Can be applied from -10°C, in dry, damp and water filled drill holes.

PROPERTIES:

- Treaded rods:
 - Concrete: M8-M30
 - Masonry: M8-M16
- Reinforcement bar: Ø8-Ø32
- Fast curing
- Overhead application
- High chemical resistance
- Peeler cartridge: extended 18 months shelf life

- C1 Seismic resistance
- 410ml Art. n° 157694
- 280ml Art. n° 154407



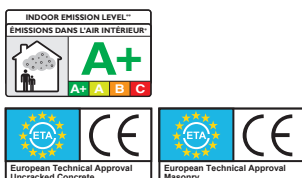
SOUDAFIX P300-SF

POLYESTER RESIN BASED

Anchoring of threaded rods in masonry (18 brick types) and uncracked concrete (ETA approval option 7). Suitable for installation in hollow and solid masonry: aerated and lightweight concrete, clay, calcium silicate bricks as well as natural stone and plasterboard walls. Can be applied from -5°C, in dry, damp and water filled drill holes.

PROPERTIES:

- Treaded rods:
 - Masonry: M8-M16
 - Uncracked concrete: M8-M24
- Fast curing
- Overhead application
- Peeler cartridge
 - extended 18 months shelf life
- 410ml Art. n° 157705



SOUDAFIX P300-ST

POLYESTER BASED WITH STYRENE

Styrene containing chemical anchor for threaded rods in uncracked concrete (ETA approval option 7). Can be applied from +5°C, in dry, damp and water filled boreholes.

PROPERTIES:

- Treaded rods:
 - Non-cracked concrete: M8-M24
- Fast curing
- Overhead application
- Peeler cartridge
 - extended 18 months shelf life
- 410ml Art. n°124956
- 300ml Art. n°124954



SOUDAFIX APPLICATION PRODUCTS

SOUDAFIX ANCHOR SLEEVES

Anchor sleeves are used for applications in hollow brickwork: insert the sleeve into the drill hole and fill it completely, so that the resin passes through the grating of the sleeve.

SOUDAFIX PLASTIC SLEEVE DIMENSIONS:

Plastic sleeves for hollow stone or other hollow constructions.

- 12x80mm : threaded rods M6-M8 - Art. 128684 (50pcs)
- 16x85mm : threaded rods M8-M10 - Art. 128685 (50pcs)
- 16x130mm : threaded rods M8-M10 - Art. 128686 (50pcs)
- 16x330mm : threaded rods M8-M10 - Art. 126688 (50pcs)
- 20x85mm : threaded rods M12-M16 - Art. 128687 (50pcs)

SOUDAFIX METAL SLEEVE DIMENSIONS:

Metal anchor sleeves which can be cut to size for deep anchoring with threaded rods in hollow stone or other hollow constructions.

- 16x1000mm : threaded rods M8-M10 - Art. 117772 (1pc)
- 20x1000mm : threaded rods M12-M16 - Art. 128683 (1pc)



410ML CAULKING GUN

Gun for coaxial 2-component cartridge of 380ml – 410ml.
Art. 103265



310ML CAULKING GUN

Gun for coaxial 2-component cartridge of 280ml - 310ml.
Art. 106617



WHITE SOUDAFIX STATIC MIXER

Static mixers for optimal mixing of 2-component chemical anchor.
Art. 117375 (5pcs)



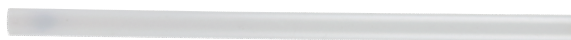
GREEN SOUDAFIX STATIC MIXER

Static mixers for optimal mixing of 2-component chemical anchor.
Art. 117596 (50pcs)



200MM SOUDAFIX STATIC MIXER EXTENSION

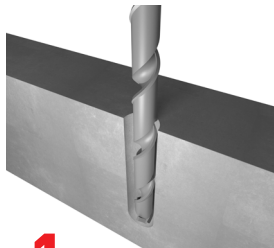
Extension piece of 200mm for the static mixers.
Art. 117771 (50pcs)



SOUDAFIX APPLICATION GUIDE

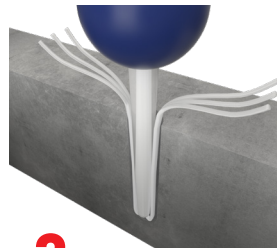
To guarantee the full tensile and shear strength of the Soudafix products, it is extremely important that the installation is carried out correctly. Skipping or careless execution of one of the steps can reduce the anchoring strength by a factor of ten.

SOLID BRICKS & CONCRETE



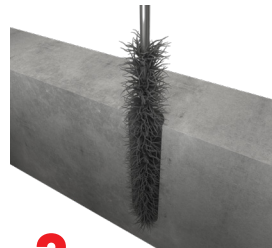
1.

Drill the hole to proper depth and diameter per specifications using a rotary hammer drill with a stop drill bit.



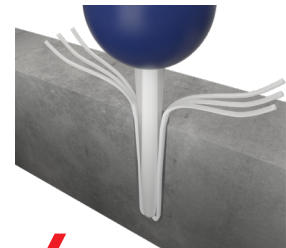
2.

Clean the hole using a blow-out bulb, pump or compressed air (4x).



3.

Clean the hole using a wire brush (4x).



4.

Clean the hole using a blow-out bulb, pump or compressed air (4x).



5.

Apply the Soudafix chemical anchor resin into the drill hole, ensuring the resin is mixing properly before application.



6.

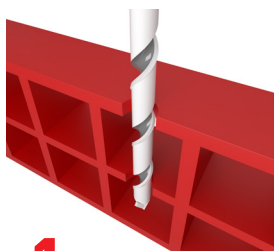
Push and turn the threaded rod or rebar into the hole containing the Soudafix chemical anchor resin.



7.

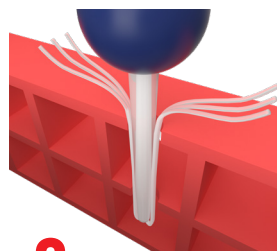
Fix the nut onto the tread, but only after full curing.

HOLLOW BRICKS



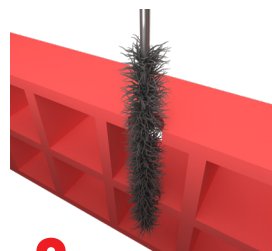
1.

Drill the hole to proper depth and diameter per specifications using a rotary hammer drill with a stop drill bit.



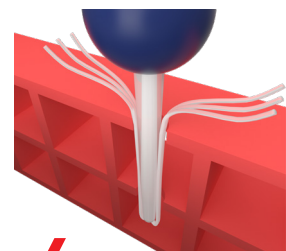
2.

Clean the hole using a blow-out bulb, pump or compressed air (4x).



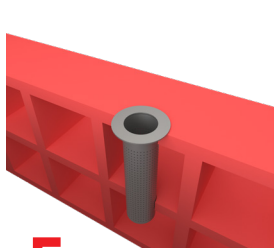
3.

Clean the hole using a wire brush (4x).



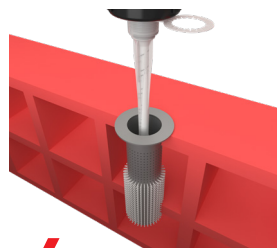
4.

Clean the hole using a blow-out bulb, pump or compressed air (4x).



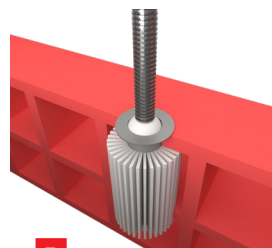
5.

Insert Anchor Sleeve into the hole.



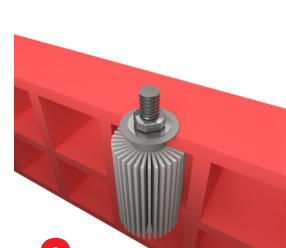
6.

Apply the Soudafix chemical anchor resin into the sleeve in the drill hole, ensuring the resin is mixing properly before application.



7.

Push and turn the threaded rod into the hole containing the Soudafix chemical anchor resin.



8.

Fix the nut onto the tread, but only after full curing.



		SOUDAFIX VE400-SF	SOUDAFIX P300-SF	SOUDAFIX P300-ST
--	--	------------------------------	-----------------------------	-----------------------------

FORMULATION	Styrene	Free	Free	With styrene
--------------------	---------	------	------	--------------

BASE MATERIAL	Masonry	M8 - M16 (18 brick types)	M8 - M16 (18 brick types)	
	Uncracked Concrete	M8 - M30	M8 - M24	M8 - M24
	Cracked Concrete	M8 - M30		
	Rebar Concrete (post installed)	Ø8 - Ø32		

APPLICATION SURFACES	Dry & Wet/Moist Concrete			
	Flooded holes	(Except rebar)		

STEEL TYPE per USE CONDITION	Dry Internal	Zinc coated, stainless, high corrosion resistant	Stainless, high corrosion resistant	Zinc coated, stainless, high corrosion re-sistant
	Not aggressive external exposure and permanent internal damp	Stainless, high corrosion resistant	Stainless, high corrosion resistant	Stainless, high corrosion resistant
	Aggressive external* exposure and permanent internal damp	High corrosion resistant	High corrosion resistant	High corrosion resistant

* Seawater, chloride atmosphere or extreme chemical pollution

APPROVALS	European Technical Assessment	ETA-21/0170 ETA 10/0167 ETA 12/0558 (Option 1)	ETA 13/0064 ETA 11/0447 (Option 7)	ETA 22/0077 (Option 7)
	Fire Resistance	R120		
	Seismic	C1		



SOUDAFIX

CHEMICAL ANCHORING FOR THE PROFESSIONAL

ETA



ETA certified
for assured quality

Applied with a standard
applicator gun used for
silicones and adhesives

Fast
curing

Full range
in 2 cartridge sizes

Peeler cartridge:
18 months shelf life
(SOUDAFIX P300-ST: 12 months)

WIDE APPLICATION RANGE FOR:

- Treaded rods (M8 – M30) and rebar (Ø8 - Ø32mm)
 - Cracked and uncracked concrete
 - Hollow and solid masonry
- Application temperature -10°C up to 40°C
- Dry, damp and water filled drill holes
 - R120 fire resistant
 - C1 earthquake proof



SOUDAL UK

SOUDAL HOUSE, UNIT 1, CENTURION WAY, CENTURION PARK

TAMWORTH

B77 5PN

UNITED KINGDOM

EMAIL: SALESUK@SOUDAL.COM

TEL.: +44 1827-261.092

Your distributor

