

May Cottage

Original Design by Thea Dueck

The
Victoria
SAMPLER



May Cottage

by Thea Dueck of the Victoria Sampler

The May Cottage is the next 2024 Stitch-Along (SAL) for our FB Chat Group! This CREATIVE event is ongoing throughout 2024. We always love to see shared pictures of your stitched Monthly Cottages in our Chat Group, when you have a moment to post. Also, please hit 'like' or 'love', to compliment others works, and if you have a moment, reply with some specially encouraging comments to encourage our participants. We look forward so much to your interpretation of these Monthly Cottages. You have so many choices as to what colours, threads, beads, charms, or linen you decide to use, but you can also just use the colours I have shown to help you with your creativity.

On 28ct linen, the Monthly Cottage patterns will be about 3.6" high x 3" wide. So, if you leave a margin of about 2 inches all the way round, your minimum 28ct linen piece would be cut about 7.6"h x 7"w. If you're stitching on 32 ct linen, the design will be slightly smaller.

For our Creative SAL newbies: You may have noticed that there is no 'materials list' with colours and floss brands. This Stitch Along is a creativity exercise collaboration with your fellow Chat Group members. You get to choose how many colours and what they should be. You can get your threads ready by choosing your own linen and colours, and then either use them, or change them entirely as you see the pattern emerging. Lay out maybe 10-15 colours on linen of our choice to start even if they're not exactly right.. It's a fun time for all. FYI, The fun is in the creativity!! :)

If you like, participants can announce their intention to "Stitch Along" with this event.. by posting a photo of your chosen linen and some of the threads you're planning to stitch with in the MAIN group. Then, each week, we hope to see photo posts from each person to show the finished section you've completed..! We will all encourage, applaud and help our intrepid Mystery Stitchers to completion each month.. but no pressure!

"Monthly Cottages of 2024 - May"
©Copyright 2024 Thea Dueck
The Victoria Sampler
Email: Info@victoriasampler.com
Website: www.victoriasampler.com



EACH SQUARE EQUALS 2 THREADS OF FABRIC

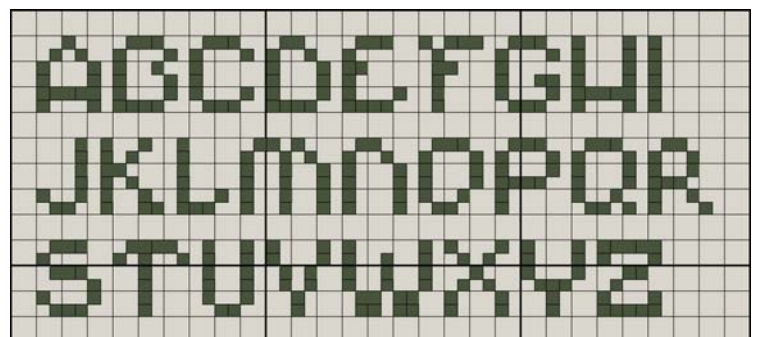


MAIN CHART

COPYRIGHT©2024 THEA DUECK

STITCHING INSTRUCTIONS:

- Design area for ornament:** 50h x 40w (3.6" h x 2.9" w)
- Model:** 28ct (or 32ct) Linen or other evenweave colour of your choice
- Cut fabric:** 7.6" x 7" to finish as ornament (2" all around). If you want to frame, please add at least 3" all the way around - cut 9.6" x 9".



INSTRUCTIONS :

Design area for ornament front:

50h x 40w (3.6”h x 2.9”w)

Model: 28ct Raw Linen Cashel:

(cut fabric: 7.6” x 7” for finishing)

1. Cross Stitch with 2 strands of any floss, according to colours on Main Chart. Refer to Diagram A.
2. Back Stitch or Straight Stitch the vines on top of the Cross Stitches as shown on Main Chart. Make a half stitch to show the bird's beaks and use a backstitch with one strand to define it.
3. Work Lazy Daisy Stitches on the vines, on top of Cross Stitches for grass. Diagram B.
5. Work Ray Stitches over 4 fabric threads, for the band above the word May. You can add beads or a cross stitches for the flowers to add variety if you like. Diagram C.
6. Work Petit Cross Stitch for the Lettering of the Month. Diagram D.
7. Work a Rhodes Heart beside the word April. Diagram E.



MAIN CHART

COPYRIGHT©2024 THEA DUECK

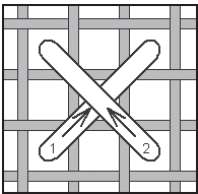


DIAGRAM A.
Cross Stitch
over Two fabric
intersections

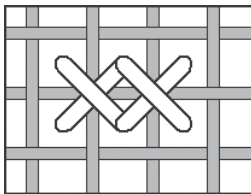


DIAGRAM D. Petit Cross
Stitch over ONE
fabric
intersection

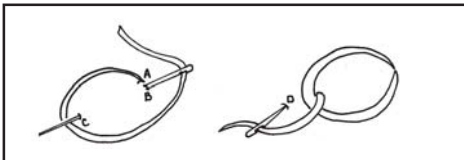
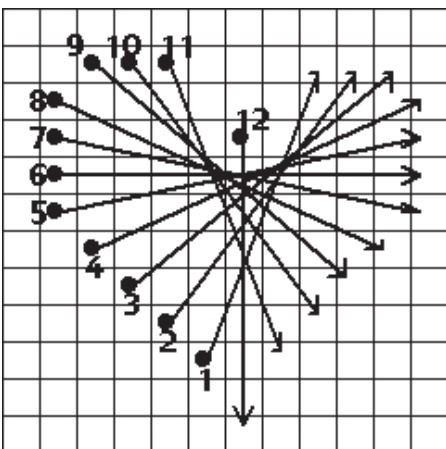


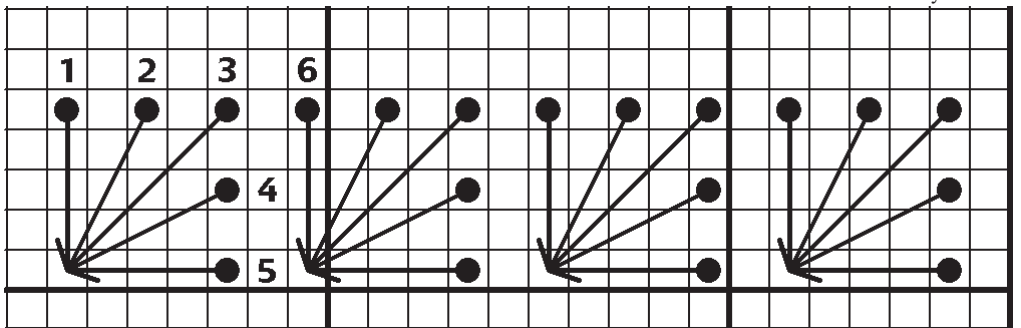
DIAGRAM B. Lazy Daisy Stitch

DIAGRAM D. Rhodes Heart



Stitch Diagrams COME UP AT THE DOT AND GO DOWN AT THE ARROW

DIAGRAM C. Ray Stitch



“May Cottage 2024”

©Copyright 2024 Thea Dueck

The Victoria Sampler

Email: Info@victoriasampler.com

Website: www.victoriasampler.com

THEA DUECK DESIGNS FROM
THE VICTORIA SAMPLER

Website: www.victoriasampler.com

The Victoria Sampler, Sidney, B.C.

The
Victoria
SAMPLER