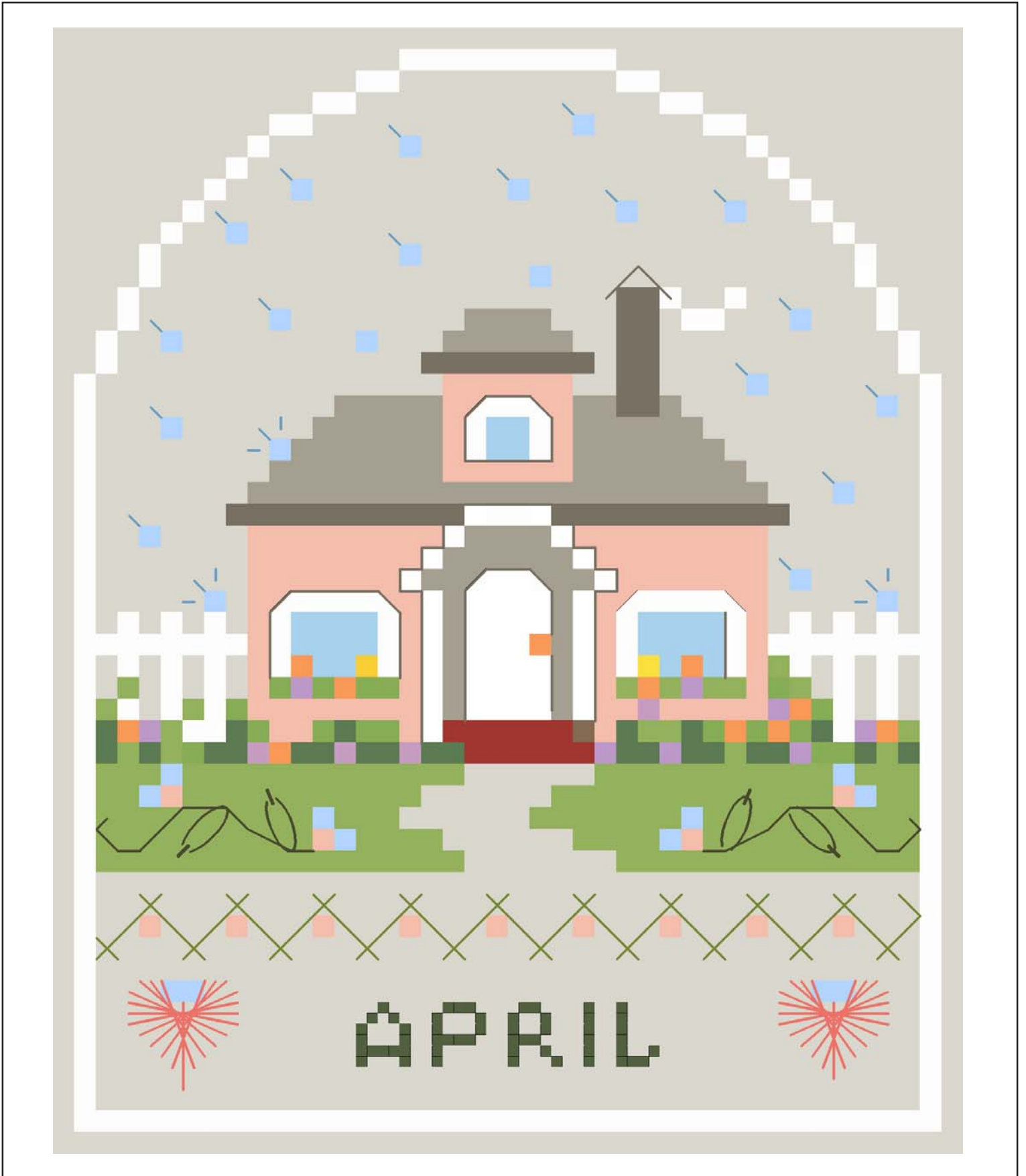


April Cottage

Original Design by Thea Dueck

The
Victoria
SAMPLER



April Cottage

by Thea Dueck of the Victoria Sampler

The April Cottage is the next 2024 Stitch-Along (SAL) for our FB Chat Group! *This CREATIVE event is ongoing throughout 2024. We always love to see shared pictures of your stitched Monthly Cottages in our Chat Group, when you have a moment to post. Also, please hit 'like' or 'love', to compliment others works, and if you have a moment, reply with some specially encouraging comments to encourage our participants. We look forward so much to your interpretation of these Monthly Cottages. You have so many choices as to what colours, threads, beads, charms, or linen you decide to use, but you can also just use the colours I have shown to help you with your creativity.*

On 28ct linen, the Monthly Cottage patterns will be about 3.6" high x 3" wide. So, if you leave a margin of about 2 inches all the way round, your minimum 28ct linen piece would be cut about 7.6"h x 7"w. If you're stitching on 32ct linen, the design will be slightly smaller.

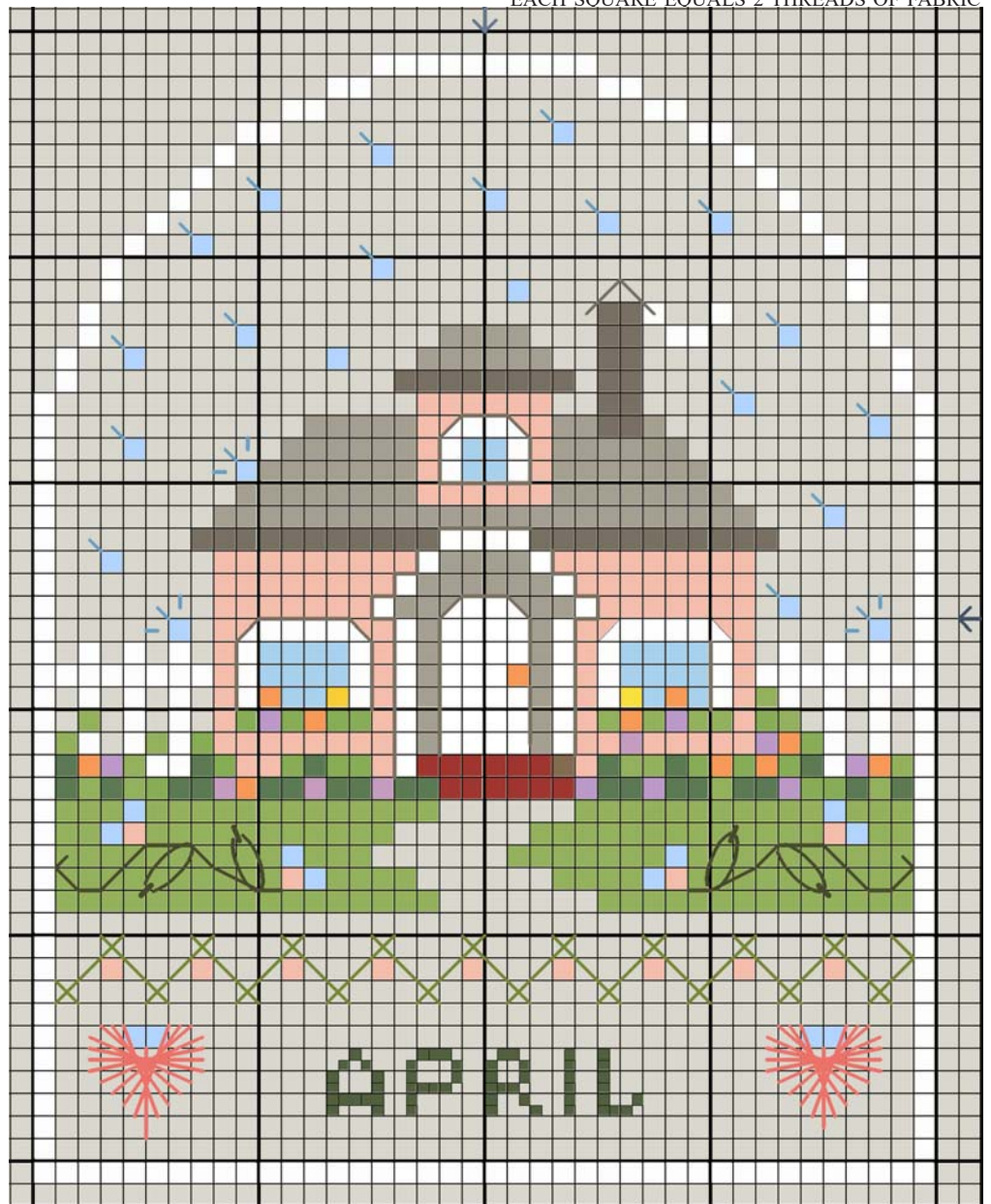
For our Creative SAL newbies: You may have noticed that there is no 'materials list' with colours and floss brands. This Stitch Along is a creativity exercise collaboration with your fellow Chat Group members. You get to choose how many colours and what they should be. You can get your threads ready by choosing your own linen and colours, and then either use them, or change them entirely as you see the pattern emerging. Lay out maybe 10-15 colours on linen of your choice to start even if they're not exactly right.. It's a fun time for all. FYI, The fun is in the creativity!! :)

If you like, participants can announce their intention to "Stitch Along" with this event.. by posting a photo of your chosen linen and some of the threads you're planning to stitch with in the MAIN group. Then, each week, we hope to see photo posts from each person to show the finished section you've completed..! We will all encourage, applaud and help our intrepid Mystery Stitchers to completion each month.. but no pressure!

"April Cottage 2024"
©Copyright 2024 Thea Dueck
The Victoria Sampler
Email: Info@victoriasampler.com
Website: www.victoriasampler.com

The
Victoria
SAMPLER

EACH SQUARE EQUALS 2 THREADS OF FABRIC



MAIN CHART

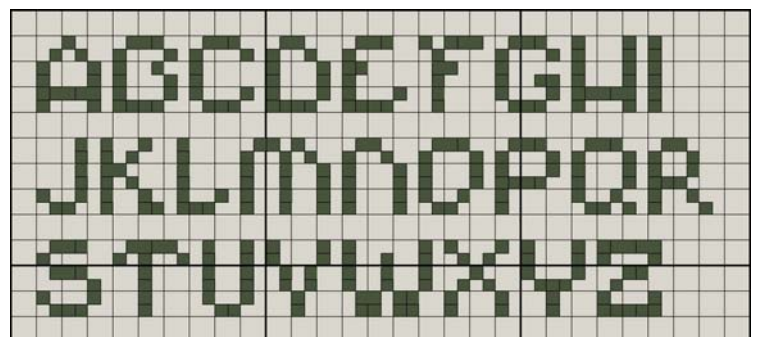
COPYRIGHT©2024 THEA DUECK

STITCHING INSTRUCTIONS:

Design area for ornament: 50h x 40w (3.6" h x 2.9" w)

Model: 28ct (or 32ct) Linen or other evenweave colour of your choice

Cut fabric: 7.6" x 7" to finish as ornament (2" all around). If you want to frame, please add at least 3" all the way around - cut 9.6" x 9".



INSTRUCTIONS :

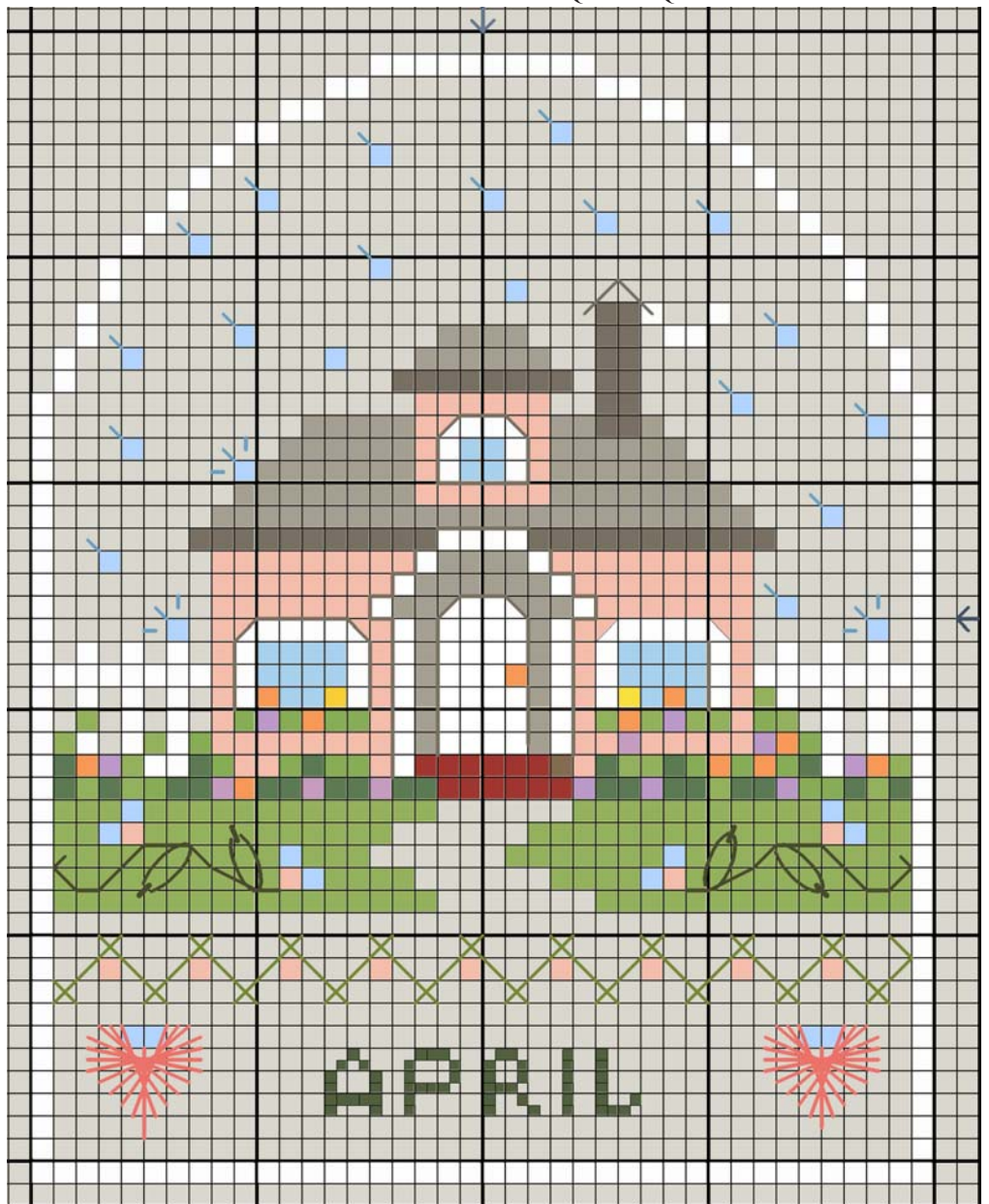
Design area for ornament front:

50h x 40w (3.6”h x 2.9”w)

Model: 28ct Raw Linen Cashel:

(cut fabric: 7.6” x 7” for finishing)

1. Cross Stitch with 2 strands of any floss, according to colours on Main Chart. Refer to **Diagram A**.
2. Back Stitch the vines on top of the Cross Stitches and around the door, windows and top of the chimney as shown on Main Chart. Make a tiny straight stitch with one strand of floss, at the upper left of each ‘raindrop’ cross stitch.
3. Work Lazy Daisy Stitches on the vines, on top of Cross Stitched grass. **Diagram B**.
4. Work Herringbone Stitch over 6 fabric threads, for the band above the word April. You can add a bead or a cross stitch for variety if you like. **Diagram C**.
5. Work Petit Cross Stitch for the Lettering of the Month. **Diagram D**.
6. Work a Rhodes Heart beside the word April. **Diagram E**.



MAIN CHART

COPYRIGHT©2024 THEA DUECK

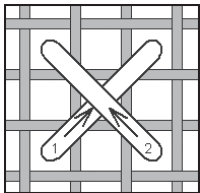


DIAGRAM A. Cross Stitch over Two fabric intersections

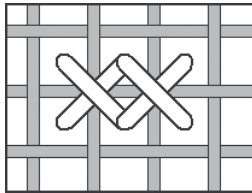


DIAGRAM D. Petit Cross Stitch over ONE fabric intersection

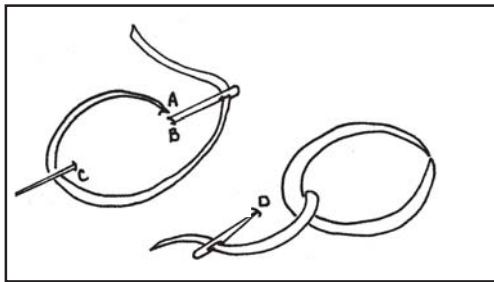
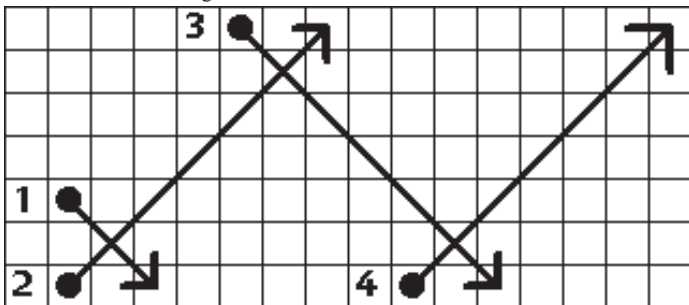


DIAGRAM B. Lazy Daisy Stitch

DIAGRAM C. Herringbone Stitch



Stitch Diagrams

COME UP AT THE DOT
AND GO DOWN AT THE
ARROW

DIAGRAM D. Rhodes Heart

