

Premier[®] PROGRAMMABLE USB FAN INSTRUCTION MANUAL

Installing your Software

Insert the DISC into your computer's disc drive. Choose the needed program for your operating system and save it on the hard drive of your computer



Using your Software

Double click on the LedFan Editor Icon to start the program.

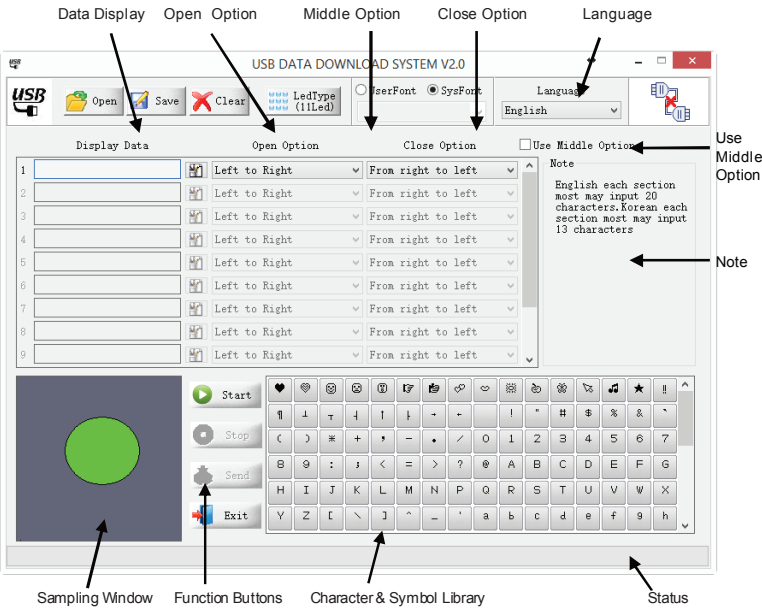
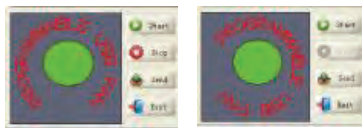


Fig. 3

Fig. 4



3. After creating your message click on the Open Option Button (Fig. 5) to select how the fan will display your message.
4. Once you have selected your Open Options, click on the Close Screen Option button to select how the program closes the message on the fan. The same options as the Open Options are available (Fig. 6)
5. You can also select how the program handles the message once displayed by clicking on the Turn Option button. (Fig. 7) The Use Middle Option must be chosen.



6. Upon completion of the above steps you may preview your message in the sampling window by clicking on the Start button (Fig. 8)
7. To end the preview, click the Stop button in the sampling window (Fig. 9).
8. To save the message click on the save button.

CONTENTS:

- 1 x Programmable Usb Fan
- 1 x USB Data Cable
- 1 x Instruction Manual

Specifications

Working Volt:	DC 5 V
Working Current:	≤350 mA
Product Length:	40c m
Weight:	58 g
Fan Diameter:	Ø90 mm
Switch:	Keyswitch

FUNCTION BUTTONS:



- ❖ Start: Activate sampling window
- ❖ Stop: Deactivate sampling window
- ❖ Download: Download a message file from the computer to the Fan
- ❖ Exit: Exit from the program
- ❖ Open: Open a saved message file
- ❖ Save: Save the display message
- ❖ Clear: Clear selected data box
- ❖ Editor: Activate the editing window

DOWNLOADING FILES

⚠ WARNINGS

Make sure your fan is OFF, To connect the computer to download the file.

1. Connect the USB Data Cable to a USB port on your computer and to the Data Input Port on your fan.



Fig. 1

After connecting with the USB fan, the computer will find the software of the USB fan automatically. The send button will change from gray to black while the LED lights flash one by one, which proves that the connection is successful. (Fig.2).



Fig.2

2. Using the mouse, move the cursor to the Data Display area (Fig.3) of the Editor screen. Click on a blank message line and type in desired letters or numbers and/or click on the symbols area (Fig.4) to insert the desired symbols. You can create up to eight (8) messages at a maximum of 20 characters each including spaces.

9. The programmed display message will be sent to the USB fan after pressing the send button. The connection status will be shown in green while the data is transmitting. The connection status will be full of green when the data transfer is completed. (Fig. 10).



10. Disconnect the Data Cable from the Fan and your computer. Insert USB plug into the computer and your fan Press the power switch to start the fan and display your messages.(Fig.11)



Fig.11

THE EDITOR

With the help of the editor, it is possible to modify and create characters or symbols of your own. Move the cursor to the editor button on the right of the data display area. The editing window will open. You can manually click into any field box in the window. The display area will be in black. The data can be easy to clear, which will be in white.

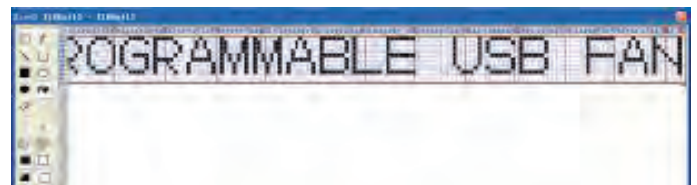


Fig.12

SYSTEM REQUIREMENTS

This software is designed for use on computers running Windows XP, Vista, Windows 7 operating systems. Minimum 6 MB storage space required on your hard drive.