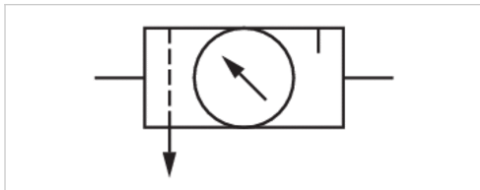


# Maintenance unit, 2-part, Series AS2-ACD

- 1/4 NPT, 3/8 NPT
- filter porosity 5 µm
- lockable
- for padlocks
- with pressure gauge



Version	2-in-1, Can be assembled into blocks
Parts	Filter pressure regulator, Lubricator
Mounting orientation	vertical
Working pressure min./max.	See table below
Ambient temperature min./max.	-10 ... 50 °C
Medium temperature min./max.	-10 ... 50 °C
Medium	Compressed air, Neutral gases
Regulator type	Diaphragm-type pressure regulator
Regulator function	with relieving air exhaust
Adjustment range min./max.	0.5 ... 8 bar
Pressure supply	single
Filter reservoir volume	28 cm <sup>3</sup>
Filter element	exchangeable
Condensate drain	See table below
Lubricator reservoir volume	40 cm <sup>3</sup>
Type of filling	Manual oil filling, Semi-automatic oil filling during operation
Weight	See table below

## Technical data

Part No.	Port	Flow Q <sub>n</sub>	Working pressure min./max.	Condensate drain	Reservoir	Protective guard
R432000693	1/4 NPT	1800 l/min	1.5 ... 16 bar	fully automatic, open without pressure	Polycarbonate	Polyamide
R432000694	1/4 NPT	1800 l/min	0 ... 16 bar	fully automatic, closed without pressure	Polycarbonate	Polyamide
R432000695	1/4 NPT	1800 l/min	1.5 ... 16 bar	semi-automatic, open without pressure	Die cast zinc	-
R432000696	1/4 NPT	1800 l/min	1.5 ... 16 bar	fully automatic, open without pressure	Die cast zinc	-
R432000697	1/4 NPT	1800 l/min	0 ... 16 bar	fully automatic, closed without pressure	Die cast zinc	-
R432000698	3/8 NPT	2000 l/min	1.5 ... 16 bar	semi-automatic, open without pressure	Polycarbonate	Polyamide
R432000699	3/8 NPT	2000 l/min	1.5 ... 16 bar	fully automatic, open without pressure	Polycarbonate	Polyamide
R432000700	3/8 NPT	2000 l/min	0 ... 16 bar	fully automatic, closed without pressure	Polycarbonate	Polyamide
R432000701	3/8 NPT	2000 l/min	1.5 ... 16 bar	semi-automatic, open without pressure	Die cast zinc	-
R432000702	3/8 NPT	2000 l/min	1.5 ... 16 bar	fully automatic, open without pressure	Die cast zinc	-
R432000703	3/8 NPT	2000 l/min	0 ... 16 bar	fully automatic, closed without pressure	Die cast zinc	-

Part No.	ATEX	Weight
R432000692	suitable for ATEX	0.633 kg
R432000693	suitable for ATEX	0.676 kg
R432000694	suitable for ATEX	0.676 kg

Part No.	ATEX	Weight
R432000695	suitable for ATEX	0.633 kg
R432000696	suitable for ATEX	0.676 kg
R432000697	suitable for ATEX	0.676 kg
R432000698	suitable for ATEX	0.633 kg
R432000699	suitable for ATEX	0.676 kg
R432000700	suitable for ATEX	0.676 kg
R432000701	suitable for ATEX	0.633 kg
R432000702	suitable for ATEX	0.676 kg
R432000703	-	0.676 kg

Nominal flow  $Q_n$  with secondary pressure  $p_2 = 6$  bar at  $\Delta p = 1$  bar

## Technical information

The pressure dew point must be at least 15 °C under ambient and medium temperature and may not exceed 3 °C .

Note: Polycarbonate reservoirs are susceptible to solvents, supplementary information can be found at "Customer information".

These pneumatic components with NPT or inch thread dimensions are only available from our US sales organization.

A change in the flow direction (from air supply on the left to air supply on the right) occurs by rotating installation by 180° about the vertical axis. Please see the operating instructions for further details.

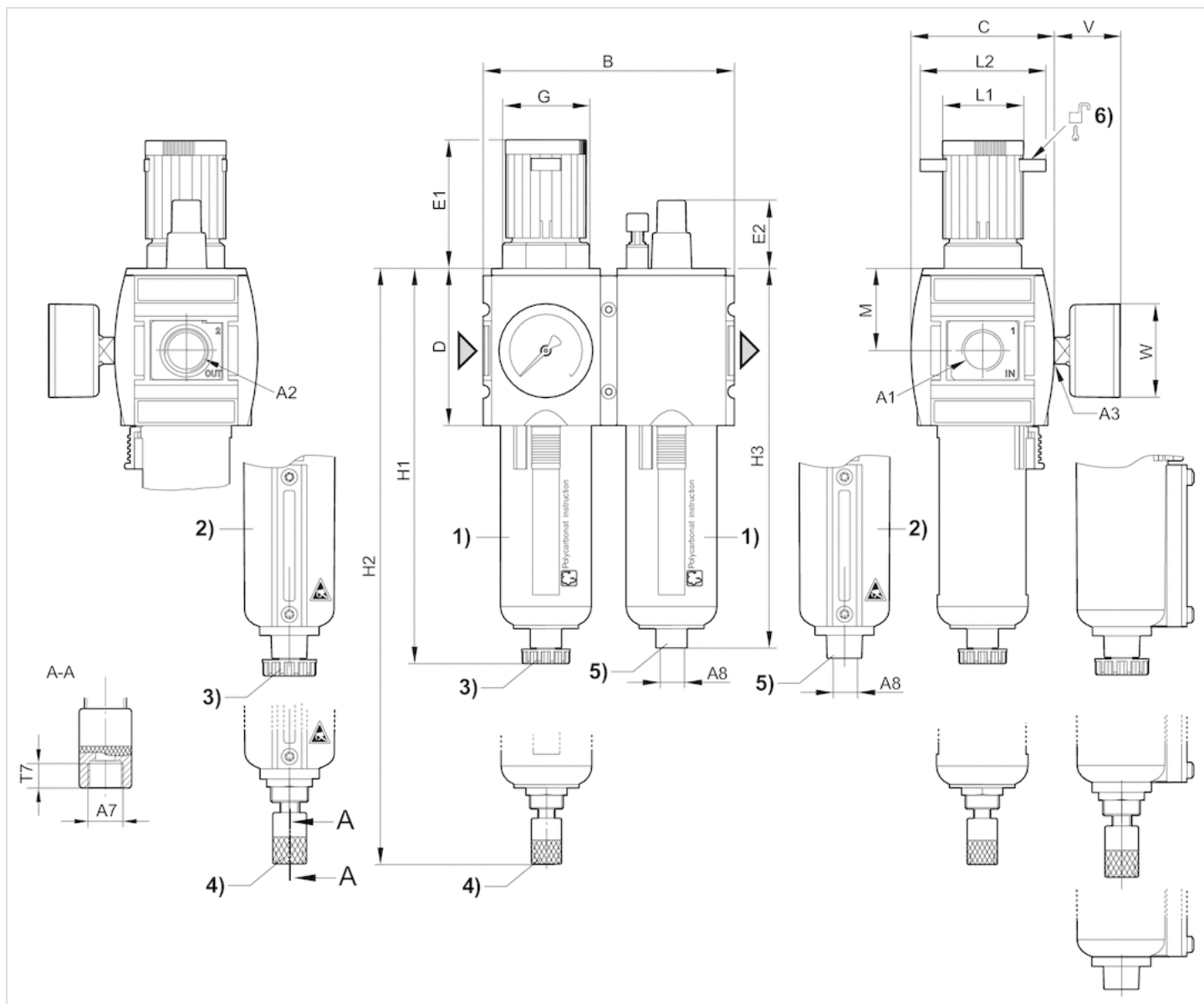
Oil dosing at 1000 l/min,[drops/min] 1-2

## Technical information

Material	
Housing	Polyamide
Front plate	Acrylonitrile butadiene styrene
Seals	Acrylonitrile butadiene rubber
Threaded bushing	Die cast zinc
Reservoir	Polycarbonate, Die cast zinc
Protective guard	Polyamide
Filter insert	Polyethylene

# Dimensions

## Dimensions



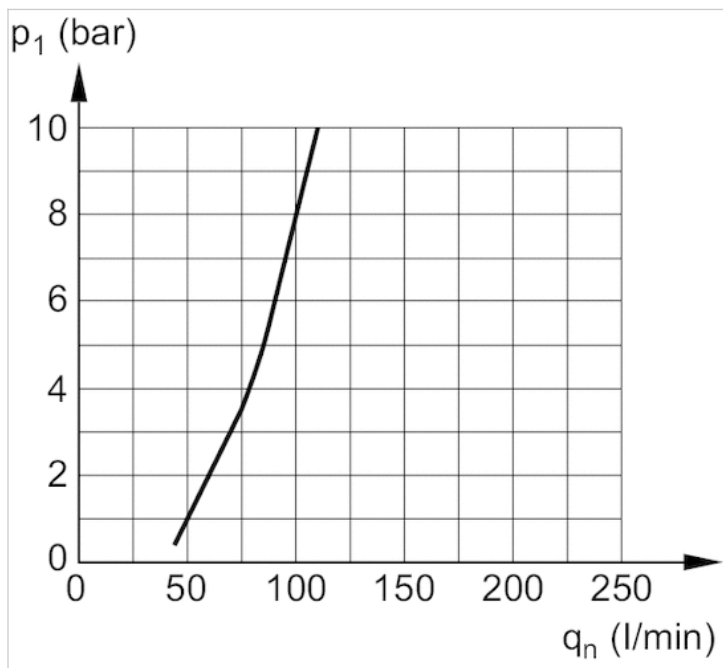
- A1 = input A2 = output A3 = pressure gauge connection
- A7 = condensate drain
- 1) Plastic reservoir and protective guard with window
- 2) Metal reservoir with level indicator
- 3) Semi-automatic condensate drain
- 4) Fully automatic condensate drain
- 5) Port for semi-automatic oil filling
- 6) Mounting option for padlocks; max. shackle Ø 8

## Dimensions in inches

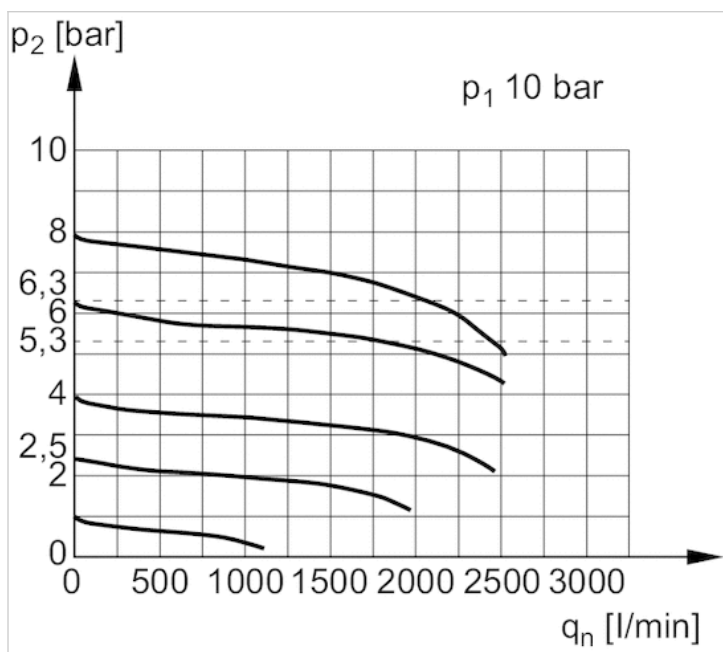
A1	A2	A3	A7	A8	B	C	D	E1	E2	G	H1	H2	H3	M	L1	L2	T7	V	W
1/4 NPT	1/4 NPT	1/4 NPT	1/8 NPT	1/8 NPT	4.09	2.32	2.56	2.28	1.16	M36x1,5	6.44	7.11	6.18	1.34	1.34	2.13	0.34	1.46	1.97
3/8 NPT	3/8 NPT	1/4 NPT	1/8 NPT	1/8 NPT	4.09	2.32	2.56	2.28	1.16	M36x1,5	6.44	7.11	6.18	1.34	1.34	2.13	0.34	1.46	1.97

## Diagrams

## Lubricator activation margin



$p_1$  = working pressure  
 $q_n$  = nominal flow

Flow rate characteristic ( $p_2$ : 0.5 - 8 bar)

$p_1$  = Working pressure  
 $p_2$  = Secondary pressure  
 $q_n$  = Nominal flow