

## Features:

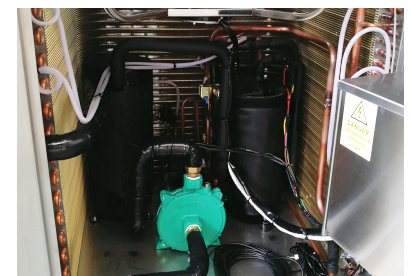
- Stainless steel casing
- Superior Mitsubishi Compressor
- 5 Metres of programmer cable
- Cascade any number of units
- Volt Free Switching control
- Heating & cooling functions
- Intelligent defrosting
- Built-in powerfull wilo pump
- Precision electronic expansion valve
- High efficiency heat exchanger
- Refrigerant diagnostic gauges
- Working range +43 to -15
- 5 Year Warranty\*

\*see warranty terms and conditions



## Specifications:

Model	CE-iH10-25
ERP Rating	A++
Rated Capacity @35°C Water/ 20°C Ambient	24.1kw
Rated Capacity @35°C Water/ 7°C Ambient	19.2kw
Rated Capacity @45°C Water/ 20°C Ambient	21.1kw
Rated Capacity @45°C Water/ 7°C Ambient	17.8kw
Rated Capacity @7°C Water/ 25°C Ambient	16.5kw
Rated Power Input	6.5kw/26.5A
Max Power Input	8.9kw/36.5A
Compressor Make/Model	mitsubishi/LNB53FCFMC
Noise	≤52dB(A)
Power Supply	220-240v AC-50Hz
Outlet Water Temperature	35°C-60°C
Protection Class	IPX4
Anti-electric Shock Class	Class I
Refrigerant/Charge	R410A-5500g
Minimum Water Flow Required	4.3m <sup>3</sup> /h
Water Pump Model	Wilo PUN-601EH
Water Connections	1" Male
Climate Type	-15~43°C
Product Dimension L x W x H	850/806/935mm
Net Weight	133kg



Hinged door panel for easy installation & access



Intelligent touch screen controller