

Features:

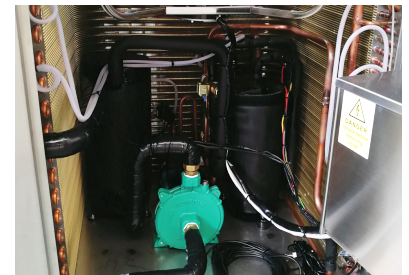
- Stainless steel casing
- Superior Mitsubishi Compressor
- 5 Metres of programmer cable
- Cascade any number of units
- Volt Free Switching control
- Heating & cooling functions
- Intelligent defrosting
- Built-in powerfull wilo pump
- Precision electronic expansion valve
- High efficiency heat exchanger
- Refrigerant diagnostic gauges
- Working range +43 to -15
- 5 Year Warranty*

*see warranty terms and conditions



Specifications:

Model	CE-iH10-25-3PH
ERP Rating	A++
Rated Capacity @35°C Water/ 20°C Ambient	24.2kw
Rated Capacity @35°C Water/ 7°C Ambient	19.1kw
Rated Capacity @45°C Water/ 20°C Ambient	21.2kw
Rated Capacity @45°C Water/ 7°C Ambient	17.7kw
Rated Capacity @45°C Water/ -3°C Ambient	13.8kw
Rated Capacity @7°C Water/ 35°C Ambient	16.4kw
Rated Power Input	6.4kw/15.3A
Max Power Input	8.8kw/19.9A
Compressor Make/Model	MITSUBISHI/LNB53FCAMC
Noise	≤70dB(A)
Power Supply	380-415v AC-50Hz
Outlet Water Temperature	35°C-60°C
Protection Class	IPX4
Anti-electric Shock Class	Class I
Refrigerant/Charge	R410A-5500g
Minimum Water Flow Required	4.3m ³ /h
Water Pump Model	Wilo PUN-601EH
Water Connections	1" Male
Climate Type	-15~43°C
Product Dimension L x W x H	850/810/940mm
Net Weight	145kg



Hinged door panel for easy installation & access



Intelligent touch screen controller