



Owners Manual

VOLKSWAGEN BUS TYPE 2 (T2 1967-1971)



WARNING



Please read and understand this manual before installing your EPAS kit.

The installation of this system should be done by a professional mechanic or a very knowledgeable amateur. You will be cutting and splicing your steering column, therefore EPAS Performance will not be held responsible for any malpractice. Caution should be taken when installing the electric motor: no impacts, shocks or hammering should be done to the unit. For aesthetic reason, you may choose to paint the assembly either in black or the color of your steering column to conserve the original look.

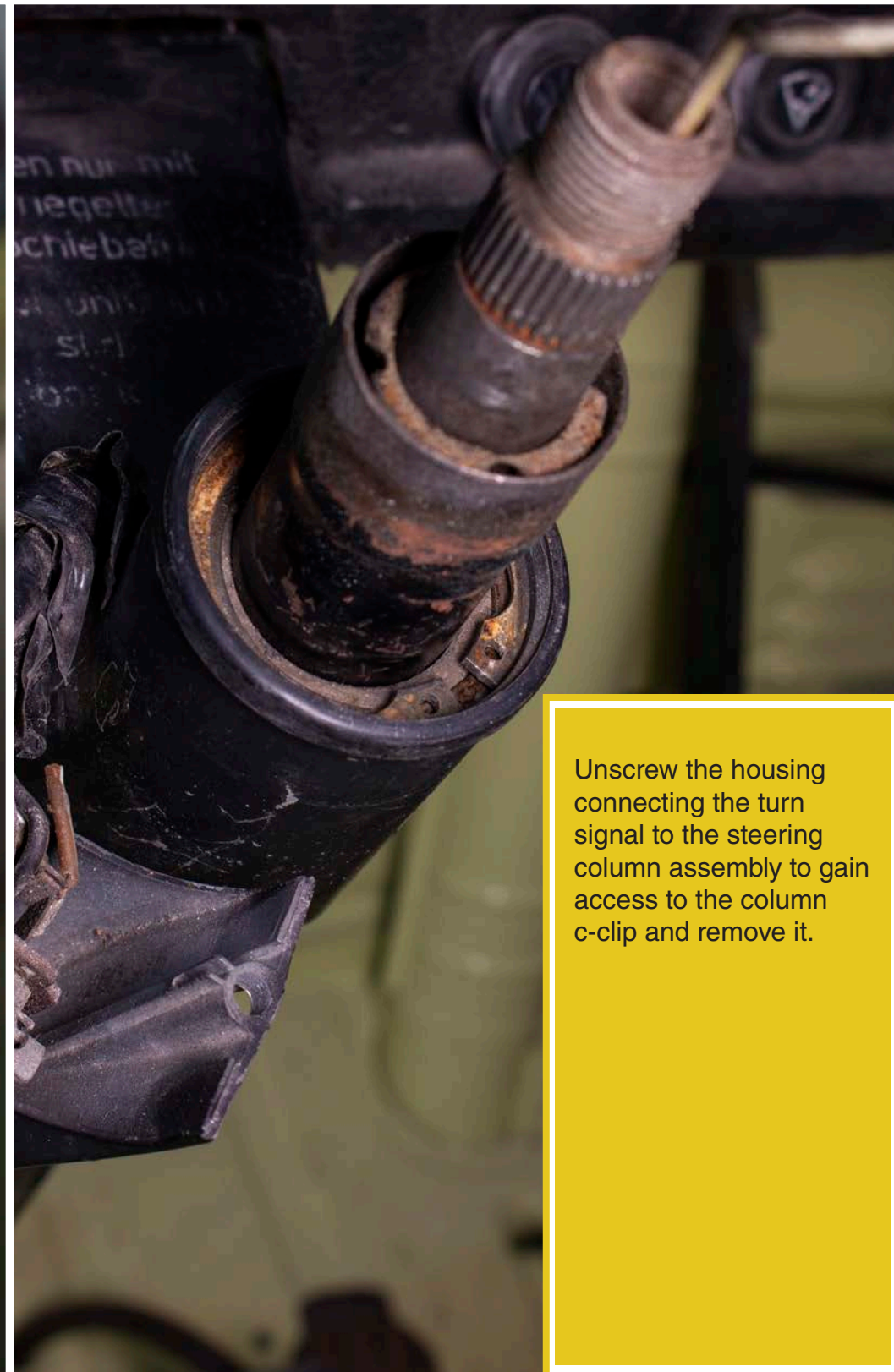
For a complete understanding, we strongly suggest to read this owner's manual prior to any installation. **Should you have any questions or concerns feel free to contact us at (941) 893-5427 or visit our website for installation videos.**

EPAS Performance wishes you thousands of enjoyable miles with your new Electric Power Steering!

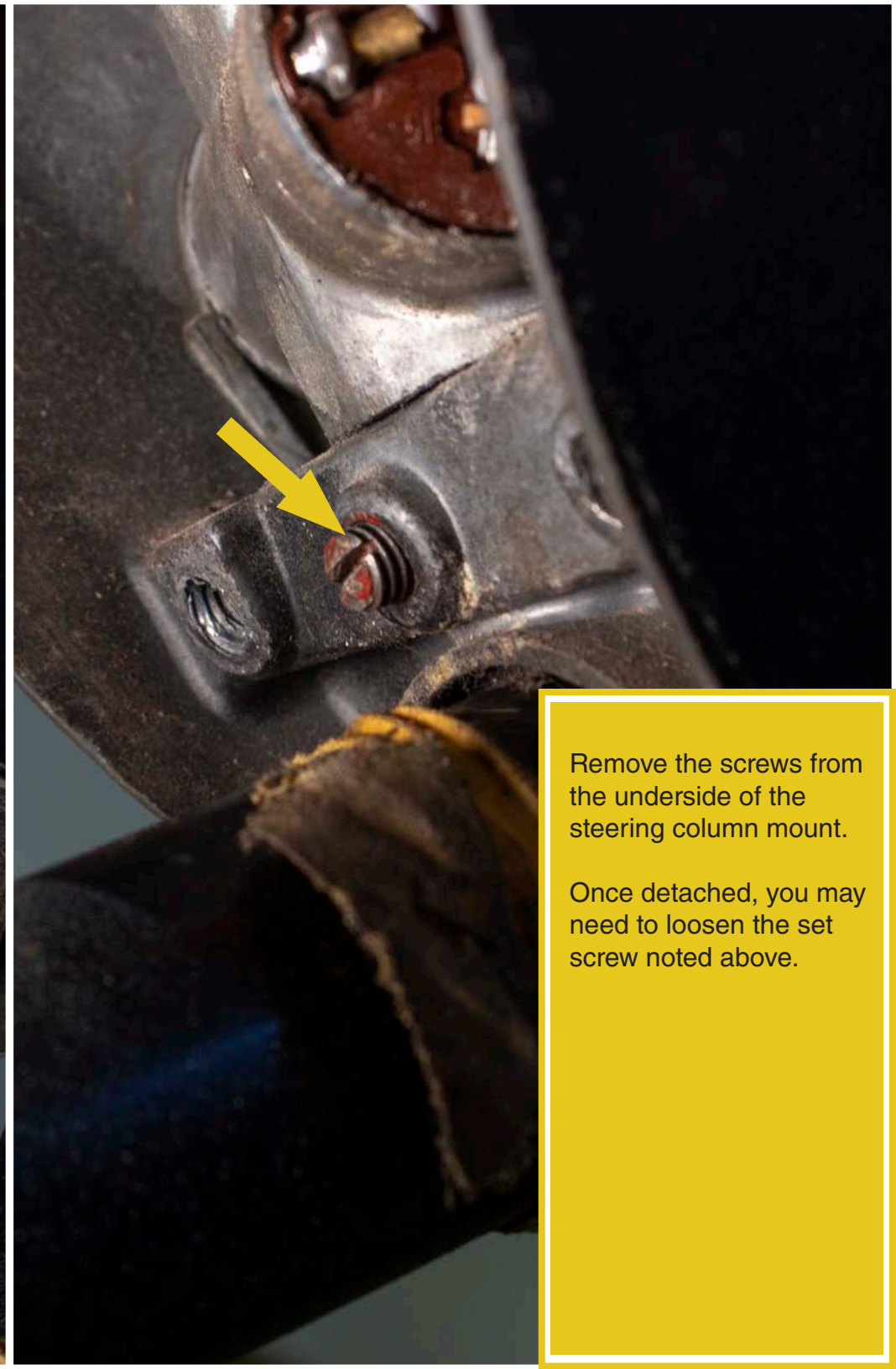


To begin installing your EPAS system you will need to access the steering box underneath your vehicles front end.

Locate the bolt that secures the rag joint in place. To remove it you will have to flatten the metal tab holding the bolt in place.

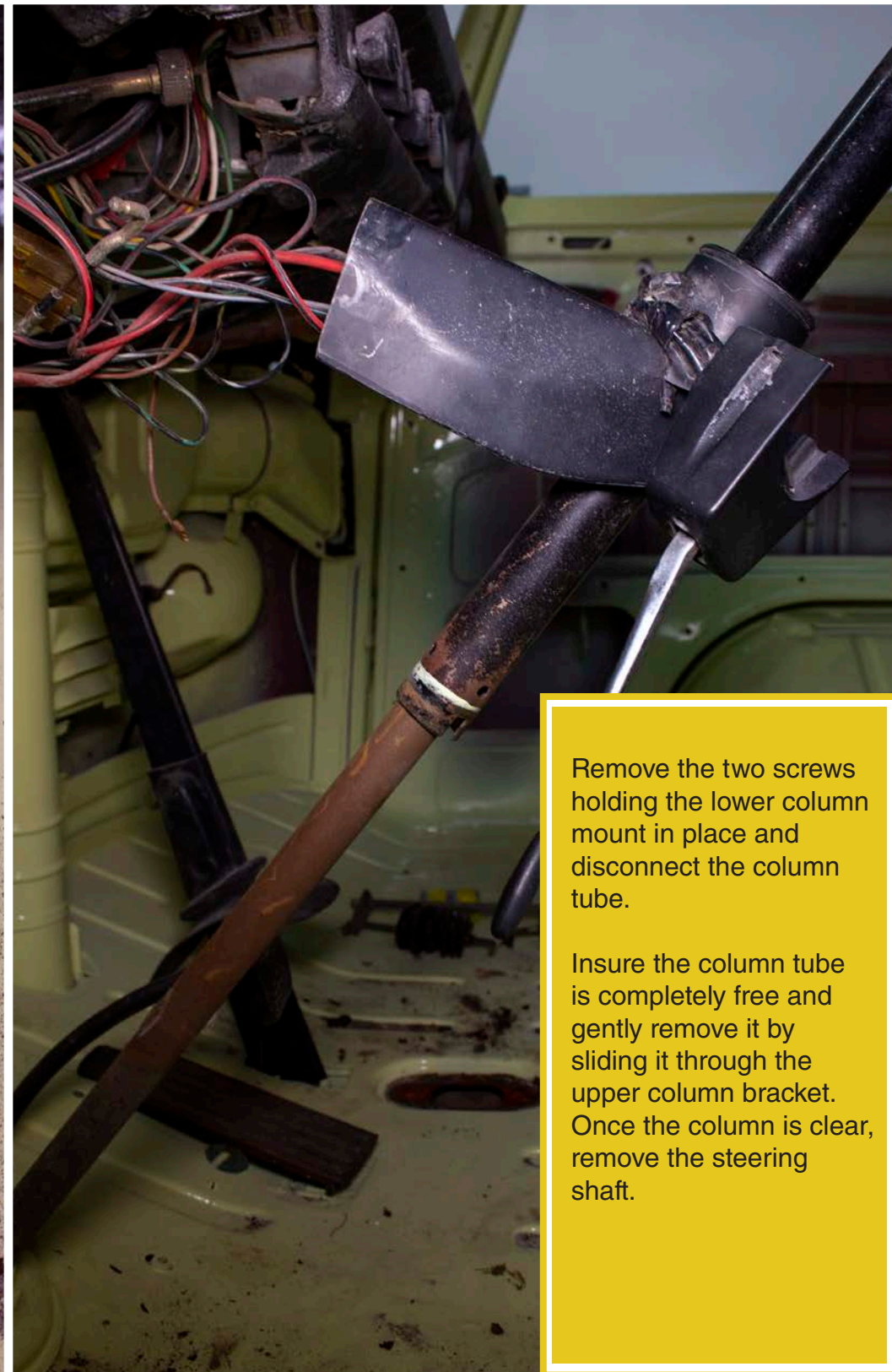


Unscrew the housing connecting the turn signal to the steering column assembly to gain access to the column c-clip and remove it.



Remove the screws from the underside of the steering column mount.

Once detached, you may need to loosen the set screw noted above.

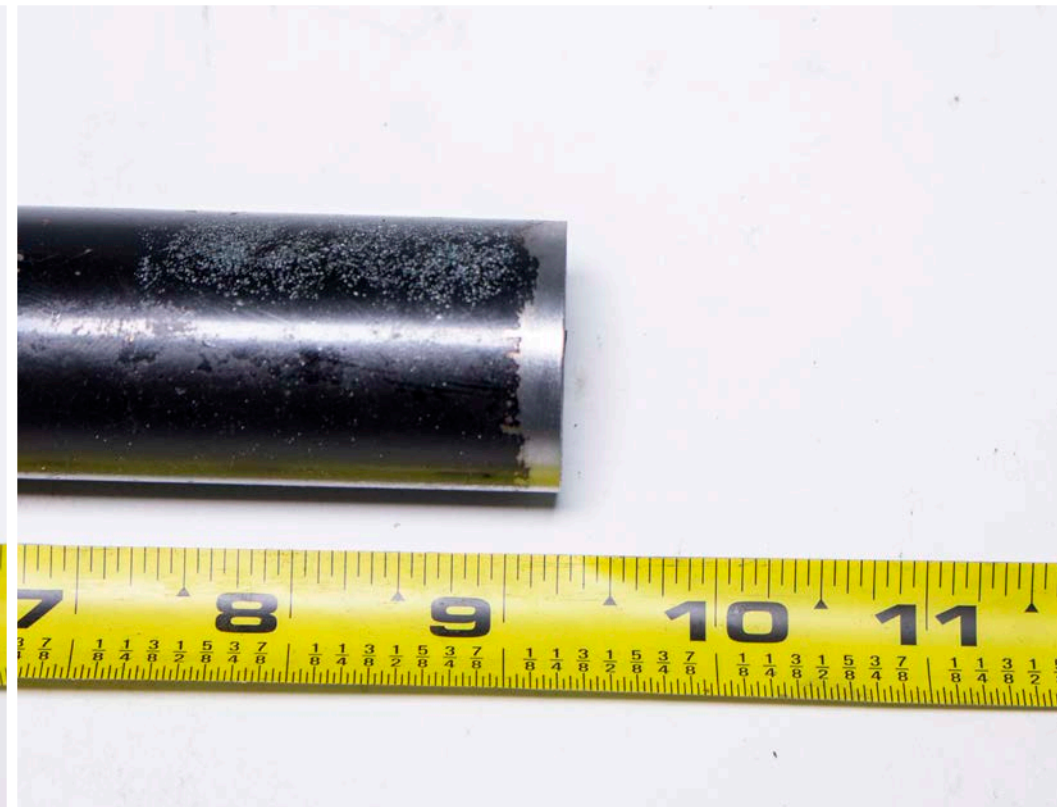
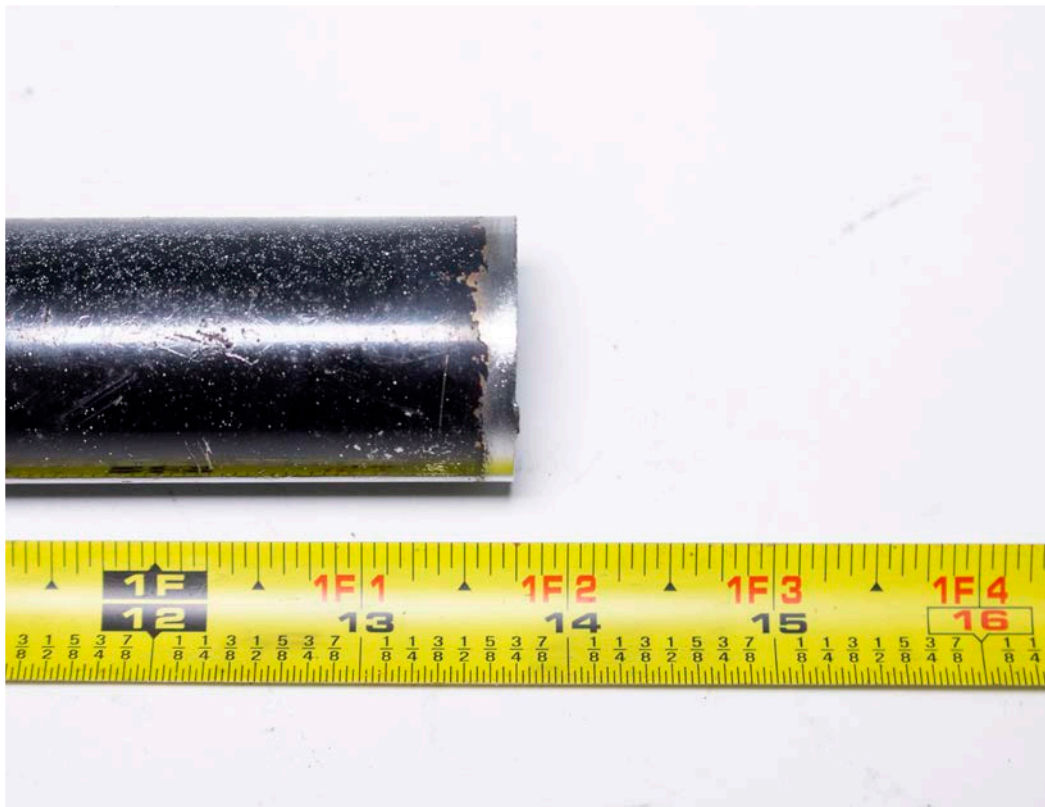


Remove the two screws holding the lower column mount in place and disconnect the column tube.

Insure the column tube is completely free and gently remove it by sliding it through the upper column bracket. Once the column is clear, remove the steering shaft.



Before cutting, remove the wire running through the shaft. The eyelet securing it in place is located underneath the connector.



Both the steering column and steering shaft will need to have a section removed to accommodate the EPAS Performance System. To do this, measure down from the steering wheel side of the column and make your first cut at 13 3/4". Measuring from the same side, a second cut will be made at 9 1/4".

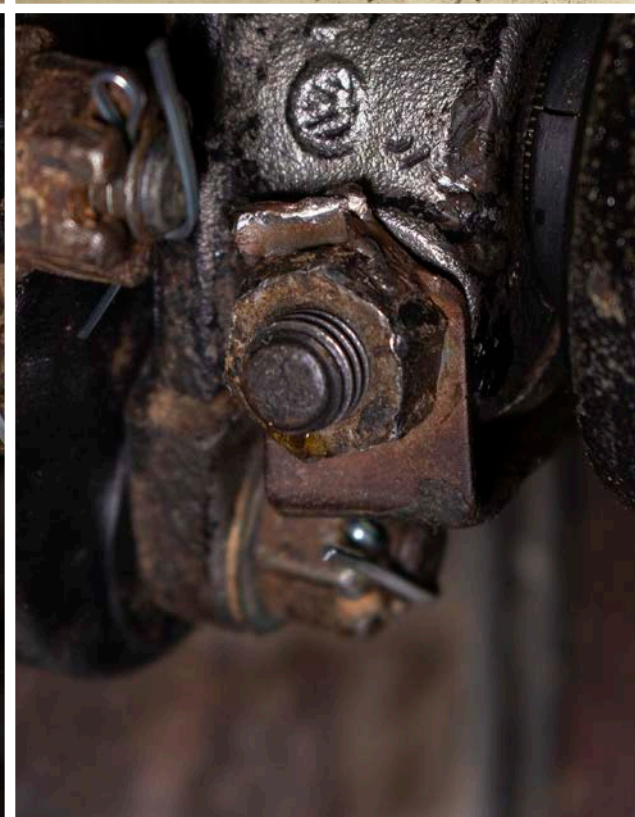
Repeat this process for the steering shaft, measure down from the steering wheel side of the column and make your first cut at 17 3/8". Measuring from the same side, a second cut will be made at 9".



Insure the provided splined coupler is fully seated onto the lower section of the steering shaft and weld in place.

The upper portion of the steering shaft will need to be directly welded into the coupler of the EPAS system. Again, insure the shaft is fully seated before welding.

When welding, be sure to keep the face of the weld low to avoid contact with the inside of the steering column. Grind flat if necessary as shown above.



When reconnecting the lower steering shaft to the steering box, be sure to align the groove on the box spline with the bolt hole on the connector.

Once properly connected and tightened refold the metal tab to its place against the nut.



Connect the steel rear coupler to the back of the EPAS system using the provided bolts. Test fit the steering column and EPAS motor in place and clock the motor to your desired position.

Mark the hole location on the column tube. Drill the access hole to match the hole in the provided coupler and then weld in place. Set screws can be used to temporarily hold in place (do not over tighten, this can dent the column tube).

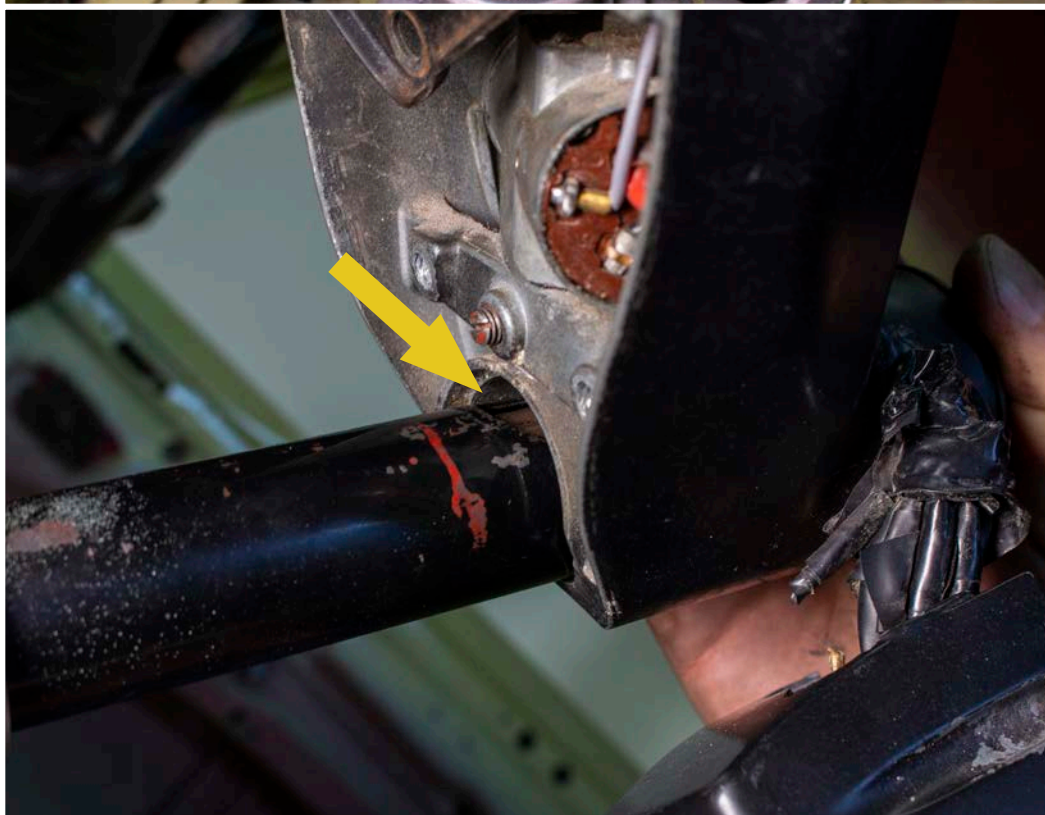


Remove and replace the plastic coupler on the firewall mount with the provided washer. Note the alignment and depth of the column tube and provided washer.

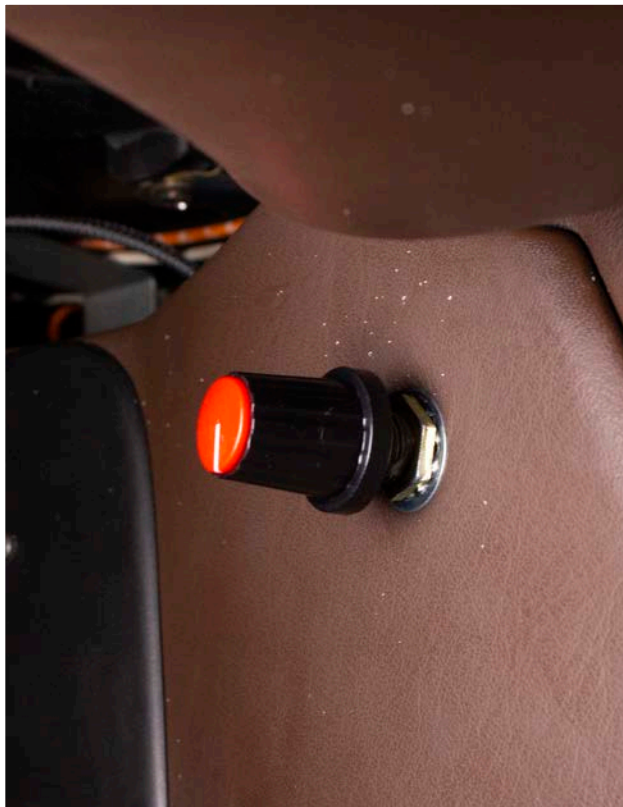
Remove the full lower assembly and center the washer on the lower column mount.

Using the depth and alignment marks made before, weld the lower column tube and washer in place.

Reinstall the EPAS motor with lower column assembly using the access hole to insert and tighten the provided set screws into the splined shaft coupler.



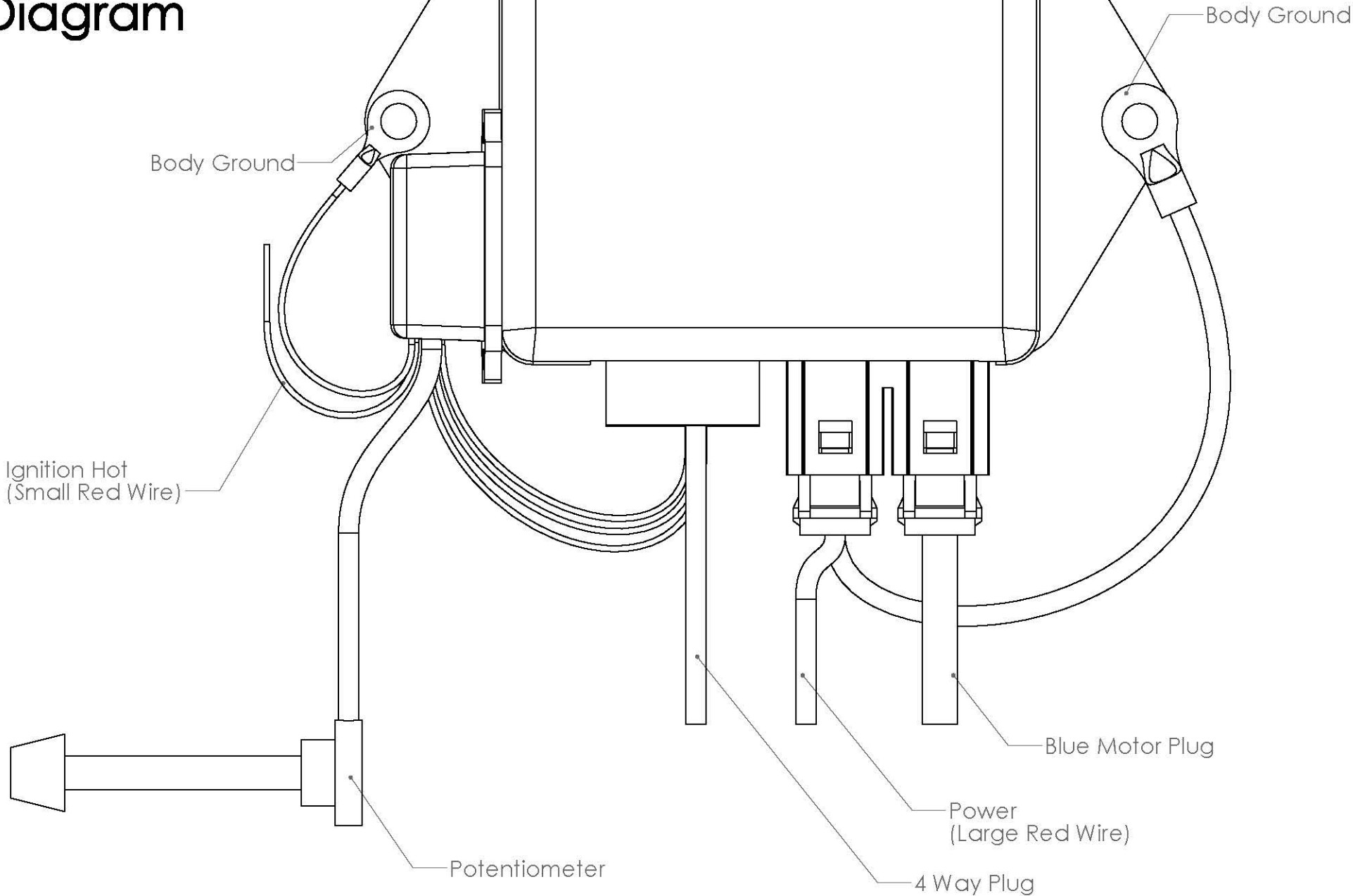
Once the lower portion and EPAS motor are installed, slide the upper column tube into the column bracket and motor housing. Make sure the groove in the upper column is aligned as shown. Once in place, tightened all set screws and re assemble the column mount bracket.



Install the pre-wired control module, hook up the power wire for the motor (blue connector) and the connector for the torque sensor (Delco weather-pack). Then hook up the small red wire to a hot in run and the #10 red wire directly to your battery or a direct power source.

Install potentiometer in an accessible location.

Module Wiring Diagram



TERMS AND CONDITIONS

LIABILITY LIMITATION AND RELEASE

We are pleased you have chosen to purchase one of our automotive specialty equipment items. Our products are carefully designed to combine performance, durability and safety, and to work in concert with the vehicle's original equipment. As they are specialty products, however, and as both performance and safety are paramount concerns, we urge our customers to consider having the products professionally installed.

We caution the purchaser that the enhancement provided by the specialty equipment item may change the handling characteristics of the vehicle. We urge the purchaser to carefully familiarize him/herself with the vehicle's performance characteristics with the new equipment. This should be done in a safe environment and in a safe manner.

We have no control over the quality or correctness of equipment installations performed by others, nor can we control the uses (in manner or environment) products are subjected to. Accordingly, liability on the part of EPAS Performance LLC is limited to the terms of its Express Limited Warranty.

A decision by the purchaser to retain and install the item purchased will be deemed acceptance of the specific terms of this Liability Limitation and Release.

The purchaser expressly releases and waives any claim against us for any consequential damages or injury that may arise from the use, or any malfunction, of its product. This Liability Limitation and Release binds the original purchaser, all successors in interest, and all persons to whom the product may subsequently be transferred; and the purchaser agrees to make this limitation known to all such persons. This Liability Limitation and Release is part of the consideration for the sale of the product.

This Liability Limitation and Release is governed by the laws of the State of Florida, United States of America. Any dispute regarding its terms or application is subject to arbitration in the State of Florida at the request of either party to the sale.

WARRANTY

This warranty is limited to the repair or replacement of the defective part only; the warranty specifically excludes labor or consequential damages or injury. The decision as to whether the defective part will be repaired or replaced will rest solely with the manufacturer. The warranty period begins on the date the product is shipped to you.

Full 5-year warranty nontransferable.

This warranty is void if the product is or was improperly installed, abused in any manner. Road or accident damage is not covered.

To make a claim under this warranty, call EPAS Performance to return the defective product, shipping or postage prepaid. Please include a copy of the original purchase invoice and a note describing the circumstances of the failure or malfunction.

This warranty is governed by the laws of the State of Florida, United States of America. Any dispute regarding the coverage of this warranty, its application or terms is subject to arbitration in the State of Florida.

If the purchaser disagrees with any of the terms of this warranty, please return the purchased item within three (3) business days of receipt. A decision by the purchaser to retain and install the item purchased will be deemed acceptance of the specific terms of this warranty.