



## Owners Manual

### VOLKSWAGEN BUS TYPE 1 (T1 1950-1967)



## WARNING

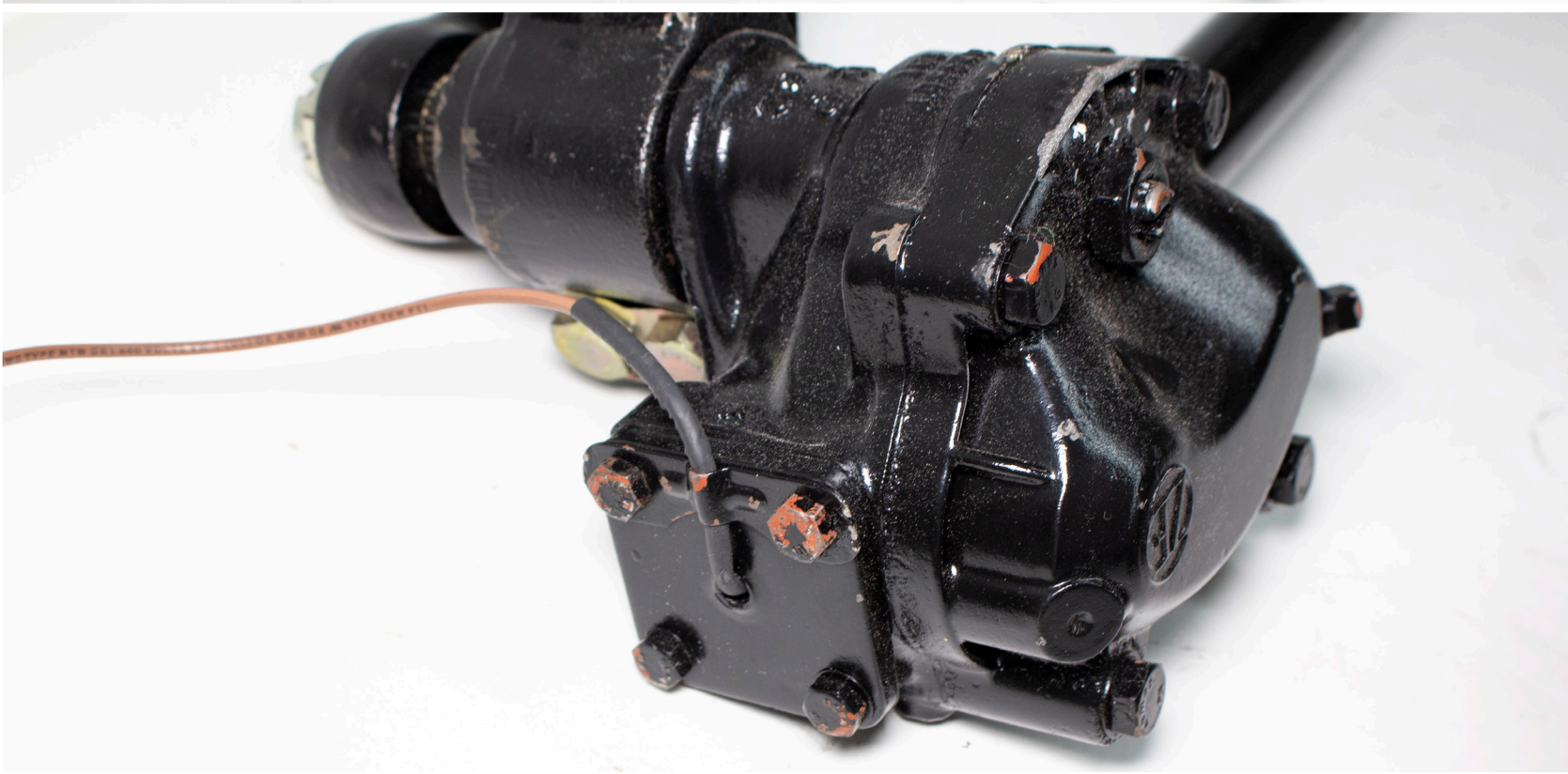


Please read and understand this manual before installing your EPAS kit.

The installation of this system should be done by a professional mechanic or a very knowledgeable amateur. You will be cutting and splicing your steering column, therefore EPAS Performance will not be held responsible for any malpractice. Caution should be taken when installing the electric motor: no impacts, shocks or hammering should be done to the unit. For aesthetic reason, you may choose to paint the assembly either in black or the color of your steering column to conserve the original look.

For a complete understanding, we strongly suggest to read this owner's manual prior to any installation. **Should you have any questions or concerns feel free to contact us at (941) 893-5427 or visit our website for installation videos.**

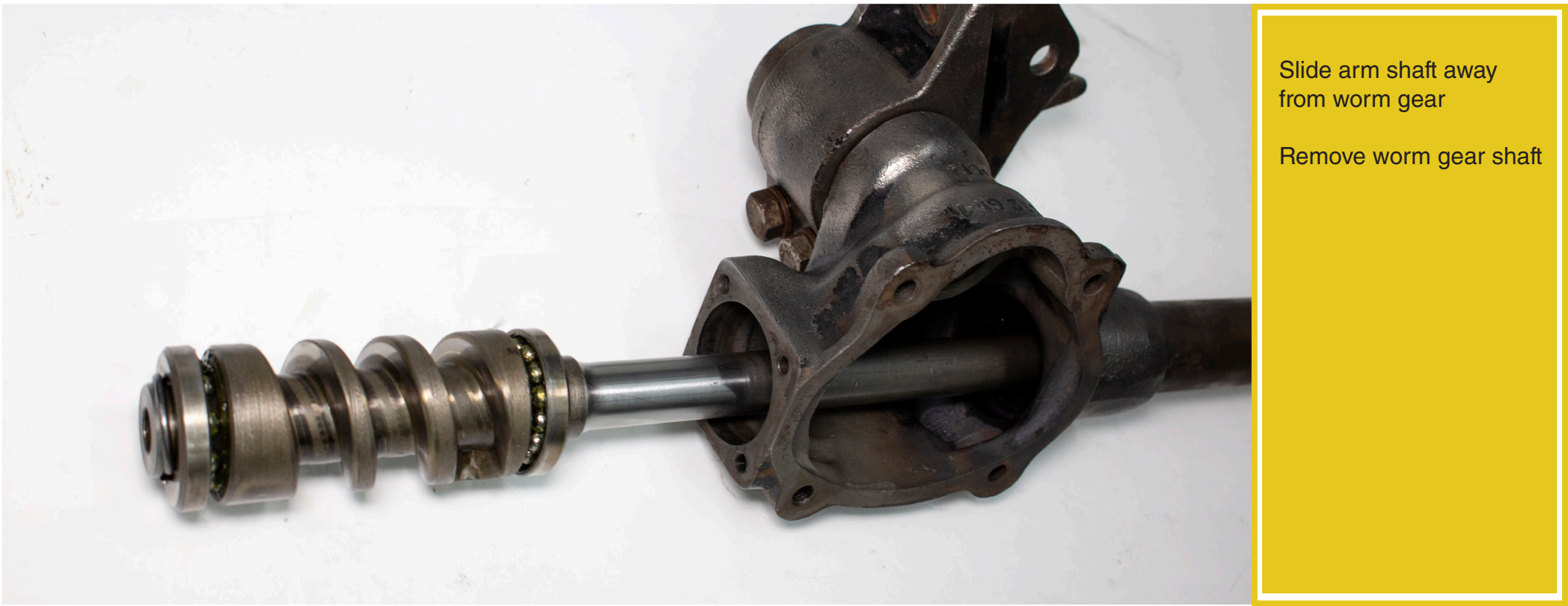
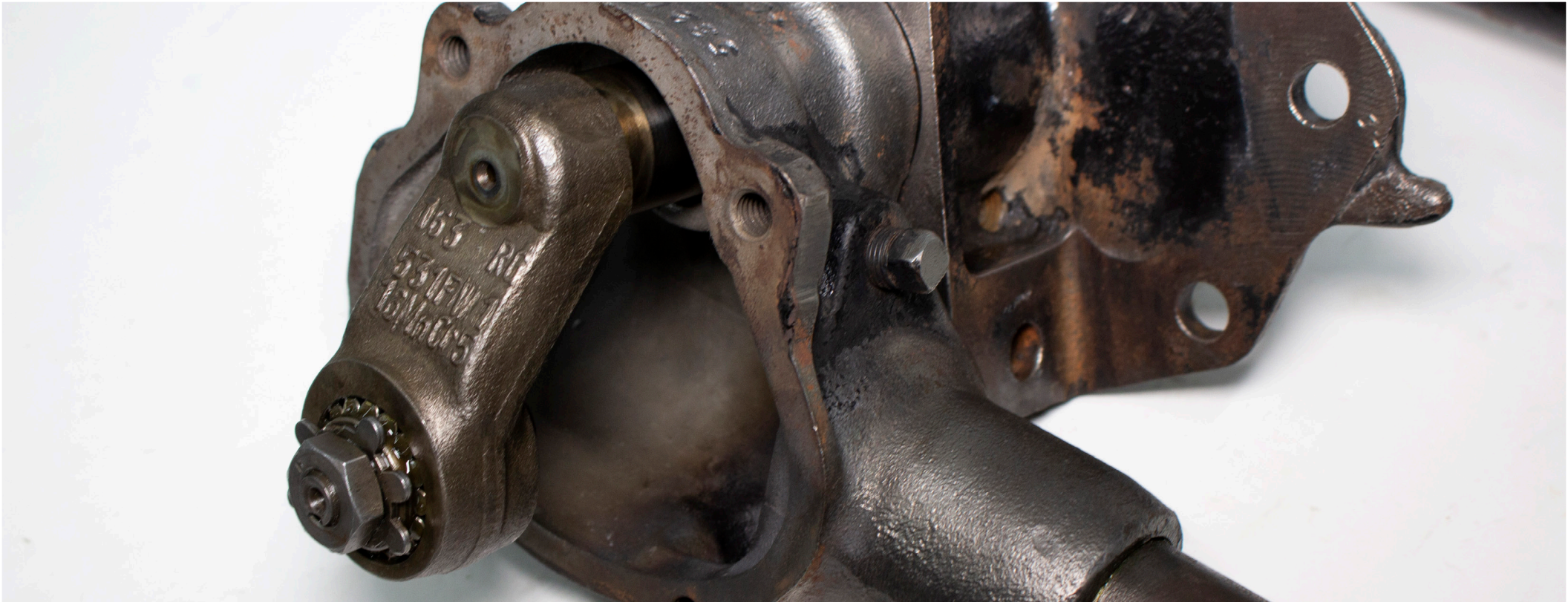
EPAS Performance wishes you thousands of enjoyable miles with your new Electric Power Steering!



Remove the full gearbox and steering column assembly from vehicle.

Remove the front case cover (remove 4 screws)

Remove rear cover (remove 4 screws)

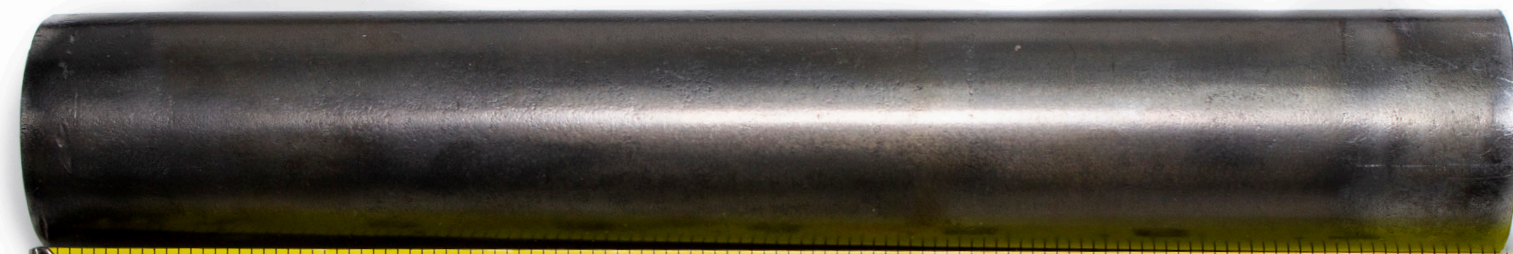


Slide arm shaft away  
from worm gear

Remove worm gear shaft

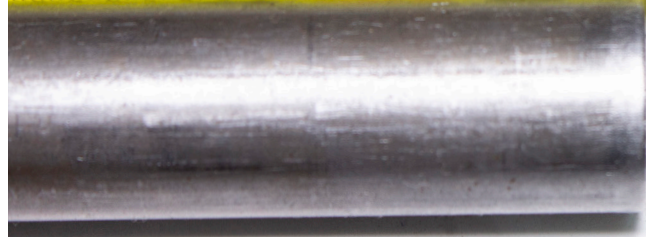
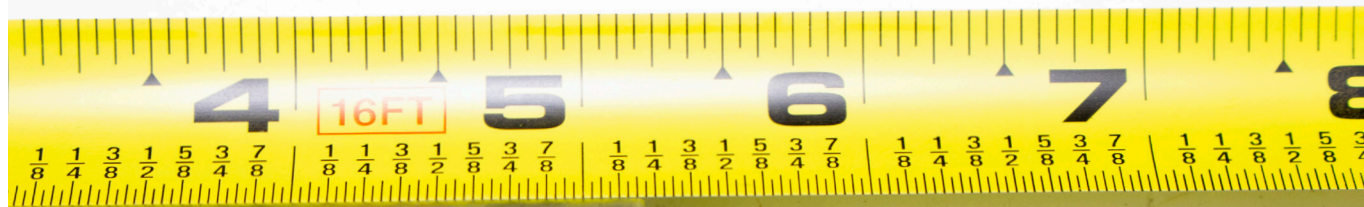
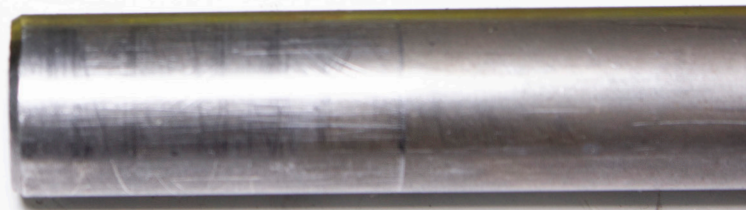
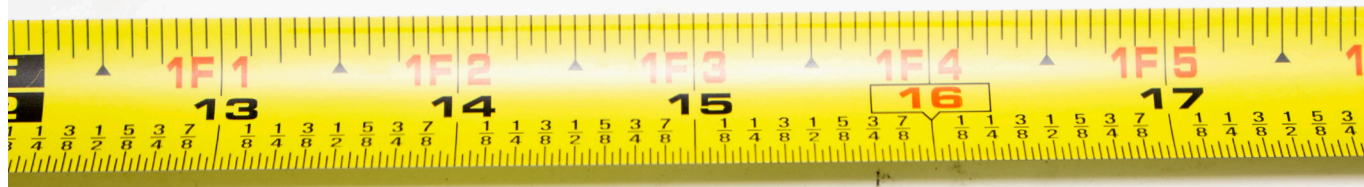


Cut column 19" from top of box



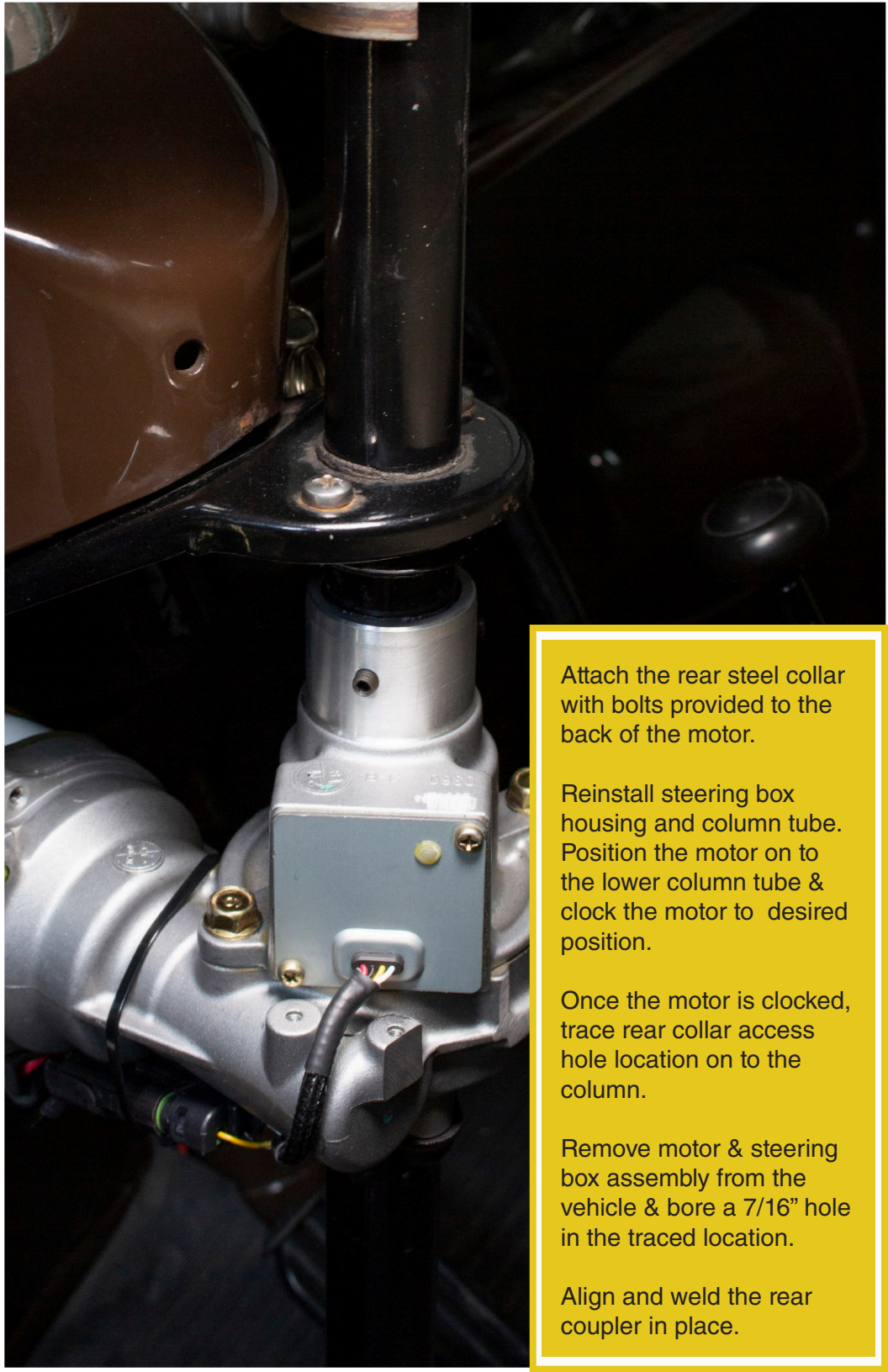
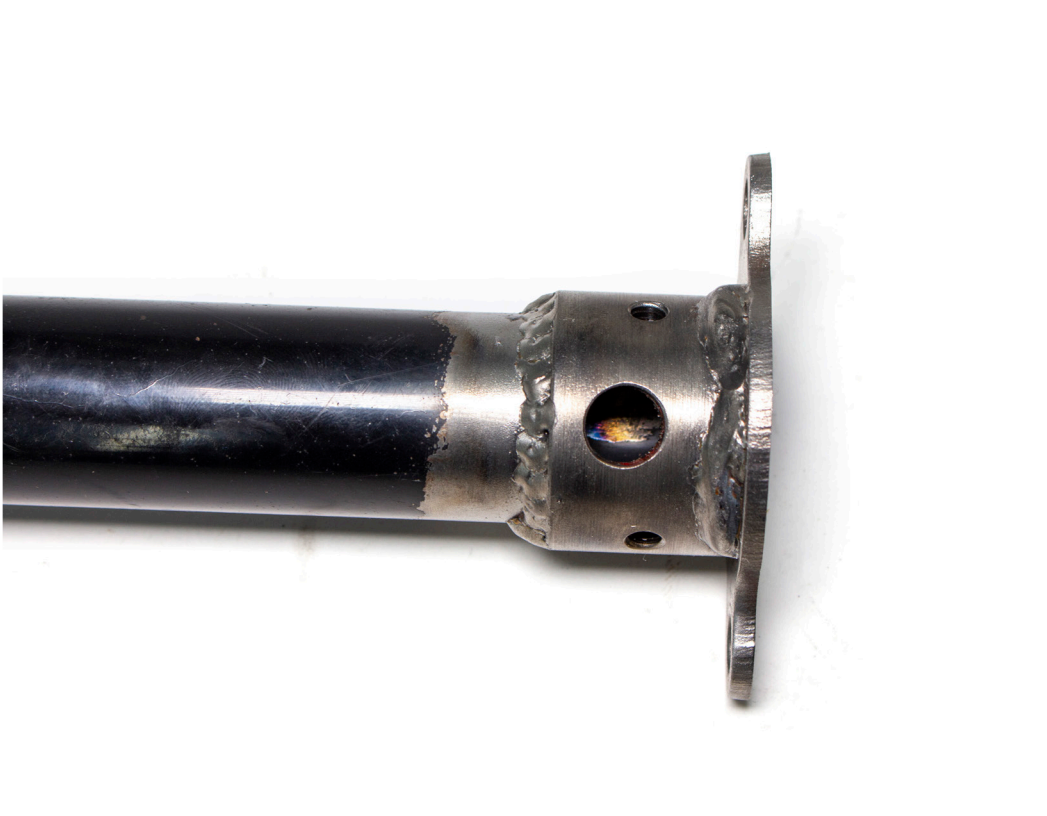
Cut column 7.5" from steering wheel side

NOTE BEARING.  
RETAIN WHEN  
CUTTING



The first cut to the steering shaft will be made at  $14 \frac{11}{16}$ " measuring from the splined end.

Make an additional cut measuring from the same splined end of the shaft at  $5 \frac{3}{16}$ ".



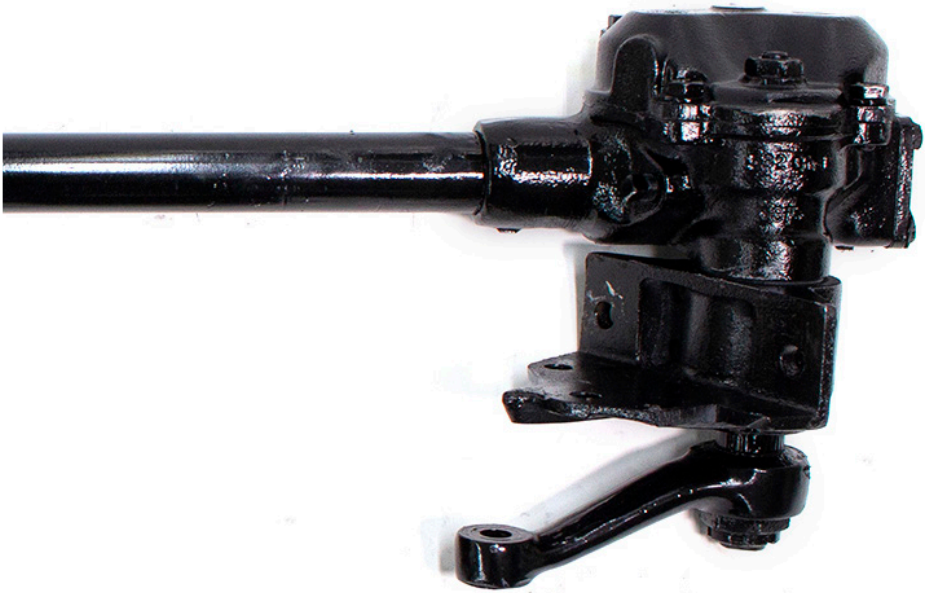
Attach the rear steel collar with bolts provided to the back of the motor.

Reinstall steering box housing and column tube. Position the motor on to the lower column tube & clock the motor to desired position.

Once the motor is clocked, trace rear collar access hole location on to the column.

Remove motor & steering box assembly from the vehicle & bore a 7/16" hole in the traced location.

Align and weld the rear coupler in place.

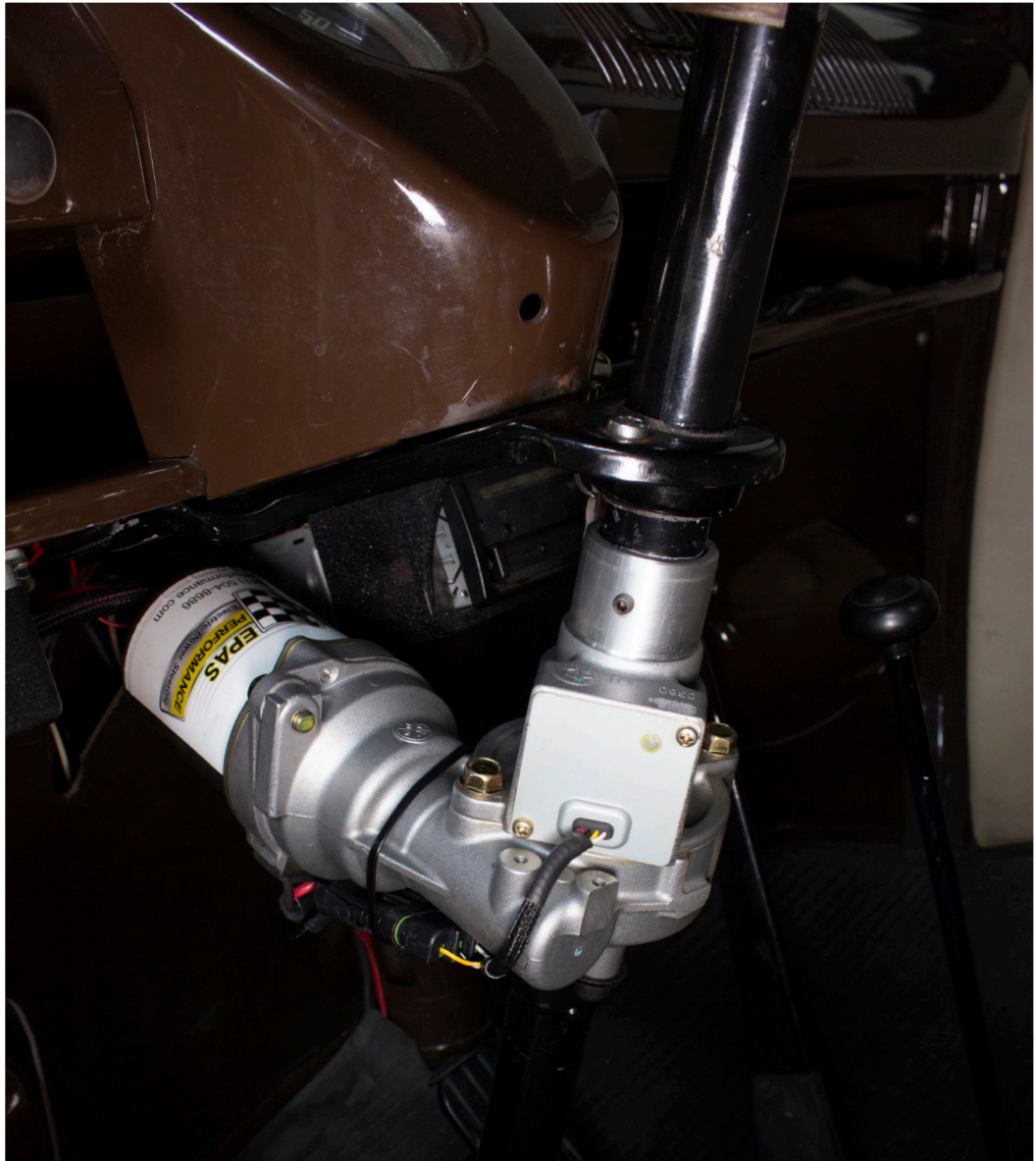


Install the splined steering shaft (insuring the shaft is fully seating inside the motor end) and weld in place, insuring that the weld is flush with the coupler.

Connect provided rear splined coupler to lower steering shaft (insuring the shaft is fully seating inside the coupler) and weld in place, insuring that the weld is flush with the coupler.

Re assemble steering box & steering shaft. \*Make sure pitman arm stays centered\* and reinstall in the vehicle.





Align the woodruff key hole at 12 o'clock position while installing the motor onto the lower steering shaft.  
\*Don't install set screws until final adjustments are made\*

Install upper column tube through column bracket into the motor housing.

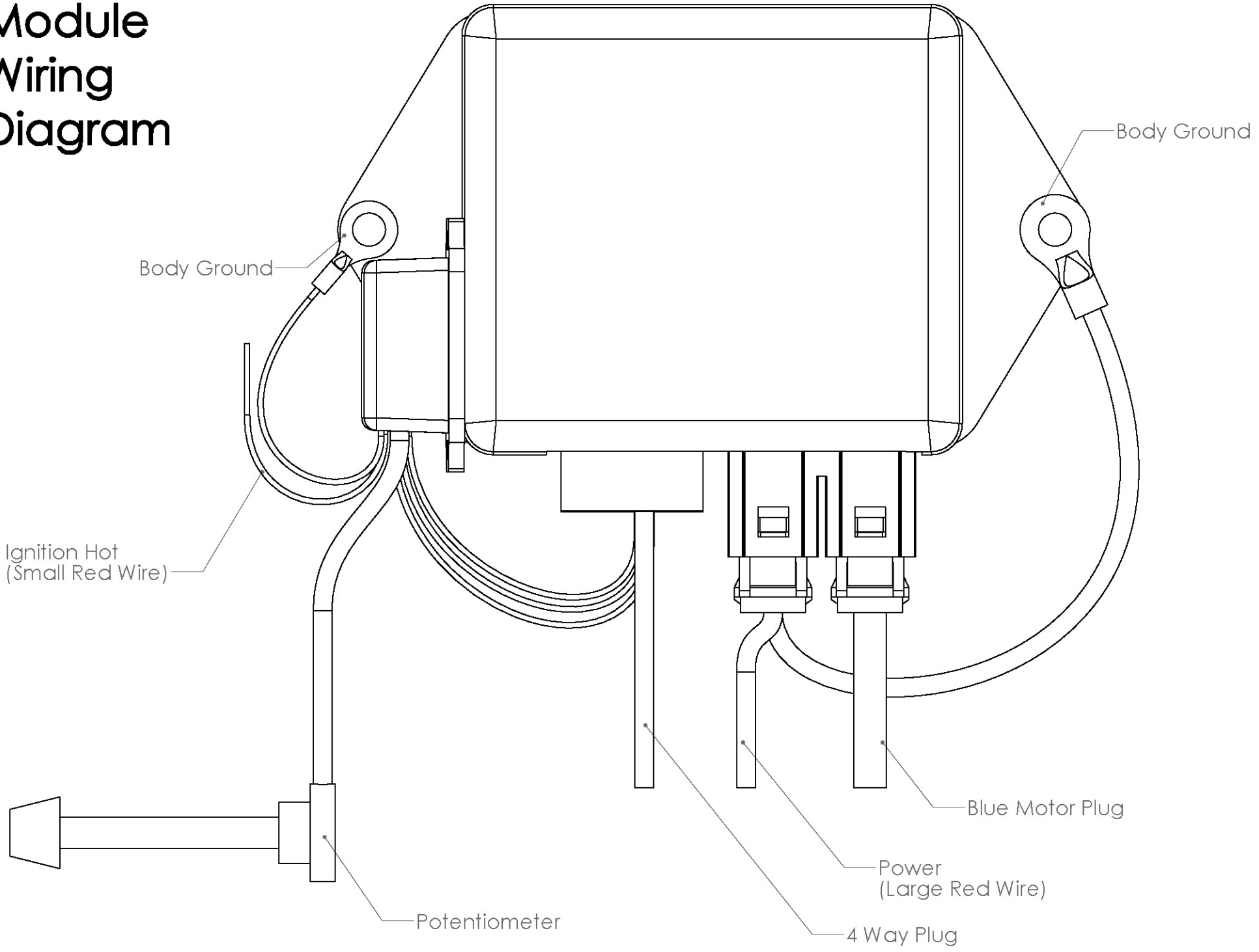
Once the motor is in place & oriented install and tighten all set screws using locktite.



Install the pre-wired control module, hook up the power wire for the motor (blue connector) and the connector for the torque sensor (Delco weather-pack). Then hook up the small red wire to a hot in run and the #10 red wire directly to your battery or a direct power source. You can use a 60A fuse if desired.

Install potentiometer in an accessible location.

# Module Wiring Diagram



# TERMS AND CONDITIONS

## LIABILITY LIMITATION AND RELEASE

We are pleased you have chosen to purchase one of our automotive specialty equipment items. Our products are carefully designed to combine performance, durability and safety, and to work in concert with the vehicle's original equipment. As they are specialty products, however, and as both performance and safety are paramount concerns, we urge our customers to consider having the products professionally installed.

We caution the purchaser that the enhancement provided by the specialty equipment item may change the handling characteristics of the vehicle. We urge the purchaser to carefully familiarize him/herself with the vehicle's performance characteristics with the new equipment. This should be done in a safe environment and in a safe manner.

We have no control over the quality or correctness of equipment installations performed by others, nor can we control the uses (in manner or environment) products are subjected to. Accordingly, liability on the part of EPAS Performance LLC is limited to the terms of its Express Limited Warranty.

A decision by the purchaser to retain and install the item purchased will be deemed acceptance of the specific terms of this Liability Limitation and Release.

The purchaser expressly releases and waives any claim against us for any consequential damages or injury that may arise from the use, or any malfunction, of its product. This Liability Limitation and Release binds the original purchaser, all successors in interest, and all persons to whom the product may subsequently be transferred; and the purchaser agrees to make this limitation known to all such persons. This Liability Limitation and Release is part of the consideration for the sale of the product.

This Liability Limitation and Release is governed by the laws of the State of Florida, United States of America. Any dispute regarding its terms or application is subject to arbitration in the State of Florida at the request of either party to the sale.

## WARRANTY

This warranty is limited to the repair or replacement of the defective part only; the warranty specifically excludes labor or consequential damages or injury. The decision as to whether the defective part will be repaired or replaced will rest solely with the manufacturer. The warranty period begins on the date the product is shipped to you.

Full 5-year warranty nontransferable.

This warranty is void if the product is or was improperly installed, abused in any manner. Road or accident damage is not covered.

To make a claim under this warranty, call EPAS Performance to return the defective product, shipping or postage prepaid. Please include a copy of the original purchase invoice and a note describing the circumstances of the failure or malfunction.

This warranty is governed by the laws of the State of Florida, United States of America. Any dispute regarding the coverage of this warranty, its application or terms is subject to arbitration in the State of Florida.

If the purchaser disagrees with any of the terms of this warranty, please return the purchased item within three (3) business days of receipt. A decision by the purchaser to retain and install the item purchased will be deemed acceptance of the specific terms of this warranty.