



# Owner's Manual

## MOPAR E Body



## WARNING

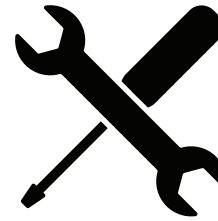


**Please read and understand this manual before installing your EPAS kit.**

The installation of this system should be done by a professional mechanic or a very knowledgeable amateur. You will be cutting and splicing your steering column, therefore EPAS Performance will not be held responsible for any malpractice. Caution should be taken when installing the electric motor: no impacts, shocks or hammering should be done to the unit. For aesthetic reason, you may choose to paint the assembly either in black or the color of your steering column to conserve the original look.

For a complete understanding, we strongly suggest to read this owner's manual prior to any installation. **Should you have any questions or concerns feel free to contact us at (941) 893-5427 or visit our website for installation videos.**

EPAS Performance wishes you thousands of enjoyable miles with your new Electric Power Steering!



### Required tools:

- Drill
- Right angle grinder, with cutting disc
- Goggles
- Measuring tape
- Steering wheel removing tool
- You will also need hand tools to remove the steering column

## Column Modifications

Measuring 15.50-15.75" from the top of the steering column where the steering wheel mounts. (not including the accordion steering wheel hub.)

## Shaft Modifications

Remove the steering shaft from the column tube. Measuring from the splined side on the steering shaft cut at 11 5/8"

Install Steering shaft into EPAS motor ensuring it is fully seated. Install steering column on to the EPAS motor ensuring it is fully seated onto the aluminum column. Keep all set screws loose until the motor has been clocked to desired position.

If you are misaligned, you can move the steering shaft either in or out from the EPAS motor.

To begin reinstalling the column you will first need to clock and mark the column for staking. Place the column and motor assembly in the vehicle and set the motor at the desired position mark the staking location.

Drill a hole through the tube and through the aluminum collar tapping the motor housing.

Stake the column in place using 1/4-20 bolt. Insure the length is no more than 10mm, if too long it can hang up.

### **BE SURE NOT TO DRILL THROUGH THE MOTOR HOUSING WHEN STAKING THE COLUMN.**

For more information on this process please visit the tech corner section on our manuals page.

Tighten all set screws on steering shaft and column.

When installing the firewall plate be sure the two bolts holding the bearing in place are loose to allow the bearing to pivot to the required angle (mounting plates may have to be pried apart to allow bearing movement). Make sure to tighten all bolts once all parts are aligned.

Re-install the steering column with the EPAS motor into the vehicle.

With the universal joint provided, install on the splined end of the vehicles gear box. Install the 1" DD in the ujoint, insert only 1". Tighten set screws on gear box and the ones holding the 1" DD. Run the 1" DD to the vehicles firewall.

Tighten all bolts in place to secure the system into place. Be sure to double check tightness after test driving as well.

Image A

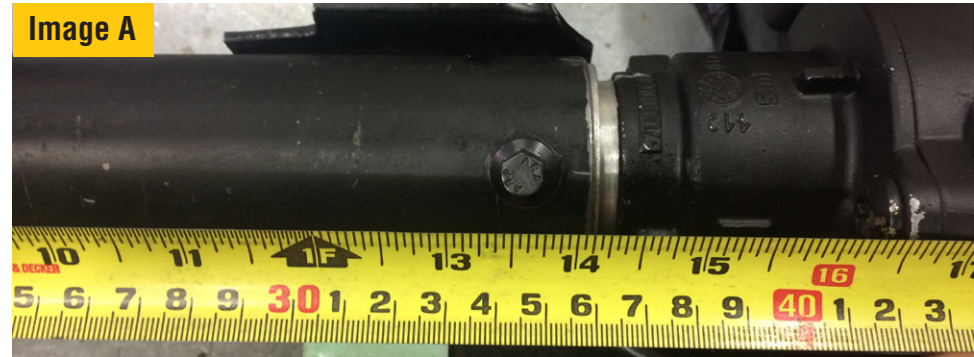


Image B

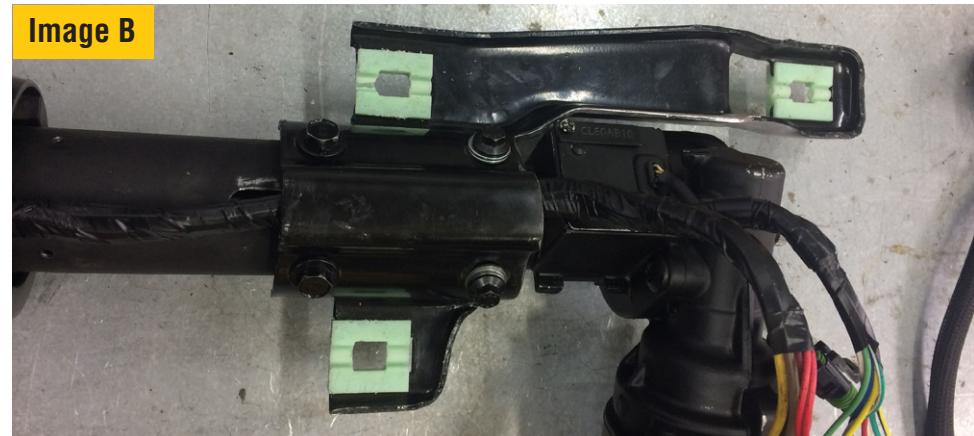


Image C



Image D

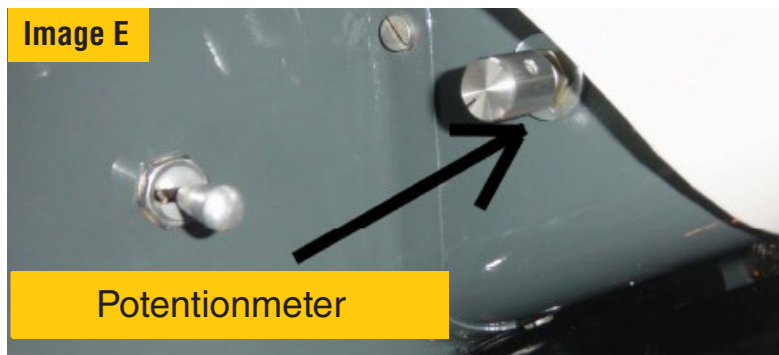


Install the pre-wired control module on the firewall just next to the fuse block (or elsewhere), hook up the power wire for the motor (blue connector) and the connector for the torque sensor (Delco weathepack). Then hook up the small red wire to a hot in run and the #10 red wire directly to your battery or a direct power source.

Install potentiometer in an accessible location. **(Image E&F)**

Once everything is hooked up, turn the power on, wait for the little click (relays in module) and enjoy your new Electric Power Steering.

Image E

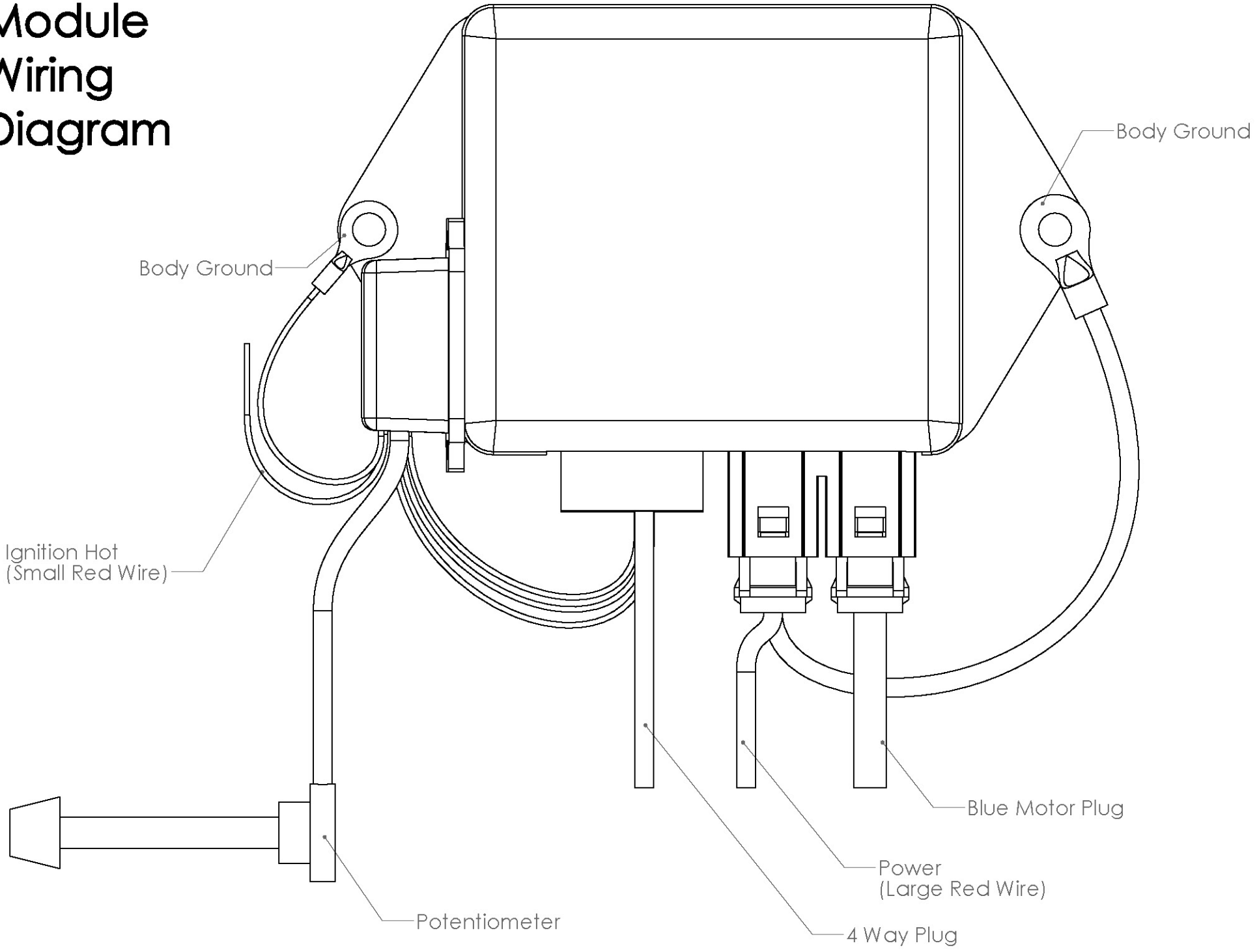


Potentionmeter

Image F



# Module Wiring Diagram





# TERMS AND CONDITIONS

## LIABILITY LIMITATION AND RELEASE

We are pleased you have chosen to purchase one of our automotive specialty equipment items. Our products are carefully designed to combine performance, durability and safety, and to work in concert with the vehicle's original equipment. As they are specialty products, however, and as both performance and safety are paramount concerns, we urge our customers to consider having the products professionally installed.

We caution the purchaser that the enhancement provided by the specialty equipment item may change the handling characteristics of the vehicle. We urge the purchaser to carefully familiarize him/herself with the vehicle's performance characteristics with the new equipment. This should be done in a safe environment and in a safe manner.

We have no control over the quality or correctness of equipment installations performed by others, nor can we control the uses (in manner or environment) products are subjected to. Accordingly, liability on the part of EPAS Performance LLC is limited to the terms of its Express Limited Warranty.

A decision by the purchaser to retain and install the item purchased will be deemed acceptance of the specific terms of this Liability Limitation and Release.

The purchaser expressly releases and waives any claim against us for any consequential damages or injury that may arise from the use, or any malfunction, of its product. This Liability Limitation and Release binds the original purchaser, all successors in interest, and all persons to whom the product may subsequently be transferred; and the purchaser agrees to make this limitation known to all such persons. This Liability Limitation and Release is part of the consideration for the sale of the product.

This Liability Limitation and Release is governed by the laws of the State of Florida, United States of America. Any dispute regarding its terms or application is subject to arbitration in the State of Florida at the request of either party to the sale.

## WARRANTY

This warranty is limited to the repair or replacement of the defective part only; the warranty specifically excludes labor or consequential damages or injury. The decision as to whether the defective part will be repaired or replaced will rest solely with the manufacturer. The warranty period begins on the date the product is shipped to you.

Full 5-year warranty nontransferable.

This warranty is void if the product is or was improperly installed, abused in any manner. Road or accident damage is not covered.

To make a claim under this warranty, call EPAS Performance to return the defective product, shipping or postage prepaid. Please include a copy of the original purchase invoice and a note describing the circumstances of the failure or malfunction.

This warranty is governed by the laws of the State of Florida, United States of America. Any dispute regarding the coverage of this warranty, its application or terms is subject to arbitration in the State of Florida.

If the purchaser disagrees with any of the terms of this warranty, please return the purchased item within three (3) business days of receipt. A decision by the purchaser to retain and install the item purchased will be deemed acceptance of the specific terms of this warranty.



**EPAS PERFORMANCE**  
**2111 Whitfield Park Ave**  
**Sarasota, FL 34243**

1-941-893-5427  
1-800-372-7611

**[www.EPASPerformance.com](http://www.EPASPerformance.com)**  
Visit our website for installation videos.

