



Owner's Manual

69' Chevrolet Camaro | 69'-74' Chevrolet Nova | 73'-74' Oldsmobile Omega, Apollo



WARNING

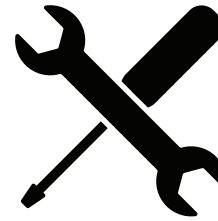


Please read and understand this manual before installing your EPAS kit.

The installation of this system should be done by a professional mechanic or a very knowledgeable amateur. You will be cutting and splicing your steering column, therefore EPAS Performance will not be held responsible for any malpractice. Caution should be taken when installing the electric motor: no impacts, shocks or hammering should be done to the unit. For aesthetic reason, you may choose to paint the assembly either in black or the color of your steering column to conserve the original look.

For a complete understanding, we strongly suggest to read this owner's manual prior to any installation. **Should you have any questions or concerns feel free to contact us at (941) 893-5427 or visit our website for installation videos.**

EPAS Performance wishes you thousands of enjoyable miles with your new Electric Power Steering!



Required tools:

- Drill
- Right angle grinder, with cutting disc
- Goggles
- Measuring tape
- Steering wheel removing tool
- You will also need hand tools to remove the steering column

Remove steering column to bench.

Remove the firewall plate, rubber boot, dash mounting bracket and the ignition switch. (The firewall plate and boot will not be used.)

Column Modifications

Measuring from the lip below the steering wheel adapter, measure 17 ¾" to the seam. Make the cut ONLY metal thickness. This will release the pressure of the roller adapter inside.

(Image A & B)

Using a hammer or dead blow, hammer out the lower portion and the innards of the column. Using a slide hammer, pull out the inner roller bearing. **(Image B)**

A ½" hole will need to be drilled on the backside of the column. Measuring from the cut end at 4 ½" at 6:00. This hole will be for access to the set screw on the motor to tighten and hold the shaft.

(Image C)

Disassemble the upper portion of the column- pulling out the shaft.

Shaft & Modifications

Measuring from the NON-splined side, cut at 7 7/8". This small portion will not be used.

Image A



Image B



Image C



Reassemble the column upper portion.

On the bench, install the EPAS PERFORMANCE motor to the end of the column. Install the coupler on the splined side of the motor. Install the $\frac{3}{4}$ " DD shaft into the coupler. Tighten only the set screws on the column side.

When installing the firewall plate be sure the three bolts holding the bearing in place are loose to allow the bearing to pivot to the required angle (mounting plates may have to be pried apart to allow bearing movement). Make sure to tighten all bolts once all parts are aligned.

Connect the provided ujoint to the steering box. Install the 1" DD in the ujoint, insert only 1". Tighten set screws on gear box and the ones holding the 1" DD. Run the 1" DD to the vehicles firewall. Insert $\frac{3}{4}$ " DD shaft into the 1" DD shaft.

Using the existing hole in the ignition switch (bolt hole closest to the motor) Drill a $\frac{1}{4}$ " 20 hole through the existing hole into the coupler. This will be where you will stake the column to the motor.

(Image E)

Install the module on the bracket at the top of the firewall plate. Be sure to tighten down both bolts. **(Image F)**

A $\frac{1}{2}$ " hole will need to be drilled about 1" from the existing OE wiring firewall hole. Install the grommet provided in the hole.

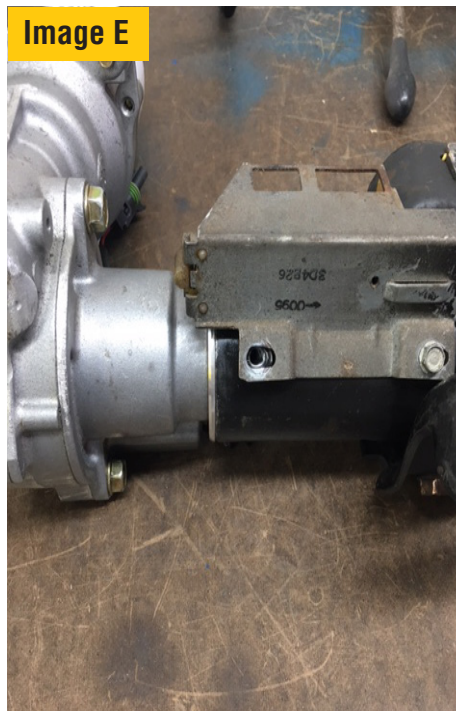


Image G



Potentiometer

Install the pre-wired control module on the firewall just next to the fuse block (or elsewhere), hook up the power wire for the motor (blue connector) and the connector for the torque sensor (Delco weathepack). Then hook up the small red wire to a hot in run and the #10 red wire directly to your battery or a direct power source.

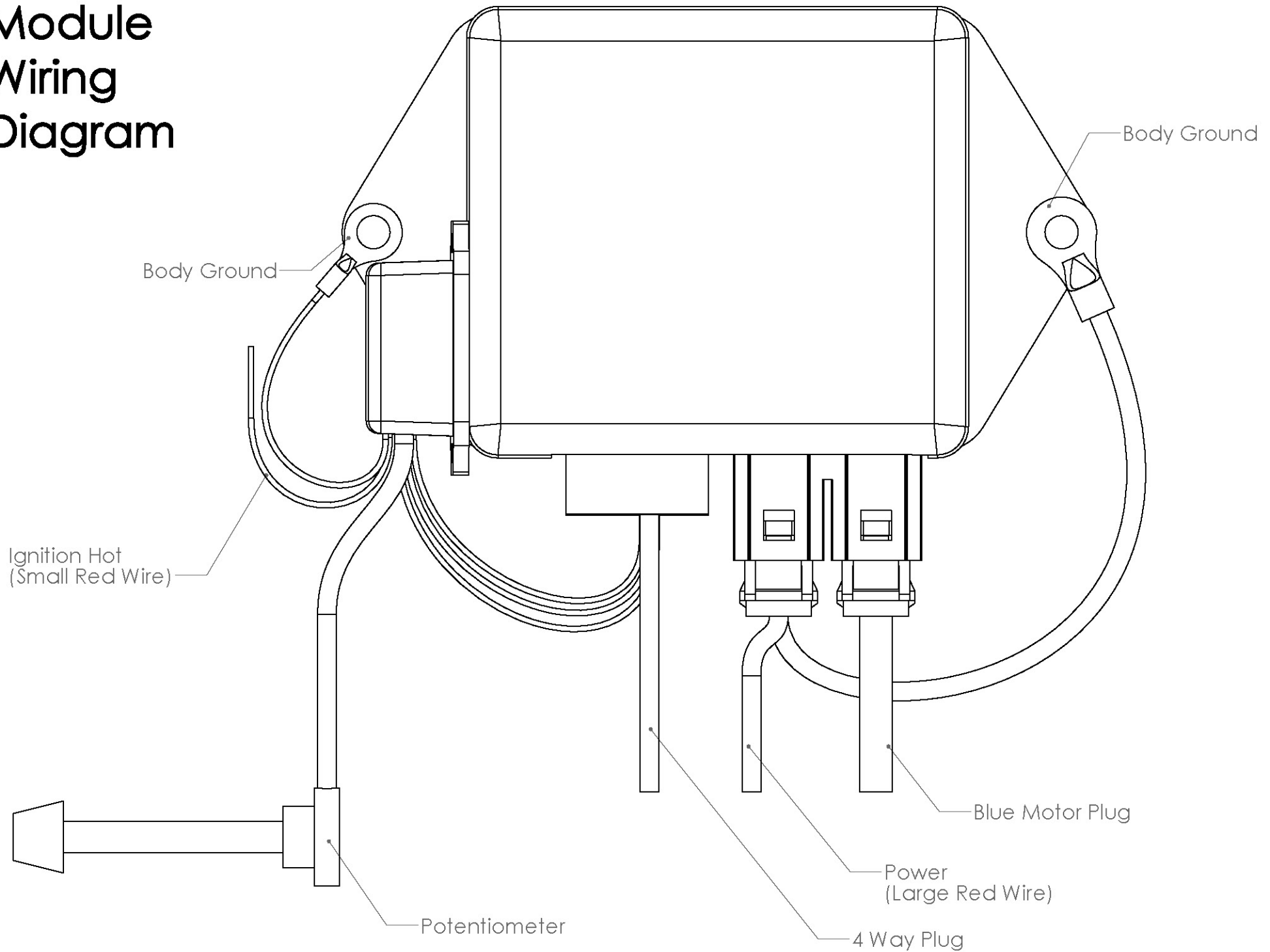
Install potentiometer in an accessible location. **(Image G&H)**

Once everything is hooked up, turn the power on, wait for the little click (relays in module) and enjoy your new Electric Power Steering.

Image H



Module Wiring Diagram



TERMS AND CONDITIONS

LIABILITY LIMITATION AND RELEASE

We are pleased you have chosen to purchase one of our automotive specialty equipment items. Our products are carefully designed to combine performance, durability and safety, and to work in concert with the vehicle's original equipment. As they are specialty products, however, and as both performance and safety are paramount concerns, we urge our customers to consider having the products professionally installed.

We caution the purchaser that the enhancement provided by the specialty equipment item may change the handling characteristics of the vehicle. We urge the purchaser to carefully familiarize him/herself with the vehicle's performance characteristics with the new equipment. This should be done in a safe environment and in a safe manner.

We have no control over the quality or correctness of equipment installations performed by others, nor can we control the uses (in manner or environment) products are subjected to. Accordingly, liability on the part of EPAS Performance LLC is limited to the terms of its Express Limited Warranty.

A decision by the purchaser to retain and install the item purchased will be deemed acceptance of the specific terms of this Liability Limitation and Release.

The purchaser expressly releases and waives any claim against us for any consequential damages or injury that may arise from the use, or any malfunction, of its product. This Liability Limitation and Release binds the original purchaser, all successors in interest, and all persons to whom the product may subsequently be transferred; and the purchaser agrees to make this limitation known to all such persons. This Liability Limitation and Release is part of the consideration for the sale of the product.

This Liability Limitation and Release is governed by the laws of the State of Florida, United States of America. Any dispute regarding its terms or application is subject to arbitration in the State of Florida at the request of either party to the sale.

WARRANTY

This warranty is limited to the repair or replacement of the defective part only; the warranty specifically excludes labor or consequential damages or injury. The decision as to whether the defective part will be repaired or replaced will rest solely with the manufacturer. The warranty period begins on the date the product is shipped to you.

Full 5-year warranty nontransferable.

This warranty is void if the product is or was improperly installed, abused in any manner. Road or accident damage is not covered.

To make a claim under this warranty, call EPAS Performance to return the defective product, shipping or postage prepaid. Please include a copy of the original purchase invoice and a note describing the circumstances of the failure or malfunction.

This warranty is governed by the laws of the State of Florida, United States of America. Any dispute regarding the coverage of this warranty, its application or terms is subject to arbitration in the State of Florida.

If the purchaser disagrees with any of the terms of this warranty, please return the purchased item within three (3) business days of receipt. A decision by the purchaser to retain and install the item purchased will be deemed acceptance of the specific terms of this warranty.



EPAS PERFORMANCE
2111 Whitfield Park Ave
Sarasota, FL 34243

1-941-893-5427
1-800-372-7611

www.EPASPerformance.com
Visit our website for installation videos.

