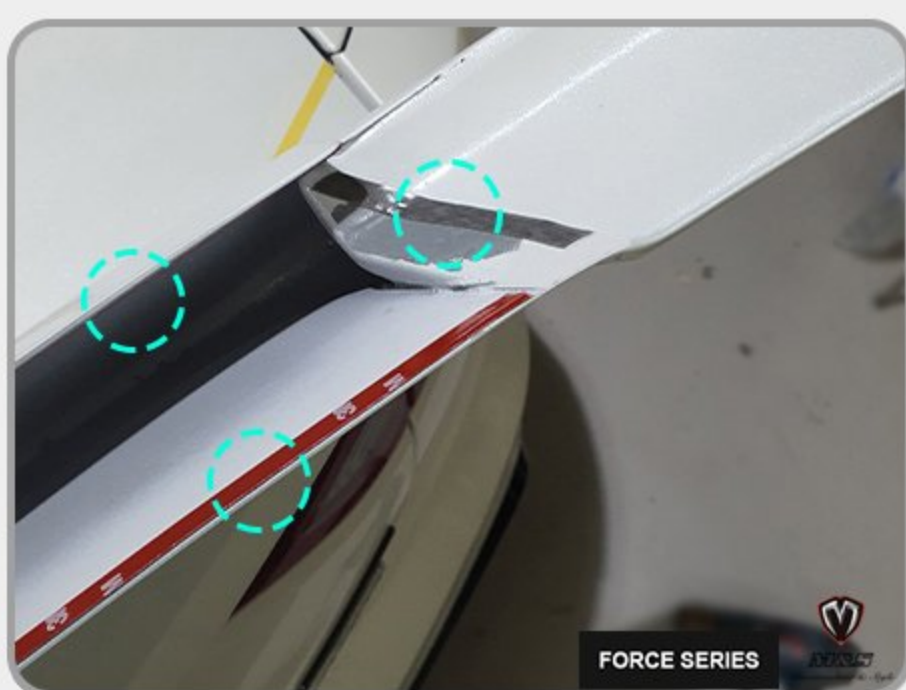


Installation Explanation



1. Test fit the spoiler and mark the installation location with masking tape as shown in the above photo.



2. Apply the 3M double sided tape on the inside of the spoiler as shown in the above photo.



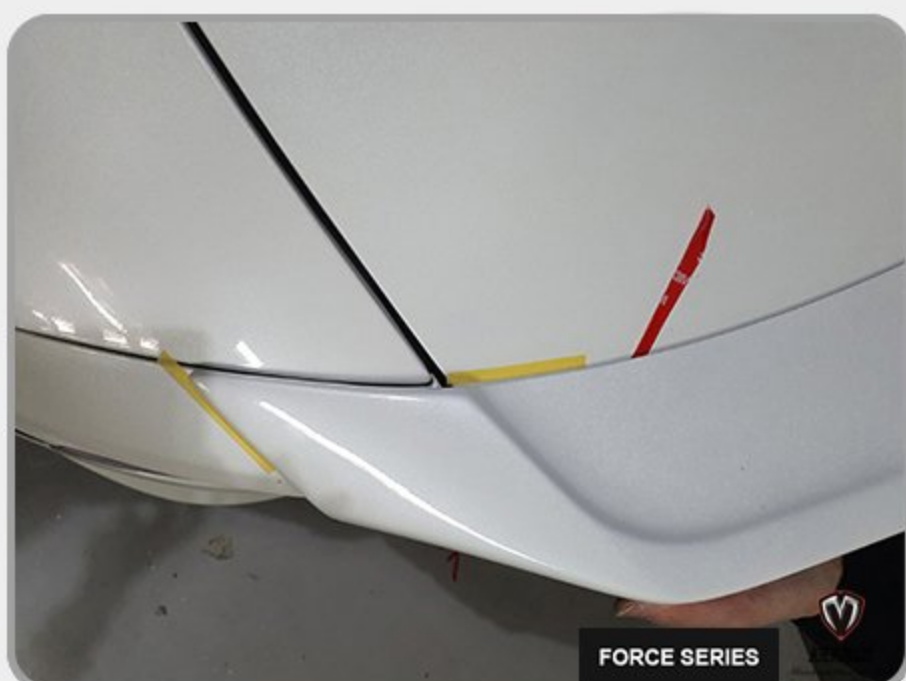
3. Apply the 3M double sided tape up to where indicated in the above photo.



4. Remove the protective film of the tip of the 3M double sided tape shown in step 3, then add additional 3M double sided tape all the way to the end of the spoiler as shown in the above photo.



5. Peel off a bit of the protective film of the 3M double sided tape as shown in the above photo, so that it can be pulled off fully once the spoiler is in the correct position for installation.



6. Place the spoiler on the trunk and position it to the installation location marked in step 1.



7. Remove the protective film of the 3M double sided tape fully, and firmly press the spoiler to complete the installation.



8. If the spoiler is being installed at a low temperature area, applying low heat using a heatgun will enhance the adhesiveness of the 3M double sided tape.