



CARBON FIBER PADDLE SHIFTER REPLACEMENT INSTALLATION GUIDE



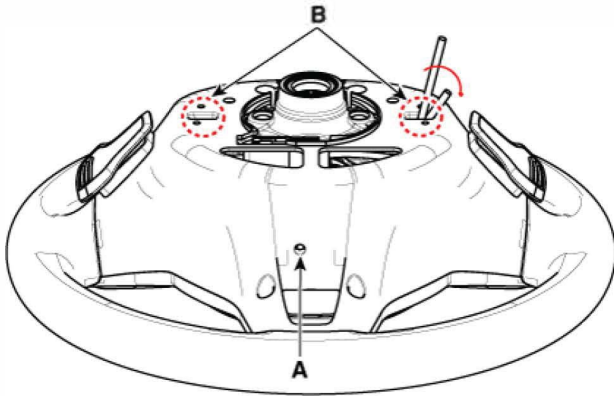
Removal

1. Turn the steering wheel so that the front wheels are facing straight ahead.

2.

Remove the driver airbag module.

Insert a tool into the lower hole (A) and then rotate both sides of the tool (B) in the direction of the arrow to release it.

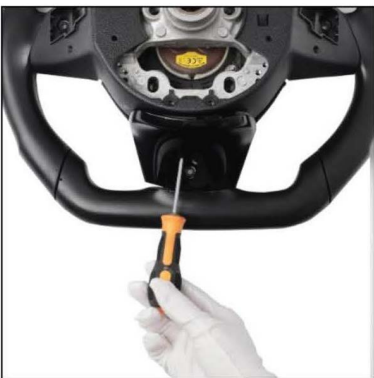


OR

Insert a tool into both left and right area at the same time and push to unlock the inner locking pin.



Insert a tool into bottom hole and push to unlock the inner locking pin. The airbag module should come off.



3. Disconnect the airbag connector and horn connector.

Loosen the steering wheel bolt and then remove the steering wheel with the steering wheel puller.

Tightening torque:

44.1 – 49.0 N.m (32.5 – 36.2 lb.ft)

4. Install in the reverse order of removal

Disassembly

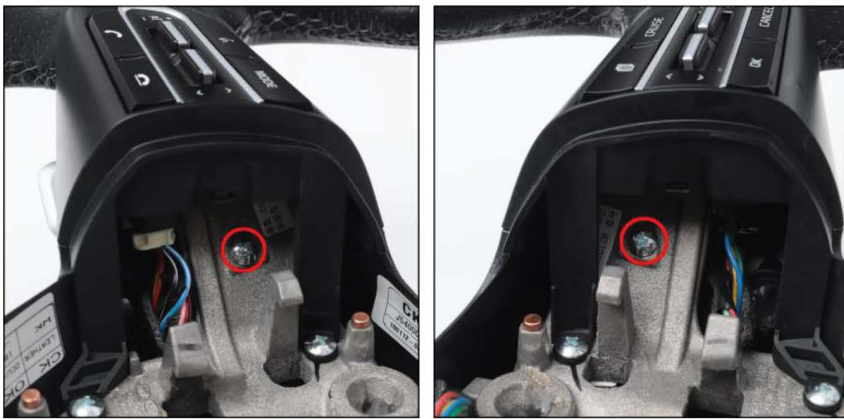
1. Loosen the screw and then remove the upper cover.



2. Loosen the damper crew and then remove the damper.



3. Loosen the paddle shift screw.



4. Using the driver, disconnect the paddle shift connector.



If install our carbon fiber paddle shift replacement unit (Refer to – paddle shift disassembly).

5. Loosen the remote control switch screw and then separate the remote control switch.



6. Disconnect the remote control switch connector and then remove the remote control switch & lower cover.



7. Disconnect all the connector and then remove the steering wheel body.



8. Install in the reverse order of removal.

Paddle shift disassembly / install of Carbon fiber replacement shifters

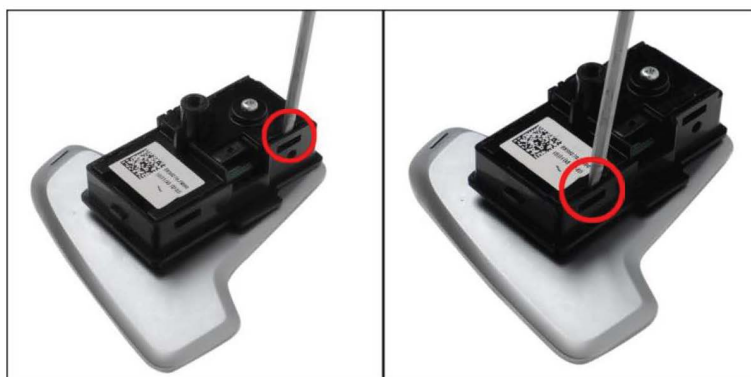
1. Pull paddles from the back
2. Disconnect paddle connectors from OEM paddles.
3. Use small "straight" pins to push the plastic pin (latch) out from the paddle shift bracket.
 - 3a. Push out the plastic pins from the OEM paddle shift bracket

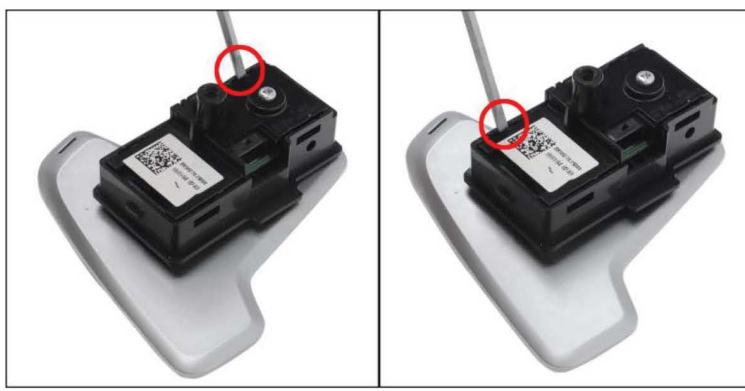


- 3b. Loosen the screws.



- 3c. Use flat head driver to insert and pry open.





3d. Use flat head driver to tilt this bracket in up position.



3c. Lift the entire bracket.



4. Install in the reverse order of removal and the bracket screws must be installed.

