

VMECA VACUUM CARTRIDGE

VC102

Features and Strengths

- Two stage – VMECA micro cartridge
- The most compact size multi stage vacuum ejector
- High vacuum level (-83 kPa) at low air pressure
- Extremely low air consumption
- Reliable performance despite inconsistent compressed air pressure
- International patent



Specifications

Description	VC102
Max. Vacuum level	-83 kPa
Open Vacuum flow	16 NI/min
Max. Feed pressure	7 bar
Temperature	-20 ~ 80 °C
Material	PPS, POM, NBR, AL(Holding plug)
Weight	0.7 g

Vacuum Flow

Model	Max. vacuum (-kPa)	Feed Pressure (bar)	Vacuum flow (NI/min) at different vacuum levels (-kPa)									
			0	10	20	30	40	50	60	70	80	90
VC102	50	1.1	11.5	6.3	2.2	1.6	0.7	-	-	-	-	-
	83	1.8	14.2	9.4	3.3	2.2	2	1.4	0.8	0.4	0.18	-
	83	2.2	16	11.9	5.1	2.3	1.4	1.3	0.9	0.3	0.12	-

Evacuation Time

Model	Feed Pressure (bar)	Air Consumption (NI/min)	Evacuation time in sec / liter to reach different vacuum levels (-kPa)									
			10	20	30	40	50	60	70	80	90	
VC102	1.1	5.9	0.68	3	6.1	11.8	27.2	-	-	-	-	
	1.8	8.2	0.4	1.48	4.3	6.9	9.1	15.3	27.4	50.2	-	
	2.2	10	0.34	1.6	3.9	7	10.4	17.5	30.9	61.4	-	

Build an Ordering No.

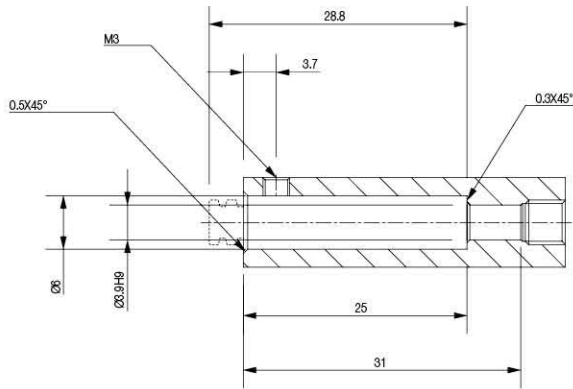
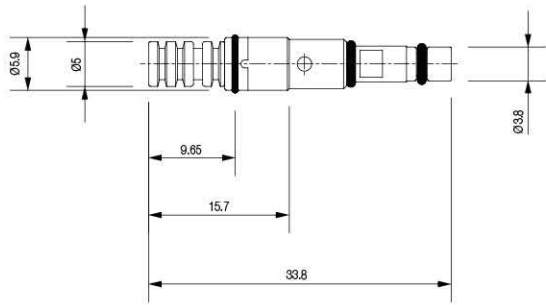
1. Cartridge	Description	Ordering No.
	Micro vacuum cartridge, 2-stage	VC102
	Micro vacuum cartridge, 2-stage, Holding plug	VC102P

Spare Parts – Plug

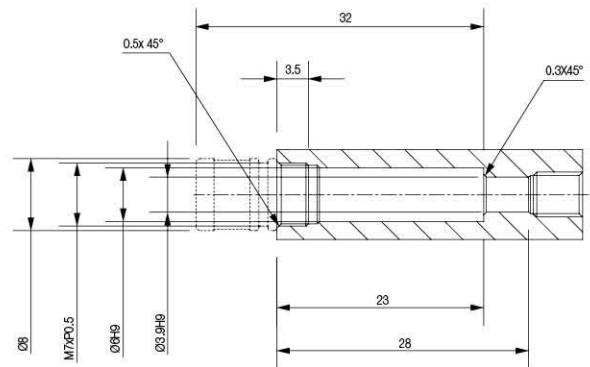
Model	Description	Weight (g)
VCP-M7	Holding plug	0.8

Dimension - Basic Pump

[Unit : mm]



VC102



VC102P

VMECA VACUUM CARTRIDGE

VC202

Features and Strengths

- Two stage – VMECA mini cartridge
- High vacuum level (-90 kPa) at low air pressure
- Efficient air consumption with high vacuum level and vacuum flow
- International patent
- Reliable performance despite inconsistent compressed air pressure



Specifications

Description	VC202
Max. Vacuum level	-90 kPa
Open Vacuum flow	41.3 NI/min
Max. Feed pressure	7 bar
Temperature	-20 ~ 80 °C
Material	PPS, POM, NBR, AL(Holding plug)
Weight	2.67 g

Vacuum Flow

Model	Max. vacuum (-kPa)	Feed Pressure (bar)	Vacuum flow (NI/min) at different vacuum levels (-kPa)									
			0	10	20	30	40	50	60	70	80	90
VC202	50	1.7	35	25.4	12.8	8.3	4	-	-	-	-	-
	65	2.2	38.8	29.5	17	11.5	8	5.2	1.4	-	-	-
	90	3.14	41.3	36.9	26	15.8	11	8.9	6.6	3.9	2	-
	85	4	40	36.5	31	23	14.1	7.6	6.4	3.9	1.3	-

Evacuation Time

Model	Feed Pressure (bar)	Air Consumption (NI/min)	Evacuation time in sec / liter to reach different vacuum levels (-kPa)								
			10	20	30	40	50	60	70	80	90
VC202	1.7	17	0.26	0.59	1.29	2.56	-	-	-	-	-
	2.2	20	0.18	0.48	0.95	1.55	2	2.5	-	-	-
	3.14	26	0.15	0.37	0.61	1.5	1.5	2	3.8	6.2	-
	4	32	0.14	0.39	0.59	0.9	1.2	1.8	3.2	6.9	-

Build an Ordering No.

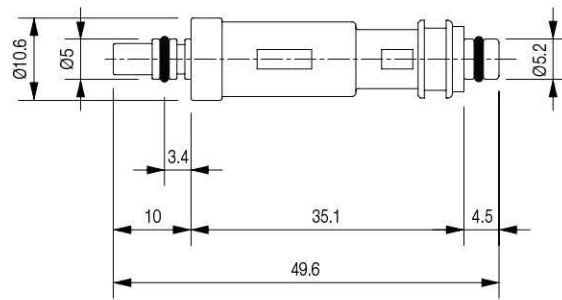
1. Cartridge	Description	Ordering No.
	Mini vacuum cartridge, 2-stage	VC202
	Mini vacuum cartridge, 2-stage, Non-return valve	VC202-N
	Mini vacuum cartridge, 2-stage, Holding plug	VC202P
	Mini vacuum cartridge, 2-stage, Holding plug, Non-return valve	VC202P-N

Spare Parts – Plug

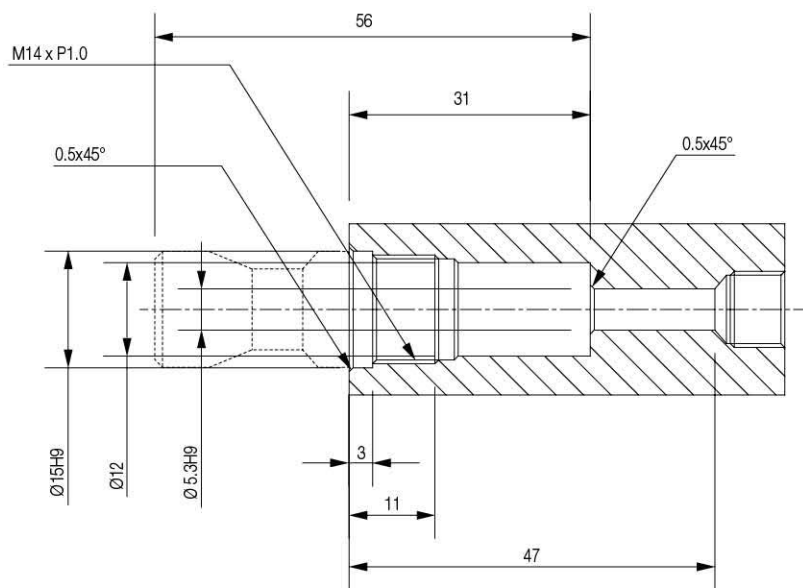
Model	Description	Weight (g)
VCP-M14	Holding plug	6.01

Dimension - Basic Pump

[Unit : mm]



VC202



VC202P

VMECA VACUUM CARTRIDGE

VC203

Features and Strengths

- Three stage – VMECA mini cartridge
- High vacuum level (-90 kPa) at low air pressure
- Efficient air consumption with high vacuum level and vacuum flow
- International patent
- Reliable performance despite inconsistent compressed air pressure



Specifications

Description	VC203
Max. Vacuum level	-90 kPa
Open Vacuum flow	85.8 NI/min
Max. Feed pressure	7 bar
Temperature	-20 ~ 80 °C
Material	PPS, POM, NBR, AL(Holding plug)
Weight	5.45 g

Vacuum Flow

Model	Max. vacuum (-kPa)	Feed Pressure (bar)	Vacuum flow (NI/min) at different vacuum levels (-kPa)									
			0	10	20	30	40	50	60	70	80	90
VC203	50	1.7	5.6	25.4	12.8	8.3	4	-	-	-	-	-
	65	2.2	67.2	29.5	17	11.5	8	5.2	1.4	-	-	-
	90	3.14	85.6	36.9	26	15.8	11	8.9	6.6	3.9	2	-
	85	4	85.8	42.7	31	23	14.1	7.6	6.4	3.9	1.3	-

Evacuation Time

Model	Feed Pressure (bar)	Air Consumption (NI/min)	Evacuation time in sec / liter to reach different vacuum levels (-kPa)									
			10	20	30	40	50	60	70	80	90	
VC203	1.7	17	0.12	0.49	1.2	2.4	-	-	-	-	-	-
	2.2	20	0.08	0.38	0.8	1.47	1.9	2.4	-	-	-	-
	3.14	26	0.06	0.28	0.52	1.4	1.4	2	3.2	6	-	-
	4	32	0.075	0.26	0.49	0.8	1	1.8	3	6.8	-	-

Build an Ordering No.

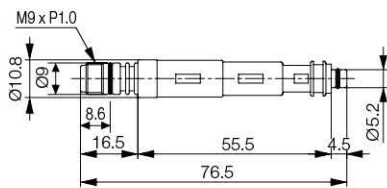
1. Cartridge	Description	Ordering No.
	Mini vacuum cartridge, 3-stage	VC203
	Mini vacuum cartridge, 3-stage, Non-return valve	VC203-N
	Mini vacuum cartridge, 3-stage, M14 Two-fold silencer	VC203S
	Mini vacuum cartridge, 3-stage, M14 Two-fold silencer, Non-return valve	VC203S-N
	Mini vacuum cartridge, 3-stage, M15 Direct silencer	VC203DS
	Mini vacuum cartridge, 3-stage, M15 Direct silencer, Non-return valve	VC203DS-N
	Mini vacuum cartridge, 3-stage, M15 Two-fold silencer	VC203LS
	Mini vacuum cartridge, 3-stage, M15 Two-fold silencer, Non-return valve	VC203LS-N
	Mini vacuum cartridge, 3-stage with vacuum filter, M16 silencer	VC203FS1
	Mini vacuum cartridge, 3-stage with vacuum filter, M16 silencer, Non-return valve	VC203FS1-N

Spare Parts – Plug & Silencer

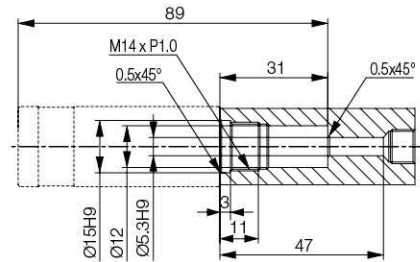
Part No.	Description	Weight (g)
VTS-M15	M15 Direct silencer	11.79
VTTS-M14	M14 Two-fold silencer	18.38
VTTS-M15	M15 Two-fold silencer	15.3
VTS-M16-203	M16 silencer	6.62

Dimension - Basic Pump

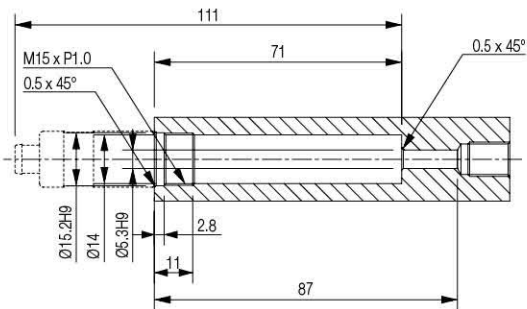
[Unit : mm]



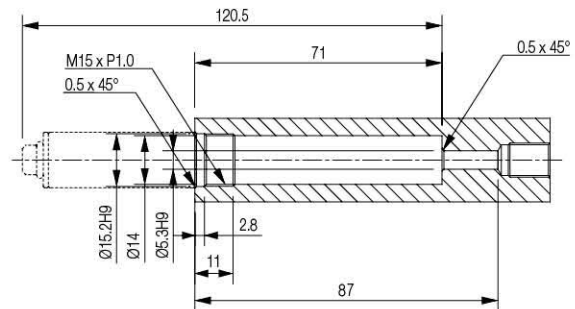
VC203



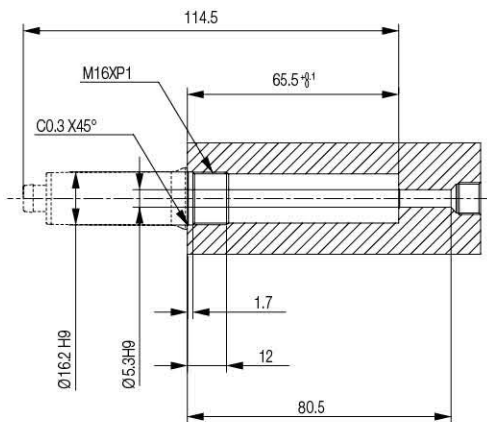
VC203S



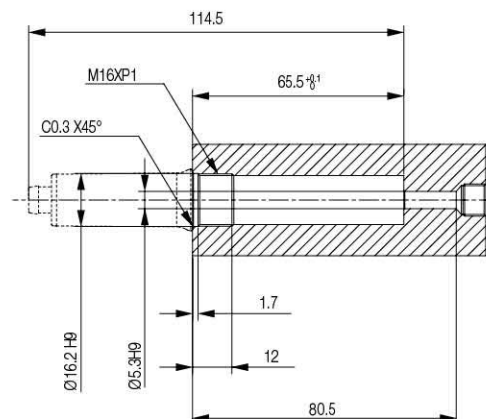
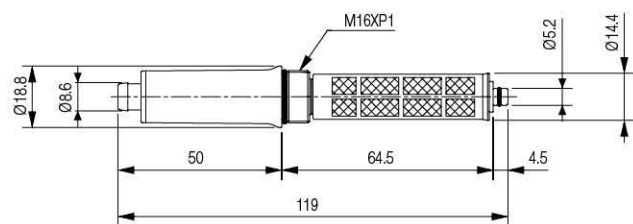
VC203DS



VC203LS



VC203



VC203FS1

VMECA VACUUM CARTRIDGE

VC252

Features and Strengths

- Two stage – VMECA mini premium cartridge
- Deep vacuum level (-94 kPa) with large vacuum flow (113NI/min)
- International patent
- Reliable performance despite inconsistent compressed air pressure



Specifications

Description	VC252
Max. Vacuum level	-94 kPa
Open Vacuum flow	113 NI/min
Max. Feed pressure	7 bar
Temperature	-20 ~ 80 °C
Material	PPS, POM, NBR, AL(Holding plug)
Weight	8.66 g

Vacuum Flow

Model	Max. vacuum (-kPa)	Feed Pressure (bar)	Vacuum flow (NI/min) at different vacuum levels (-kPa)									
			0	10	20	30	40	50	60	70	80	90
VC252	90	5	112	85	63	43	37	27	22	17	11	3.1
	94	5.5	113	91	69	48	30	26	22	17	11	2.8
	93.5	6	111	97	76.5	54	34	25	21	16	9.5	2.3

Evacuation Time

Model	Feed Pressure (bar)	Air Consumption (NI/min)	Evacuation time in sec / liter to reach different vacuum levels (-kPa)								
			10	20	30	40	50	60	70	80	90
VC252	5.0	70.5	0.039	0.15	0.27	0.49	0.60	0.94	2.09	2.82	4.83
	5.5	77.0	0.037	0.13	0.26	0.41	0.54	0.86	1.2	1.6	5.0
	6.0	83.5	0.035	0.078	0.12	0.13	0.33	0.83	1.15	1.76	5.8

Build an Ordering No.

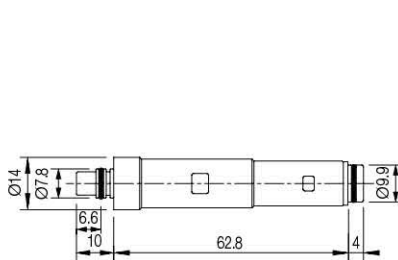
1. Cartridge	Description	Ordering No.
	Mini premium vacuum cartridge, 2-stage	VC252
	Mini premium vacuum cartridge, 2-stage, Non-return valve	VC252-N
	Mini premium vacuum cartridge, 2-stage, Holding plug	VC252P
	Mini premium vacuum cartridge, 2-stage, Holding plug, Non-return valve	VC252P-N
	Mini premium vacuum cartridge, 2-stage, Silencer	VC252S
	Mini premium vacuum cartridge, 2-stage, Silencer, Non-return valve	VC252S-N
	Mini premium vacuum cartridge, 2-stage with vacuum filter, M16 silencer	VC252PS
	Mini premium vacuum cartridge, 2-stage with vacuum filter, M16 silencer, Non-return valve	VC252PS-N

Spare Parts – Plug

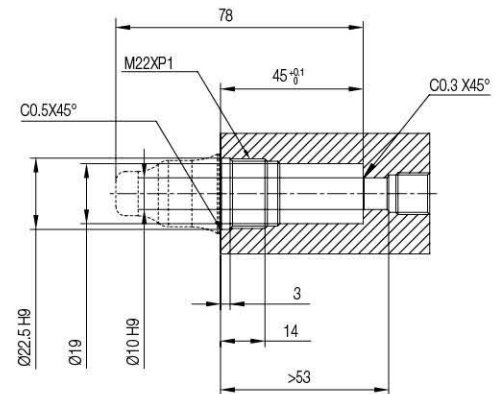
Model	Description	Weight (g)
VCP-M16-252	Holding plug	6.62
VTS-M16-252	M16 silencer	6.62

Dimension - Basic Pump

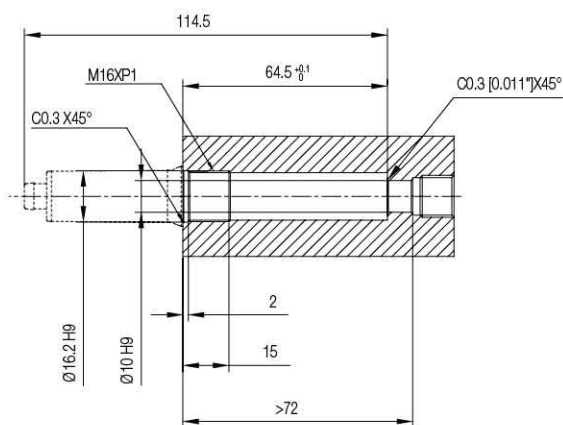
[Unit : mm]



VC252



VC252P



VC252FS1

VMECA VACUUM CARTRIDGE

VC253

Features and Strengths

- Three stage – VMECA mini premium cartridge
- Deep vacuum level (-94.5 kPa) with large vacuum flow (146NI/min)
- International patent
- Reliable performance despite inconsistent compressed air pressure



Specifications

Description	VC253
Max. Vacuum level	-94 kPa
Open Vacuum flow	146 NI/min
Max. Feed pressure	7 bar
Temperature	-20 ~ 80 °C
Material	PPS, POM, NBR, AL(Holding plug)
Weight	14.12 g

Vacuum Flow

Model	Max. vacuum (-kPa)	Feed Pressure (bar)	Vacuum flow (NI/min) at different vacuum levels (-kPa)									
			0	10	20	30	40	50	60	70	80	90
VC253	90	5.0	137	105	63	42	32.5	26	21	17	11	3.1
	94	5.5	141	109	71	51	32	26	22	17.5	11	2.8
	93.5	6.0	146	108	75	60	42	25	21	16	9.6	2.3

Evacuation Time

Model	Feed Pressure (bar)	Air Consumption (NI/min)	Evacuation time in sec / liter to reach different vacuum levels (-kPa)									
			10	20	30	40	50	60	70	80	90	
VC253	5.0	70.5	0.034	0.136	0.23	0.43	0.52	0.82	1.82	2.46	4.22	
	5.5	77.0	0.034	0.125	0.24	0.37	0.5	0.8	1.1	1.5	4.75	
	6.0	83.5	0.033	0.073	0.11	0.12	0.31	0.79	1.1	1.65	5.5	

Build an Ordering No.

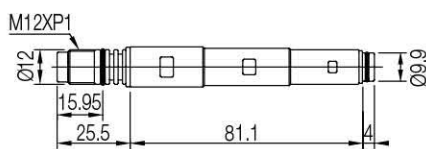
1. Cartridge	Description	Ordering No.
	Mini premium vacuum cartridge, 3-stage	VC253
	Mini premium vacuum cartridge, 3-stage, Non-return valve	VC253-N
	Mini premium vacuum cartridge, 3-stage, Holding plug	VC253P
	Mini premium vacuum cartridge, 3-stage, Holding plug, Non-return valve	VC253P-N
	Mini premium vacuum cartridge, 3-stage, Silencer	VC253S
	Mini premium vacuum cartridge, 3-stage, Silencer, Non-return valve	VC253S-N
	Mini premium vacuum cartridge, 3-stage with vacuum filter, M25 silencer	VC253FS1
	Mini premium vacuum cartridge, 3-stage with vacuum filter, M25 silencer, Non-return valve	VC253FS1-N

Spare Parts – Plug

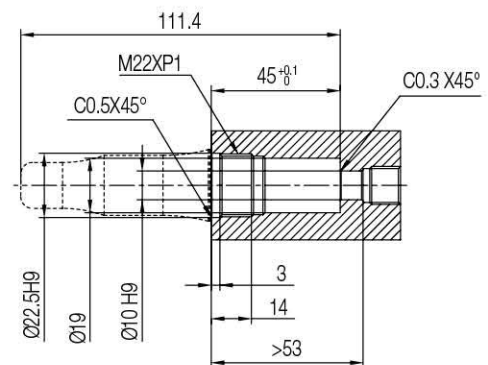
Model	Description	Weight (g)
VCP-M25-253	Holding plug	27.13
VTS-M25-253	M25 silencer	27.13

Dimension - Basic Pump

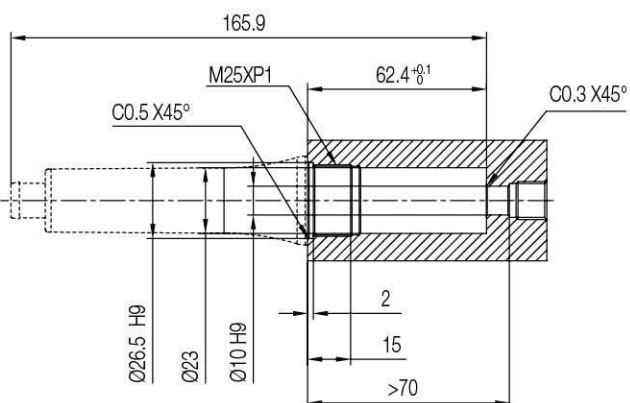
[Unit : mm]



VC253



VC253P



VC253FS1

VMECA VACUUM CARTRIDGE

VC302

Features and Strengths

- Two stage – VMECA midi cartridge
- High vacuum level (-92 kPa) at low air pressure
- Efficient air consumption with high vacuum level and vacuum flow
- International patent
- Reliable performance despite inconsistent compressed air pressure



Specifications

Description	VC302
Max. Vacuum level	-92 kPa
Open Vacuum flow	171 NI/min
Max. Feed pressure	7 bar
Temperature	-20 ~ 80 °C
Material	PPS, POM, NBR, AL(Holding plug)
Weight	12.29 g

Vacuum Flow

Model	Max. vacuum (-kPa)	Feed Pressure (bar)	Vacuum flow (NI/min) at different vacuum levels (-kPa)									
			0	10	20	30	40	50	60	70	80	90
VC302	55	1.7	158	104	71	41.5	22.5	7.35	-	-	-	-
	75	2.2	164	122.5	88	53	31.4	28.5	16.5	4.6	-	-
	92	3	170	152	106	64	33	32	22	16.5	6.4	1.9
	92	4	171	154	127.5	94	69	43	23.3	17.3	6.9	2.1

Evacuation Time

Model	Feed Pressure (bar)	Air Consumption (NI/min)	Evacuation time in sec / liter to reach different vacuum levels (-kPa)									
			10	20	30	40	50	60	70	80	90	
VC302	1.7	82	0.025	0.15	0.25	0.47	0.8	-	-	-	-	
	2.2	97	0.03	0.12	0.21	0.38	0.47	0.73	1.62	-	-	
	3	118	0.027	0.1	0.19	0.3	0.4	0.64	0.8	1.2	3.8	
	4	152	0.026	0.058	0.09	0.1	0.25	0.5	0.69	1.05	3.5	

Build an Ordering No.

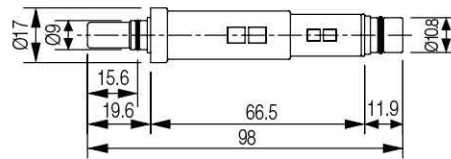
1. Cartridge	Description	Ordering No.
	Midi vacuum cartridge, 2-stage	VC302
	Midi vacuum cartridge, 2-stage, Non-return valve	VC302-N
	Midi vacuum cartridge, 2-stage, Holding plug	VC302P
	Midi vacuum cartridge, 2-stage, Holding plug, Non-return valve	VC302P-N

Spare Parts – Plug

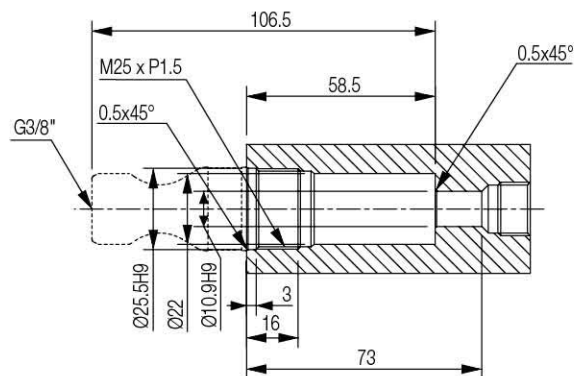
Model	Description	Weight (g)
VCP-M25-302	Holding plug	31.04

Dimension - Basic Pump

[Unit : mm]



VC302P



VC302P

VMECA VACUUM CARTRIDGE

VC303

Features and Strengths

- Three stage – VMECA midi cartridge
- High vacuum level (-92 kPa) at low air pressure
- Efficient air consumption with high vacuum level and vacuum flow
- International patent
- Reliable performance despite inconsistent compressed air pressure



Specifications

Description	VC303
Max. Vacuum level	-92 kPa
Open Vacuum flow	341 NI/min
Max. Feed pressure	7 bar
Temperature	-20 ~ 80 °C
Material	PPS, POM, NBR, AL(Holding plug)
Weight	24.63 g

Vacuum Flow

Model	Max. vacuum (-kPa)	Feed Pressure (bar)	Vacuum flow (NI/min) at different vacuum levels (-kPa)									
			0	10	20	30	40	50	60	70	80	90
VC303	55	1.7	243	104	71	41.5	22.5	7.35	-	-	-	-
	75	2.2	302	122.5	88	53	31.4	28.5	16.5	4.6	-	-
	92	3	338	152	106	64	33	32	22	16.5	6.4	1.9
	92	4	341	154	127.5	94	69	43	23.3	17.3	6.9	2.1

Evacuation Time

Model	Feed Pressure (bar)	Air Consumption (NI/min)	Evacuation time in sec / liter to reach different vacuum levels (-kPa)									
			10	20	30	40	50	60	70	80	90	
VC303	1.7	82	0.021	0.15	0.25	0.47	0.8	-	-	-	-	
	2.2	97	0.019	0.09	0.1	0.32	0.42	0.73	1.62	-	-	
	3	118	0.015	0.07	0.18	0.28	0.38	0.64	0.8	1.2	3.8	
	4	152	0.01	0.048	0.07	0.09	0.2	0.42	0.6	1	3.4	

Build an Ordering No.

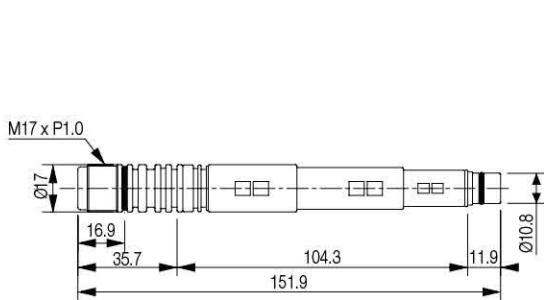
1. Cartridge	Description	Ordering No.
	Midi vacuum cartridge, 3-stage	VC303
	Midi vacuum cartridge, 3-stage, Non-return valve	VC303-N
	Midi vacuum cartridge, 3-stage, Holding plug	VC303P
	Midi vacuum cartridge, 3-stage, Holding plug, Non-return valve	VC303P-N
	Midi vacuum cartridge, 3-stage, M25 Two-fold silencer	VC303S
	Midi vacuum cartridge, 3-stage, M25 Two-fold silencer, Non-return valve	VC303S-N

Spare Parts – Plug

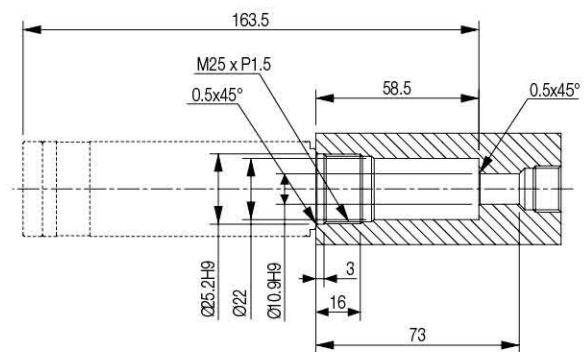
Model	Description	Weight (g)
VCP-M25-303	Holding plug	59.32
VTTS-M25	M25 Two-fold silencer	78.34

Dimension - Basic Pump

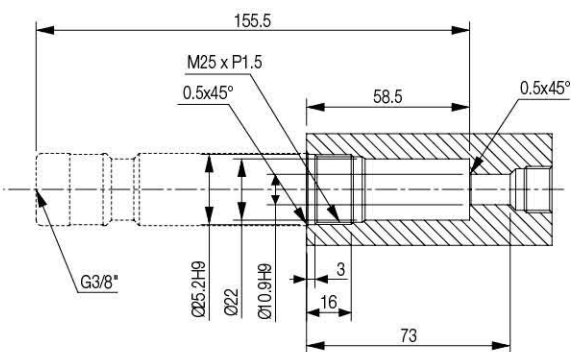
[Unit : mm]



VC303



VC303S



VC303P

VMECA VACUUM CARTRIDGE

VCL302

Features and Strengths

- Two stage – VMECA midi cartridge
- Large vacuum flow in efficient air consumption
- International patent
- Reliable performance despite inconsistent compressed air pressure



Specifications

Description	VCL302
Max. Vacuum level	-75 kPa
Open Vacuum flow	200 NI/min
Max. Feed pressure	7 bar
Temperature	-20 ~ 80 °C
Material	PPS, POM, NBR, AL(Holding plug)
Weight	12.14 g

Vacuum Flow

Model	Max. vacuum (-kPa)	Feed Pressure (bar)	Vacuum flow (NI/min) at different vacuum levels (-kPa)									
			0	10	20	30	40	50	60	70	80	90
VCL302	60	4	188	158	110	70	46	28	6.8	-	-	-
	70	5	195	176	130	82	50	37.5	23	11.3	-	-
	75	6	200	183	154	100	52	38	32	22	-	-

Evacuation Time

Model	Feed Pressure (bar)	Air Consumption (NI/min)	Evacuation time in sec / liter to reach different vacuum levels (-kPa)									
			10	20	30	40	50	60	70	80	90	
VCL302	4	70	0.035	0.084	0.17	0.29	0.38	0.8	-	-	-	
	5	85	0.027	0.08	0.15	0.25	0.3	0.4	0.8	-	-	
	6	104	0.028	0.08	0.12	0.2	0.28	0.36	0.6	-	-	

Build an Ordering No.

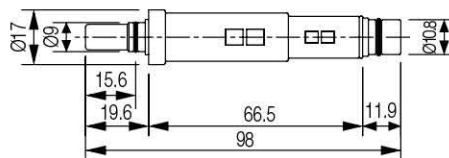
1. Cartridge	Description	Ordering No.
	Midi vacuum "L" cartridge, 3-stage	VCL302
	Midi vacuum "L" cartridge, 3-stage, Non-return valve	VCL302-N
	Midi vacuum "L" cartridge, 3-stage, Holding plug	VCL302P
	Midi vacuum "L" cartridge, 3-stage, Holding plug, Non-return valve	VCL302P-N

Spare Parts – Plug

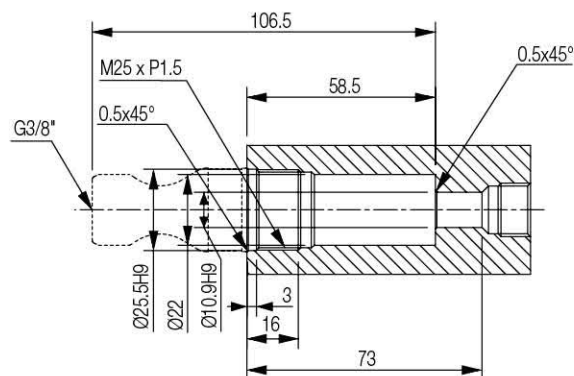
Model	Description	Weight (g)
VCP-M25-302	Holding plug	31.04

Dimension - Basic Pump

[Unit : mm]



VCL302P



VCL302P

VMECA VACUUM CARTRIDGE

VCL303

Features and Strengths

- Three stage – VMECA midi cartridge
- Large vacuum flow in efficient air consumption
- International patent
- Reliable performance despite inconsistent compressed air pressure



Specifications

Description	VCL303
Max. Vacuum level	-75 kPa
Open Vacuum flow	362 NI/min
Max. Feed pressure	7 bar
Temperature	-20 ~ 80 °C
Material	PPS, POM, NBR, AL(Holding plug)
Weight	24.12 g

Vacuum Flow

Model	Max. vacuum (-kPa)	Feed Pressure (bar)	Vacuum flow (NI/min) at different vacuum levels (-kPa)									
			0	10	20	30	40	50	60	70	80	90
VCL303	60	4	302	176	110	70	46	28	6.8	-	-	-
	70	5	344	200	130	82	50	37.5	23	11.9	-	-
	75	6	362	215	154	100	52	38	32	22	-	-

Evacuation Time

Model	Feed Pressure (bar)	Air Consumption (NI/min)	Evacuation time in sec / liter to reach different vacuum levels (-kPa)									
			10	20	30	40	50	60	70	80	90	
VCL303	4	70	0.028	0.09	0.17	0.29	0.38	0.8	-	-	-	
	5	85	0.013	0.08	0.15	0.25	0.3	0.4	0.8	-	-	
	6	104	0.012	0.07	0.12	0.2	0.28	0.36	0.6	-	-	

Build an Ordering No.

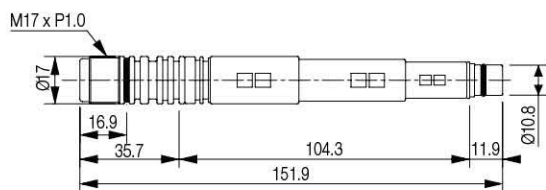
1. Cartridge	Description	Ordering No.
	Midi vacuum "L" cartridge, 3-stage	VCL303
	Midi vacuum "L" cartridge, 3-stage, Non-return valve	VCL303-N
	Midi vacuum "L" cartridge, 3-stage, Holding plug	VCL303P
	Midi vacuum "L" cartridge, 3-stage, Holding plug, Non-return valve	VCL303P-N
	Midi vacuum "L" cartridge, 3-stage, M25 Two-fold silencer	VCL303S
	Midi vacuum "L" cartridge, 3-stage, M25 Two-fold silencer, Non-return valve	VCL303S-N

Spare Parts – Plug

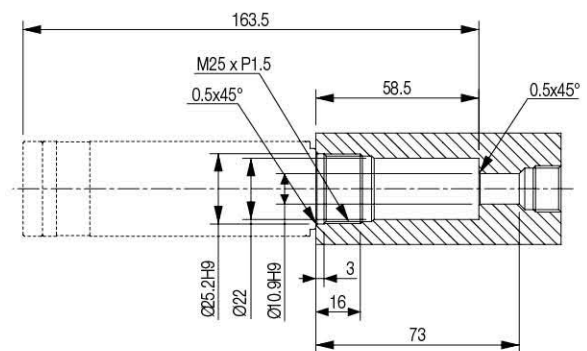
Model	Description	Weight (g)
VCP-M25-303	Holding plug	59.32
VTTS-M25	M25 Two-fold silencer	78.34

Dimension - Basic Pump

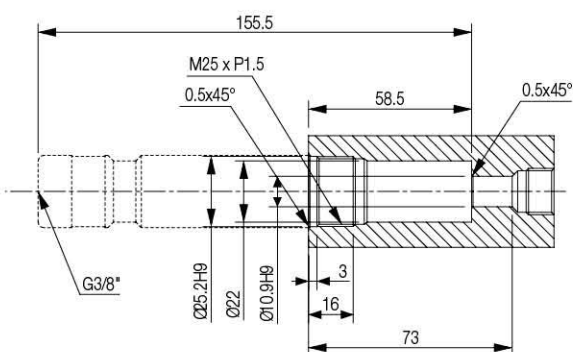
[Unit : mm]



VCL303



VCL303S



VCL303P

VMECA VACUUM CARTRIDGE

VCX303

Features and Strengths

- Three stage – VMECA midi cartridge
- Deep end vacuum level upto -95kpa
- Available for customized plug
- International patent - Reliable performance despite inconsistent compressed air pressure
- Quick response time when deep vacuum is needed



Specifications

Description	VCX303
Max. Vacuum level	-95 kPa
Open Vacuum flow	310 NI/min
Max. Feed pressure	6 bar
Temperature	-20 ~ 80 °C
Material	PPS,POM,NBR,AL(Holding plug)
Weight	24.12 g

Vacuum Flow

Model	Max. vacuum (-kPa)	Feed Pressure (bar)	Vacuum flow (NI/min) at different vacuum levels (-kPa)									
			0	10	20	30	40	50	60	70	80	90
VCX303	95	4.5	266	192	130	82	52	43	31	20	12	1
	94.8	5	282	203	133	116	70	42	30	20	12	1
	94.5	6	310	223	132	122	101	60	27	19	9	1

Evacuation Time

Model	Feed Pressure (bar)	Air Consumption (NI/min)	Evacuation time in sec / liter to reach different vacuum levels (-kPa)									
			10	20	30	40	50	60	70	80	90	
VCX303	4.5	124	0.013	0.071	0.144	0.25	0.33	0.61	0.8	1.3	3.1	
	5	126	0.013	0.07	0.129	0.23	0.3	0.57	0.75	1.2	3.1	
	6	140	0.011	0.058	0.1	0.18	0.24	0.48	0.62	1.1	3	

Build an Ordering No.

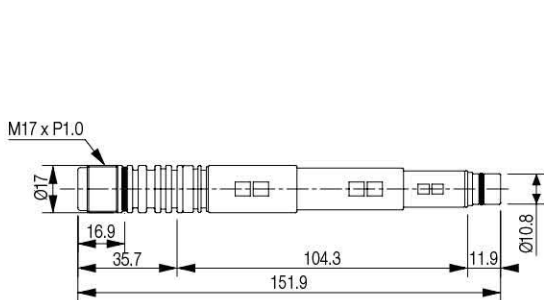
1. Cartridge	Description	Ordering No.
	Midi vacuum "X" cartridge, 3-stage	VCX303
	Midi vacuum "X" cartridge, 3-stage , Non-return valve	VCX303-N
	Midi vacuum "X" cartridge, 3-stage, Holding plug	VCX303P
	Midi vacuum "X" cartridge, 3-stage, Holding plug, Non-return valve	VCX303P-N
	Midi vacuum "X" cartridge, 3-stage, M25 Two-fold silencer	VCX303S
	Midi vacuum "X" cartridge, 3-stage, M25 Two-fold silencer, Non-return valve	VCX303S-N

Spare Parts – Plug

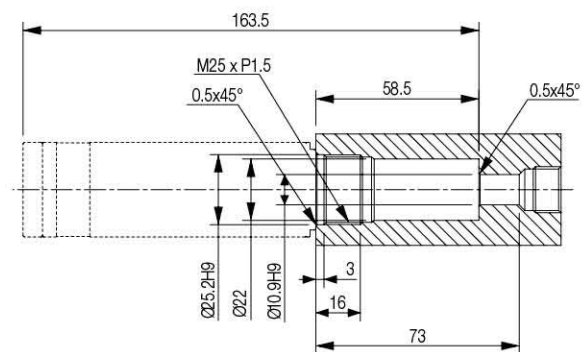
Model	Description	Weight (g)
VC-M25-303	Holding plug	59.32
VTTS-M25	M25 Two-fold silencer	78.34

Dimension - Basic Pump

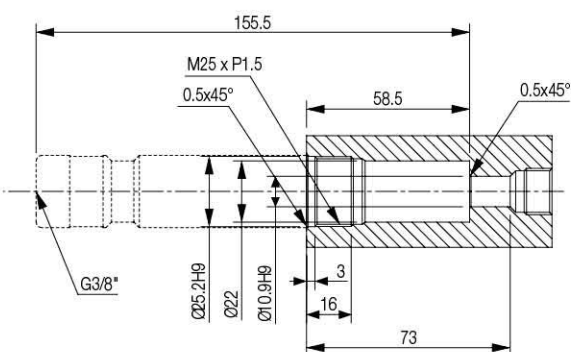
[Unit : mm]



VCX303



VCX303S



VCX303P