



Pneutech
Pneumatics Australia



INDUSTRIAL . AUTOMOTIVE . AUTOMATION . ENERGY

SMART AUTOMOTIVE SOLUTIONS



INTELLIGENT SOLUTIONS FOR MORE EFFICIENCY AND SAFETY

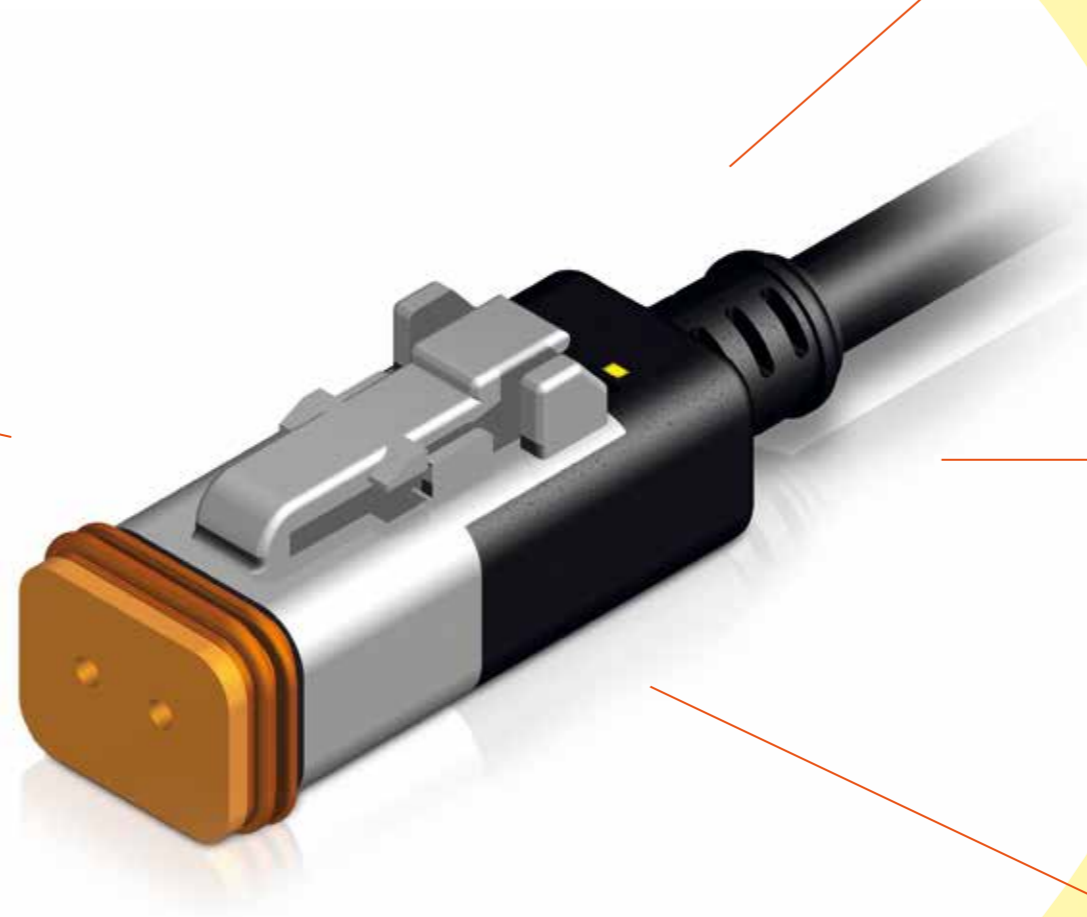
BETTER HANDLING

COMPACT DESIGN

LED OR SURGE SUPPRESSION OPTINAL

PROTECTION CLASS IP 67

HIGH EXTRACTION FORCE



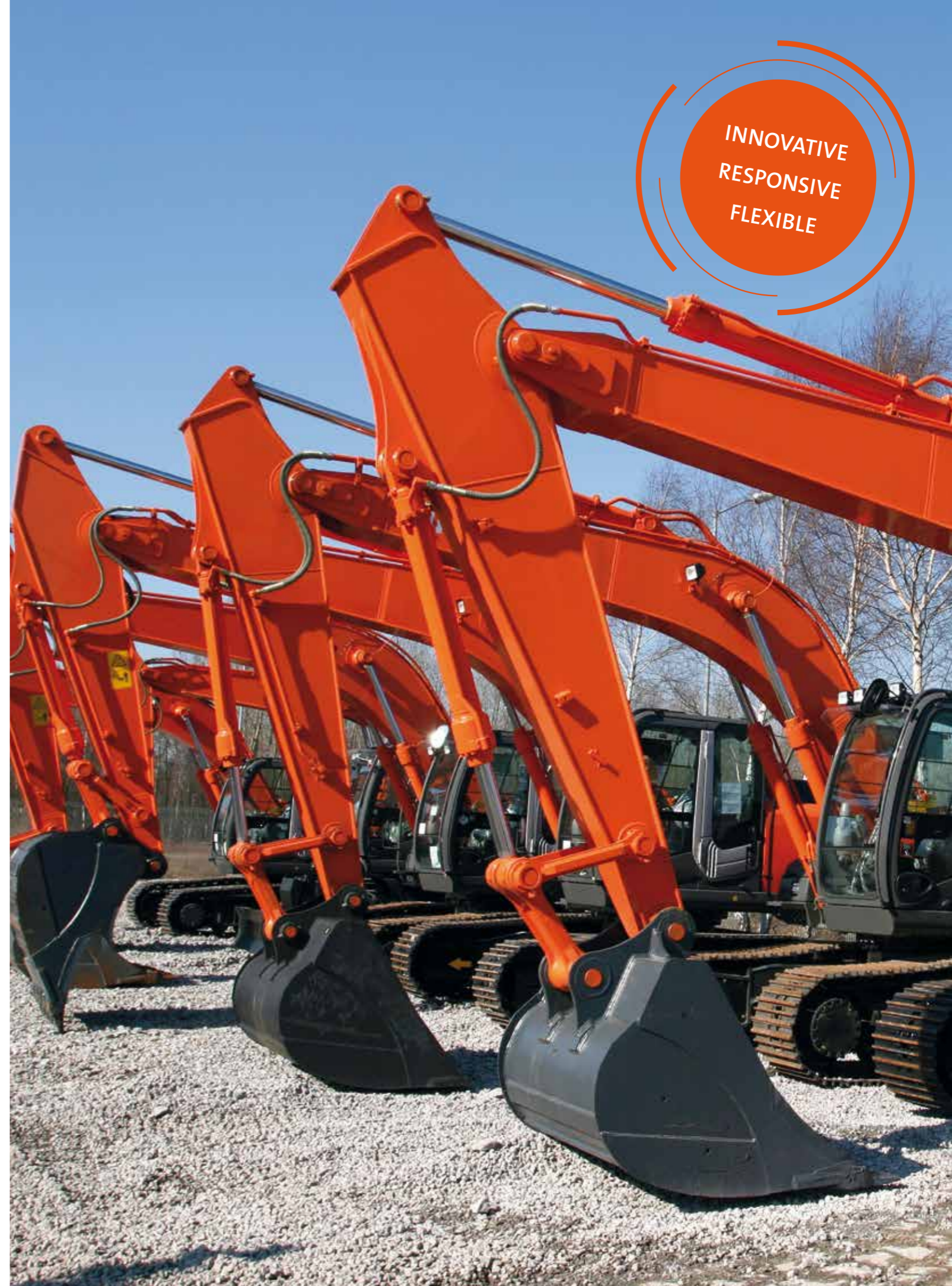
QUALITY AND INNOVATIONS FROM GERMANY

FOUNDED IN 1974, PETERS INDU-PRODUKT HAS DEVELOPED INTO A COMPANY THAT OPERATES ON AN INTERNATIONAL BASE. PERFECTION IS OUR CONSTANT AIM AND TECHNICAL KNOWLEDGE IS THE TOOL WE USE TO ACHIEVE IT. WITH THIS STRATEGY, WE HAVE DEVELOPED A STANDARD OF QUALITY THAT HAS CONTINUALLY CONVINCED CUSTOMERS WORLDWIDE. WE ARE CONSTANTLY EXPANDING OUR PRODUCT PORTFOLIOS IN THE INDUSTRIAL, AUTOMOTIVE, AUTOMATION AND ENERGY FIELDS. MOREOVER, WE DEVELOP TAILOR-MADE SOLUTIONS THAT SUIT THE NEEDS OF OUR CUSTOMERS – RIGHT FROM THE INITIAL IDEA TO THE FINISHED PRODUCT.



Our “Automotive” business field comprises a wide range of molded connectors such as Deutsch DT-series, Tyco Super Seal, Tyco Junior Power Timer and the Delphi Metri-Pack. They are commonly used in mobile applications, agricultural equipment and the hydraulic industry. We offer standard connectors as well as customer specific connectors, made in our factory. To individualize and customize our products we develop solutions in our in-house tool shop. Our molded connector lines ensure a better handling, short construction form and a higher extraction force with an ambient temperature between -20°C and +80°C. A surge suppression or a LED-version of the connectors is available as an option.

Please feel free to contact us if you have any questions.



TYCO SUPERSEAL

2-POLE

Tyco Superseal
2-pole



1 – Male
2 – Female

DETAILS

- _ Rated voltage **0 to 24 VDC**
- _ Operating current **11A**
- _ Cable **2 x 1,0 mm²**
- _ Connector **AMP SUPERSEAL 1,5 Series 2-pol.**
- _ Protection class **IP 67**
- _ Housing material **PA**
- _ Locking system **snap-lock**
- _ Temperature range **-20° C to +80° C**

TYCO SUPERSEAL

3-POLE

Tyco Superseal
3-pole



1 – Male
2 – Female

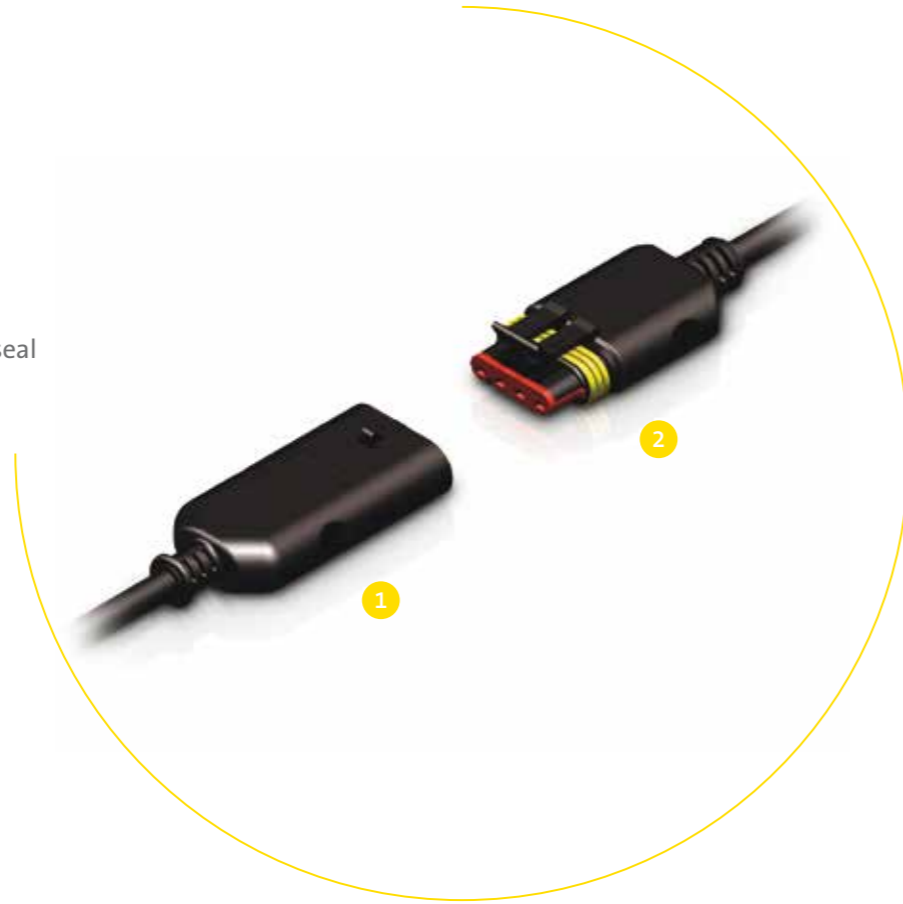
DETAILS

- _ Rated voltage **0 to 24 VDC**
- _ Operating current **11A**
- _ Cable **3 x 1,0 mm²**
- _ Connector **AMP SUPERSEAL 1,5 Series 3-pol.**
- _ Protection class **IP 67**
- _ Housing material **PA**
- _ Locking system **snap-lock**
- _ Temperature range **-20° C to +80° C**

TYCO SUPERSEAL

4-POLE

Tyco Superseal
4-pole



1 – Male
2 – Female

DETAILS

- _ Rated voltage **0 to 24 VDC**
- _ Operating current **11A**
- _ Cable **4 x 1,0 mm²**
- _ Connector **AMP SUPERSEAL 1,5 Series 4-pol.**
- _ Protection class **IP 67**
- _ Housing material **PA**
- _ Locking system **snap-lock**
- _ Temperature range **-20° C to +80° C**

TYCO SUPERSEAL

5-POLE

Tyco Superseal
5-pole



1 – Male
2 – Female

DETAILS

- _ Rated voltage **0 to 24 VDC**
- _ Operating current **11A**
- _ Cable **5 x 1,0 mm²**
- _ Connector **AMP SUPERSEAL 1,5 Series 5-pol.**
- _ Protection class **IP 67**
- _ Housing material **PA**
- _ Locking system **snap-lock**
- _ Temperature range **-20° C to +80° C**

TYCO SUPERSEAL

6-POLE

Tyco Superseal
6-pole



1 – Male
2 – Female

DETAILS

_ Rated voltage **0 to 24 VDC**

_ Operating current **11A**

_ Cable **6 x 1,0 mm²**

_ Connector **AMP SUPERSEAL 1,5 Series 6-pol.**

_ Protection class **IP 67**

_ Housing material **PA**

_ Locking system **snap-lock**

_ Temperature range **-20° C to +80° C**

ORDER CODE

TYCO SUPERSEAL

2-POLE

Type	2 m	5 m	10 m
	Part No.	Part No.	Part No.
1 – Male	932068	932069	932070
2 – Female	932071	932072	932073

3-POLE

Type	2 m	5 m	10 m
	Part No.	Part No.	Part No.
1 – Male	932074	932075	932076
2 – Female	932077	932078	932079

4-POLE

Type	2 m	5 m	10 m
	Part No.	Part No.	Part No.
1 – Male	932080	932081	932082
2 – Female	932083	932084	932085

5-POLE

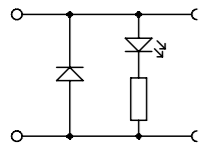
Type	2 m	5 m	10 m
	Part No.	Part No.	Part No.
1 – Male	932086	932087	932088
2 – Female	932089	932090	932091

6-POLE

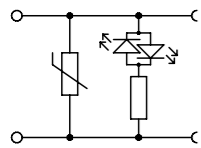
Type	2 m	5 m	10 m
	Part No.	Part No.	Part No.
1 – Male/Stecker	932092	932093	932094
2 – Female/Buchse	932095	932096	932097

DEUTSCH DT 2-POLE/LED

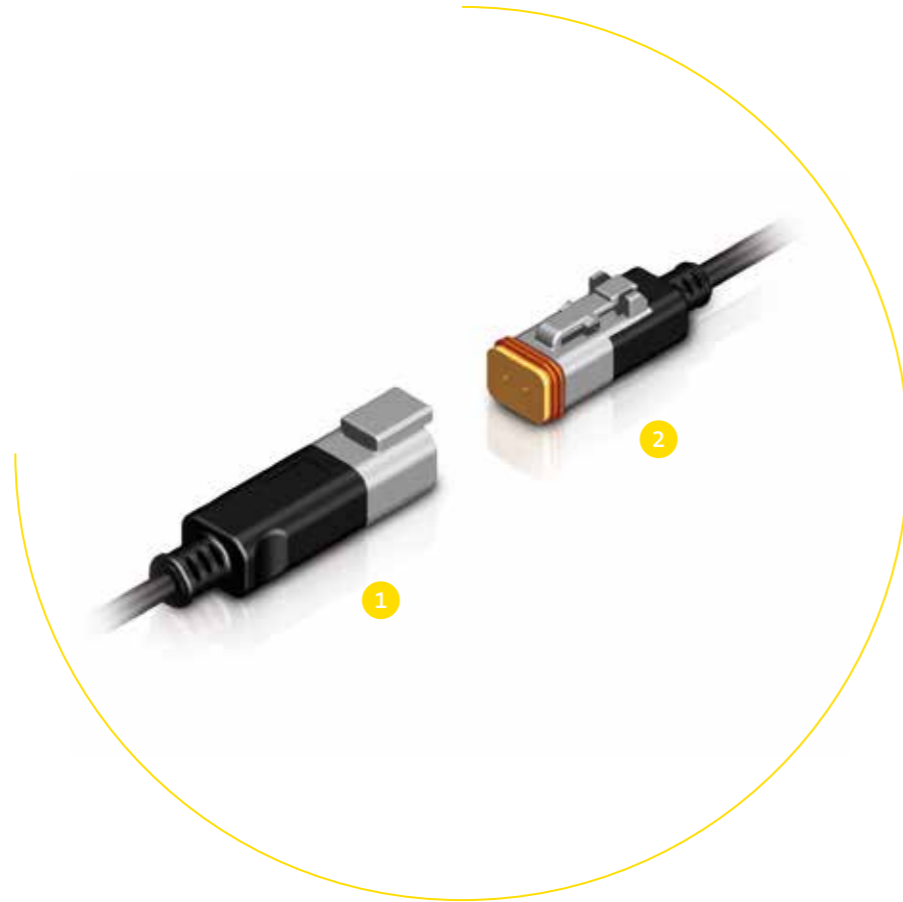
Deutsch DT
2-pole/LED



YD: LED+Diode 24VDC



YV: LED+Varistor 24VAC/DC



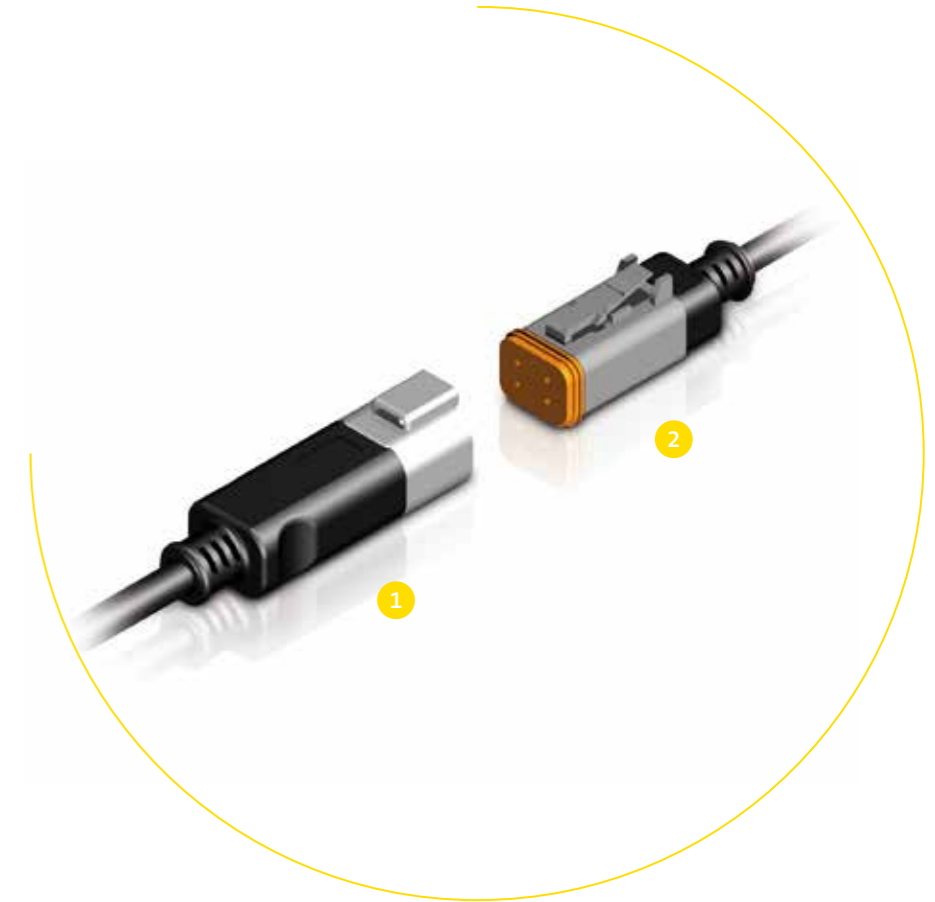
1 – Male
2 – Female

DETAILS

- _ Rated voltage **10 to 30 V**
- _ Operating current **2A**
- _ Max. load **60W/50VA**
- _ Cable **2 x 0,75 mm²**
- _ Operating indicator **LED yellow**
- _ Connector **Deutsch DT 06-25**
- _ Protection class **IP 67**
- _ Housing material **PA**
- _ Locking system **snap-lock**
- _ Temperature range **-20° C to +80° C**

DEUTSCH DT 4-POLE

Deutsch DT
4-pole



1 – Male
2 – Female

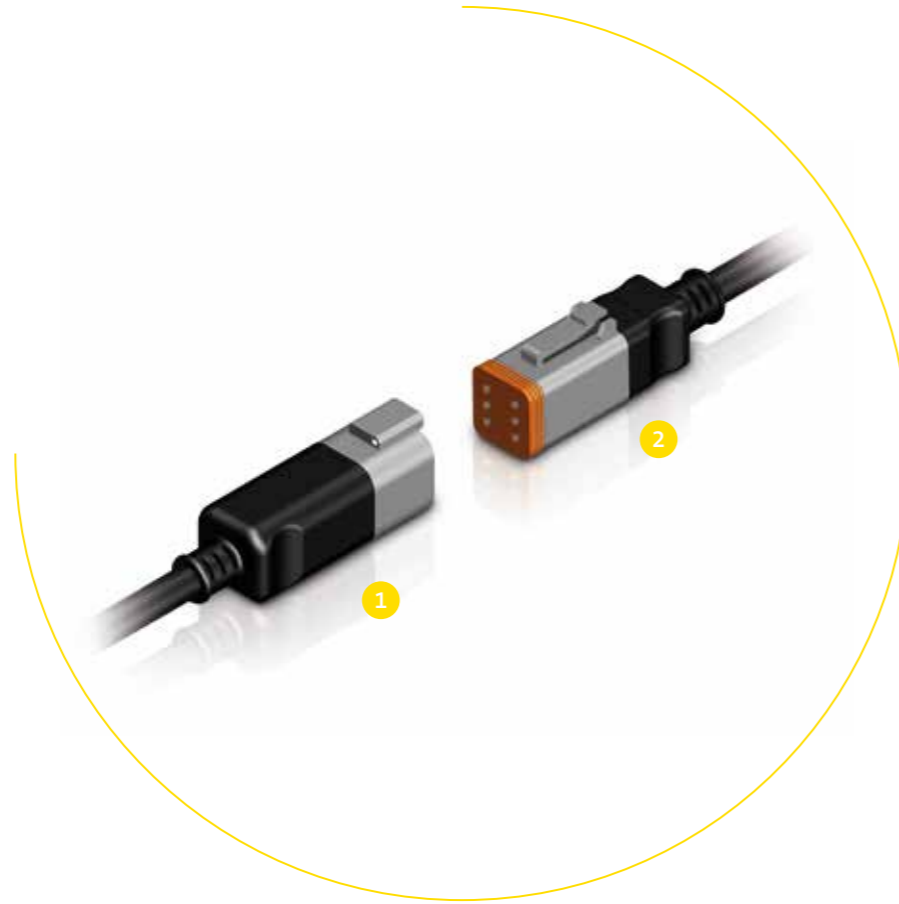
DETAILS

- _ Rated voltage **0 to 48 V**
- _ Operating current **10A**
- _ Cable **4 x 1,0 mm²**
- _ Connector **Deutsch DT Serie**
- _ Protection class **IP 67**
- _ Housing material **PA**
- _ Locking system **snap-lock**
- _ Temperature range **-20° C to +80° C**

DEUTSCH DT

6-POLE

Deutsch DT
6-pole



1 – Male
2 – Female

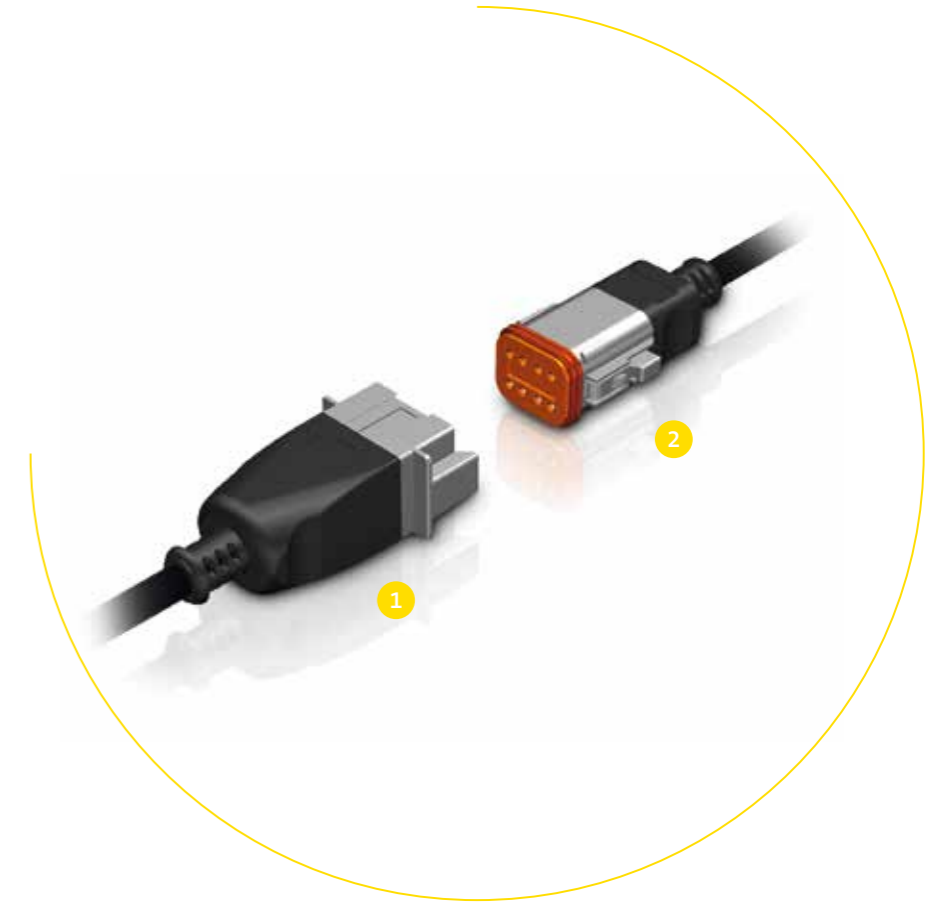
DETAILS

- _ Rated voltage **0 to 48 V**
- _ Operating current **10A**
- _ Cable **6 x 1,0 mm²**
- _ Connector **Deutsch DT Serie**
- _ Protection class **IP 67**
- _ Housing material **PA**
- _ Locking system **snap-lock**
- _ Temperature range **-20° C to +80° C**

DEUTSCH DT

8-POLE

Deutsch DT
8-pole



1 – Male
2 – Female

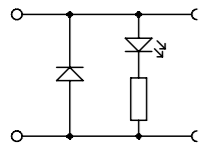
DETAILS

- _ Rated voltage **0 to 48 V**
- _ Operating current **10A**
- _ Cable **8 x 1,0 mm²**
- _ Connector **Deutsch DT Serie**
- _ Protection class **IP 67**
- _ Housing material **PA**
- _ Locking system **snap-lock**
- _ Temperature range **-20° C to +80° C**

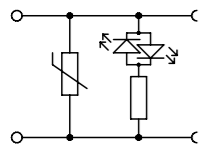
DEUTSCH DT06-2S

2-POLE/LED

Deutsch DT 06-2S
2-pole/LED



YD: LED+Diode 24VDC



YV: LED+Varistor 24VAC/DC

DETAILS

_ Rated voltage **10 to 30 V**

_ Operating current **2A**

_ Max. load **60W/50VA**

_ Cable **2 x 0,75 mm²**

_ Operating indicator **LED yellow**

_ Connector **Deutsch DT 06-2S**

_ Protection class **IP 67**

_ Housing material **PA**

_ Locking system **snap-lock**

_ Temperature range **-20° C to +80° C**

ORDER CODE/

DEUTSCH DT

2-POLE

Type	2 m Part No./	5 m Part No./	10 m Part No./	Optional
1 – Male/Stecker	922046	922047	922048	
1 – Male/Stecker	922101	922102	922103	LED + Diode
1 – Male/Stecker	922104	922105	922106	LED + Varistor
2 – Female/Buchse	922037	922038	922039	
2 – Female/Buchse	922302	922305	922310	LED + Diode
2 – Female/Buchse	922202	922205	922210	LED + Varistor

4-POLE

Type	2 m Part No./	5 m Part No./	10 m Part No./
1 – Male DT04-4P	922049	922050	922051
2 – Female DT06-4S	922040	922041	922042

6-POLE

Type	2 m Part No./	5 m Part No./	10 m Part No./
1 – Male DT04-6P	922052	922053	922054
2 – Female DT06-6S	922043	922044	922045

8-POLE

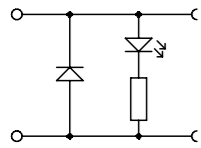
Type	2 m Part No./	5 m Part No./	10 m Part No./
1 – Male DT04-8P	922121	922122	922123
2 – Female DT06-8S	922118	922119	922120

DEUTSCH DT06-2S

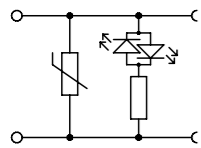
Type/Ausführung	2 m Part No./	5 m Part No./	10 m Part No./	Optional
Male & Female	922107	922108	922109	
Male & Female	922110	922111	922112	LED + Diode
Male & Female	922113	922114	922115	LED + Varistor

TYCO JUNIOR POWER TIMER LED AND SUPPRESSION

Tyco Junior Power Timer
Power and control cable



YD: LED+Diode 24VDC



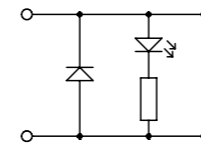
YV:LED+Varistor24VAC/DC

DETAILS

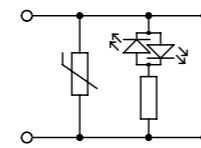
- _ Rated voltage **10 to 30 V**
- _ Operating current **2A**
- _ Max. load **60W/50VA**
- _ Cable **2 x 0,75 mm²**
- _ Operating indicator **LED yellow**
- _ Connector **Junior Power Timer 2-pol.**
- _ Protection class **IPX 4K**
- _ Housing material **PA**
- _ Locking system **locking spring**
- _ Temperature range **-20° C to +80° C**

TYCO JUNIOR POWER TIMER LED AND SUPPRESSION

Tyco Junior Power Timer
Single conductors



YD: LED+Diode 24VDC



YV:LED+Varistor24VAC/DC

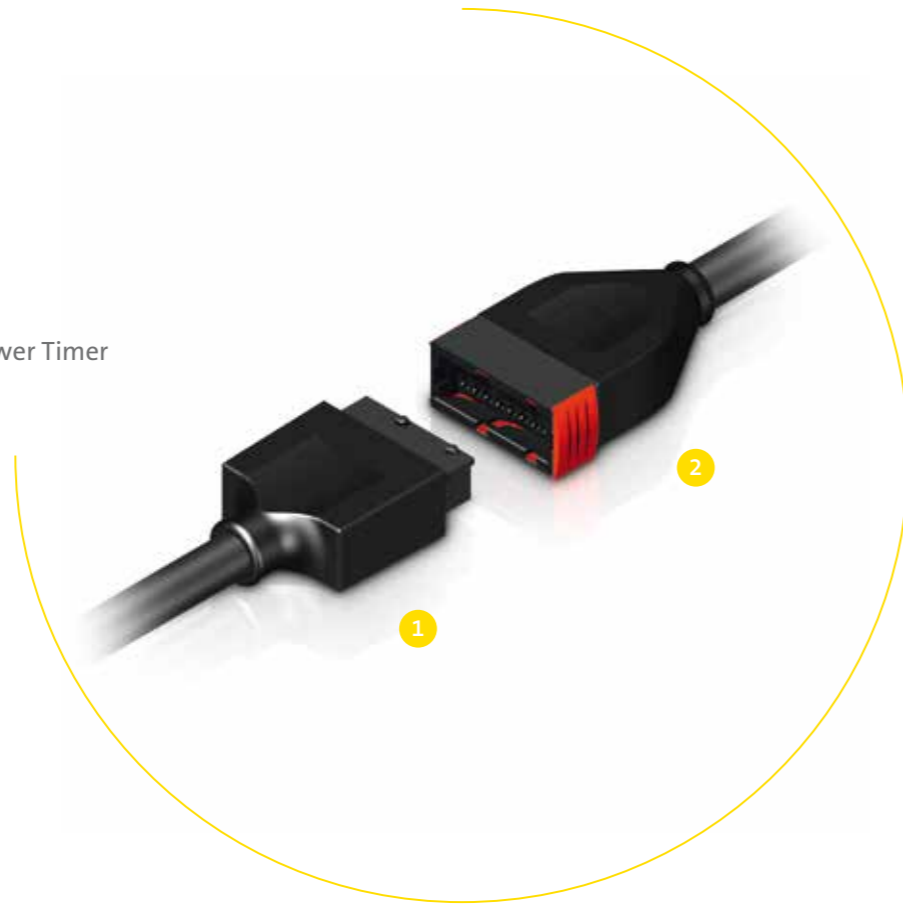
DETAILS

- _ Rated voltage **10 to 30 V**
- _ Operating current **2A**
- _ Max. load **60W/50VA**
- _ Cable **FLRY 2x 1,0mm² rd/bk**
- _ Operating indicator **LED yellow**
- _ Connector **Junior Power Timer 2-pol.**
- _ Protection class **IPX 4K**
- _ Housing material **PA**
- _ Locking system **locking spring**
- _ Temperature range **-20° C to +80° C**

TYCO JUNIOR POWER TIMER

16-POLE

Tyco Junior Power Timer
16-pole



1 – Male
2 – Female

DETAILS

_ Rated voltage **0 to 16 V**

_ Operating current **10A**

_ Cable **16 x 1,5 mm²**

_ Connector **Junior Power Timer 16-poles**

_ Protection class **IPX 4K**

_ Housing material **PA**

_ Locking system **sliding lock**

_ Temperature range **-20° C to +80° C**

_ Various versions upon request

ORDER CODE

TYCO JUNIOR POWER TIMER

POWER AND CONTROL CABLE

Circuit	2 m	5 m	10 m
	Part No.	Part No.	Part No.
LED + Diode	924302	924305	924310
LED + Varistor	924202	924205	924210

SINGLE CONDUCTORS/LITZE

Circuit	2 m	5 m	10 m
	Part No.	Part No.	Part No.
LED + Diode	914302	914305	914310
LED + Varistor	914202	914205	914210

16-POLE/16-POLIG

Type	2 m	5 m	10 m
	Part No.	Part No.	Part No.
1 – Male	909007	909008	909009
2 – Female	909010	909011	909012

DELPHI METRI-PACK

6-POLE

Delphi Metri-Pack
6-pole



DETAILS

- _ Rated voltage **0 to 24 VDC**
- _ Operating current **4A**
- _ Cable **6 x 0,34 mm²**
- _ Connector **Delphi Metri-Pack 150.2 Serie**
- _ Protection class **IP 67**
- _ Housing material **PA**
- _ Locking system **snap-lock**
- _ Temperature range **-20° C to +80° C**

DELPHI METRI-PACK

10-POLE

Delphi Metri-Pack
10-pole



DETAILS

- _ Rated voltage **0 to 24 VDC**
- _ Operating current **10A**
- _ Cable **10 x 1,0 mm²**
- _ Connector **Delphi Metri-Pack 150 Serie**
- _ Protection class **IP 67**
- _ Housing material **PA**
- _ Locking system **snap-lock**
- _ Temperature range **-20° C to +80° C**

ST3 CONNECTOR-DIN9680

2-POLE

ST3 Connector-DIN 9680
2-pole



DETAILS

_ Rated voltage **6 to 24 VDC**

_ Operating current **25A**

_ Cable **2 x 2,5 mm²**

_ Connector **ST3, DIN 9680**

_ Protection class **IP 54**

_ Housing material **PA**

_ Locking system **socket retaining claw**

_ Temperature range **-25° C to +75° C**

_ Female version available

CUSTOMIZED SPLITTER WITH VARIOUS CONNECTORS UPON REQUEST – 2-WAY/3-WAY PRE-WIRED

2-way



3-way



OTHER CONFIGURATIONS UPON REQUEST!

Type	Request No.
2-way	99-002-2
3-way	99-002-3
4-way	Upon request

ORDER CODE

DELPHI METRI-PACK

6-POLE

Circuit	2 m	5 m	10 m
	Part No.	Part No.	Part No.
12162261/ Female	909001	909002	909003

10-POLE

Circuit	2 m	5 m	10 m
	Part No.	Part No.	Part No.
12065425/ Female	909004	909005	909006

ORDER CODE

ST3 CONNECTOR-DIN9680

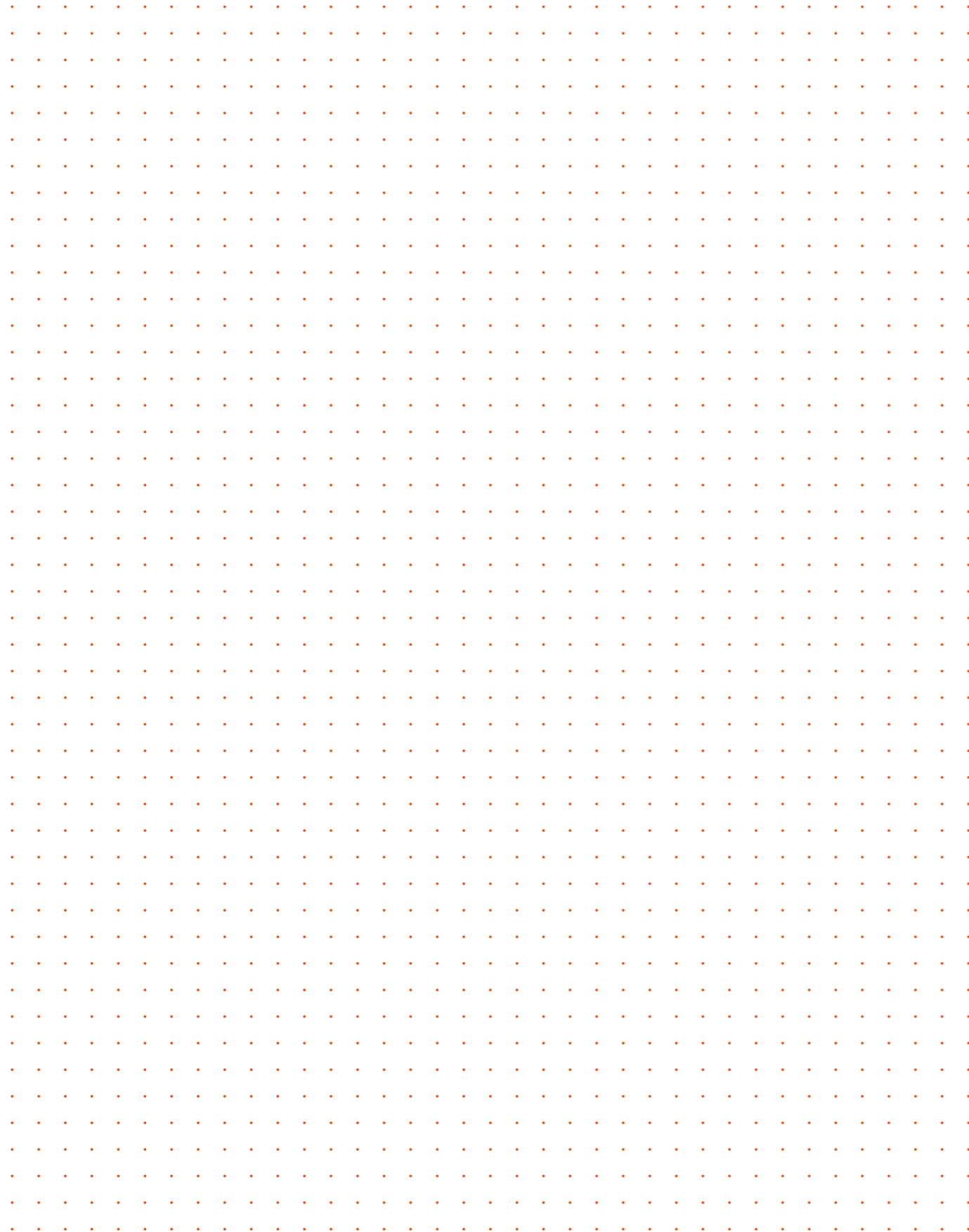
2-POLE

Type	2 m	5 m	10 m
	Part No./	Part No./	Part No./
Male	909013	909014	909015

OTHER CABLES UPON REQUEST!

PERFECT
SOLUTIONS BY
GERMAN
ENGINEERING

NOTES







PRODUCT PORTFOLIO EXTRACT



industrial

				
Connector DIN-EN	Valve Timer	Pressure Switch Electronic	Pressure Switch Hydraulic	Pressure Switch Pneumatic

energy

			
Safety Gas Valve 1/2" up to 1" EN161	Safety Gas Valve 1 1/2" up to DN 300 EN161	Gas Filter	PWM Energy Saving Module

automation

				
Connector M12	Connector M12	M12 Actuator-/ Sensor-Box	M8 Actuator-/ Sensor-Box	Connector M12 Field attachable

HEAD OFFICE
Toll Free: T > 1300 879 613 F > 1300 952 641
E > sales@pneutech.com.au W > www.pneutech.com.au
3 Argent Place, Ringwood Victoria 3134 Australia



Pneutech

Pneumatics Australia