



3D PRINTER

DATE: 2/6/2017
PAGES: 5

FILE NAME: OQD0106004.doc
REVISION : A

TITLE: How to flash the firmware v2.0 to i3plus motherboard and LCD display?

INITIATE BY: Manolo Chen
APPROVED BY: Gary Chen

1.0 Purpose

I3plus firmware need to flash the mother board and LED display separately. This instruction would guide you to flash both of them.

2.0 Scope

This document establishes the specifications required for Duplicator i3plus

3.0 Tools required.

M3 hex wrench, USB A-B cable(inside printer repairing bag), TF card (Micro-SD card) .

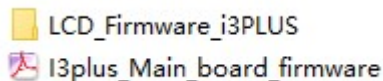
4.0 Flashing motherboard

4.1 Download the firmware.

You can down load the firmware from WANHAO3DPRINTER.COM

4.2 Decompress the file compressed file.

Note: don't change the file name.

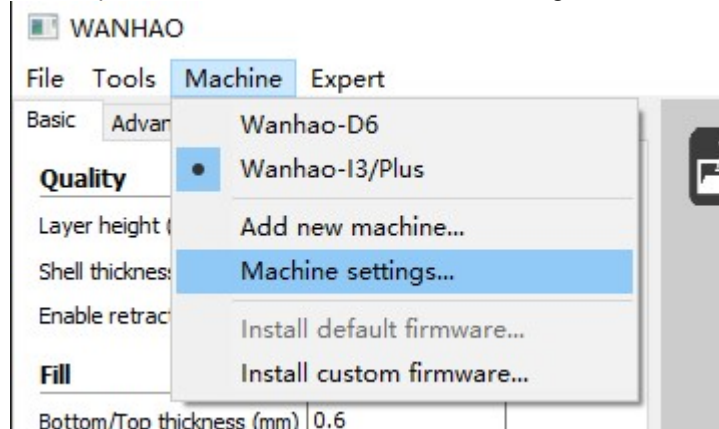


4.3 Update the motherboard firmware.

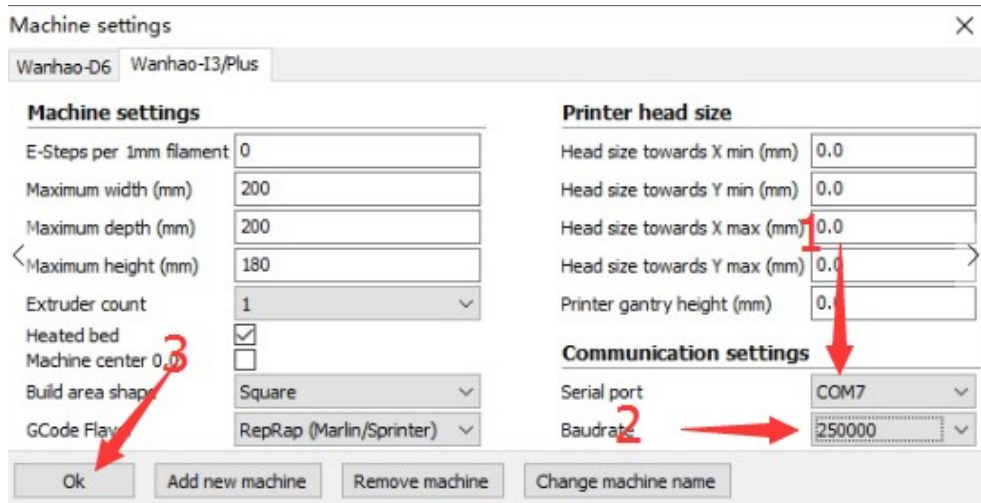
4.3.1 Turn on the printer

Connect the printer with the computer through the USB cable.The computer would install the driver automatically.

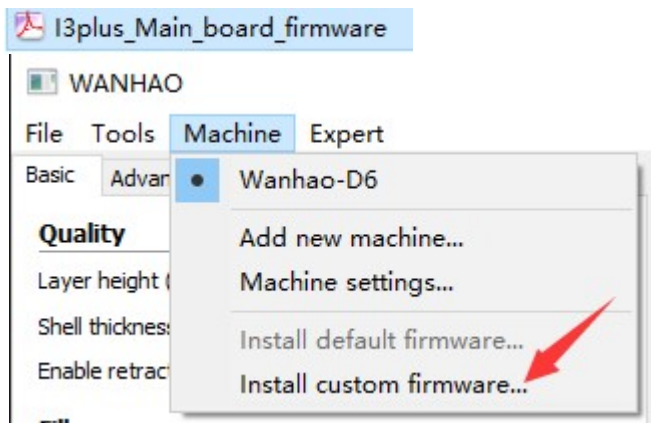
4.3.2 Open CURA---Machine---Machine settings



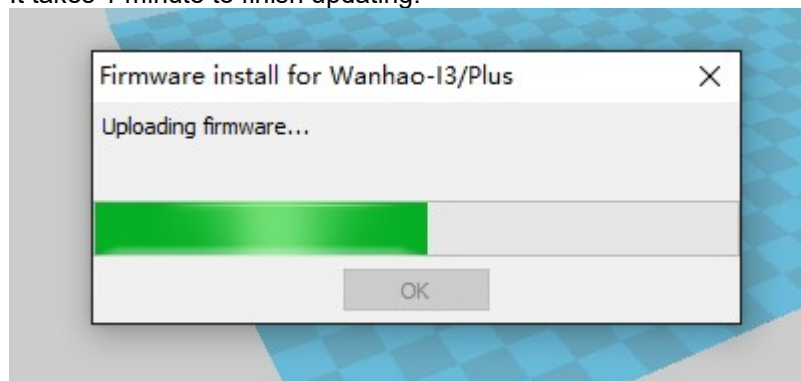
Choose the current Serial port
Choose the baudrate **250000**
Then Press OK



4.3.3 Navigate to Machine—Install custom firmware—I3plus_Main_board_firmware.hex



It takes 1 minute to finish updating.



5.0. Update the LCD display firmware

4.1 Format the TF card(Micro SD card).

Note: file system: FAT32, with 4096 byte



5.2 Copy the all the file to Micro SD card (The screen support Max 8G TF card)

- 27.进度条
- 32.进度条1
- DWIN_SET
- ICON
- image
- TFT
- DWprj.hmi
- DWprj.tft



5.3 Turn off printer and Un-screw the 2 M6 bolt near the screen.



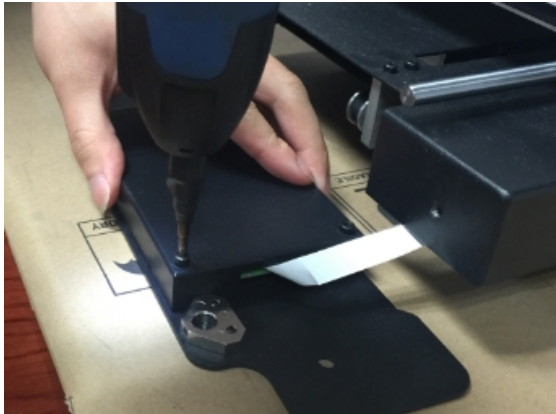
5.4 To loose the 2 M3 set screw by 1.5mm hex wrench.



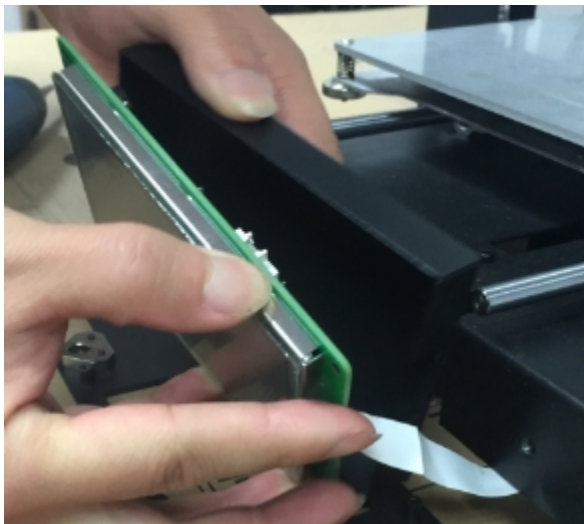
5.5 To dis-assemble the front panel gently.



5.6. To uncover the 4 M3 screws.



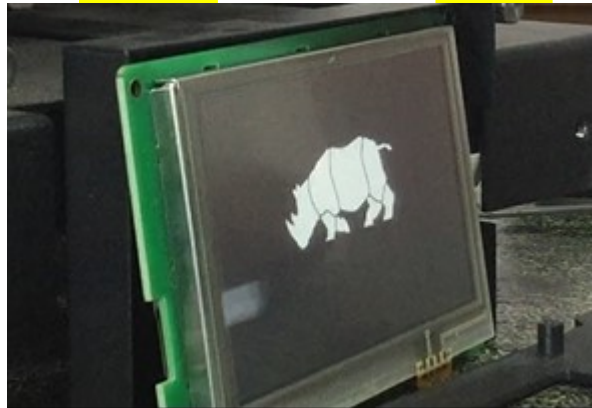
5.7. To move the screen board from the case.



5.8. Insert the micro SD card into the card slot.



5.9. Turn on the printer. The printer would start flashing automatically. It takes 2.5 minutes to flash the LCD board. Then the screen would turn black! **TURN OFF** the printer and **UNPLUG** the micro SD card.



5.10 Re-assembly the front panel vise verse

6.0 Revisions

A – Initiate: 26/6/17 by: Manolo