



# 3D PRINTER

DATE: 5/1/18  
PAGES: 11

FILE NAME: OQD08015.doc  
REVISION : A

TITLE: How to Upgrade kit V.15

INITIATE BY: Mikey  
APPROVED BY: Gary Chen

## 1.0 Purpose

This file details and guide you about upgrading your Duplicator 7 to V1.5

## 2.0 Scope

This document covers Duplicator 7 V

## 3.0 Check list

1- Bearing Block

2-Gantry Cap

3- Coupler

4- Screws

5- Gantry Rail

6- Top Plate

7- Shaft

8- Building Plate

9- Holding plate

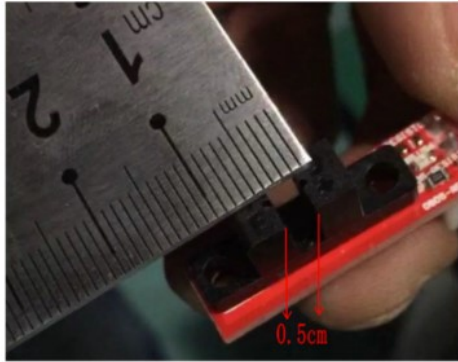
**10- Endstop  
switch is not  
included in this  
pack**



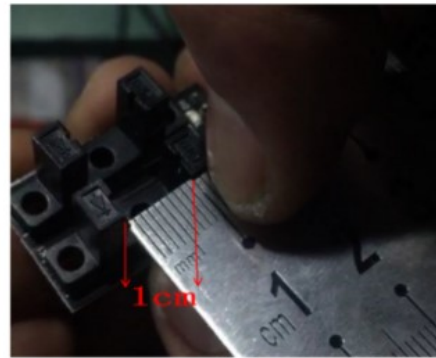
**Important notice(check this first):**

- A. Duplicator V1.1, V1.2 and some of V1.3 used a old version of Endstop switch (Red color with 5mm sensor GAP). Please contact us to put one new 10mm sensor inside pack.
- B. The V1.3 and V1.4 Endstop switch is black with 10mm gap. In this case, the amount hole is correct for your amount hole.

**Old version: Gap 0.5cm**



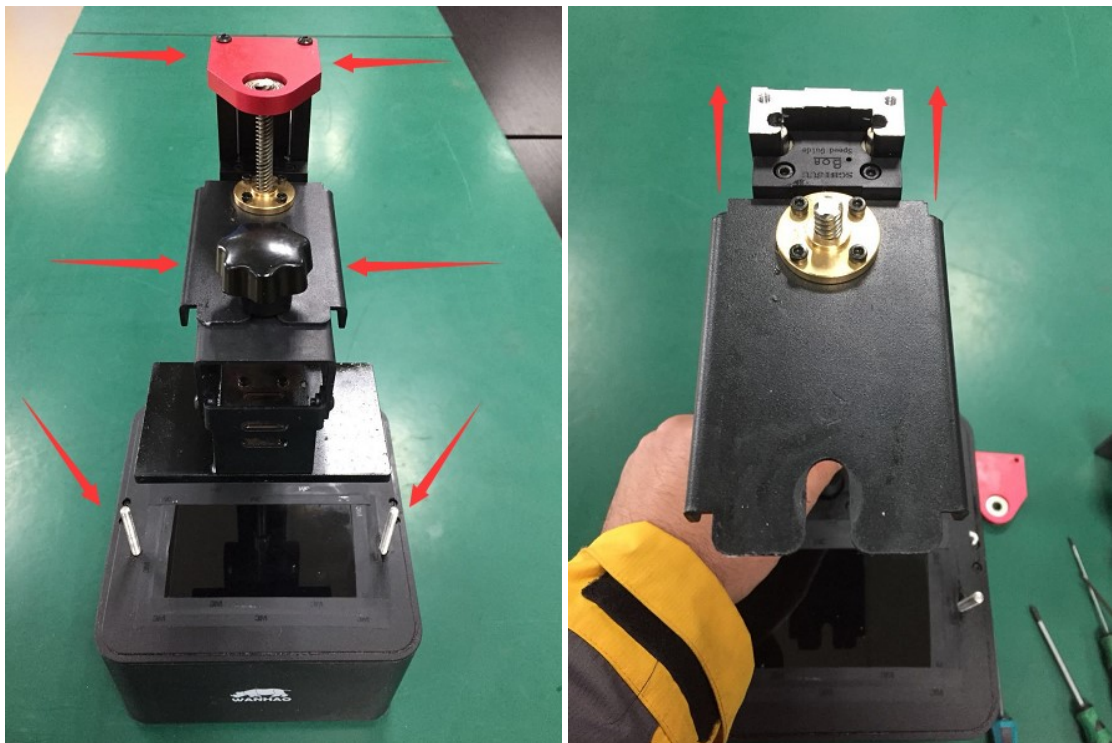
**New Version: Gap 1cm**



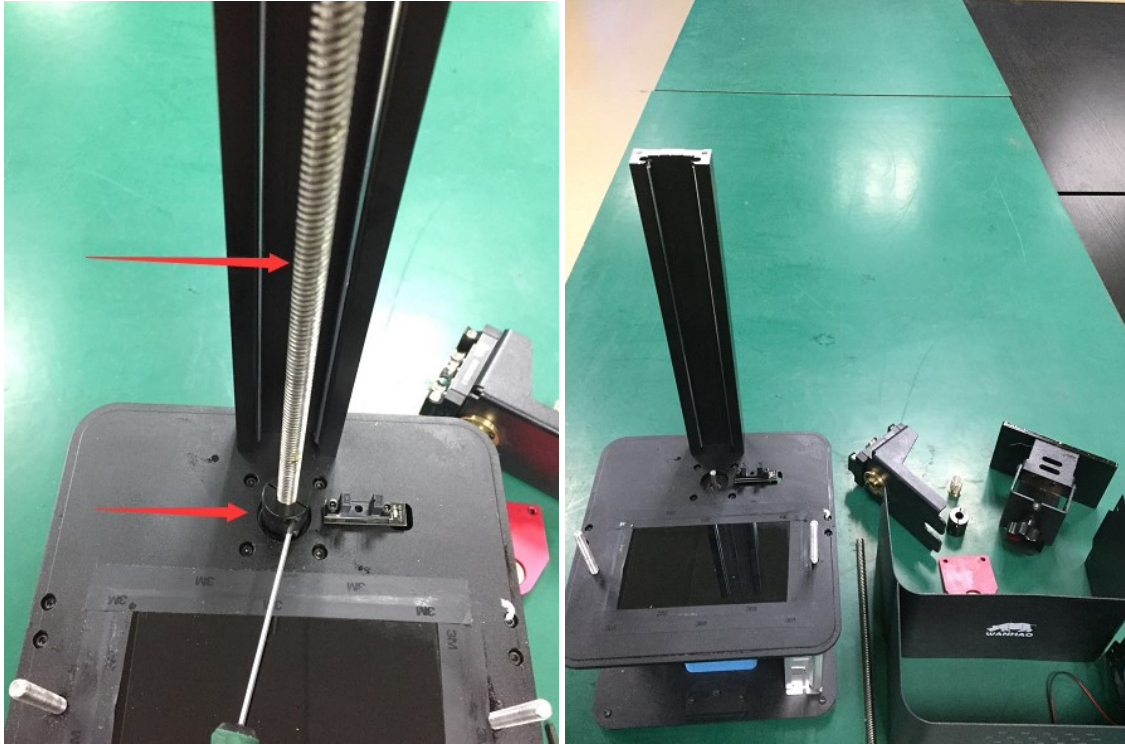
#### 4.0 Disassembling

Open the back and front cover and Remove all the component on the top plate except Gantry rail that has to remove after disassemble after removing the top plate.

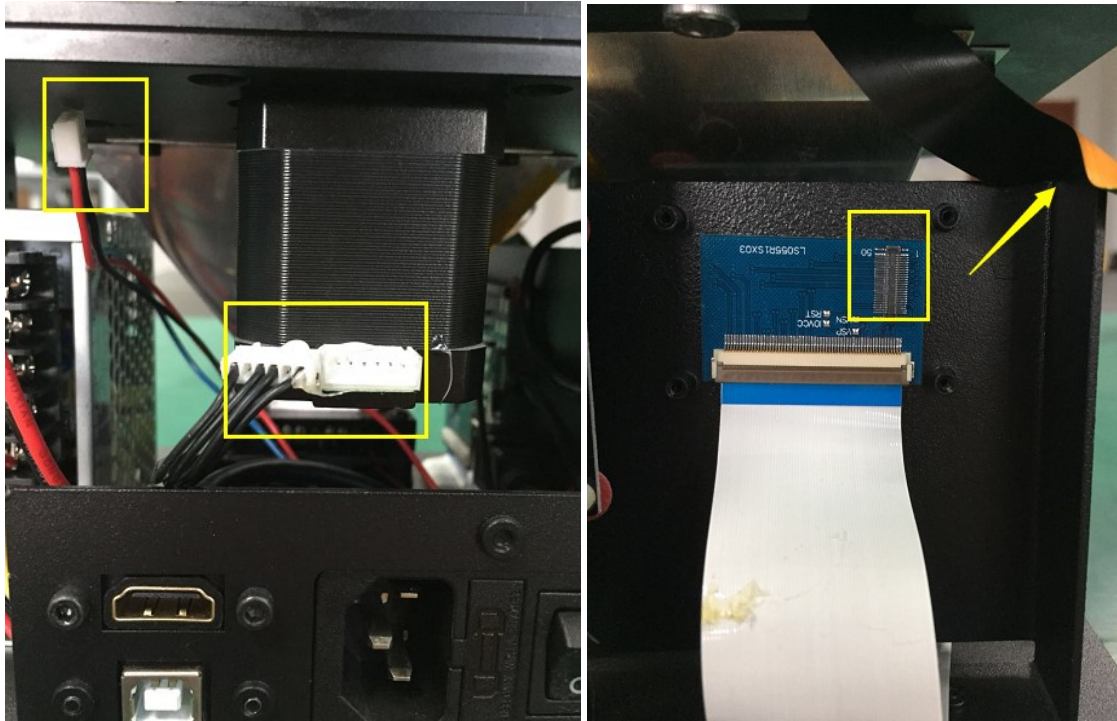
4.1 Vat, Building plate, Gantry cap, Bearing block



4.2 Coupler and Z lead screw

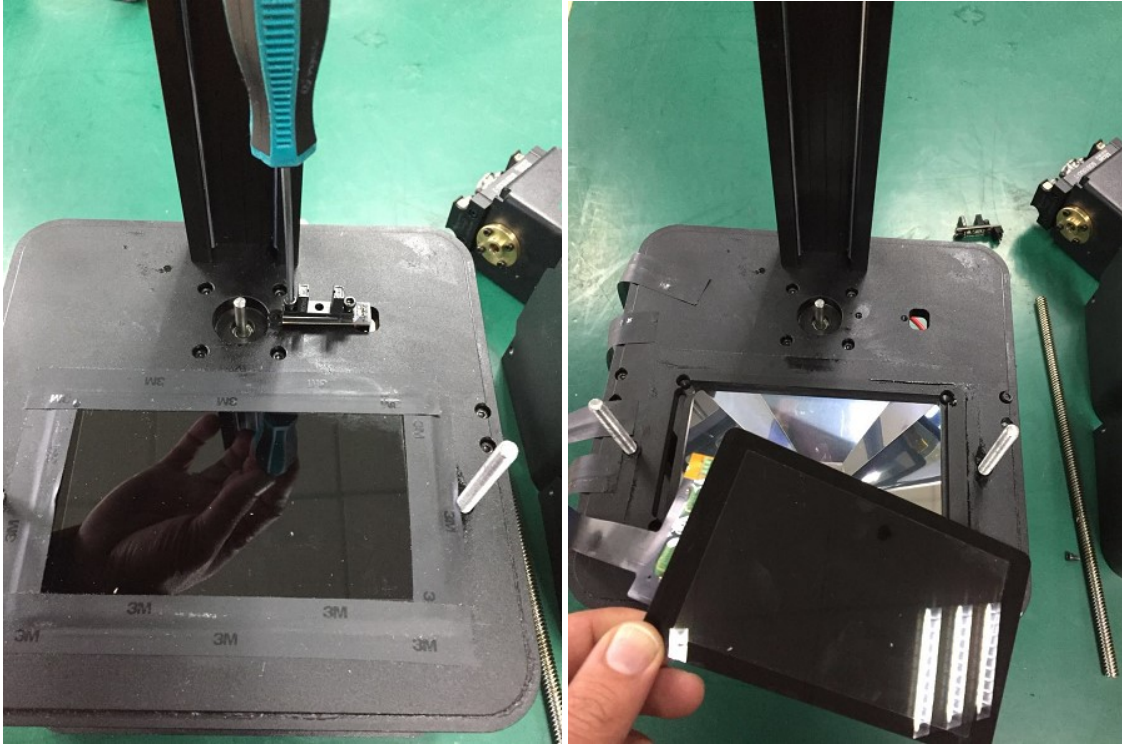


4.3 Before proceed disassembling remove stepper motor cable, Endstop switch and LCD screen Ribbon.

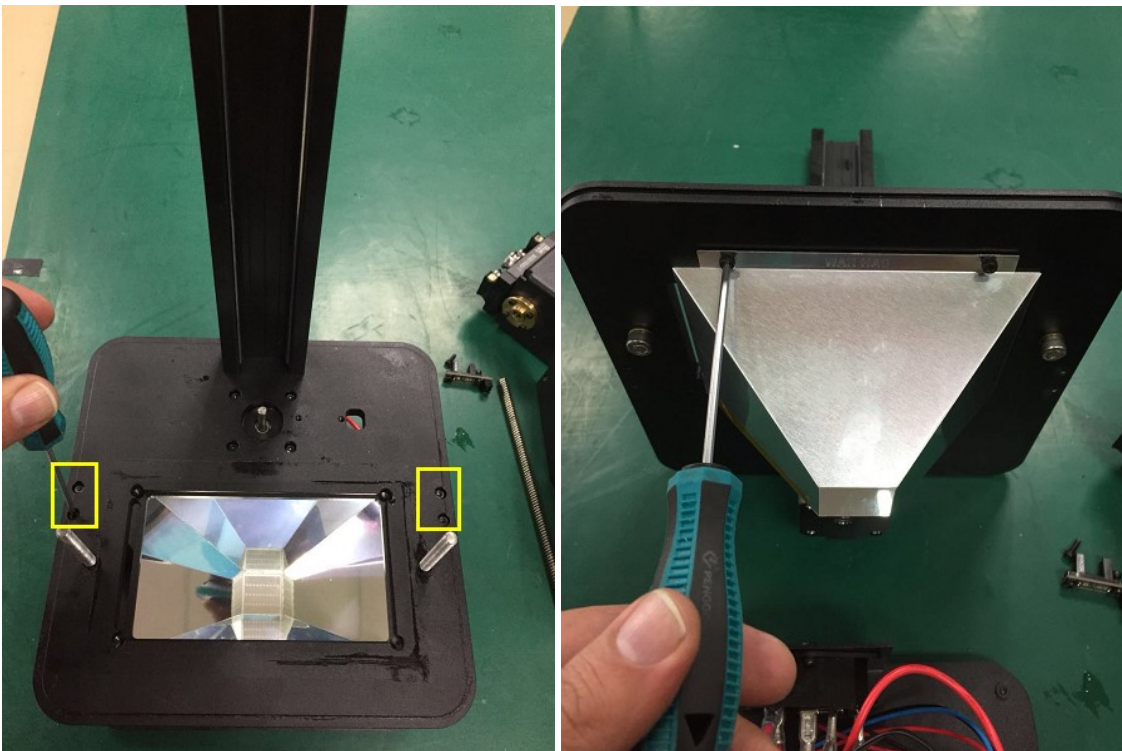




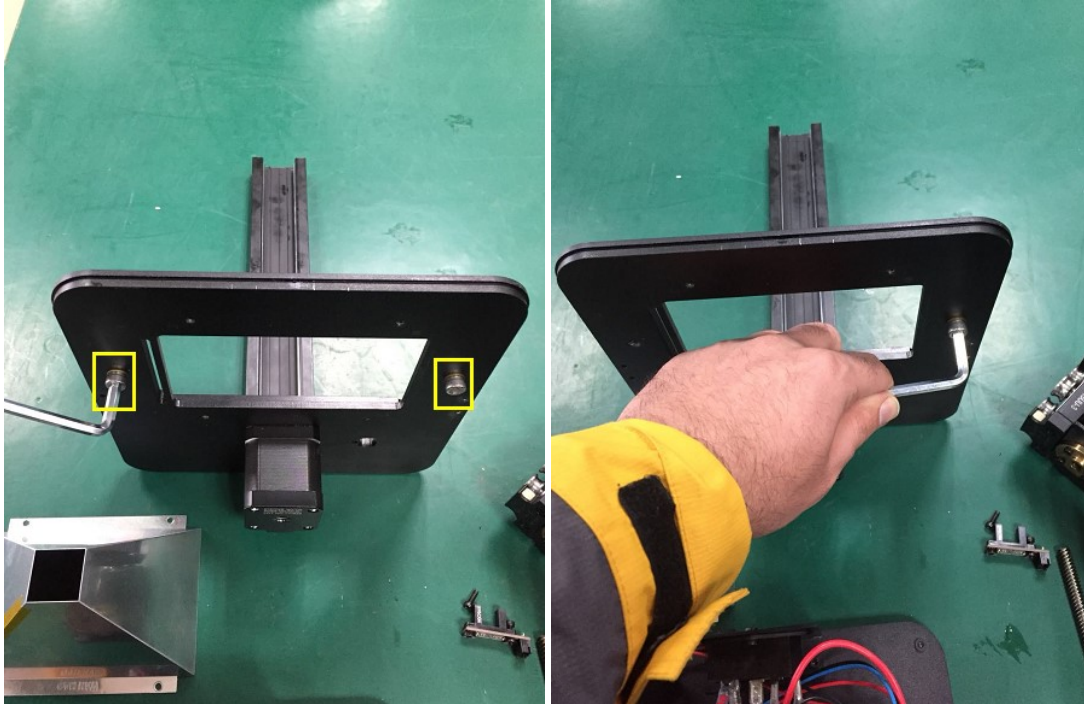
4.4 Remove endstop and very carefully take out the LCD screen without ripping it off.



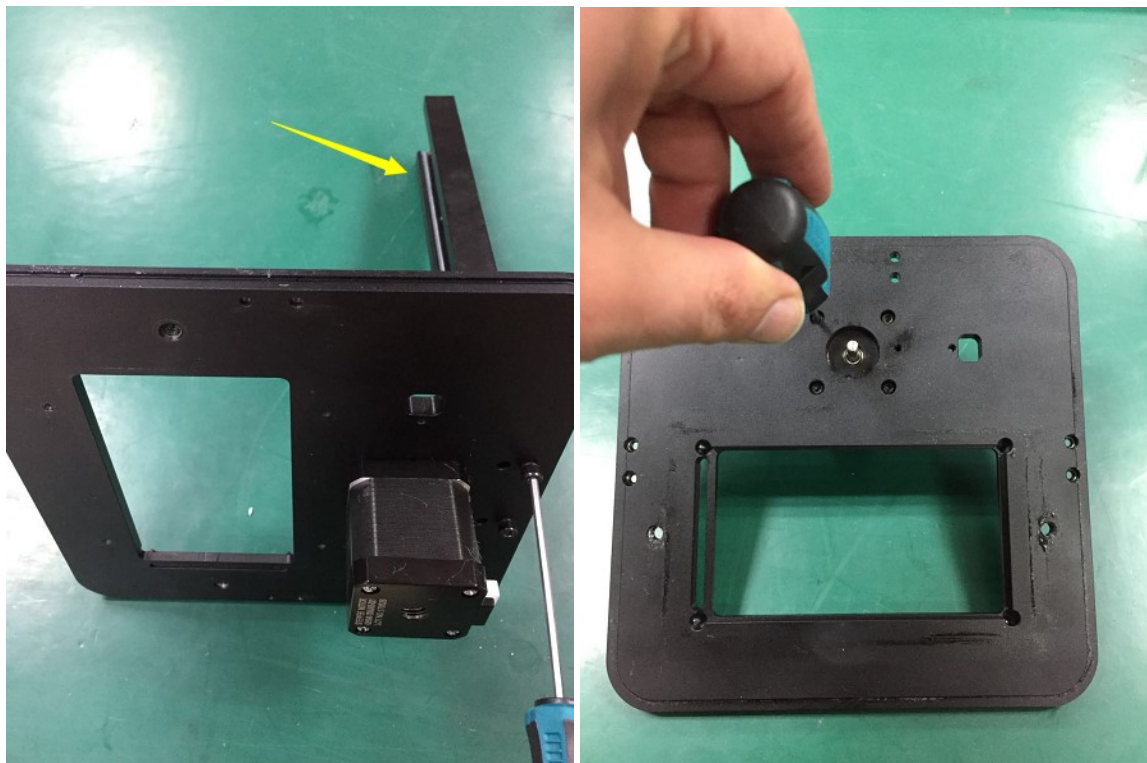
4.5 Unscrew the top plate four screws and remove it .careful with reflector as it is easy to get bend by a little pressure. Remove the reflector by unscrew four bolts.



4.6 Unscrew top plate two bolts which hold printer's vat.

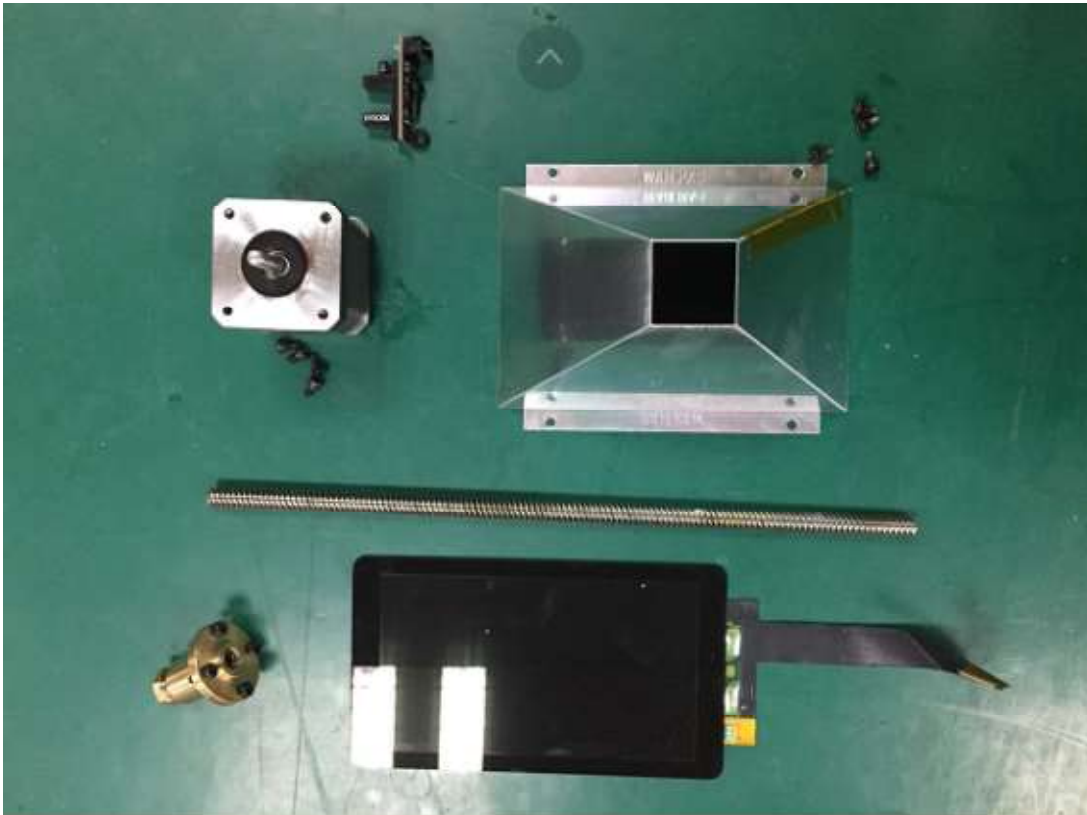


4.7 Unscrew Gantry rail's screws and remove it as well as stepper motor.



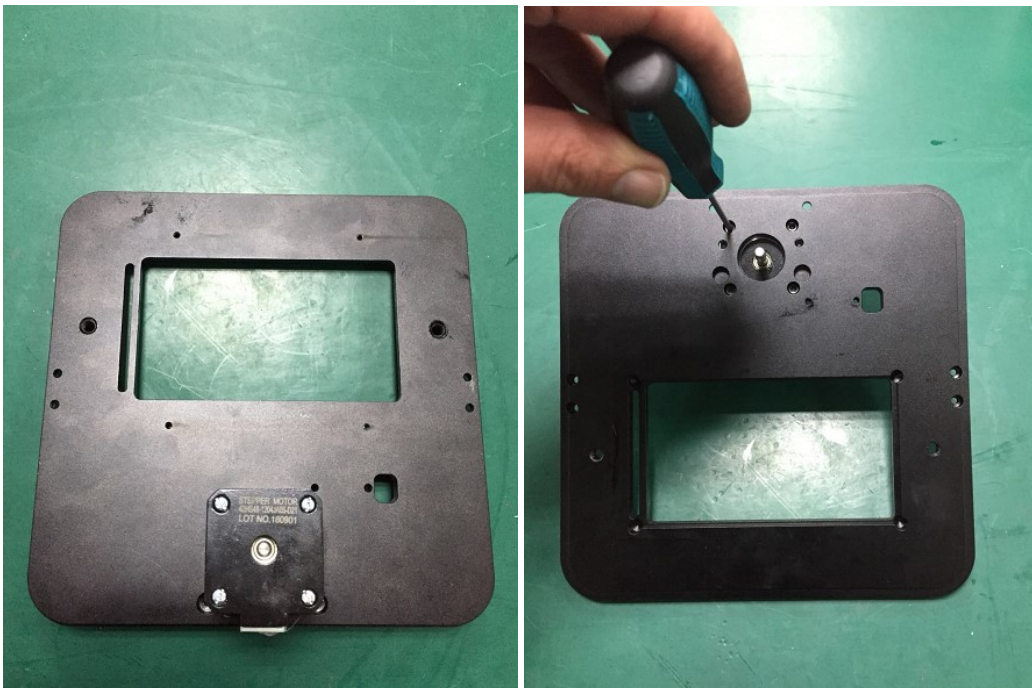


Note: There are the main component of your current printer you need for reassembling.

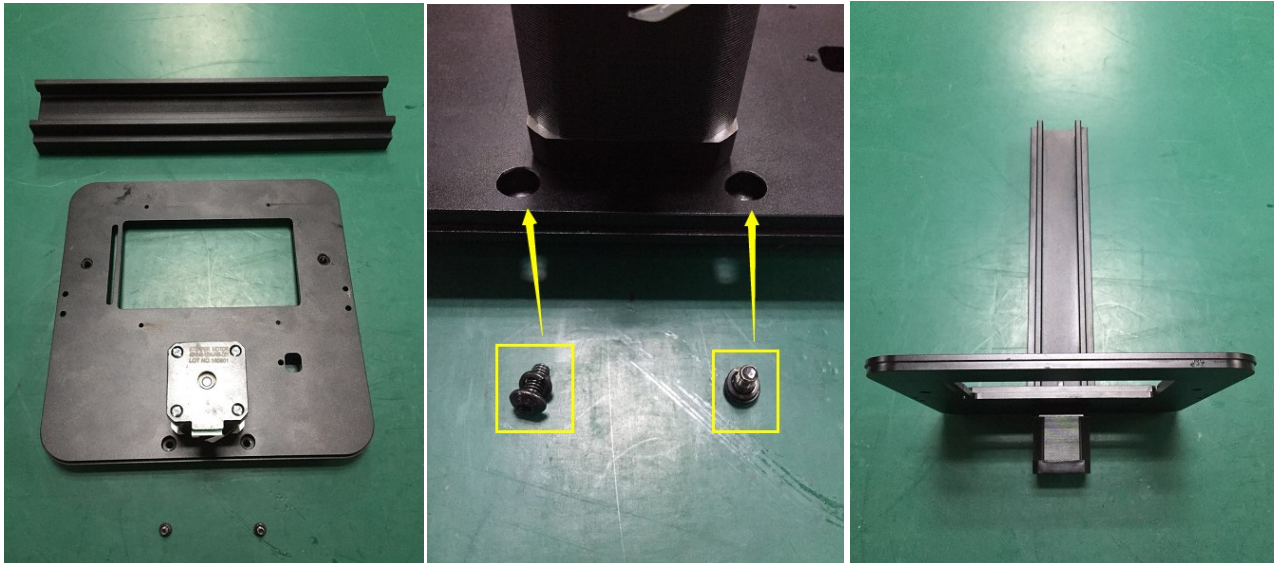


## 5.0 Reassembling

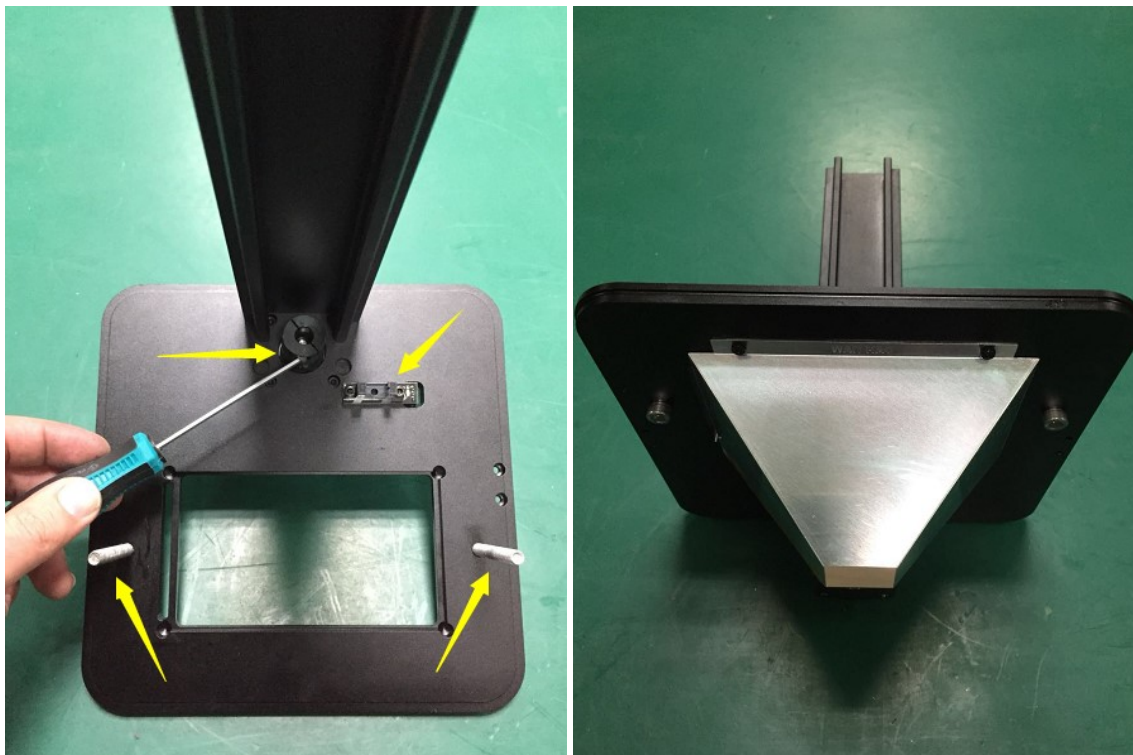
5.1 Assemble the stepper motor on the new plate.



5.2 Assemble the stepper motor on the new plate. Do not forget to put the washers on bolts.



5.3 Put two vat bolt holders, endstop switch on plate and as well as coupler on stepper motor's spindle. Screw back the reflector to the plate.

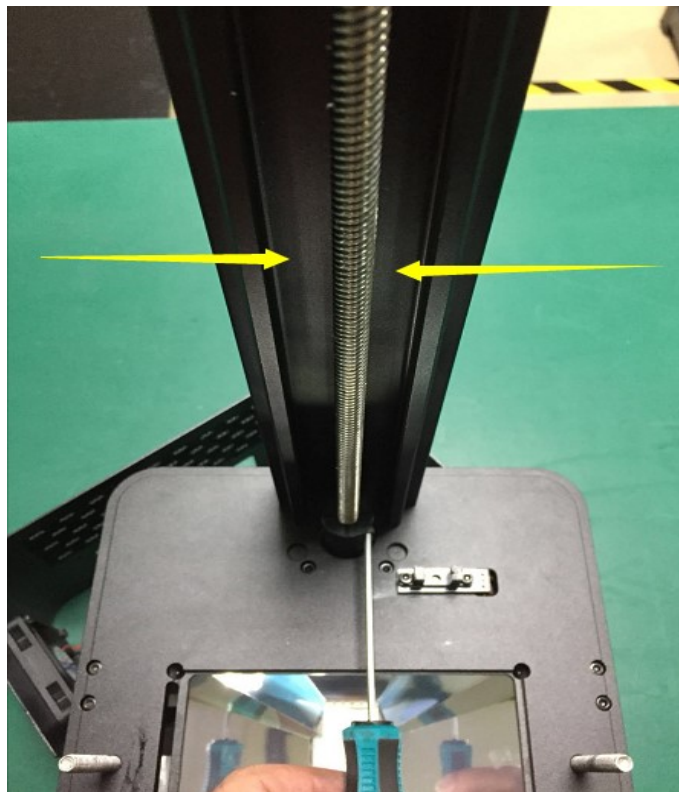




5.4 Put the assembled top on the bottom plate's columns and screw them tightly.

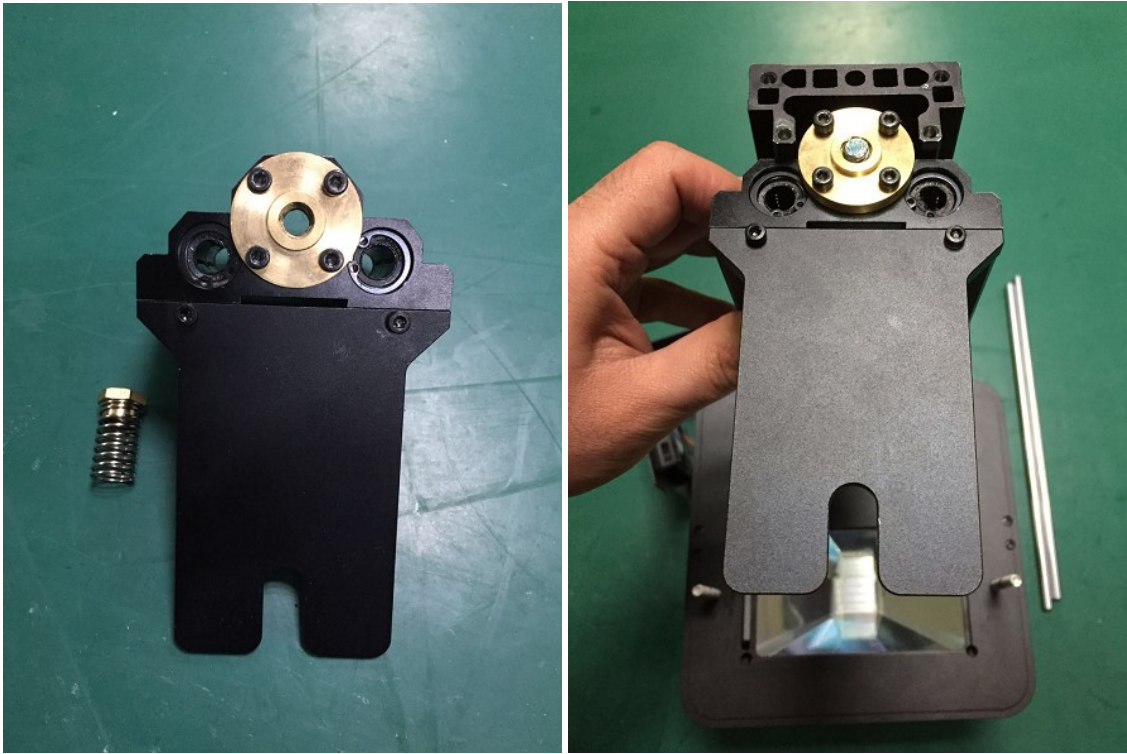


5.5 Put the lead screw into coupler and tighten the bolts.

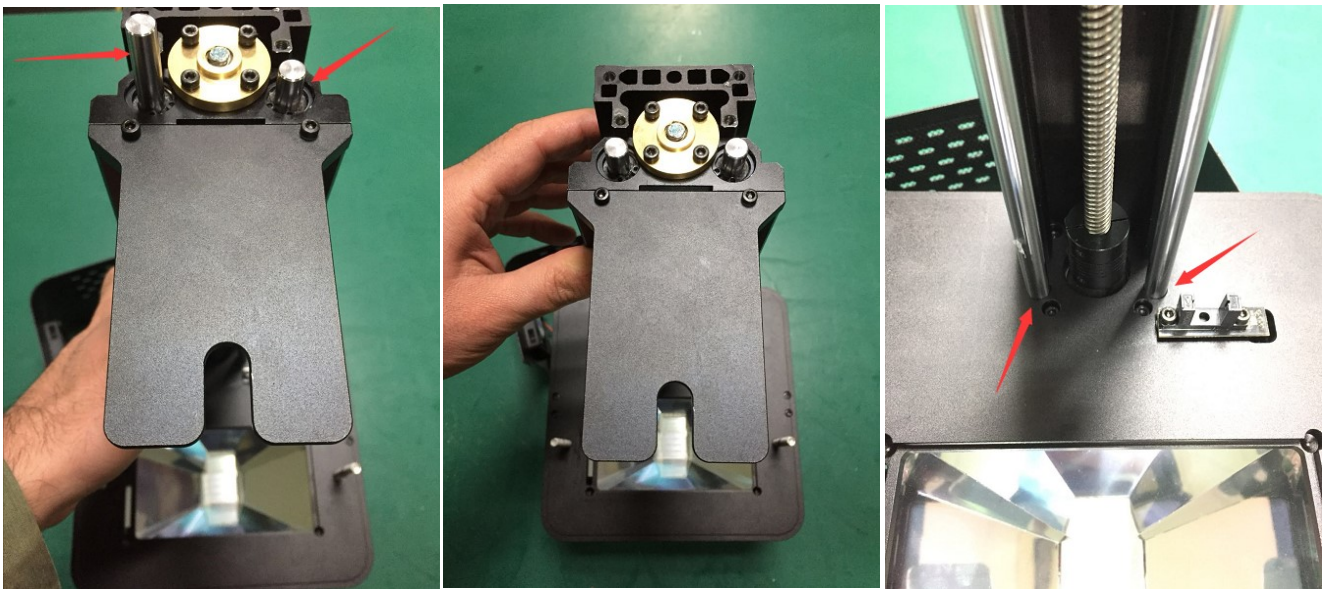




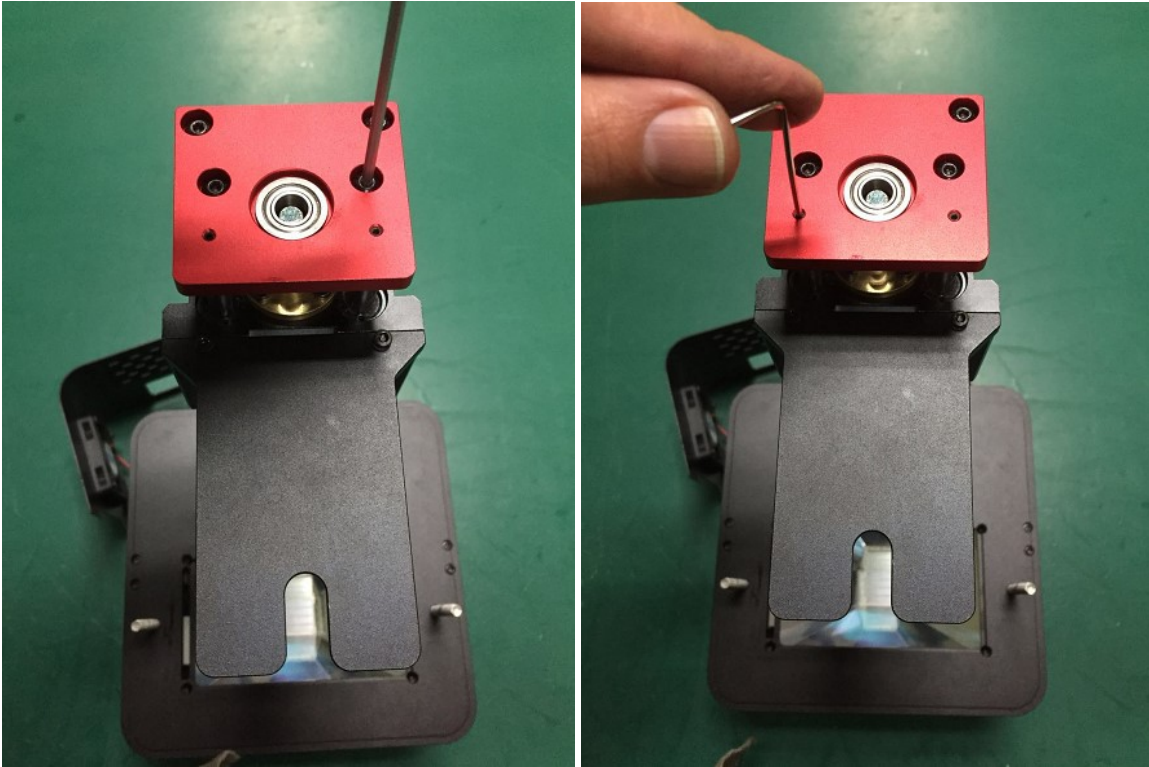
5.6 assemble the gantry holding plate on bearing block as well as Anti-Backlash Nut then put them on Z lead screw and rotate it a little bit to make sure it holds it up. Don't forget to put use Anti-Backlash Nut's spring on Z lead screw.



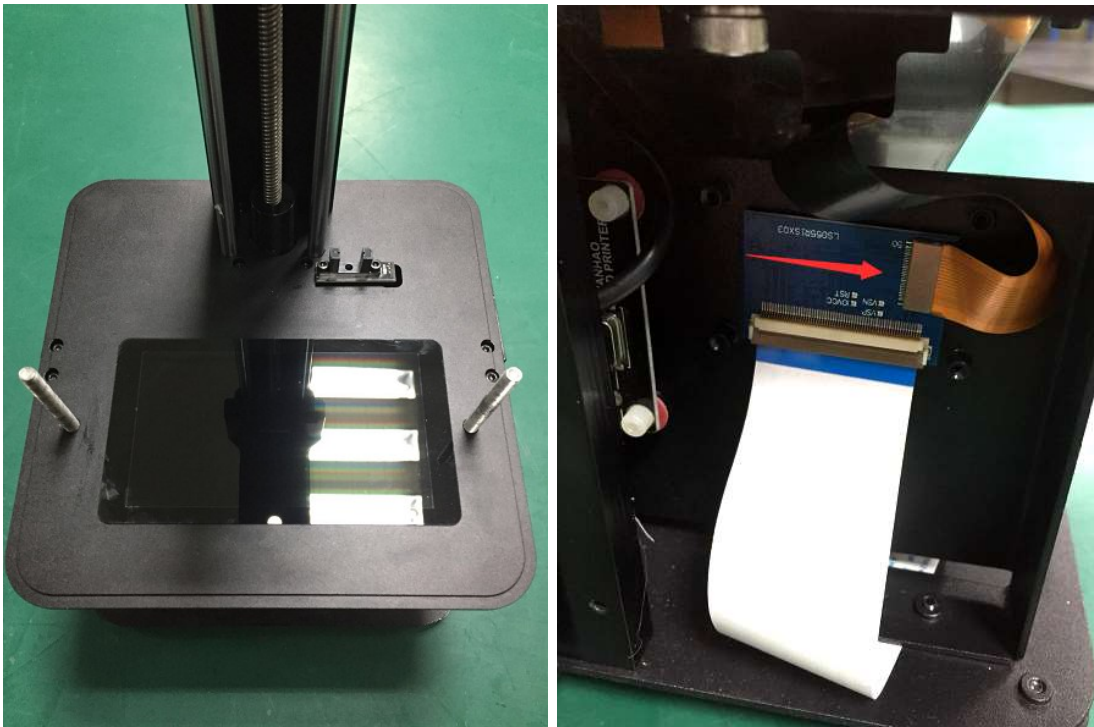
5.7 Insert the two shafts inside bearing block hols and make sure they are placed properly into top plate holes as well..



5.8 Put the gantry cap on the rail and tight the four screws on it as well as two set screws.

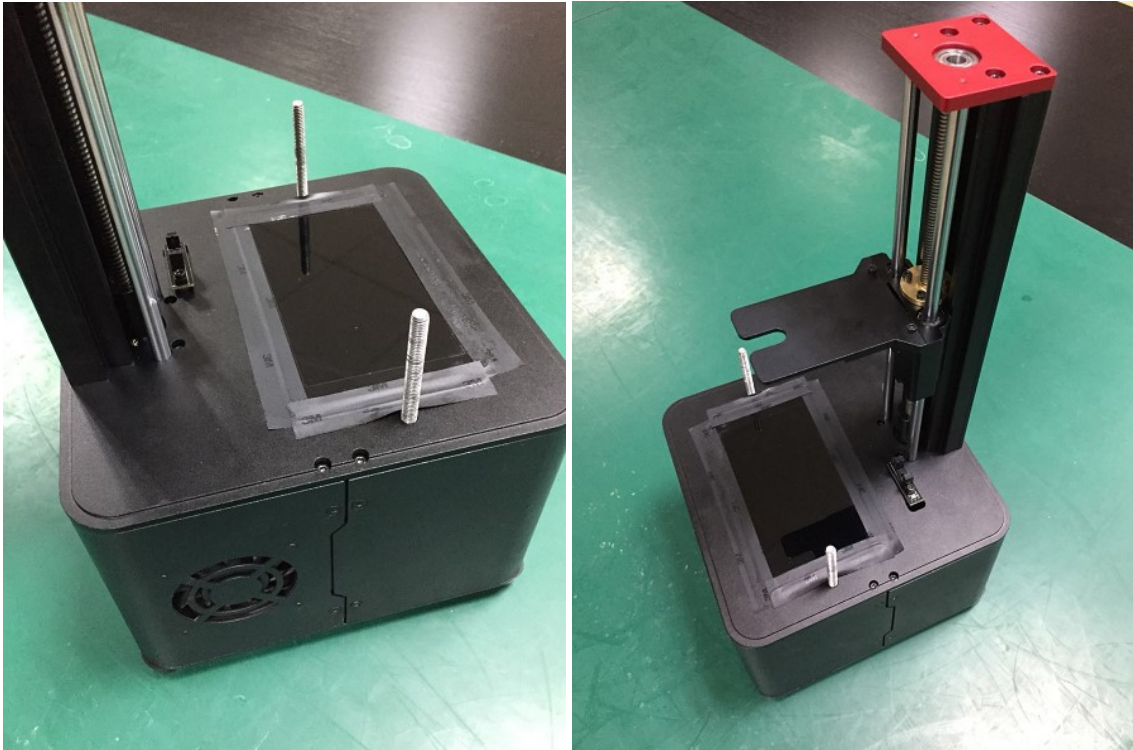


5.9 Put back the LCD screen and use tape to stick it to the plate and plug the LCD screen ribbon on splitter board .





5.10 Screw back the front and back cover of the printer.



**You have upgraded the printer to  
Version 1.5**