

LED Backlit Large Trade Show Counter TDD-TAB-LLED

Installation of the LED backlit counter is done first by assembling the frame, then attaching the graphic print.

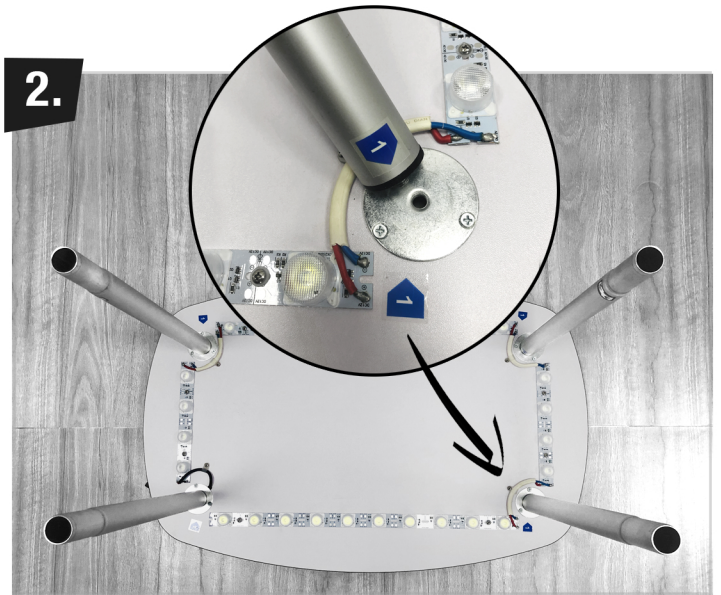
Assembling the counter's frame

1.



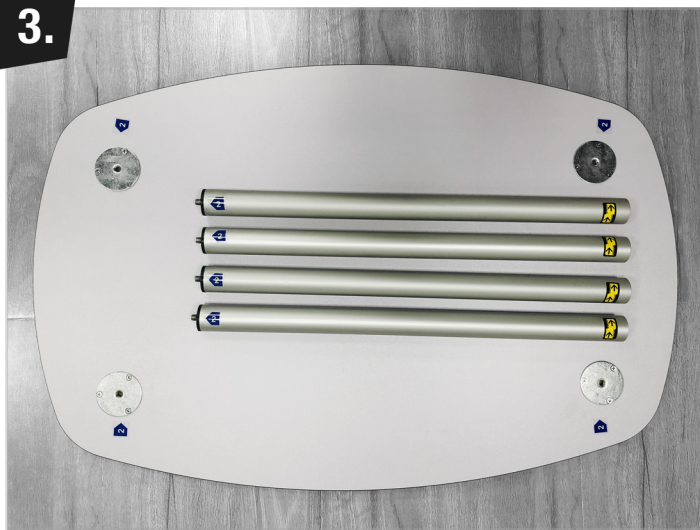
Find the four support poles marked "1" and the base with the LED lights.

2.



Insert and screw in the four "1" poles.

3.



Find the four support poles marked "2" and the table top.

4.



Insert and screw in the four "2" poles.

5.



Turn the table top and its poles upside down, and align the "2" poles onto the "1" poles.

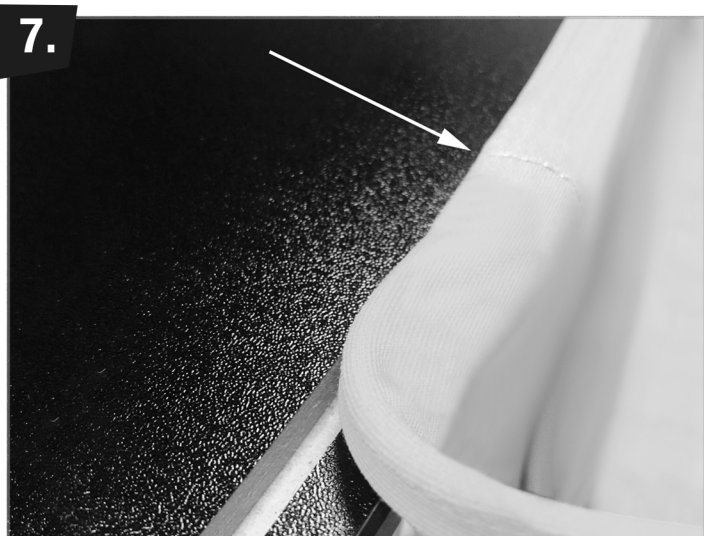
6.



Firmly push the 4 support poles together.

Attaching the graphic print

Unzip the graphic's zipper. Pull-over the graphic over the table top, starting from one side.



Align/rotate the graphic so that the seam nearest the zipper aligns with table top's back-side notch. The back-side notch is closer to the power cord on the base and is away from your customers when installed.



Insert the silicone graphic edge into the groove, going all around the table top. Then turn the table upside down, and do the same for the bottom-side silicone edge.



Set the table upright and plug in the power adapter to the power cord under the base.

Disassembly and storage

Work in reverse order. Ensure that the LED strips are covered with the original protective foam to prevent damage.