

Leading
Lady®

beautiful fit for a beautiful you



MATERNITY TO NURSING LINEBOOK

2018-2019



4044

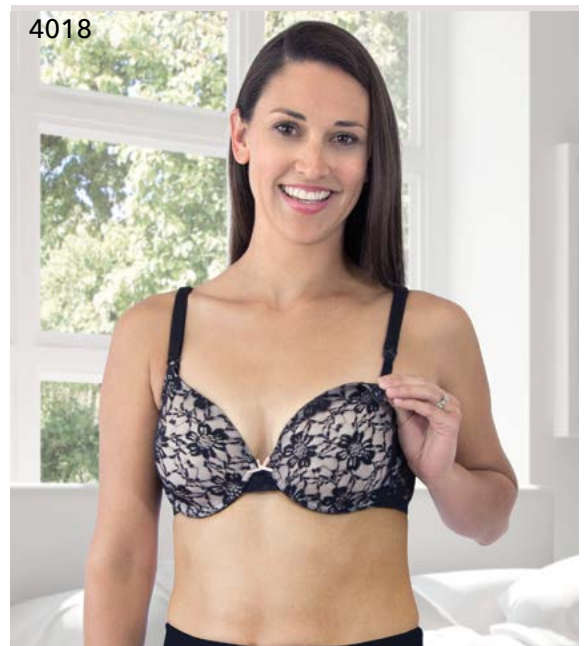
4028 | 4103 | 4056 | 4029



4028



4018



T-SHIRT BRAS

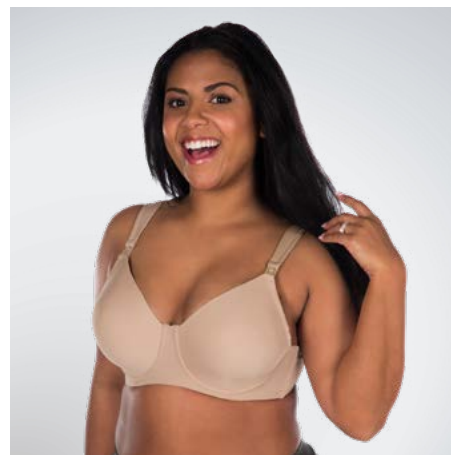
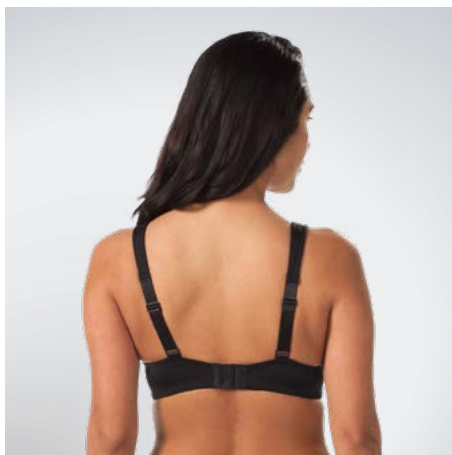
THE CAROLE

wirefree t-shirt bra with cooling fabric

- Perfect comfort full coverage cups with infused cooling technology
- Lightly cushioned comfort straps
- Easy fold-over cups
- Easy one-hand nursing clips
- Wirefree



Style 4057
MSRP \$29.00
Size 34-38 B, 32-40 C, 32-44 D, 32-46 DD/DDD
Colors Black, Warm Taupe



THE PAULETTE

*lace overlay
t-shirt bra*

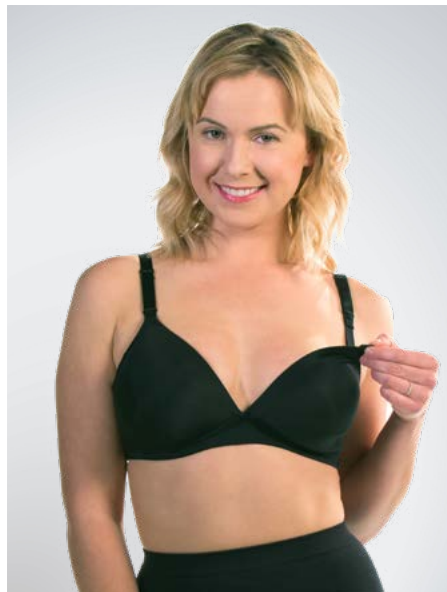


- Elegant lace overlay
- Fold over nursing cups that stay in place
- Easy one hand nursing clasps
- 4 hook back closure & adjustable straps

Style 4018
MSRP \$24.00
Size 34-36 B, 36-38 C, 34-40 D, 34-40DD
Colors Black Lace Over Nude

THE DOROTHY

*dreamy comfort
wirefree bra*

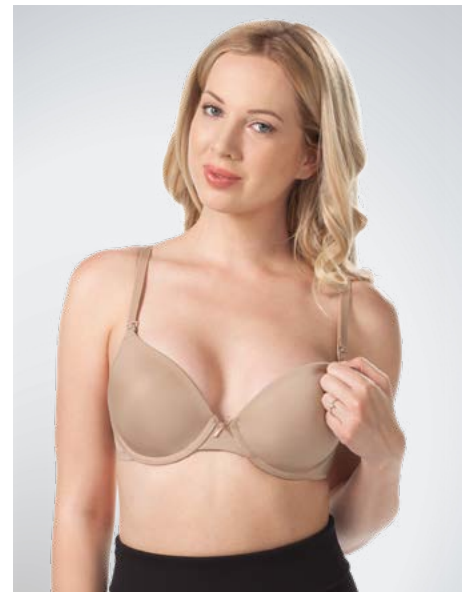


- Smooth, stretchy cups expand with your changing breasts
- Fold down nursing cups for breastfeeding ease
- Reinforced power knit side wings for superior support

Style 4028
MSRP \$26.00
Size 34-38 B, 32-40 C, 32-44 D, 32-46 DD-DDD
Colors Black, Warm Taupe

THE DOROTHY

*dreamy comfort
underwire bra*



- Smooth, stretchy cups expand with your changing breasts
- Fold down cups
- Reinforced power knit side wings for superior support
- Premium underwire support band
- All-day comfort for any occasion

Style 4029
MSRP \$26.00
Size 34-38 B, 32-40 C, 32-44 D, 32-46 DD-DDD
Colors Black, Warm Taupe

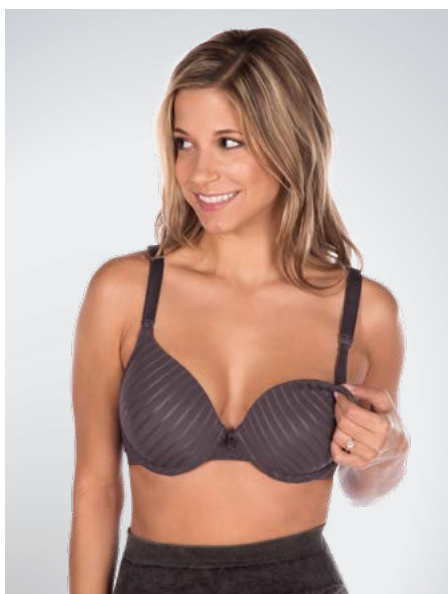
THE CAROLE
*underwire t-shirt bra
with cooling fabric*



- Perfect comfort full coverage cups with infused cooling technology
- Lightly cushioned comfort straps
- Easy fold-over cups
- Easy one-hand nursing clips
- Premium underwire

Style 4056
MSRP \$29.00
Size 34-38 B, 32-40 C, 32-44 D, 32-46 DD-DDD
Colors Black, Warm Taupe

THE MELODY
underwire t-shirt bra



- Fitted underwire for superior lift
- Easy one hand nursing clips
- Easy fold over nursing cups for superior breastfeeding
- Two layer side wings for extra support

Style 4103
MSRP \$26.00
Size 34-38 B, 32-40 C-DD, 32-38 DDD
Colors Black, Lavender Grey

THE HARMONY *seamless crossover nursing bra*

- Soft, breathable dual-layer cotton cups that “lift and separate”
- Crossover design enhances your silhouette
- Extra wide comfort straps and band
- easy pull aside cups for breastfeeding
- Great for maternity and nursing



Style 4011
MSRP \$27.00
Size S-4XL
Colors Jet Black, Naturally Nude



THE FELICITY
2pk cotton sleep bra



- Lightweight, breathable and cool cotton-blend fabric
- Gentle support for breastfeeding relief
- Easy pull-aside nursing
- Extra wide comfort straps
- Perfect for at-home sleep or leisure

Style 4024
MSRP \$24.00
Size S-2XL
Colors Black, Heather Grey, Pink Leopard

THE SERENITY
2pk bamboo sleep bra



- Lightweight, breathable and cool bamboo-blend fabric
- Gentle support for breastfeeding relief
- Easy pull-aside nursing
- Extra wide comfort strap

Style 4502
MSRP \$28
Size M-2XL
Colors Black, Heather Grey

THE DEANNA
racerback sleep bra



- Soft breathable cotton
- Stylish racerback design
- Gentle support for breastfeeding relief
- Easy pull-aside nursing
- Extra wide comfort straps
- Perfect for at-home sleep & leisure

Style 4010
MSRP \$18.00
Size M-2XL
Colors Black with Pink

*New-Shipping

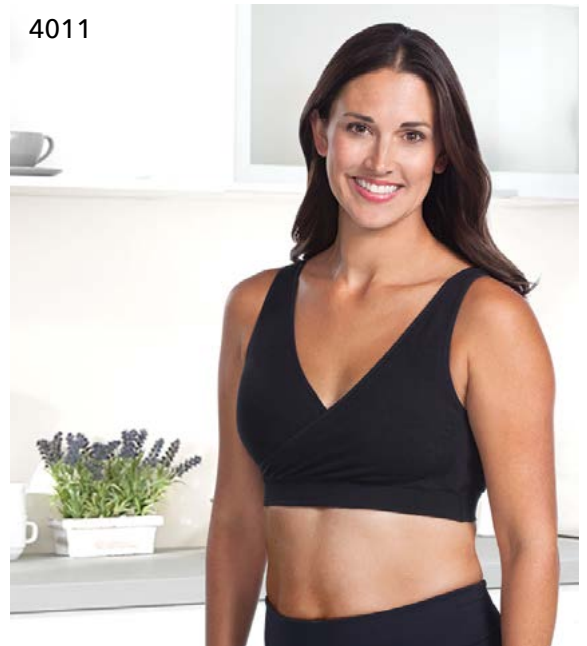
4020 | 4700 | 4023 | 4022



4023



4011



SEAMLESS COLLECTION

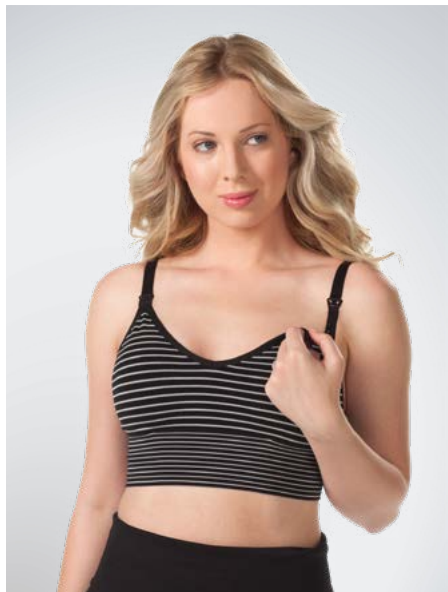
THE JANET
seamless wirefree bra



- Soft, flexible fabric that shapes and supports
- Seamless styling for comfort
- Back opening and adjustable straps
- Inner sling for support

Style 477
MSRP \$34.00
Size M-2XL
Colors Black, Nude, White

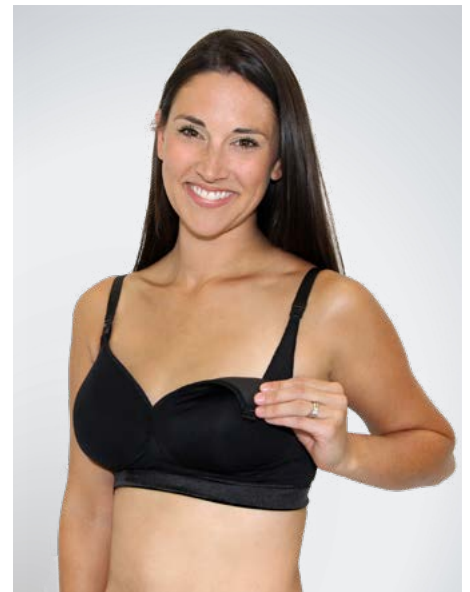
THE DANIKA
seamless nursing sport bra



- Lightweight breathable cotton fabric for enhanced comfort
- Extra wide comfort band for superior support
- Soft inner cotton slings
- Dual fold-down cups for easy breastfeeding and pumping

Style 4020
MSRP \$28.00
Size S-4XL
Colors Jet Black with Hot Pink & Black with Grey Stripes

THE GLORIA
hybrid seamless t-shirt bra



- Soft lined cups for comfort
- Leotard back for better lift, fit, and posture
- Silky comfort band with inner support mesh
- Easy one-hand nursing clips and inner half slings

Style 4030
MSRP \$19.00
Size 32-38 C, 32-36 D, 34 DDD
Colors Black, Nude

LUXE BODY *seamless maternity jegging*

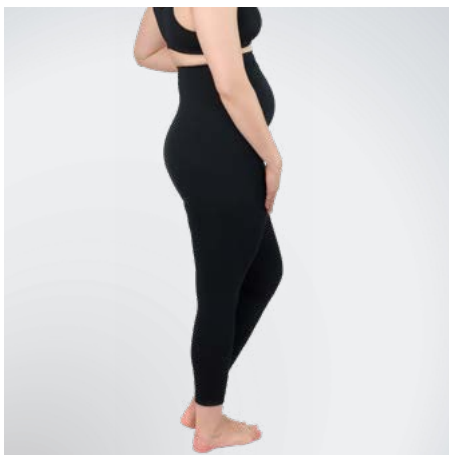


- Built in maternity support band
- Conforms to the body for 360 degree support
- Expandable belly zone grows with baby
- Helps prevent back pain
- Soft durable cotton



Style 4700
MSRP \$30.00
Size S-2XL
Colors Black, Grey Denim Wash

Patented Design



MATERNITY LEGGING



- Built in maternity support band
- Conforms to the body for 360 degree support
- Expandable belly zone grows with baby
- Helps prevent back pain
- Soft durable cotton

Style 4022
MSRP \$29.00
Size S-XL
Colors Black

Patented Design

MATERNITY FULL SUPPORT BAND



- Seamless knit with woven support zones to improve your posture
- Helps with back pain
- Adjusts to changing body
- Full panel maternity one
- Comfortable maternity solution for expecting moms

Style 4081
MSRP \$18.00
Size M-2XL
Colors Jet Black

Patented Design

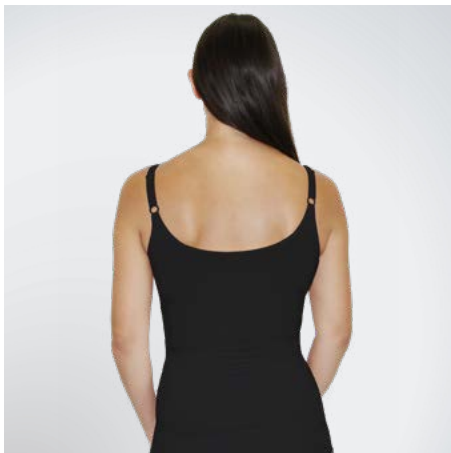


SHAPEWEAR CAMI

- Complete all-around shaping
- Use as everyday shapewear or for postpartum control
- Easy pull-aside nursing cups
- Medium seamless support flattens your tummy
- Wear discreetly under clothing



Style 4014
MSRP \$25.00
Size M-2XL
Colors Blush, Jet Black and Naturally Nude



SHAPEWEAR BOYSHORT



- Reclaim your pre-baby shape
- Firm dual layered seamless support band
- Slims and smooths, flatten your tummy and love handles
- Extra control for all-around shaping

Style 4015
MSRP \$16.00
Size M-2XL
Colors Jet Black, Naturally Nude

SHAPEWEAR BRIEF



- Reclaim your pre-baby shape
- Firm dual layered seamless support band
- Slims and smooths, flatten your tummy and love handles
- Extra control for all-around shaping

Style 4016
MSRP \$16.00
Size M-2XL
Colors Jet Black, Naturally Nude

4054 | 4059 | 4053 | 4001



4054



4001



EVERYDAY NURSING BRAS

THE UMA
wirefree nursing bra
2 pk



- Cotton, spandex blend
- Double layered cups
- Quick one-handed nursing clasp
- Full inner sling
- Back hook and eye closure
- Adjustable straps

Style 4001
MSRP \$39.00
Size 34-38 B, 34-44 C, 36-44 D-DDD
Colors Black/Heather Gray Stripe & White; Black/Heather Gray Stripe & Black; Black & White

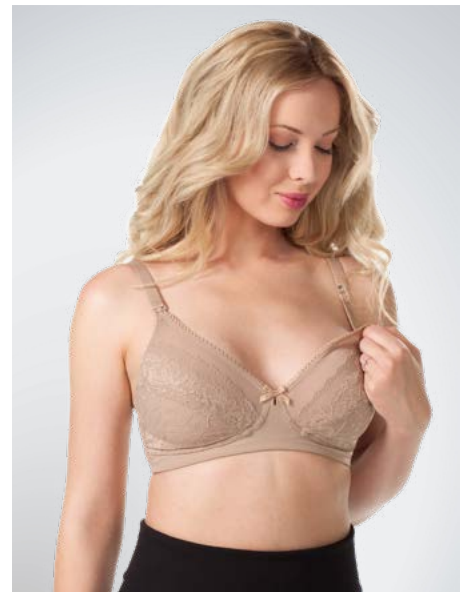
THE MONROE
lace underwire bra



- Delicate lace full coverage cups
- Easy one hand nursing clips
- Inner cotton half slings
- Easy to use with nursing pads
- Fitted underwire for superior lift

Style 4053
MSRP \$32.00
Size 34-38 B, 32-40 C, 32-44 D, 32-46 DD, 32-46 DDD
Colors Warm Taupe, Black

THE RUBY
lace wirefree bra



- Delicate lace full coverage cups
- Dual-layer side wings for extra support
- One-hand nursing clasps
- Leotard back for improved posture and shaping

Style 4054
MSRP \$32.00
Size 34-38 B, 32-40 C, 32-44 D, 32-46 DD, 32-46 DDD
Colors Warm Taupe, Black

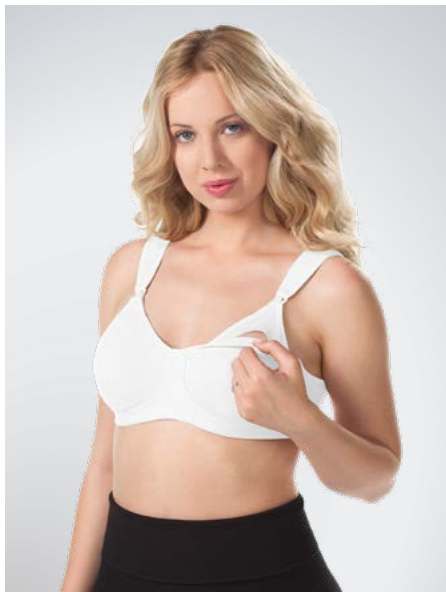
THE NATALIE
sport wirefree bra



- Soft breathable cotton
- Lightly padded cups
- Elastic wirefree band
- One hand nursing clasps with easy fold down cups
- Cushioned wide straps
- For low impact and leisure

Style 4059
MSRP \$26.00
Size 36-46 B-DDD
Colors Black, Warm Taupe

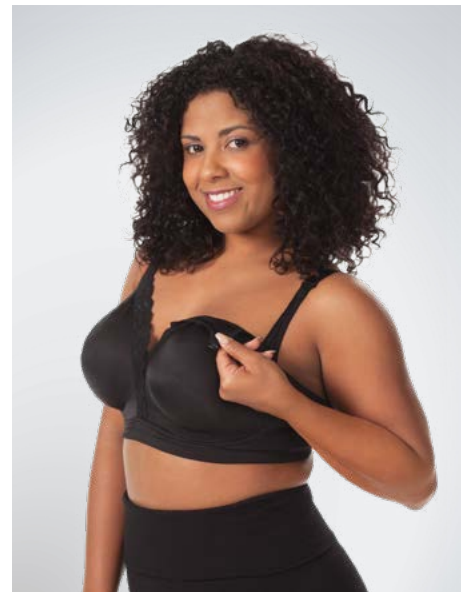
THE VIVIEN
sport wirefree bra



- Lightly padded cups for a flattering shape
- Extremely versatile and supportive
- Great for low impact activities
- Comfortable elastic wirefree band
- Quick one hand nursing clasps
- Soft breathable cotton

Style 4388
MSRP \$26.00
Size 36-46 B-DD & 38-46 DDD
Colors Black, Grey, White

THE VERONICA
silky lace bra



- Silky comfort fabric soft against baby's skin
- Delicate lace neckline
- Two layer power knit side wings for extra support
- Great breastfeeding basic
- Inner cotton slings

Style 4006
MSRP \$27.00
Size 34-4 B, 34-44 C, 36-44 DDD
Colors Black, Nude, White

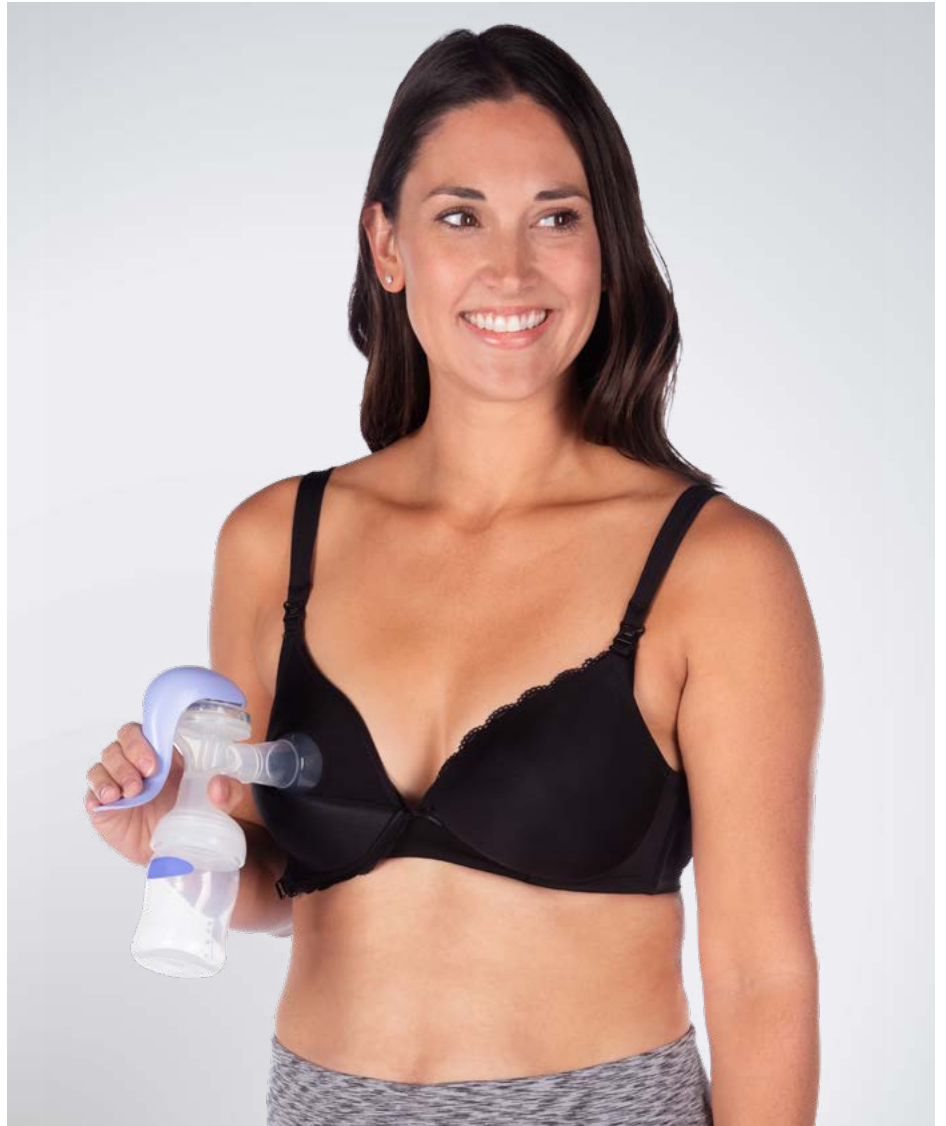
THE CHRISSY

*wirefree nursing
& pump bra*

- Silky microfiber with lace trim
- 2 in 1 combo: nursing and breast pump bra
- Hands free breast pumping
- Easy one-hand nursing clasp
- Comfort straps
- Soft cotton inner sling
- Patent Pending



Style 4034
MSRP \$35.00
Size 34-36 B, 34-40 C-DD
Colors Black, Warm Taupe



4049



4023



4025 | 720 | 4023 | 4049



NURSING CAMI

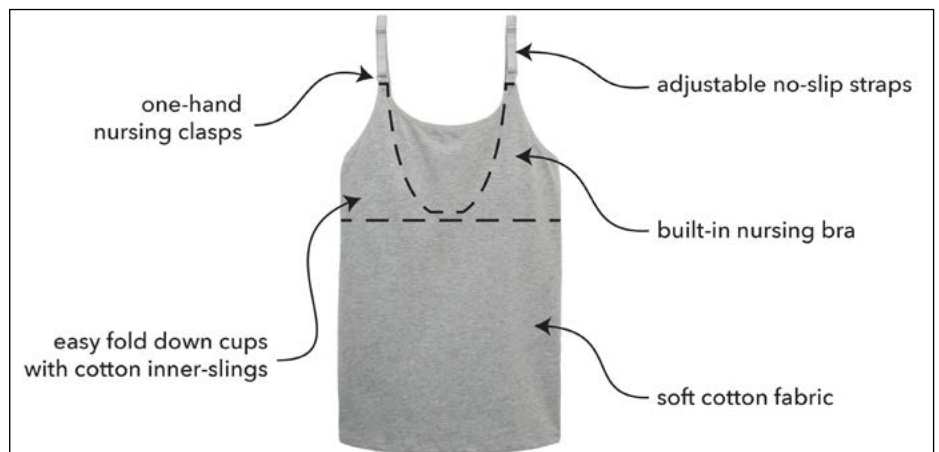
NURSING CAMI WITH BUILT-IN BRA



- Soft breathable cotton
- Internal shelf bra
- Easy one-hand nursing clasp
- Full inner sling
- Wirefree shelf bra
- Adjustable straps
- Quick drop down cups



Style 4025
MSRP \$28.00
Size S-2XL
Colors Black, Grey, White



NURSING CAMI WITH LACE BACK



- Fashionable lace racerback
- Quick drop down cups
- Extra soft cotton fabric
- Easy one hand nursing clasps
- Wirefree shelf bra
- Empire waist line
- Adjustable straps

Style 4049
MSRP \$30.00
Size S-2XL
Colors Black, Cloud Blue, Dove Grey and Azalea

SHIRRED FRONT CAMI



- Soft breathable cotton
- Easy one-hand nursing clasp
- Full inner sling
- Wirefree shelf bra
- Quick drop down cups
- Adjustable straps
- Empire Waist

Style 4031
MSRP \$34.00
Size S-2XL
Colors Black with Tan Dot

SEAMLESS NURSING CAMI



- Gentle double layer built-in bra support with dual drop-down cups
- Soft cotton/spandex fabric
- Stretchy enough to adjust to your changing shape
- Easy one-hand nursing clasps
- Great for maternity to nursing

Style 4023
MSRP \$30.00
Size S-4XL
Colors Naturally Nude, Jet Black, Jet Black and Stripes

EMPIRE WAIST CAMI



- Soft breathable cotton
- Internal shelf bra
- One-hand nursing clasp
- Full inner sling
- Stylish square neck design
- Quick drop down cups

Style 4044
 MSRP \$34.00
 Size S-2XL
 Colors Denim Blue Stripe, Black Stripe, Black, Azalea

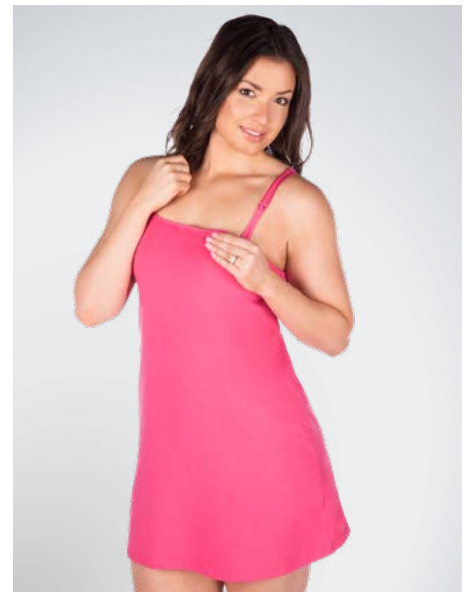
NURSING CHEMISE



- Shirred-front
- Wirefree Nursing Chemise
- Soft breathable cotton
- Internal shelf bra
- Empire waist
- Quick drop down cups
- One-hand nursing clasp

Style 4041
 MSRP \$36.00
 Size S-2XL
 Colors Black with Tan Dot

NURSING CHEMISE



- Stylish, nursing chemise
- Built-in nursing bra
- One-hand nursing clasp
- Soft, breathable, cotton fabric, perfect for maternity to nursing
- Quick drop down cups

Style 4699
 MSRP \$34.00
 Size S-2XL
 Colors Black, Azalea

6 OR 12 PACK NURSING PADS



- Extra absorbent
- Washable and Reusable
- Fits perfectly beneath nursing bra or top
- Easily store in purse or diaper bag
- Contoured shape fits all breast shapes and sizes

Style 4106/4112
MSRP \$9.98/\$18.98
Size One Size Fits All
Colors White

MATERNITY BELT



- First tummy band provides gentle support for baby and back
- Extra tummy band provide complete adjustability
- May be worn discreetly under your clothing
- Extra soft against skin

Style 4026
MSRP \$30.00
Size S,M/L,XL/2XL,3XL/4XL
Colors Black

NURSING COVER



- Nursing cover easily converts to nursing scarf
- Breastfeeding and pumping privacy and comfort
- Slightly sheered & Breathable
- Compact and lightweight design

Style 40000
MSRP \$16.00
Size One Size Fits All
Colors Leopard, Black, Blackberry Wine, Pebble, & Zebra

ALPHA SIZE CHARTS

4011

	A	B	C	D	DD	F	G
32	S	S	S	M	L	XL	3XL
34	S	M	M	L	XL	2XL	3XL
36	M	M	L	XL	2XL	3XL	3XL
38	L	L	XL	XL	2XL	3XL	4XL
40	XL	XL	XL	2XL	2XL	4XL	4XL
42	XL	2XL	2XL	4XL	4XL	4XL	
44	2XL	2XL					

4014, 4015, 4016, 4020 & 4023

	A	B	C	D	DD
32	S	S	S	M	L
34	S	M	M	L	XL
36	M	M	L	XL	2XL
38	L	L	XL	XL	2XL
40	XL	XL	XL	2XL	3XL
42	XL	2XL	2XL	3XL	4XL
44	2XL	2XL	3XL	4XL	5XL
46	3XL	3XL	4XL	5XL	
48	4XL	4XL	5XL		
50	5XL	5XL			

4024, 4502 & 4010

	A	B	C	D	DD
32	S	S	S	M	M
34	S	S	M	M	L
36	M	M	L	L	XL
38	L	L	XL	XL	2XL
40	XL	XL	2XL	2XL	2XL
42	2XL	2XL	2XL	3XL	3XL
44		3XL	3XL	3XL	4XL
46		3XL	3XL	4XL	
48		4XL	4XL	5XL	
50		5XL	5XL		

4081, 4022 & 4700

	M	L	XL	2XL	3XL	4XL
dress	8-10	12-14	14-16	18-20	22-24	26-28
waist	35 3/4"	38 1/8"	40 1/2"	42 7/8"	45 1/4"	47 5/8"
inseam	28"	28.5"	29"	29.5"	30.25	31"

4026

	S	M	XL-2XL	3XL-4XL
dress	2-6	8-14	14-20	20-26



CONTACT

LEADING LADY

24050 Commerce Park Suite 101
Beachwood, OH 44122
216-464-5490