

ROUND STEEL POLE STRAIGHT



SPECIFICATIONS:

Pole Shaft – The pole shaft is fabricated from hot rolled steel tubing of one-piece construction with a minimum yield strength of 55,000 psi and conforms to ASTM-A500 Grade B.

Pole Top – A removable spring loaded polycarbonate pole cap is provided for poles receiving drilling patterns for side-mount luminaire arm assemblies. For top-mount luminaires, please refer to accessory list for mounting arm options.

Handhole – A reinforced handhole is provided at 18" from the base end of the pole assembly. Each handhole includes a cover and attachment hardware. All pole assemblies are provided with a 3.00" wide x 5.00" high rectangular handhole.

Base Cover (sold separately) – A two-piece square removable base cover fabricated from steel is provided with each pole assembly. It conforms to ASTM Grade B with a minimum yield strength of 55,000 psi, with powder coating.

Anchor Bolts (sold separately) – Conform to ASTM F1554 Grade 55 with a minimum yield strength of 55,000 psi. Each set comes with (4) anchor bolts, and each bolt comes with (2) hex nuts and (2) flat washers. Bolts have an "L" bend on one end and are galvanized a minimum of 12" on the threaded end.

Grounding – M6 threaded stud welded to inner shaft wall on the opposite side of the handhole. Flat washer and hex nut provided.

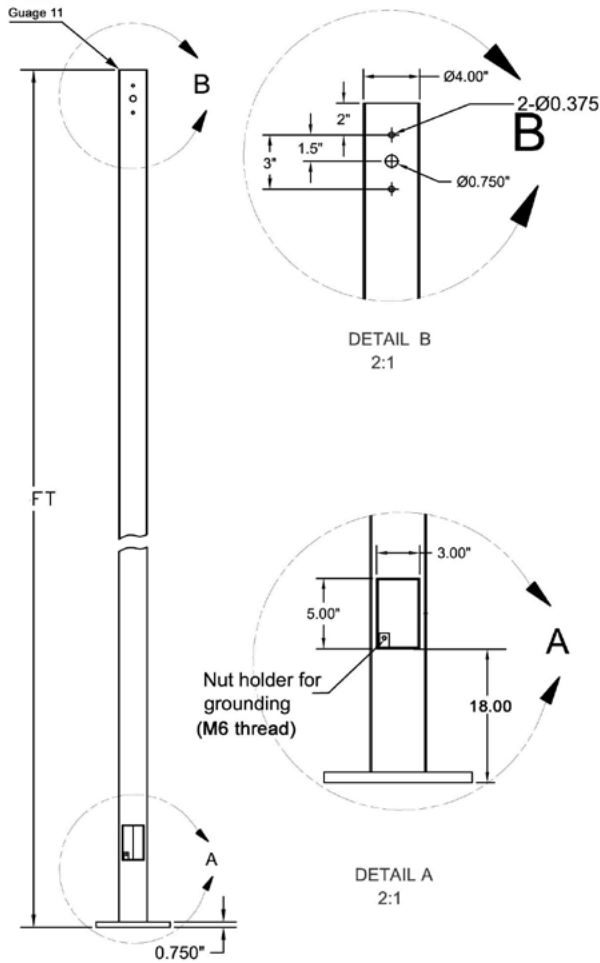
Finish – Each pole is primer painted and surface painted on sandblasted surface and baked at 400°F to ensure maximum paint adhesion, an extremely smooth and uniform finish, and durability to withstand extreme weather conditions without cracking or peeling with a five-year limited warranty. Additional inner coating available upon request, featuring five-year warranty. Consult factory for pricing and leadtimes.

MODEL SELECTION			Typical order example: PL-RD12S-B				
PL	-	RD		S	-		
FAMILY	-	SUB-FAMILY	SIZE	MATERIAL	-	COLOR	-KIT
PL= Pole	-	RD= Round	12= 12 ft 20= 20 ft 25= 25 ft	S= Steel	-	B= Bronze *W= White *L= Black	-KIT= Pole, Base Plate, Anchor Bolts (BLANK)= Pole Only

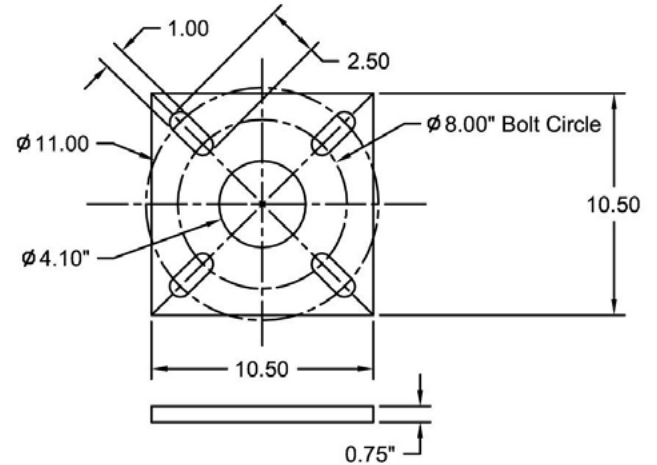
*Made-to-order

Please contact your MaxLite representative for quantities and lead times.

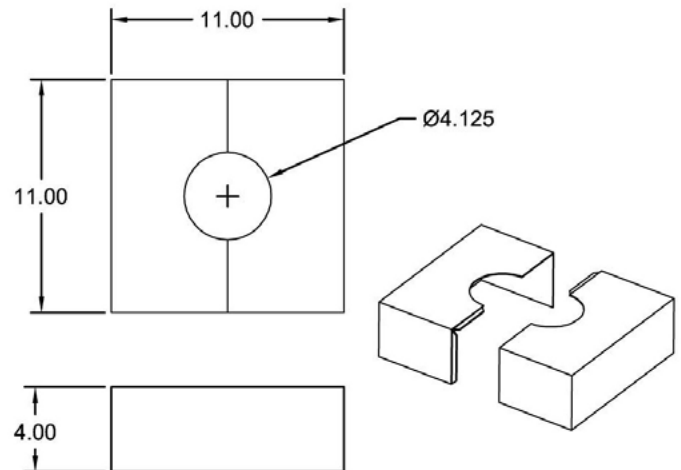
DIMENSIONS:



ANCHOR BASE DETAIL



**BASE COVER, STANDARD
(SOLD SEPARATELY)**



ANCHOR BOLTS:

POLE		BASE PLATE & COVER (SOLD SEPARATELY)		
SHAFT OUTSIDE DIMENSIONS (IN)	WALL THICKNESS (GA)	BASE PLATE DIMENSIONS (IN)	BASE COVER DIMENSIONS (IN)	BOLT CIRCLE DIAMETER (IN)
4" DIA	11	10.5" SQ. X 0.75" THK.	11.5" SQ. X 4" THK.	8"~11"

ANCHOR BOLTS (SOLD SEPARATELY)			
SHAFT OUTSIDE DIMENSIONS (IN)	WALL THICKNESS (GA)	POLE HEIGHT	ANCHOR BOLTS (SOLD SEPARATELY)
4" X 4"	11GA	12FT	3/4" X 17" ANCHOR BOLT
4" X 4"	11GA	20FT	3/4" X 30" ANCHOR BOLT
4" X 4"	11GA	25FT	3/4" X 30" ANCHOR BOLT

ANCHORAGE DATA:

COMPATIBILITY	ITEM NUMBER	DESCRIPTION
4" X 4", 12FT HEIGHT	PL-JB17	J-BOLT, 3/4"X17"X3", INCLUDING 2PCS OF WASHERS, NUTS & SPRING WASHERS, 4PCS AS A SET, COMPATIBLE WITH 12 FT POLES
4" X 4", 20FT HEIGHT	PL-JB30	J-BOLT, 3/4"X30"X4", INCLUDING 2PCS OF WASHERS, NUTS & SPRING WASHERS, 4PCS AS A SET, COMPATIBLE WITH 20 FT AND 25 FT POLES
4" X 4", 25FT HEIGHT	PL-JB30	J-BOLT, 3/4"X30"X4", INCLUDING 2PCS OF WASHERS, NUTS & SPRING WASHERS, 4PCS AS A SET, COMPATIBLE WITH 20 FT AND 25 FT POLES

BASE PLATE COVER:

COMPATIBILITY	FINISH	ITEM NUMBER	DESCRIPTION
4" DIA, ROUND POLE	BRONZE, BLACK, WHITE	PL-RDBP4-X	BASE PLATE COVER FOR 4" ROUND POLES, 2 PC SET

NOTES: X=Color; B=Bronze, L=Black, W=White

POLE SELECTION CHART:

POLE	70 MPH		80 MPH		90 MPH		100 MPH		110 MPH	
POLE HEIGHT	EPA (AT POLE TOP)	MAX. LOAD (INCLUDES BRACKET)	EPA (AT POLE TOP)	MAX. LOAD (INCLUDES BRACKET)	EPA (AT POLE TOP)	MAX. LOAD (INCLUDES BRACKET)	EPA (AT POLE TOP)	MAX. LOAD (INCLUDES BRACKET)	EPA (AT POLE TOP)	MAX. LOAD (INCLUDES BRACKET)
12 FT	19.1 FT ²	420 LBS	15.0 FT ²	390 LBS	11.8 FT ²	300 LBS	9.5 FT ²	240 LBS	7.1 FT ²	210 LBS
20 FT	10.2 FT ²	175 LBS	6.0 FT ²	150 LBS	4.4 FT ²	150 LBS	3.4 FT ²	125 LBS	2.3 FT ²	110 LBS
25 FT	3.6 FT ²	120 LBS	2.8 FT ²	100 LBS	1.9 FT ²	75 LBS	1.3 FT ²	75 LBS	1.0 FT ²	67 LBS

NOTES: EPAs are calculated using base wind velocity as indicated plus 30% gust factor

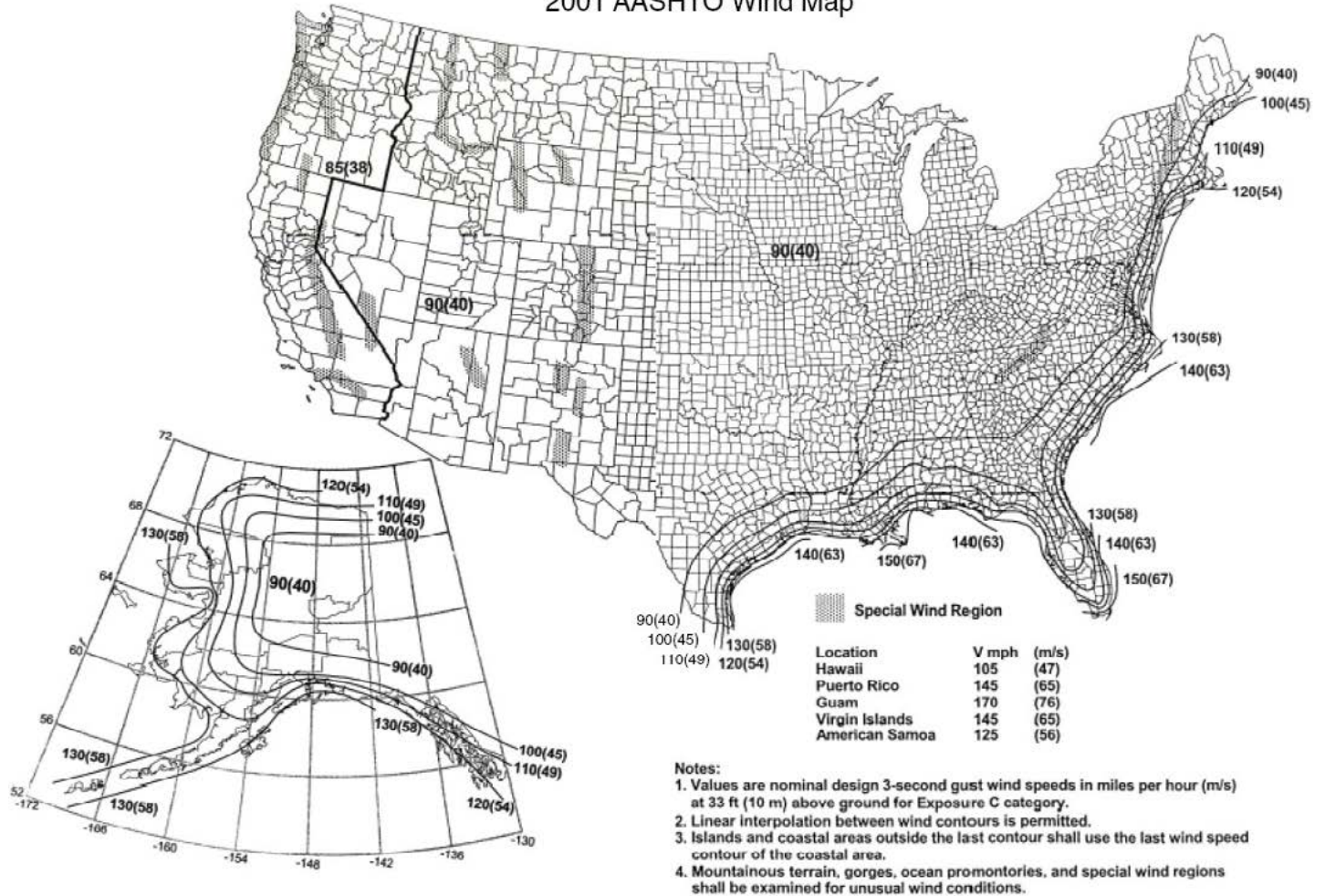
SHIPPING WEIGHT TABLE:

POLE TYPE	APPROX. WEIGHT/FT
4" dia. - 11ga	6.20 lbs/ft

ROUND STEEL POLE KITS		
MODEL	ORDER CODE	DESCRIPTION
PL-RD12S-B-KIT	1408243	KIT:Round Steel Pole, 12ft, 11ga, 4" OD, Bronze;BASE PLATE COVER, BRONZE;AND3/4"X17"X3" ANCHOR BOLTS, INCLUDING WASHERS, NUTS & SPRING WASHERS
PL-RD12S-L-KIT	1408244	KIT:Round Steel Pole, 12ft, 11ga, 4" OD, Black;BASE PLATE COVER, BLACK;AND3/4"X17"X3" ANCHOR BOLTS, INCLUDING WASHERS, NUTS & SPRING WASHERS
PL-RD12S-W-KIT	1408245	KIT:Round Steel Pole, 12ft, 11ga, 4" OD, White;BASE PLATE COVER, WHITE;AND3/4"X17"X3" ANCHOR BOLTS, INCLUDING WASHERS, NUTS & SPRING WASHERS
PL-RD20S-B-KIT	1408246	KIT:Round Steel Pole, 20ft, 11ga, 4" OD, Bronze;BASE PLATE COVER, BRONZE;AND3/4"X30"X4" ANCHOR BOLTS, INCLUDING WASHERS, NUTS & SPRING WASHERS
PL-RD20S-L-KIT	1408247	KIT:Round Steel Pole, 20ft, 11ga, 4" OD, Black;BASE PLATE COVER, BLACK;AND3/4"X30"X4" ANCHOR BOLTS, INCLUDING WASHERS, NUTS & SPRING WASHERS
PL-RD20S-W-KIT	1408248	KIT:Round Steel Pole, 20ft, 11ga, 4" OD, White;BASE PLATE COVER, WHITE;AND3/4"X30"X4" ANCHOR BOLTS, INCLUDING WASHERS, NUTS & SPRING WASHERS
PL-RD25S-B-KIT	1408249	KIT:Round Steel Pole, 25ft, 11ga, 4" OD, Bronze;BASE PLATE COVER, BRONZE;AND3/4"X30"X4" ANCHOR BOLTS, INCLUDING WASHERS, NUTS & SPRING WASHERS
PL-RD25S-L-KIT	1408250	KIT:Round Steel Pole, 25ft, 11ga, 4" OD, Black;BASE PLATE COVER, BLACK;AND3/4"X30"X4" ANCHOR BOLTS, INCLUDING WASHERS, NUTS & SPRING WASHERS
PL-RD25S-W-KIT	1408251	KIT:Round Steel Pole, 25ft, 11ga, 4" OD, White;BASE PLATE COVER, WHITE;AND3/4"X30"X4" ANCHOR BOLTS, INCLUDING WASHERS, NUTS & SPRING WASHERS

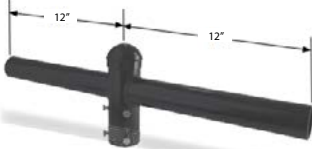
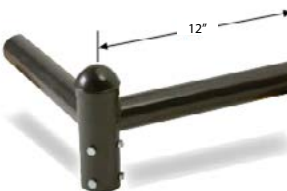
WIND SPEED MAP:

2001 AASHTO Wind Map





NOTE: This map is based on the 2001 AASHTO code requirements and is intended as a general guideline only. Local engineering standards should be consulted to determine the exact wind loading conditions for your applications.

POLES: ADAPTERS COMPATIBLE WITH 4" ROUND POLES, *MUST BE USED WITH R4VT1S00BZ

IMAGE	ITEM #	ORDER CODE	DESCRIPTION
	R4VT1S00BZ	107219	4" TO 2 3/8" ROUND VERTICAL TENON REDUCER
	*BH2RBZ	72091	BULLHORN 2-3/8" ROUND BASE 2@180° BRONZE
	*BH3RBZ	72092	BULLHORN 2-3/8" ROUND BASE 3@180° BRONZE
	*BH4RBZ	72093	BULLHORN 2-3/8" ROUND BASE 4@180° BRONZE
	*R4HT1S00BZ	107213	4" ROUND HORIZONTAL TENON 1 @ 90° BRONZE
	*R4HT218BZ	107215	4" ROUND HORIZONTAL TENON 2 @ 180° BRONZE
	*R4HT290BZ	107214	4" ROUND HORIZONTAL TENON 2 @ 90° BRONZE
	*R4HT312BZ	107217	4" ROUND HORIZONTAL TENON 3 @ 120° BRONZE

POLES: ADAPTERS COMPATIBLE WITH 4" ROUND POLES *MUST BE USED WITH R4VT1S00BZ

IMAGE	ITEM #	ORDER CODE	DESCRIPTION
	*R4HT390BZ	107216	4" ROUND HORIZONTAL TENON 3 @ 90° BRONZE
	*R4HT490BZ	107218	4" ROUND HORIZONTAL TENON 4 @ 90° BRONZE