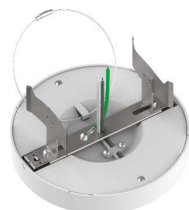


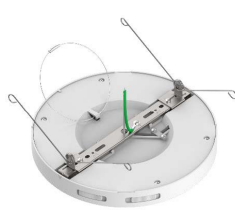
PROJECT NAME: \_\_\_\_\_ CAT. #: \_\_\_\_\_  
 NOTES: \_\_\_\_\_ FIXTURE SCHEDULE: \_\_\_\_\_

## Fleming Flush Mount/Surface Downlight

ML2LA Series



5"



7" & 12"

### Description:

LED Fleming ceiling fixtures provide exceptional performance in general lighting applications for hotels, motels, residential and commercial properties. Built with an integrated bi-level motion sensor, the CCT selectable MaxLite luminaires can be installed as retrofit downlights or as flush mounts. The fixtures produce a high quality of light with superior longevity and energy savings.

### Features:

- 2700K/3000K/3500K/4000K/5000K CCT Selectable
- E26, friction clips (5") or torsion springs (7", 12") included
- Listed as a Fixture and a Retrofit
- Integrated 3 levels (OFF, 0-100%, 20-100%) motion sensor
- Easily accessed CCT and motion sensor switches
- Field installable Emergency Battery back up kit available (includes a test switch and the charge indicator kit, no cover)

### Dimming:

- 120V with Triac dimming, 5%

### Construction:

- Plastic housing and lens

### Listings:

- cETLus listed for damp locations, indoor
- Listed as a Fixture and a Retrofit

## Ordering Information

FAMILY	SUB FAMILY	SIZE	STYLE	FINISH	WATTAGE	CRI + CCT	CONTROLS
ML2= Flush Mount	LA= LED Integrated	05'= 5"	S= Slim	WH= White	12= 12W	9CS= 90 CRI, Color Selectable (2700K/3000K/3500K/4000K/5000K)	MSV?= Bi-Level Motion Sensor
		07= 7"			13= 12.5W		
		12= 12"			18= 18W 23= 23W		

\*For 5" models, the sensor and the dimming functions do not work together. One functionality only can be used and the other turned off.  
 \*Recommended installation height is 15ft or less.

## Stocked Items

ORDER CODE	MODEL NUMBER	ENERGY STAR #
104908	ML2LA05SWH129CSMSV	2375889
104909	ML2LA07SWH139CSMSV	2375890
104910	ML2LA12SWH189CSMSV	2375893
104911	ML2LA12SWH239CSMSV	2375895

## Dimming Compatibility:

DIMMER MODELS	
Lutron	S2-LH, DV-600P, SELV-300P, NTELV-300-WH, DV-603P-LA, DVELV-300P-AL
Leviton	6631-PLW, DSM10-1LZ, 6674-P, IPL06-10Z

## Fleming Flush Mount/Surface Downlight

ML2LA Series

### Accessories

ORDER CODE	MODEL NUMBER	DESCRIPTION
100298	EBUUP15007N0100	Emergency Battery Backup, 7W, 100-347V, CEC Compliant, Field Installable for Downlights



### Sensor Settings

SELECTION SWITCH	DETECTION LEVEL	STAND-BY DIM LEVEL	HOLD TIME
OFF	NO	NO	NO
Bi-Level	100%	<25%	30s
ON/OFF	100%	0%	30s

### Specifications

	ML2LA05SWH129CSMSV	ML2LA07SWH139CSMSV	ML2LA12SWH189CSMSV	ML2LA12SWH239CSMSV
Nominal Wattage	12W	12.5W	18W	23W
Equivalent Wattage	60W INC	75W INC	125W INC	150W INC
Lumens Delivered	735 lm	1090 lm	1520 lm	1950 lm
Lumens Battery Mode	700 lm	1000 lm	1400 lm	1800 lm
Efficacy	61.25 lm/w	87 lm/w	84.5 lm/w	85 lm/w
Beam Angle	110°			
CRI	≥90			
Color Temperature (K)	2700K, 3000K, 3500K, 4000K, 5000K			
L70 Lumen maintenance	≥ 50,000 hours			
Power Factor	≥0.9			
Input Voltage	120V, 50/60Hz			
Operating Temperature	-4°F to 104°F (-20°C to 40° C)			
Construction	Plastic housing and lens			
Listings	ENERGY STAR, Rohs Compliant, FCC, cETLus Listed, JA8-Title 24			
Environment	Suitable for Damp location			
Warranty	5 Years warranty			

### Dimensions:

