



Viewing distance of 50'

Ultra Durable  
Ultra Eco Friendly  
Ultra Economical  
Ultra Light Weight  
Ultra Easy to Install  
Ultra Easy to Wash  
Ultra Thin



Lights off

15 Year Limited Warranty

**NO FRAME NEEDED**



**Universal Kit**

Includes everything you need!

- 1 Exit Sign, 9"Hx16"Lx1/8"W
- Pair of Peel & Stick Directional Chevrons
- Mounting Bracket, 4"x2.5" and Hardware

- Non-electric
- Non-radioactive
- Non-hazardous
- No expiration date
- Energy efficient
- LEED points qualified
- Zero annual operating expense
- No batteries
- No bulbs
- Low maintenance
- 100% reliable
- High or low level
- Simple installation
- 25+ year life expectancy

Available Colors



*Designed for maximum durability, the BPL Ultra 50 Series Photoluminescent Exit Sign is constructed using a poly metal material. Ideal for high and low level applications. Easy peel and stick directional chevrons. UL 924 Listed with four external charging light sources: fluorescent, metal halide, LED, and mercury vapor.*

**Overall Size:** 16"W x 9"H x .1/8" Depth  
**Letter Size:** 1" Stroke, 7" Height  
**Weight:** 1 lbs  
**Construction:** Poly metal material with photoluminescent lettering  
**Illumination:** Strontium Oxide Aluminate Photoluminescent Pigment

**Face Plate Colors:** Black, Green, Red, Silver and White  
**Letter Color:** Photoluminescent, Green Illuminating  
**Directional:** Pair of Peel & Stick Directional Photoluminescent Chevrons  
**Initial Activation:** Based on UL 924 Standards, requires minimum 5 foot-candles (54 lux) of unfiltered fluorescent, metal halide, LED, or mercury vapor lighting for 60 minutes.

**Installation:** Install photoluminescent exit signs only in locations where an external illumination source is present, is deemed reliable, and is supplied by a circuit not controlled by automatic timers or sensors and where controls are accessible only to authorized personnel. This reliable external illumination source is to be energized at all times during building occupancy.

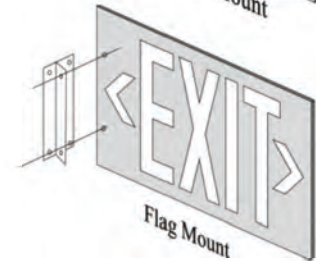
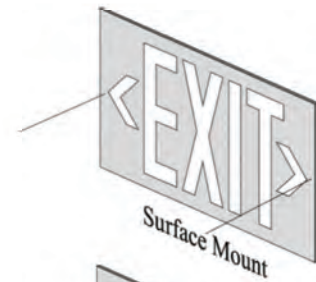
**Viewing Distance:** 50 Feet - Sign will remain visible and legible in total darkness to observers standing 50 feet away from the sign for at least 90 minutes after all light has been extinguished.

**Life Expectancy:** 25+ years  
**Applications:** High and low level, indoor use only  
**Approvals:** UL 924 Listed, Meets NFPA 101 Life Safety Code, NFPA 5000, JCAHO & OSHA, ICC, - IBC, ICBO - UBC, BOCA - NBC, SBCCI - SBC, 1/UFC, CA Bldg. Code, ASTM 2072 and CSFM Listed

**Product Care:** Periodically clean the sign face with a damp cloth, and conduct periodic inspections to ensure the sign is clear and visible.

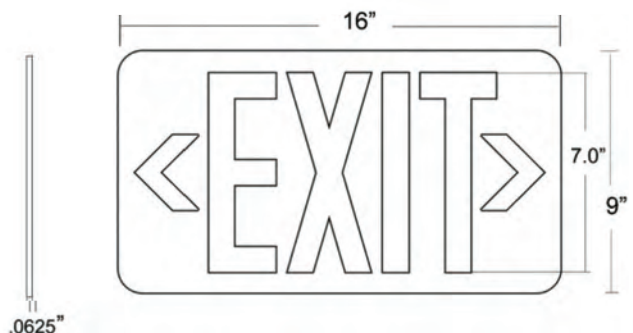
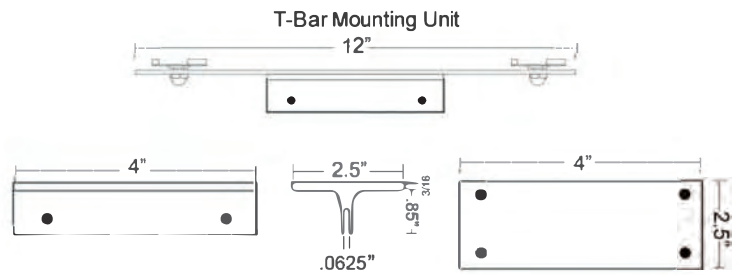
**Warranty:** 15 year limited warranty from the date of shipment against defects in workmanship and materials to the original customer.

**Mounting Options**  
 Surface • Ceiling • Flag • T-Bar



### Description

Description	Item No.'s
black, wall mount exit sign	ESW-ULTRA50
black, single-sided sign w/bracket	ESW-ULTRA50
black, double-sided sign w/bracket	ESW-ULTRA50
black, single-sided sign w/T-bar bracket	ESW-ULTRA50
black, double-sided sign w/T-bar bracket	ESW-ULTRA50
silver, wall mount exit sign	ESW-ULTRA50
silver, single-sided sign w/bracket	ESW-ULTRA50
silver, double-sided sign w/bracket	ESW-ULTRA50
silver, single-sided sign w/T-bar bracket	ESW-ULTRA50
silver, double-sided sign w/T-bar bracket	ESW-ULTRA50
red, wall mount exit sign	ESW-ULTRA50
red, single-sided sign w/bracket	ESW-ULTRA50
red, double-sided sign w/bracket	ESW-ULTRA50
red, single-sided sign w/T-bar bracket	ESW-ULTRA50
red, double-sided sign w/T-bar bracket	ESW-ULTRA50
green, wall mount exit sign	ESW-ULTRA50
green, single-sided sign w/bracket	ESW-ULTRA50
green, double-sided sign w/bracket	ESW-ULTRA50
green, single-sided sign w/T-bar bracket	ESW-ULTRA50
green, double-sided sign w/T-bar bracket	ESW-ULTRA50
white, wall mount exit sign	ESW-ULTRA50
white, single-sided sign w/bracket	ESW-ULTRA50
white, double-sided sign w/bracket	ESW-ULTRA50
white, single-sided sign w/T-bar bracket	ESW-ULTRA50
white, double-sided sign w/T-bar bracket	ESW-ULTRA50



**NOTICE**  
**EXTERNAL ILLUMINATION SOURCE REQUIRED**

**ACTIVATION**

**Minimum 5-foot candles (54 lux) of unfiltered fluorescent, metal halide or mercury vapor lighting.**

Install BPL ULTRA50 Photoluminescent EXIT signs only in locations where an external illumination source is present, is deemed reliable and is supplied by a circuit not controlled by automatic timers or sensors, and whose controls are accessible only to authorized personnel. This reliable external illumination source is to be energized at all times during building occupancy.

BPL ULTRA50 Photoluminescent EXIT signs are for **INDOOR** use only. sunlight, liquid spray or temperature outside the range 10°C – 40°C (70° – 160°F).

Check with your applicable installation codes (such as NFPA 101 – Life Safety Code) to perform periodic visibility tests.

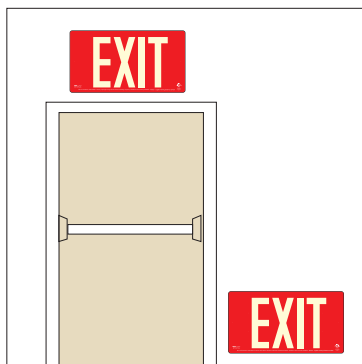
Should any changes in your external lighting types or lighting levels occur, make sure that the BPL ULTRA50 EXIT sign is still being illuminated with minimum 5-foot candles (54 lux) of unfiltered fluorescent, metal halide or mercury vapor lighting.

Periodically clean sign face with a damp cloth. Do not use any thinners or solvents on the sign face.

**VIEWING DISTANCE**  
**50 foot viewing distance**

**DIRECTIONAL INDICATORS**

Two self-adhesive photoluminescent directional indicators are supplied with each sign. Small dots are also provided to the left of the letter E and to the right of the letter T for easy alignment. If your EXIT sign is to be located other than directly over an exit, apply a directional indicator to the left of the E, pointing left, or to the right of the T, pointing right, or both, as appropriate.



**SURFACE MOUNT  
UPPER OR LOWER**



**CEILING MOUNT**



**FLAG MOUNT**

1. Place the EXIT Sign in position and mark the screw hole locations.
2. If wall anchors will be required, install them at this time (Supplied).
3. Attach the ULTRA50 EXIT Sign to the wall by using the two supplied #8 Phillips head screws. Be careful not to over tighten the screws.
4. If a directional arrows are to be used, apply them to the EXIT Sign at this time.
  - a. Alignment dots are provided on the face of the sign to ensure proper positioning of the arrows.
    - i. For Exit paths straight ahead, no arrows are needed.
    - ii. For Exit paths to the left, apply the arrow on the left side of the EXIT Sign.
    - iii. For Exit paths to the right, apply the arrow on the right side of the Exit Sign.
    - iv. If Exit paths are located to the left and right, apply both arrows to the EXIT Sign.

**Flag or Ceiling or T-Bar Mount**  
**Installation Instructions for the ULTRA 50 EXIT Sign**

1. If directional arrows are to be used, apply them to the EXIT Sign at this time.
  - a. Alignment dots are provided on the face of the sign to ensure proper positioning of the arrows.
    - i. For Exit paths straight ahead, no arrows are needed.
    - ii. For Exit paths to the left, apply the arrow on the left side of the EXIT Sign.
    - iii. For Exit paths to the right, apply the arrow on the right side of the Exit Sign.
    - iv. If Exit paths are located to the left and right, apply both arrows to the EXIT Sign.

**FOR FLAG MOUNT**

2. Place the EXIT Sign **bracket** in position and mark the screw hole locations.
3. If wall anchors will be required, drill 4ea 3/16" holes and install them at this time (Supplied).
4. Attach the EXIT Sign **Bracket** to the wall using the supplied #6 screws and anchors.
5. Drill two 3/32" holes in the sign face on the where indicated by the alignment dots near the end of the sign.
6. Slide the mounting bracket onto the side of the exit sign and align with the drilled holes.
7. Attach the ULTRA 50 EXIT sign to the bracket and secure into place by inserting the screws and tightening the acorn nuts which are supplied with the sign.

**FOR CEILING MOUNT**

2. Place the EXIT Sign **bracket** in position and mark the screw hole locations.
3. If wall anchors will be required, install them at this time (Supplied).
4. Attach the exit sign Bracket to the ceiling using the supplied #6 screws and anchors.
5. Drill two 3/32" holes in the sign face where indicated by the alignment dots near the top of the sign.
6. Slide the mounting bracket onto the top exit sign and align with the drilled holes.
7. Attach the ULTRA 50 EXIT sign to the bracket and secure into place by inserting the screws and tightening the acorn nuts which are supplied with the sign.

**FOR T-BAR MOUNT**

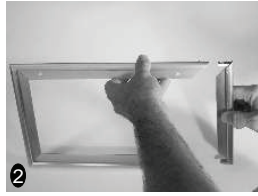
2. Place the EXIT Sign **bracket** in position and attach using the supplied T-Bar clips.
3. Slide the mounting bracket onto the top exit sign and align with the pre-drilled holes.
4. Attach the ULTRA 50 EXIT sign to the bracket and secure into place by inserting the screws and tightening the acorn nuts which are supplied with the sign.

SAVE THESE INSTRUCTIONS

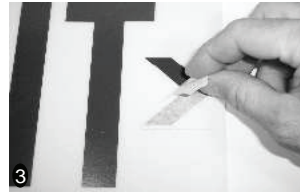




**1**  
Using the supplied 3/32" Allen wrench, remove the top and bottom set screws from one frame side.



**2**  
Pull frame side away from frame assembly.



**3**  
If a directional arrow is to be used, apply it to the EXIT Sign at this time (arrows are located on the back side of the EXIT Sign). For exit paths to the left, apply the arrow on the left side of the EXIT Sign. For exit paths to the right, apply the arrow on the right side of the Exit Sign. For exit paths straight ahead, no arrows are needed. If exit paths are located to the left and right, apply both arrows to the EXIT Sign. Alignment dots are provided on the face of the sign to ensure proper positioning of the arrows.



**4**  
Slide the EXIT Sign into the first groove of the frame assembly. If this is a double-sided installation, prepare a sign and assemble as per steps 2 and 3. Slide the assembly into the second groove facing the opposite direction.  
•For ceiling mount installation go to steps A-B.  
•For flag mount installation go to steps C-E.

## Ceiling Mount (continued)



**A**  
Slide the frame base onto the top frame piece.



**B**  
Center the base and secure it into place by tightening the set screw which is accessible through the center hole in the bottom of the base.  
•Go to steps 6-9.

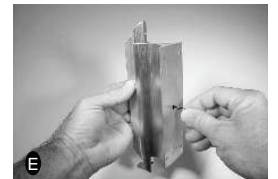
## Flag Mount (continued)



**C**  
Remove the set screw from one of the corner angle brackets on the previously removed frame side. Remove the corner bracket.



**D**  
Slide the frame base onto the frame side. Center the base and secure it into place by tightening the set screw which is accessible through the center hole in the bottom of the base.



**E**  
Reinstall the corner bracket and secure using the set screw.  
•Go to steps 6-9.



**6**  
Reinstall the frame side onto the assembly, being careful to align the sign into the frame side groove.



**7**  
Square up the frame. Reinstall and tighten the previously removed top and bottom set screws.



**8**  
Mark the position of the mounting screws on the wall or ceiling.

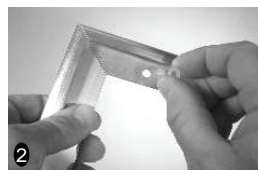


**9**  
Mount the EXIT Sign using proper hardware and techniques.

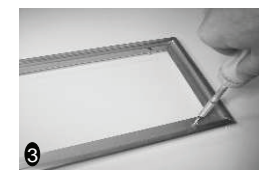
## Surface Mount



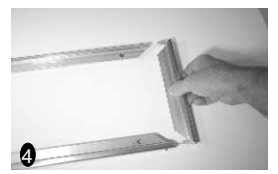
**1**  
With EXIT Sign and Lens removed, place assembled frame in position and mark screw hole locations. If wall anchors will be required, install them at this time (supplied).



**2**  
Locate the four supplied frame spacers. The spacers attach to the back side of the frame, which is not countersunk. Attach one self-adhesive spacer over each frame-mounting hole.



**3**  
With the four spacers in place, position the frame with the spacers facing the wall. Attach the frame to the wall by using the four supplied #8 flat head screws. Be careful not to over tighten the screws.



**4**  
Using the supplied 3/32" Allen wrench, remove the top and bottom set screws from one frame side. Pull the frame side away from the frame assembly.



**5**  
If a directional arrow is to be used, apply it to the EXIT Sign at this time (arrows are located on the back side of the EXIT Sign). For Exit paths to the left, apply the arrow on the left side of the EXIT Sign. For Exit paths to the right, apply the arrow on the right side of the Exit Sign. For Exit paths straight ahead, no arrows are needed. If Exit paths are located to the left and right, apply both arrows to the EXIT Sign. Alignment dots are provided on the face of the sign to ensure proper positioning of the arrows.



**6**  
Slide the EXIT Sign into the front groove of the frame assembly.



**7**  
Reinstall the frame side onto the frame assembly being careful to align the sign into the frame side groove.



**8**  
Reinstall and tighten the previously removed top and bottom set screws.

