

PROJECT NAME: \_\_\_\_\_ CAT. #: \_\_\_\_\_  
 NOTES: \_\_\_\_\_ FIXTURE SCHEDULE: \_\_\_\_\_

# PathMAX™ Slim Bollards CCT Selectable



Round Dome Type V



Square Type V



Round Dome Louver



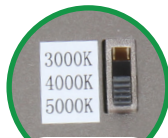
Round Flat Louver



Round Flat Type V



Sensor/Photocell



CCT Selectable Switch

### Product Description:

The PathMAX™ Slim LED Bollards offer a modular design with field selectable color temperatures (3000K, 4000K, 5000K) that simplify the product choice for distributors and contractors. Available in round and square silhouettes, the bollards are controls ready and designed with a specialized optics that projects light down and outward for ample illumination on walkways.

### Features:

- CCT Selectable 3000K, 4000K & 5000K
- Modular design with field replaceable heads and shafts
- Lengths: 42" , 36"
- Distributions / optics: Cone reflector (Type V), louver
- Vandal resistant screws

### Dimming:

- 120-277V option available with 0-10V dimming (0%)

### Construction:

- Die-cast aluminum body
- Clear Polycarbonate lens

### Mounting:

- Mounting kit available standard with each bollard (includes mounting base, anchor bolts, nuts and washers )

### Listings:

- UL Listed for Wet Locations, Outdoor
- DLC Premium: Not all product variations listed on this page are DLC qualified. Visit <https://www.designlights.org/search/> to confirm qualification

### Controls Ready:

Simple plug and play Sensor Receptacle/Socket enables installation of c-Max control nodes, photocell and motion sensor without changing the fixture.

## Ordering Information

FAMILY	-	SUB FAMILY	SHAPE	STYLE	WATTAGE	VOLTAGE	CCT	DISTRIBUTION	HEIGHT	FINISH	CONTROLS
BL= PathMAX™ Bollard, Slim Series		CL= Classic	R= Round S= Square	D= Dome Top F= Flat Top	22= 22W	U= 120-277V	CS= 3000/ 4000/ 5000K	BLANK= Type V  LR= Louvers	BLANK= 42" 36= 36"	B= Bronze  <i>Contact Maxlite for custom finishes</i>	<sup>2</sup> CR= Controls Ready port

<sup>1</sup>Only available as a Flat Top, Type V distribution, 42" model

<sup>2</sup>Only available with 42" height

### DLC ID

MODEL NUMBER	DLC ID
BL-CLSF22UCSB[BLANK; CR]	PLANH2MJUG7Y
BL-CLRD22UCS[BLANK, 36]B[BLANK; CR]	PLGDLA1V01NH
BL-CLRF22UCS[BLANK, 36]B[BLANK; CR]	PLZNC7TMOEDP

\*Louver models are not DLC qualified. Visit <https://www.designlights.org/search/> to confirm qualification of other product variations.

## Accessories

MODEL NUMBER	ORDER CODE	DESCRIPTION	IMAGE
CN-REMOTE	105567	Control Node Remote Control	
CN-RDMSB	105566	Control Node Round, PIR Motion Sensor/ Photocell, Bronze, IP66	
CN-RDPCB	105569	Photocell Node Round, Bronze, IP66	
NN-RDB	105897	Network Node Round, Bronze	



**5-year standard warranty with labor allowance\*** (further details available at [www.maxlite.com/warranties](http://www.maxlite.com/warranties))

# PathMAX™ Slim Bollards

CCT Selectable

### Dimmers

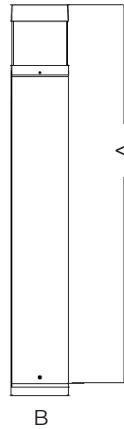
LEVITON	DD710-BDE, IP-710-LFZ, DS710-10E
LUTRON	DVTV-WH, DVSTV-453P

### Specifications

	BL-CRSF22UCSB (Square, Type V)	BL-CLRx22UCSxxB (Round, Type V)	BL-CLR22UCSLRB (Round, Louver)
Power Consumption (W)		22W	
Lumens Delivered (lm)	2860	2860	1320
Efficacy (lm/W)	130	130	60
CRI		≥80	
CCT (K)	CCT Selectable 3000K, 4000K & 5000K		
BUG Rating	B1-U3-G1		B1-U3-G2
L70 Lifetime (hrs)		≥50,000 Hrs	
Input Voltage	120-277Vac, 50/60Hz		
Power Factor	≥0.9		
Operating Temperature	-40°F - 122°F (-40°C - 50°C)		
Listings	DLC Premium, UL Listed, IP65		
Environment	Outdoor, Wet location		
Warranty	5 year warranty		

### Dimensions:

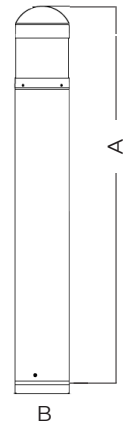
Bollard	A (H)	B (W)
42" Square	42.00"	6.30"
42" Round Flat Top	42.00"	
42" Round Dome Top	43.66"	
36" Round Flat Top	36.00"	
36" Round Dome Top	37.68"	



Square

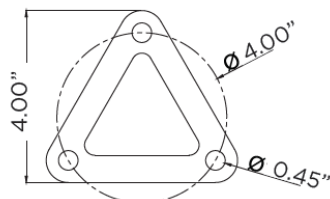


Round Flat Top

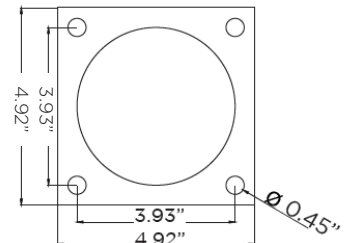
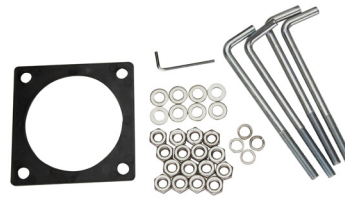


Round Dome Top

### Mounting Kit Details: (Included standard)



Round



Square

# PathMAX™ Slim Bollards

CCT Selectable

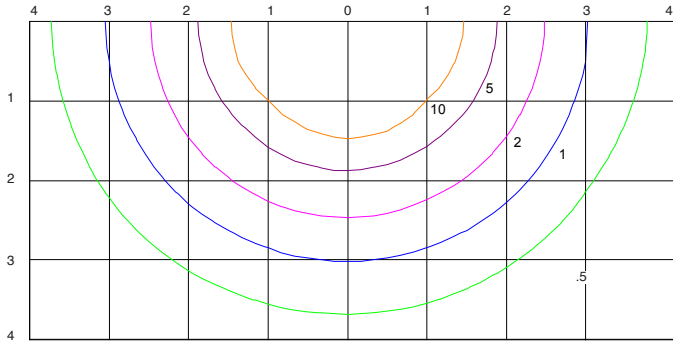
### ISOFOOTCANDLE:

Each gridline represents one mounting height.  
 For mounting heights other than noted multiply FC by the below factor.

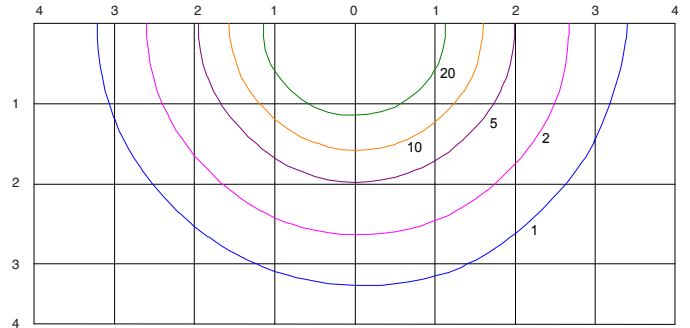
#### LEGEND

- |   |  |
|---|--|
| <span style="display: inline-block; width: 15px; height: 15px; background-color: #00FF00; border: 1px solid black; margin-right: 5px;"></span> 0.5 fc | <span style="display: inline-block; width: 15px; height: 15px; background-color: #800080; border: 1px solid black; margin-right: 5px;"></span> 5 fc  |
| <span style="display: inline-block; width: 15px; height: 15px; background-color: #0000FF; border: 1px solid black; margin-right: 5px;"></span> 1 fc   | <span style="display: inline-block; width: 15px; height: 15px; background-color: #FF8C00; border: 1px solid black; margin-right: 5px;"></span> 10 fc |
| <span style="display: inline-block; width: 15px; height: 15px; background-color: #FF00FF; border: 1px solid black; margin-right: 5px;"></span> 2 fc   | <span style="display: inline-block; width: 15px; height: 15px; background-color: #008000; border: 1px solid black; margin-right: 5px;"></span> 20 fc |

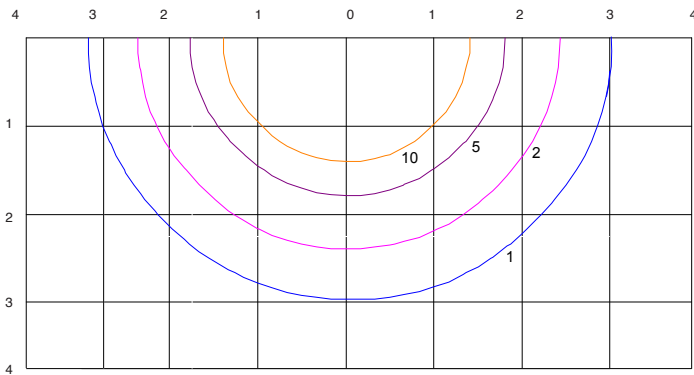
$$\text{Factor} = \frac{(\text{Chart's Mtg Height})^2}{(\text{Actual Mtg Height})^2}$$



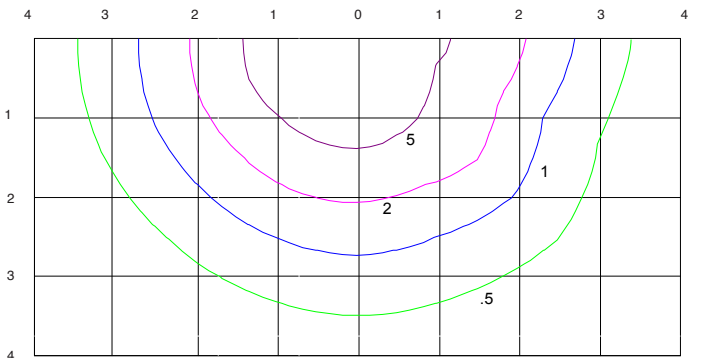
42" SQUARE



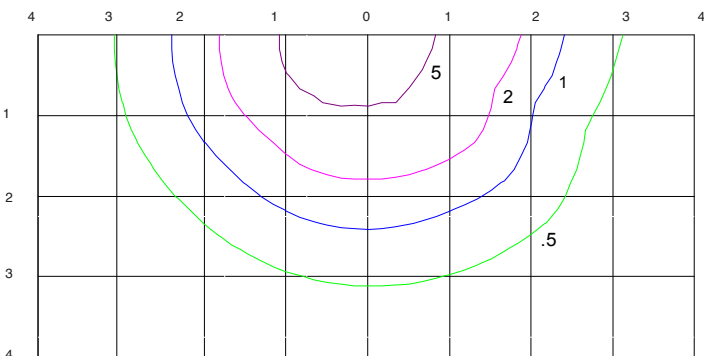
36" ROUND TYPE V



42" ROUND TYPE V



36" LOUVER



42" LOUVER