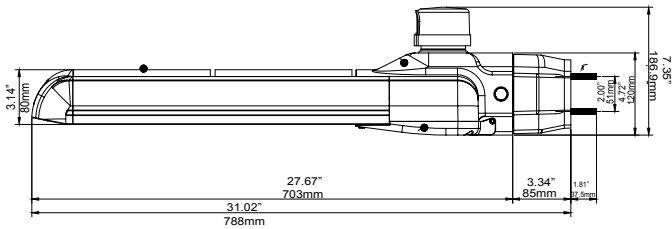
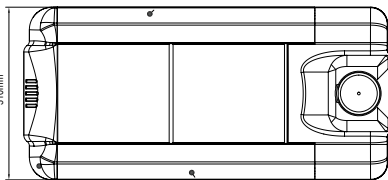
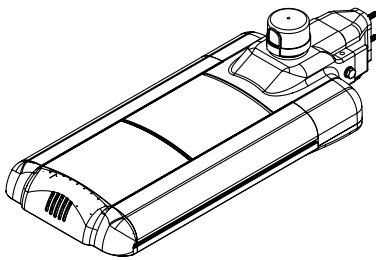


## LED X-LARGE AREA LUMINAIRES ARX SERIES



ARX with motion sensor option



### PRODUCT DESCRIPTION:

LED X-Large Area Lights (ARX) are designed to replace 1000-watt metal halide fixtures with leading-edge efficacy and a superior design. Ideal for parking lots, automotive dealerships, and large retail applications, the ARX series offers a cost- and energy-efficient solution. The fixture is lighter than MH counterparts and offers a low effective projected area, making it a versatile option that can be used with existing poles. Replacing a 1000-watt MH incumbent with a 250-watt LED fixture provides significant energy savings and a quick return on investment.

### FEATURES:

- Standard Integral 20kV surge suppression
- Standard 0-10V dimming drivers
- Type V optics available
- Universal (120-277V), High Voltage (347-480V) options
- Operating Temperature: -40°F – 108°F
- Power Factor > 0.95; THD < 10%
- Rated for 100,000 hour L85 maintenance @ TM-21 standard 25°C
- IP66 rated for water, dust ingress

### CONTROLS:

**Motion/Daylight Sensor:** 0-10V digital passive infrared-based motion sensor with integral photocontrol allowing for three output states: 100%; adjustable low and high modes; or 0% output. The high (default 10V) and low (default 1V) modes are fully adjustable from 0 to 10V. All control parameters such as hold time, daylight threshold, dimming level, and ramp up and fade down times can be adjusted via a wireless configuration tool capable of storing and transmitting sensor profiles. The operating temperature of the sensor is -40°F - 167°F. At its maximum mounting height of 40 feet, the sensor can detect motion up to 50 feet away. The sensor is mounted inside the bottom of the fixture body.

See MS4 datasheet for more information.

### MOUNTING:

- Mounting 4" Square Pole Arm
- 2-3/8" Slipfitter Knuckle with ±25° adjustability

### DIMENSIONS:

Please go to page 3 to see mounting dimension drawings.

MODEL SELECTION		Typical order example: ARX25UT550B0A0							
AR	X	25	U	T5	50				
FAMILY	SIZE	NOMINAL WATTAGE, EQUIVALENCY	VOLTAGE	DISTRIBUTION	CCT	FINISH	PHOTOCONTROL	MOUNTING	OPTIONS
AR= Area Light	X= X-LARGE	25= 250W, 1000W MH equivalent	U= 120-277V, std H= 347-480V	T5= Type V	50= 5000K	B= Bronze, std RAL 8019 W= White, RAL 9003	0= None, std *3= Photocontrol receptacle 3-pin	A= 4" Square Pole Arm K= 2-3/8" Slipfitter Knuckle	0= None *4= Daylight/ Motion Sensor (Hi/Low/Off)

### NOTES:




\*Made-to-order item. Please contact your MaxLite representative for order quantities and lead times.

		ARX25UTXXXXXX
ITEM	SPECIFICATION	DETAILS
<b>GENERAL PERFORMANCE</b>	Input Power (W)	252
	Lumens Delivered (lm)	28,980
	Efficacy (lm/W)	114
	CRI	≥78
	Lumen Maintenance (L85, TM-21 @ 25°C)	100,000
	Color Temperature	5000K
<b>ELECTRICAL</b>	Input Voltage	120-277V standard; 347-480V optional
	Power Factor (277V)	≥0.95
<b>PHYSICAL</b>	Effective Projected Area	0.95 ft <sup>2</sup>
	Weight	19.8 lbs
<b>CERTIFICATION</b>	Operating Temperature	-40°F - 108°F
	Certification	cULus, LM-79, DLC PREMIUM (Universal voltage models), IP66, T24 compliant
	Environment	Outdoor, wet location
	Warranty	5 years

**ORDERING\*:**

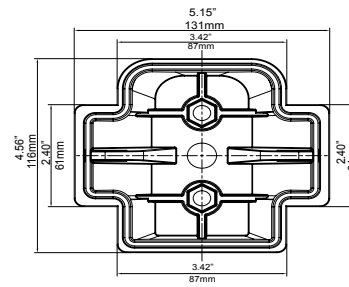
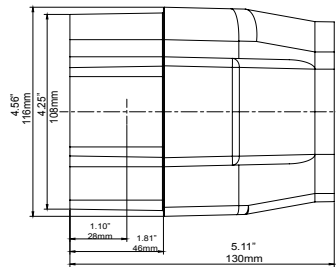
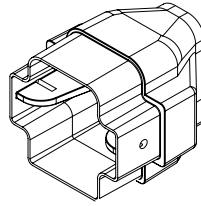
ORDER CODE	MODEL	NOMINAL WATTAGE	DISTRIBUTION	MOUNTING OPTIONS	INPUT VOLTAGE	CCT
100953	ARX25UT550B0A0	250W	Type V	4" Square Pole Arm	120-277V	5000K
100954	ARX25UT550B0K0		Type V	2-3/8" Slipfitter		

\*Please contact your MaxLite representative to order products that don't have order codes listed here.

ACCESSORIES			
ORDER CODE	MODEL	DESCRIPTION	ACCESSORIES IMAGE
72117	S4HT490BZ	4" Square Horizontal Tenon Quad @ 90°, Bronze	
72083	S4HT218BZ	4" Square Horizontal Tenon double @ 180°, Bronze	
72084	S4HT290BZ	4" Square Horizontal Tenon double @ 90°, Bronze	

**DIMENSIONS:**

4" Square Pole Arm



2-3/8" Slipfitter Knuckle

