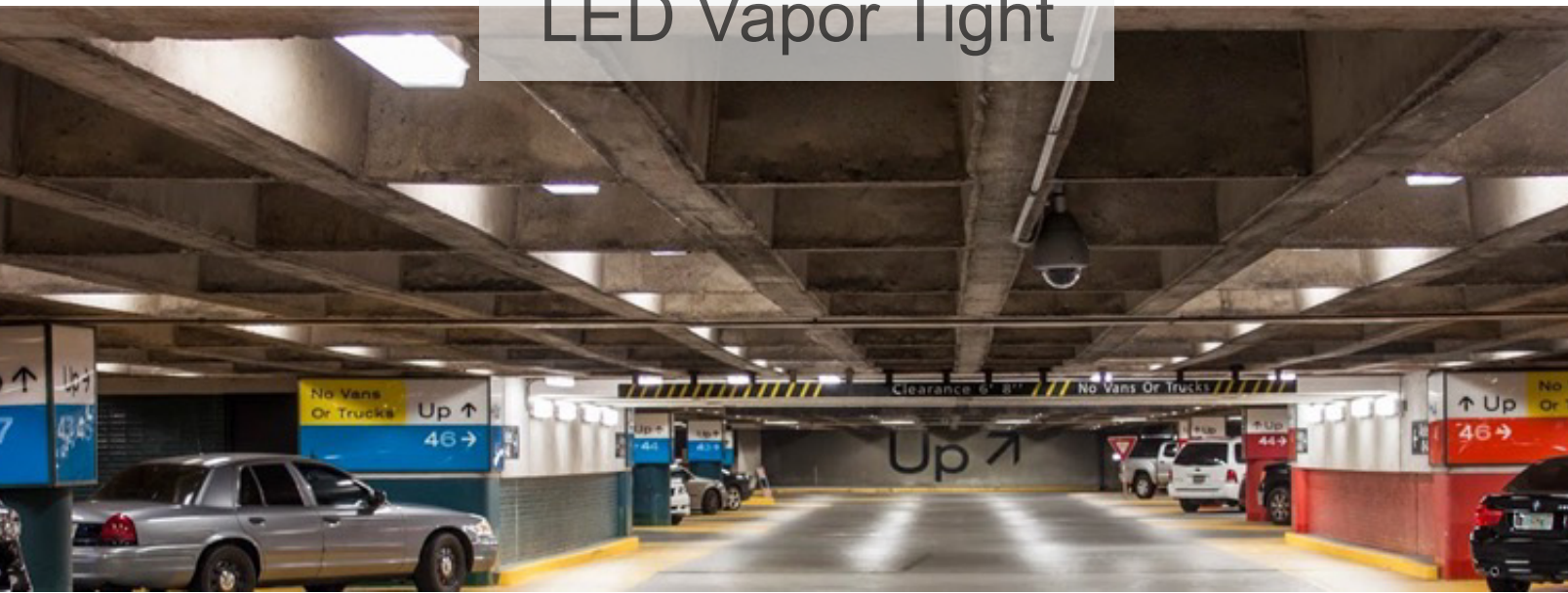
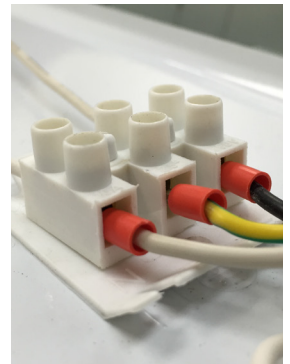
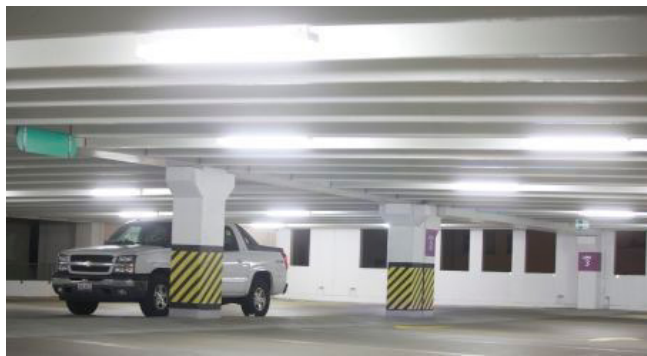



LED Vapor Tight



"The most cost efficient vapor tight fixture we have ever evaluated..." Facility Maintenance Magazine



Specifications

Wattage:	18W	36W	54W
Model Number:	AE-L-VT4-18	AE-L-VT4-36	AE-L-VT4-54
DLC #:	BL-T8-18W 1200		
DLC Partner:	BRAVOLED		
UL & CUL Number	E349290		
Certifications:			
Voltage:	120-277V		
Power Factor:	0.98		
Frequency:	50/60Hz		
Lumens Efficiency:	115LM/W		
Kelvin (CCT):	3000K/4000K/5000K		
CRI:	83+		
IP Rating:	IP67		
Beam Angle:	220°		
Lens:	Frosted / Clear PC		
Materials:	Aluminum + PC		
LM70 Life Time:	100,000		
Dimming Availability:	NA. (Default)		
Warranty:	5 Years		
Temperature Range:	-34°C ~ 54°C (-30°F ~ 120°F)		
Weight:	2KG 4.4LB	2.4KG 5.3LB	2.8KG 6.2LB
Packaging Dimensions:	1270*76*107mm 50.0*3.0*4.2INCH	1270*147*107mm 50.0*5.8*4.2INCH	1270*218*107mm 50.0*8.6*4.2INCH
Replacement Wattage:	72W	144W	216W

Guide

Note:

Please read this entire manual to fully understand and safely use the luminaire. The products can be used at the voltage of 100-277V AC, 50/60HZ, suitable for indoor and outdoor, moisture proof and dust proof. Specifications are subject to change without notice. Please visit www.altechefficiency.com for the most recent user guide versions.

Unpacking:

1. Unpack and carefully examine the product.
2. Report any damage and save all packing materials if any part(s) were damaged during shipping.
3. Do not attempt to use the fixture if it is damaged.

INSTALLATION INSTRUCTIONS:

1. CONSULT A QUALIFIED ELECTRICIAN TO ENSURE CORRECT BRANCH CIRCUIT CONDUCTOR.
2. The product should be installed and operated by a qualified electrician or technician in accordance with relevant local codes.
3. Risk of electric shock. Ensure that main power source is off when wiring or soldering the sections of the product.

MAINTENANCE:

1. Disconnect the product from the power supply prior to cleaning.
2. Use a dry or slightly moistened cloth for cleaning.
3. Never use any chemicals or abrasive materials for cleaning.

INSTALLATION STEPS:

1. Locate the mounting clips shipped in the box.
2. Mount the clips at the appropriate distance on the mounting surface to ensure that they will snap into place in the proper position on the back of the fixture itself.
3. The area that the clips attach to have extra distance area to ensure a secure mount even if the holes are slightly off
4. Properly wire the fixture into the electrical source including the ground wire.
5. Make sure that the vapor tight cover is snapped closed and secure