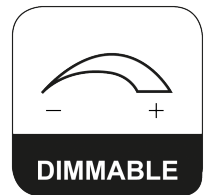
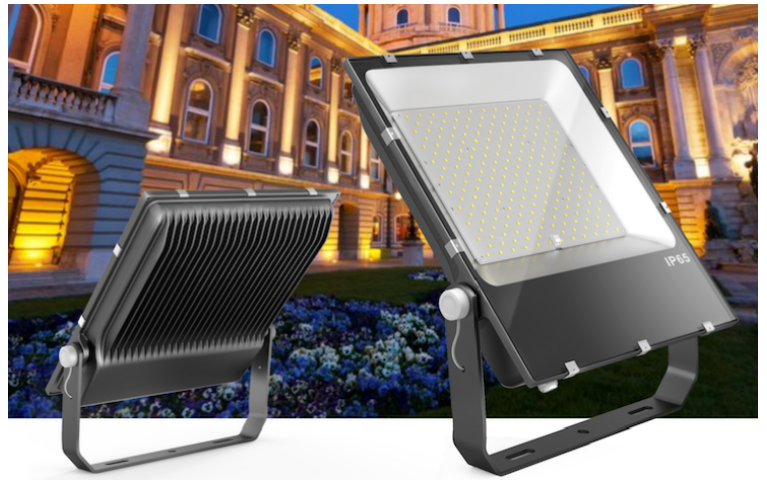
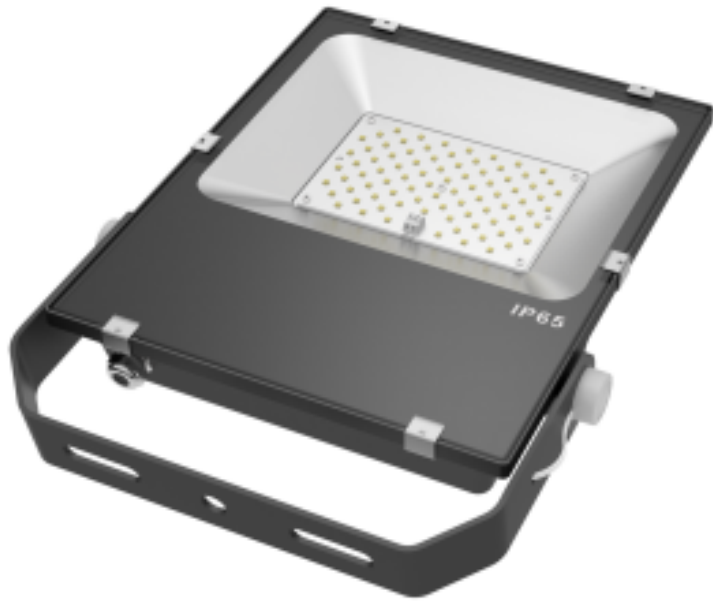


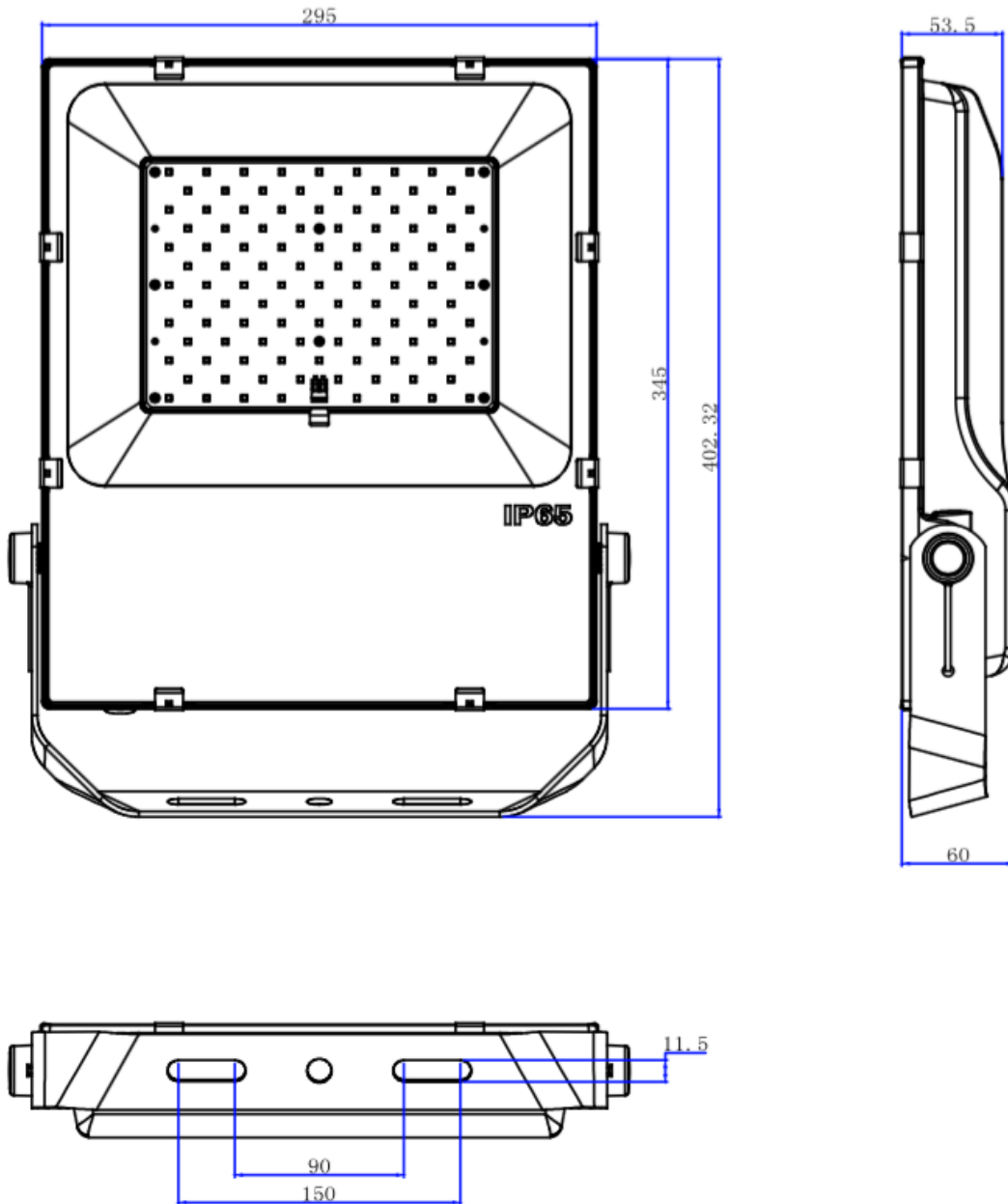
# LED Flood Lights



# Specifications

<b>Model Number</b>	<b>AE-L-FLIS-120</b>
<b>DLC #</b>	U-IFL-120
<b>DLC Partner</b>	Ultron Industries
<b>Input Wattage</b>	120W
<b>Replacement Wattage</b>	480W MH
<b>Input Voltage Range</b>	100-277V
<b>Delivered Lumens</b>	14400 lm
<b>Lumen Efficiency</b>	120 lm/w
<b>Color Rendering Index (CRI)</b>	70+
<b>Color Temperature (Kelvin)</b>	3000K-5700K
<b>Beam Angle</b>	120°
<b>Power Factor</b>	0.99
<b>Frequency</b>	50/60Hz
<b>MAX THD (%)</b>	15
<b>Min. Ambient Temp</b>	-30.0°F / -34.4°C
<b>Max. Ambient Temp</b>	130.0°F / 48.9°C
<b>IP Rating</b>	IP65
<b>Dimming Compatible</b>	3 in 1 dimming function (1~10Vdc or PWM signal or resistance)
<b>Product Weight</b>	15.4LB / 7.0KG
<b>Product Height</b>	2.4in / 60mm
<b>Product Length</b>	15.8in / 402mm
<b>Product Width</b>	11.6in / 295mm
<b>Lens</b>	Glass
<b>Materials</b>	Die Cast Aluminum
<b>Finish</b>	Black (Default)
<b>LM70 Life Time</b>	100,000 Hours
<b>UL/cUL</b>	E481056
<b>DesignLights Consortium®</b>	YES
<b>CE</b>	YES
<b>FCC</b>	YES
<b>Warranty</b>	5 Years

# Dimensions - 120W



## Note:

Please read this entire manual to fully understand and safely use this fixture. The products can be used at the voltage of 100-277V AC, 50/60HZ, suitable for indoor and outdoor, moisture proof and dust proof applications. Specifications are subject to change without notice. Please visit [www.altechefficiency.com](http://www.altechefficiency.com) for the most recent product information.

## Unpacking:

1. Unpack and carefully examine the product to make sure all of the materials are included.
2. if any part(s) were damaged during shipping, please contact us immediately and save all packing materials
3. DO NOT ATTEMPT TO USE THE FIXTURE IF IT IS DAMAGED IN ANY WAY.

## Before You install:

1. Before installing any light fixtures, carefully read and understand all of the installation instructions and product labels as well as all advisories and warnings. Failure to do so can result in injury and/or void the warranty.
2. CONSULT A QUALIFIED ELECTRICIAN TO ENSURE THE PROPER INSTALLATION OF ALL FIXTURES.
3. The product should be installed and operated in accordance with ALL relevant local codes.
4. There is risk of electric shock. Ensure that main power source is off when wiring any fixtures.

## Maintenance:

1. Disconnect the product from the power supply prior to cleaning.
2. Use a dry or slightly moistened cloth for cleaning.
3. Never use any chemicals or abrasive materials on fixture or components.

## Installation Instructions:

1. Connect the input and ground wires of the fixture to the power supply. **Brown is live. Blue is neutral. Green/Yellow is ground.**
2. Secure the fixture to the mounting box with appropriate hardware.
3. Adjust fixture light direction.
4. This fixture is designed for years with minimum care. For optimum performance, periodically clean the lens with a mild, non abrasive glass cleaner and soft cloth. DO NOT use solvents or cleaners containing abrasive agents. When cleaning the fixture, make sure you have the power turned off and do not spray liquid cleaner directly onto the LED chips, board or wiring