

ENGAGEMENT RING GUIDE

The Anatomy of a Ring

Shank Styles

Ring Profiles

Ring Styles

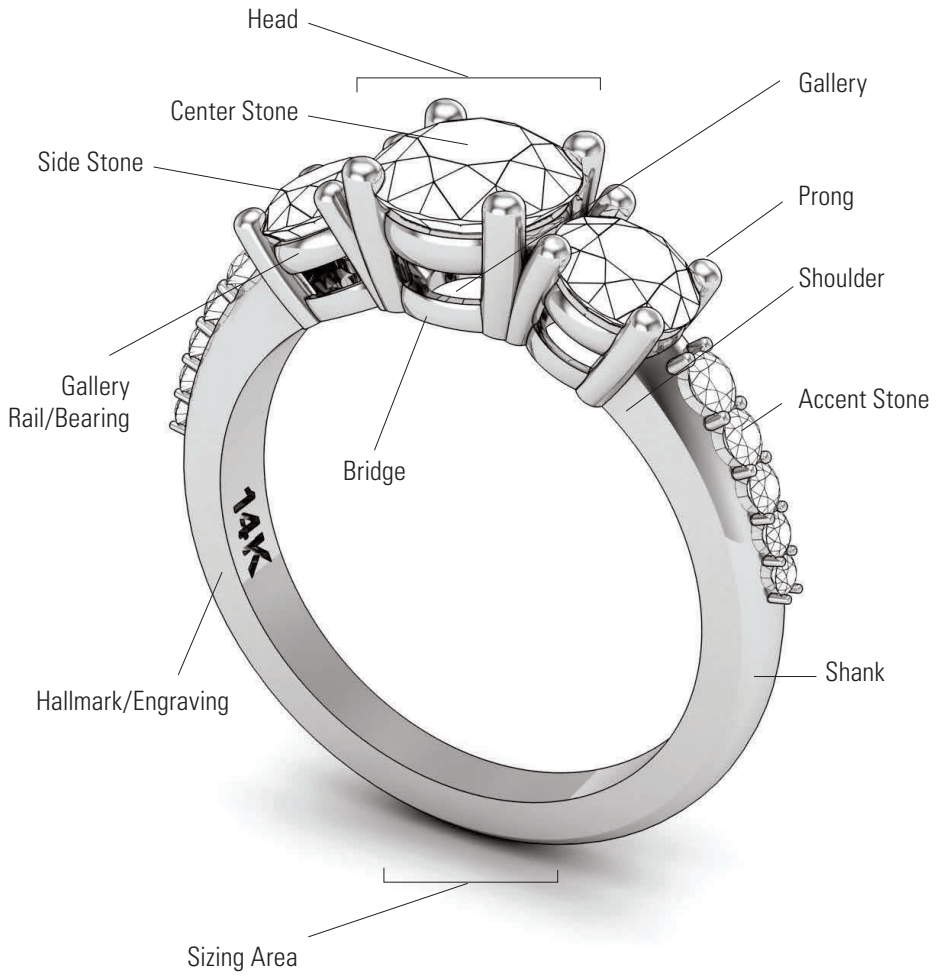
Bridal Sets

Ring Size Reference

Prong Styles

Setting Styles

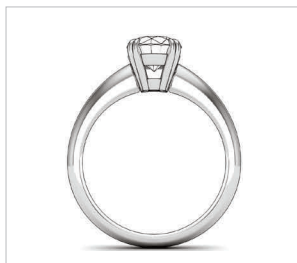
THE ANATOMY OF A RING



RINGS | The Anatomy of a Ring



Top/Looking Down View



Through Finger View



Side View

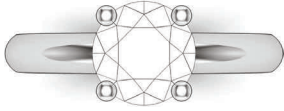
SHANK STYLES



Traditional



Euro-Style



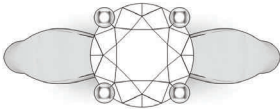
Straight



Tapered



Reverse Tapered



Pinched



Flair



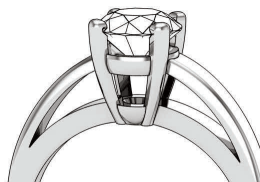
Bypass



Split

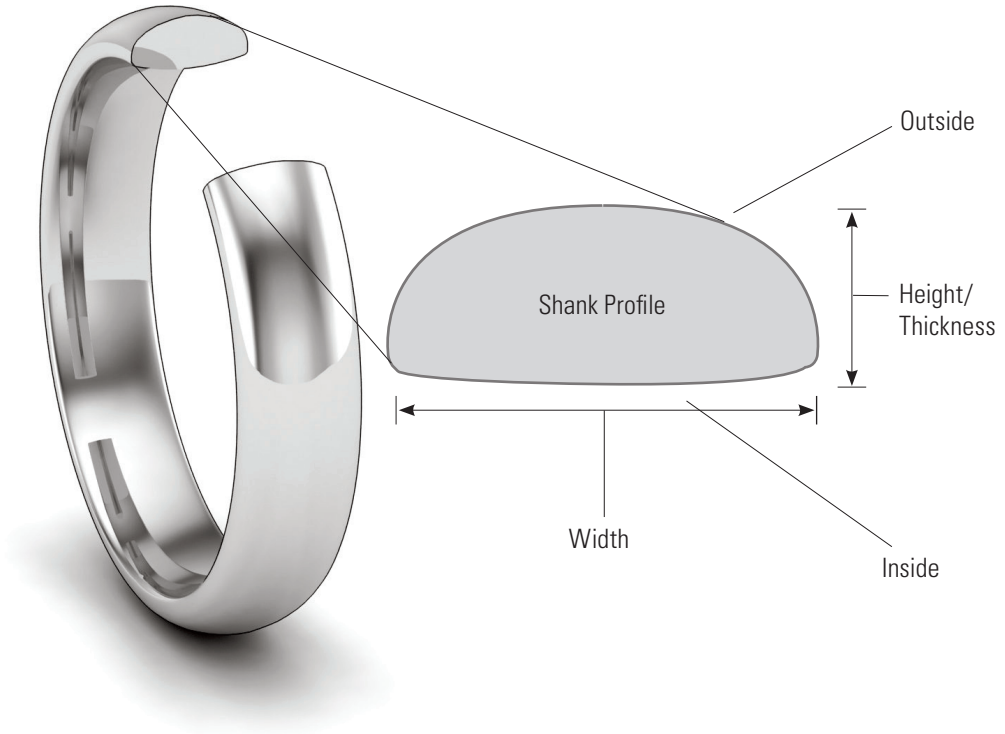


Freeform

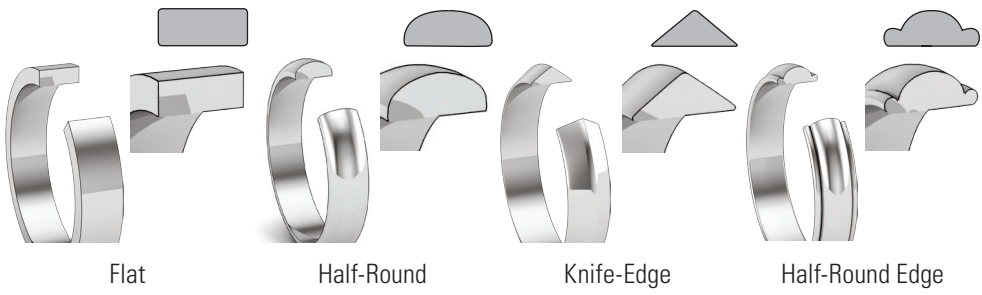


Cathedral

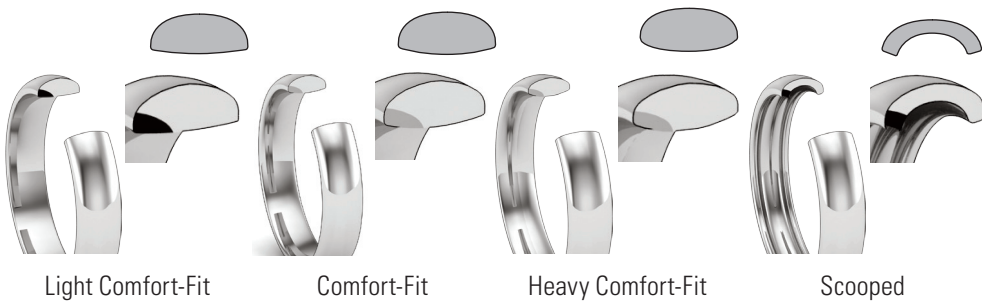
RING PROFILES



OUTSIDE PROFILES



INSIDE PROFILES





Fashion



Halo



3-Stone



Promise



Semi-Mount



Award/Signet



Engagement



Solitaire



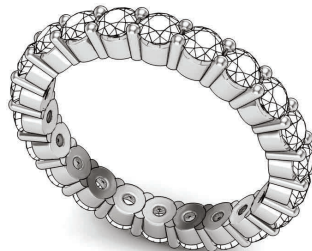
Bridal Set
(Engagement Ring and Wedding Band)



Wedding Band



Anniversary Band



Eternity Band



SHADOW BAND/NOTCHED BAND

A shadow band is masterfully crafted to shadow the engagement ring. The band is customized to perfectly accent the engagement ring so that no gap can be seen.

STRAIGHT BAND

A straight band is designed to complement and sit next to the engagement ring. One advantage of a straight band is that it can be worn independently from the engagement ring. A straight band can fit flush against the engagement ring. However, if the engagement ring has a center setting that prevents the band from sitting flush, a gap can be seen between the ring and band.



Straight Flush

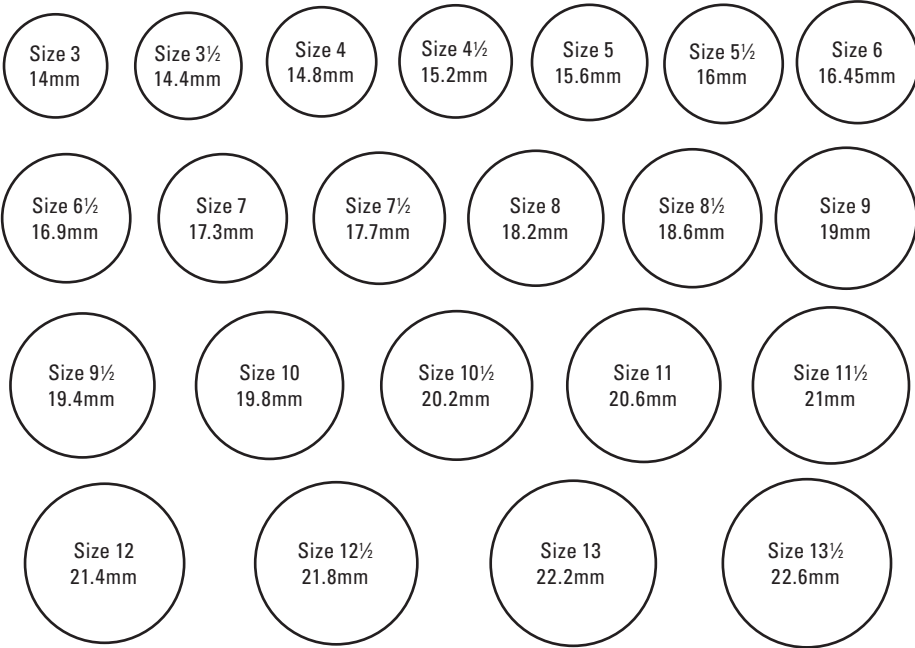
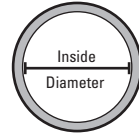


Straight With Gap

RING SIZE REFERENCE

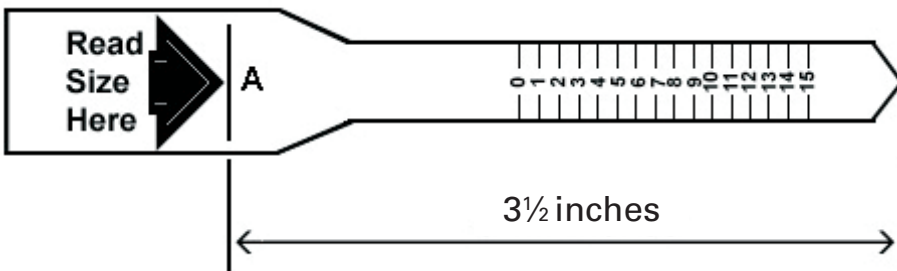
Option 1:

- Place your ring over the circles, matching the inside edge of the ring to the nearest in size.
- If the ring falls between two sizes, select the larger size.

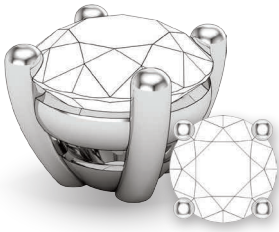


Option 2:

- **Copy this page.**
- Cut out the ring size chart and then cut a slit for slot "A".
- Wrap the ring size chart around your finger with the numbers facing outward.
- Insert "B" through slot "A" until it fits snugly around the finger where the ring will be worn.
- The number aligned along the slit is your ring size. If the measurement occurs between two numbers, your size is a half size. For example, if it falls between 7 and 8 then your ring size is 7½.



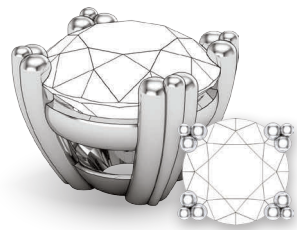
PRONG TYPES



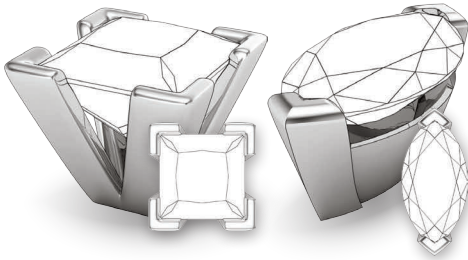
Single



Double



Triple



V-Prong/Chevron



Decorative Double

PRONG COUNT



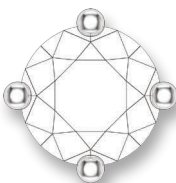
Four (Standard)



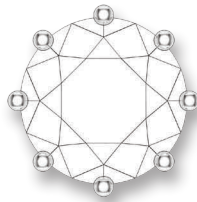
Six



Two (Vertical)



Four (Diagonal)



Eight



Two (Horizontal)



Basket



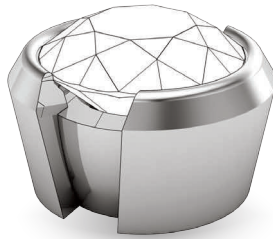
Peg Head



Decorative



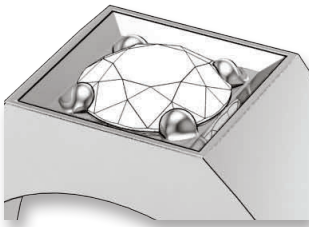
Bezel



Half-Bezel



Bar/Channel



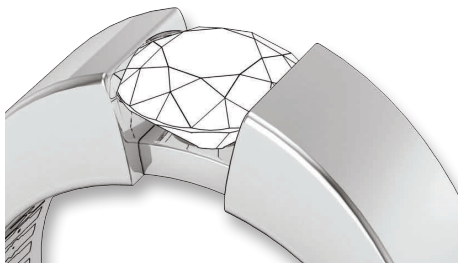
Bright-Cut



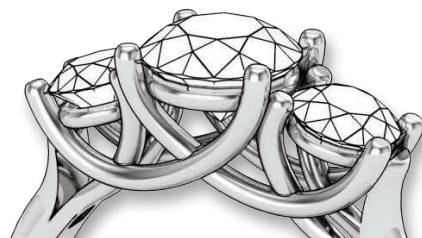
Bridge Accent



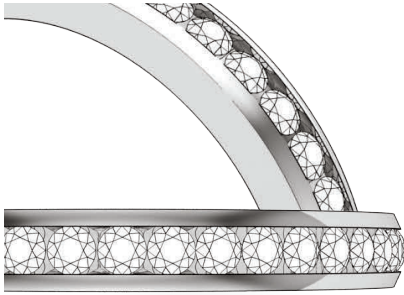
Illusion



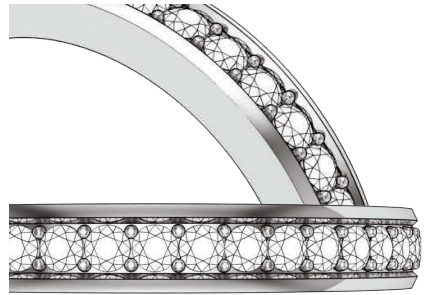
Channel



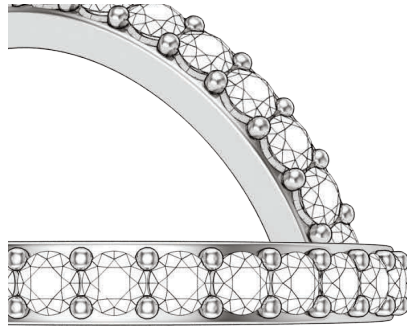
Trellis



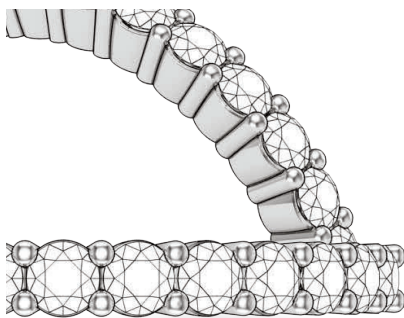
Channel



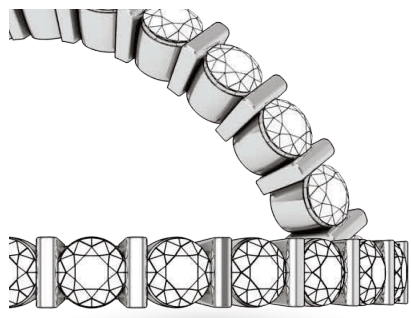
Bead and Bright-Cut/Pinpoint



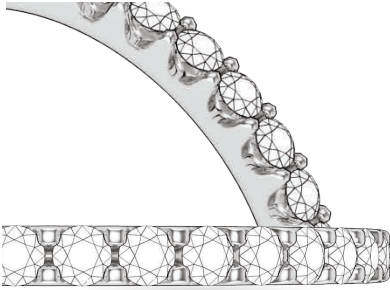
Surface Prong



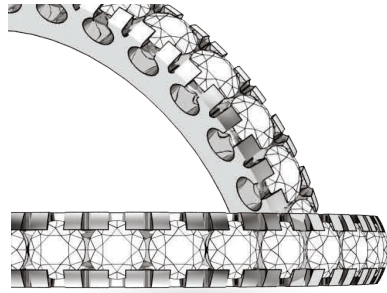
Shared Prong



Bar



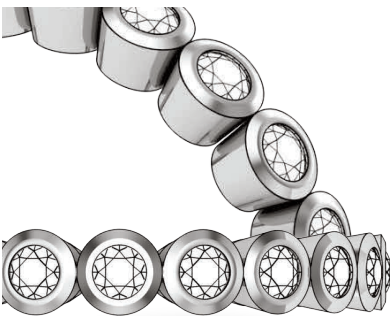
Scalloped



Fishtail



Pavé



Bezel



Gypsy/Flush