



# SENDER VAN STANDS

## PODIUM - STAGE - GRANDSTAND



Thank you for buying one of our new VAN STANDS. The system is modular so you can adapt and grow your transportation system. The Stands are made from STRONG and DURABLE 18 mm Phenolic Plywood. We use Stainless Steel Bolts and Screws. The Drawers have slow closures

- You can remove the stands from the Drawer Unit!
- You can adjust the distance between bikes!
- You can adjust the stands to the width of tyre!
- You can add more stands to your Unit!
- You can easily secure the Unit to the Van!
- You can easily add additional strapping to secure your bikes to the stands!

What we cannot do is offer specific advice on each and every van. There are too many variations and so we must leave it to your judgement to check the unit will work in your van, secure the Units to your van and MAKE SURE the stands are properly adjusted to hold your bike in transit!

We are always happy to speak with our customers and we will help where possible – please email [support@sender-ramps.com](mailto:support@sender-ramps.com)

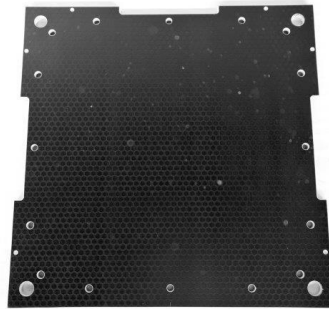
### ASSEMBLY TOOLS

- 1 x 6 mm Hex Allen Key
- 1 x POZI 2 Driver Bit
- 1 x TX25 Driver Bit
- 1 x Drill Driver and 1 x Normal Pozi 2 Driver
- 1 x Roll Tape
- 2 x 17 mm Spanners
- 1 x 600 Quick Clamp or bigger
- 1 x Tape Measure
- 1 x 4 mm Drill Bit

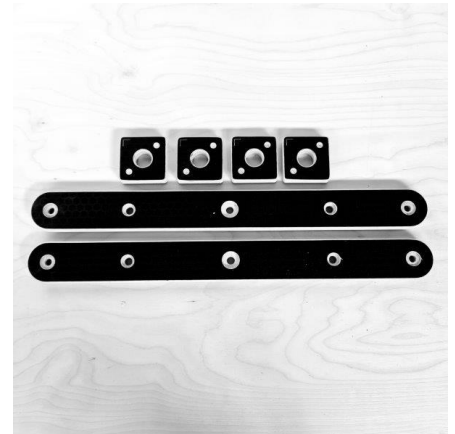
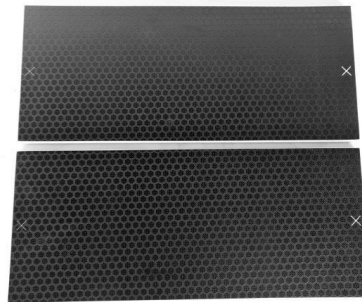
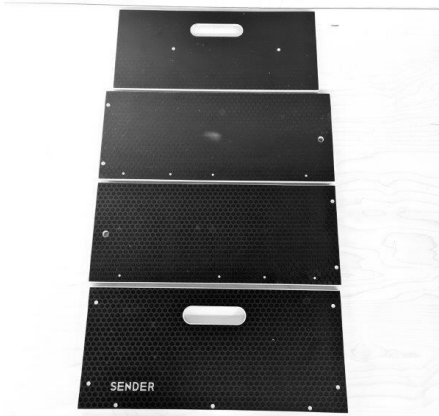
Please make sure you protect your work surfaces and wear appropriate PPE.

# THE ASSEMBLY OF PODIUM - STAGES AND GRANDSTANDS ARE VERY SIMILAR! HERE WE DESCRIBE THE PODIUM.

## COMPONENTS



UNIT SIDES AND BACK – UNIT TOP OR BOTTOM – UNIT TOP OR BOTTOM



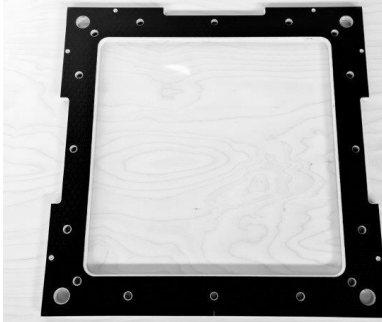
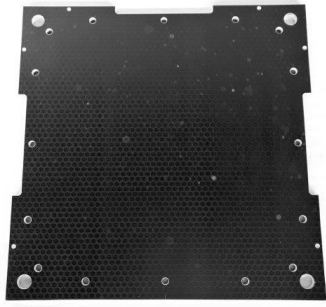
DRAWER FRONT BACK AND SIDES – DRAWER DIVIDERS – RAILS AND RAIL MOUNT BLOCKS



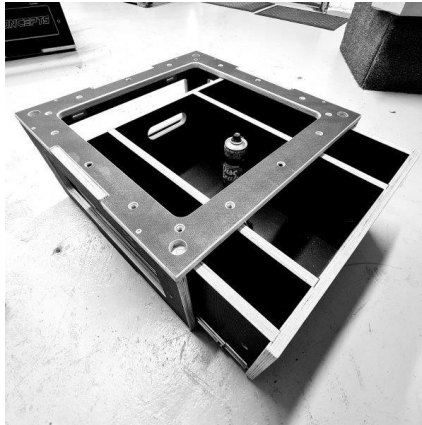
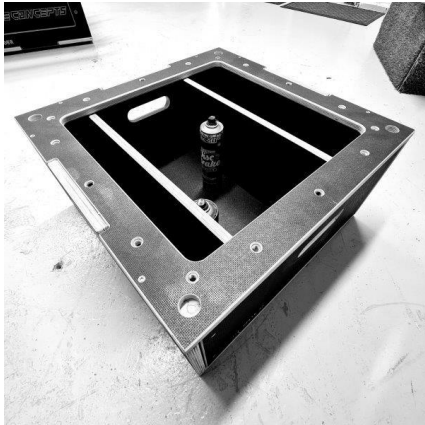
BIKE STANDS

## MAIN CONSIDERATION!

The Unit Top and Bottom PANELS are identical EXCEPT of course one has a whole cut out of the middle. This gives you the opportunity to have an open or closed top. The OPEN top would allow some access to the equipment inside. You would have to negotiate / work around the stands to pull equipment out AND dirt from tyres would fall into the open box but some may prefer this solution?



The images below show the **Open Top variation**



**HOWEVER! MOST PEOPLE WILL CHOOSE THE CLOSED TOP SOLUTION**

**SEE IMAGE BELOW**



# ASSEMBLING THE PODIUM 600 and STAGE 900 UNITS WITH A CLOSED TOP

## STAGE 1:

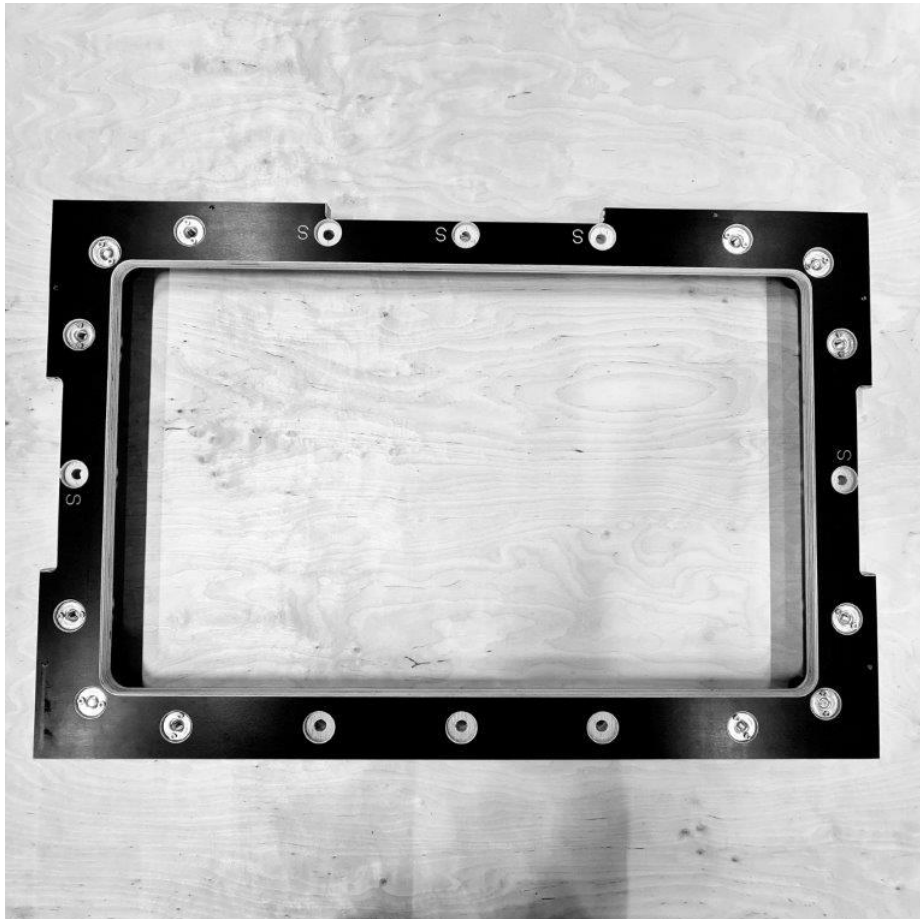
Take the BOTTOM Section of your Unit. The Panel with the Hole! Place Large T Nuts into the corner holes AND each hole either side! DO NOT place Small T nuts into the centre hole of each edge! Leave these BLANK. Use 12 T Nuts in total.

## BELOW ARE IMAGES OF THE 600 PODIUM BASE PANEL - T NUT LAYOUT



## BELOW ARE IMAGES OF THE 900 PODIUM BASE PANEL - T NUT LAYOUT

Take the BOTTOM Section of your Unit. Place Large T Nuts into the corner holes AND each hole either side! **DO NOT** place Small T nuts into the locations marked S! AND the 3 CENTRAL HOLES on the long edge with no notch! Leave these BLANK. Use 12 T Nuts in total.

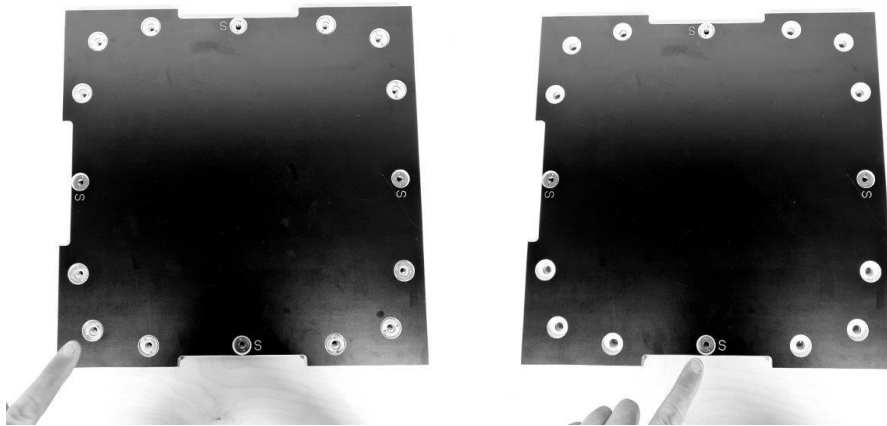


The screws should pull the T Nuts Flush and LEVEL and the screws should not protrude above the surface. You can check with a block.

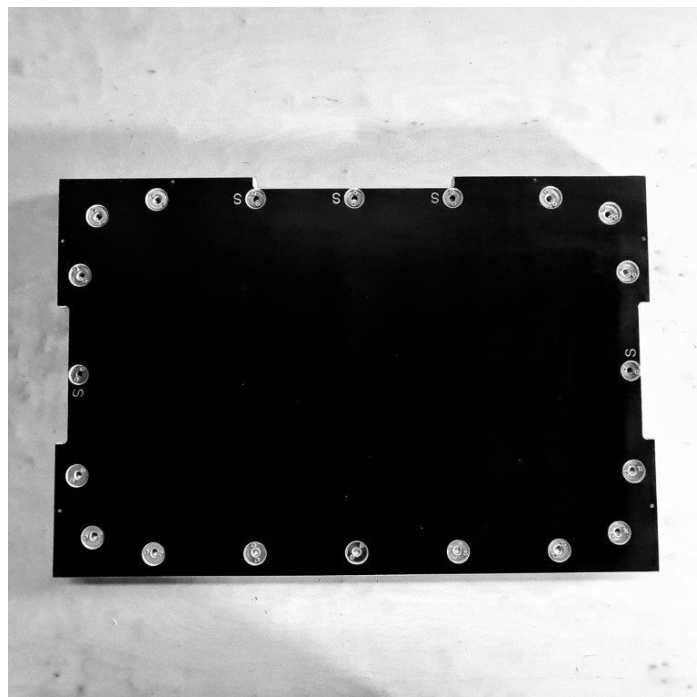


## STAGE 2:

Installing T Nuts On the TOP OF THE **PODIUM 600** place Large T Nuts in the same holes as Stage 1 (Corners and holes either side). This time use the 4 x Small T nuts and place these in the centre holes along each edge as indicated below. All holes should be filled with T Nuts – Total 16.



Installing T Nuts on the TOP of the **STAGE 900** place Large T Nuts in the same holes as Stage 1 (Corners and holes either side). This time use the 5 x Small T nuts and place these in the holes marked S! Place 3 Large T nuts into the holes in the Long Edge with no notch! All holes should be filled with T Nuts – Total 20



### STAGE 3:

Take the Unit Side and Back Panels with the windows. Turn them over (Shiny side up). Place 3 Large T Nuts into the holes (1 on each Panel). These T nuts and the opposing hole allow you to bolt PODIUMS together to create a GRANDSTAND.

Next we will Install the DRAWER RAILS. Extend the narrow end section



A small, long black handle will appear when the first section is FULLY extended. Push this handle flush with the side and pull gently to release the narrow section.



Turn the Rail over and line one of them up with the DOUBLE holes on the shiny inside face of the Side Panels. Look through the TWO Holes and line them up with the marker points on the plywood. Extend the rails slowly to expose and access more fixing points.



Use the CIRCLED holes in the rails NOT THE OVALS. There are 7 Screw points on each rail. Some are hidden behind the rail sections. Before fixing make sure you have located them all and they are all lined up.



**STAGE 4:**

Take the Base of the Unit. Line the components as shown below. Make sure that the components are orientated correctly so the Drawer Rails can open OUT of the end of the UNIT. In the IMAGE BOTTOM LEFT you will see the STRAP POINTS indicated. These are at the TOP of the Unit! The rails are at the bottom of the unit. Stand the components up on top of the base panel using the base panel as a guide and clamp the sides together close to the back panel so you can still access the fixing screw points.

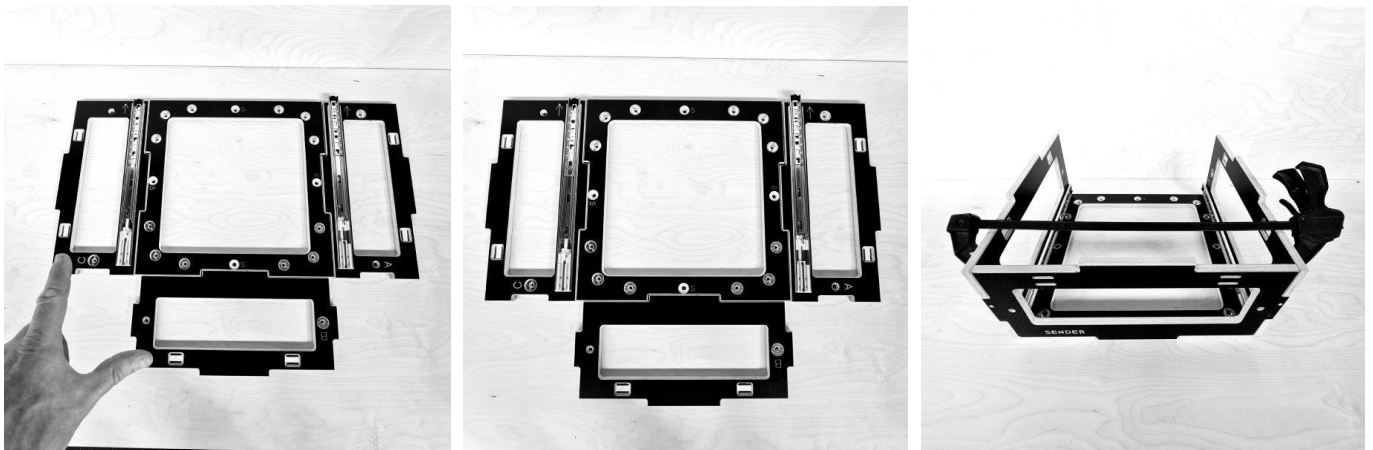
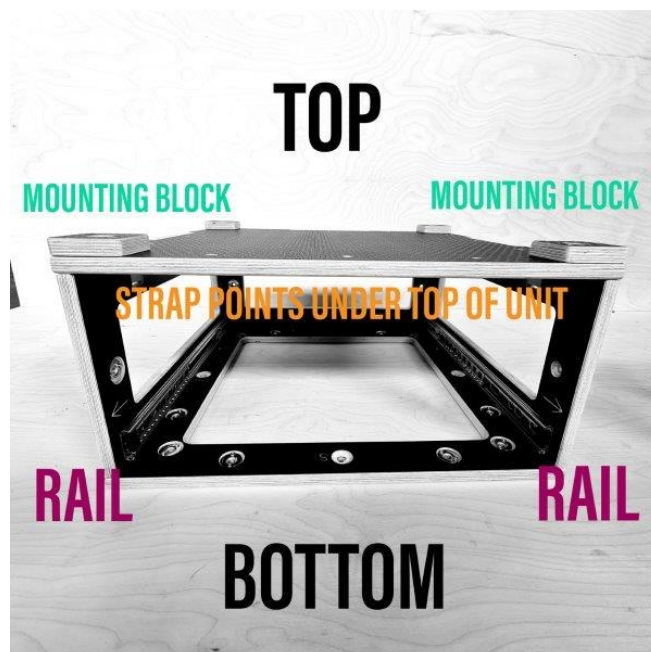


IMAGE BELOW SHOWS THE RAILS AND STRAP POINTS IN RELATION TO THE TOP AND BOTTOM OF UNITS



## STAGE 5:

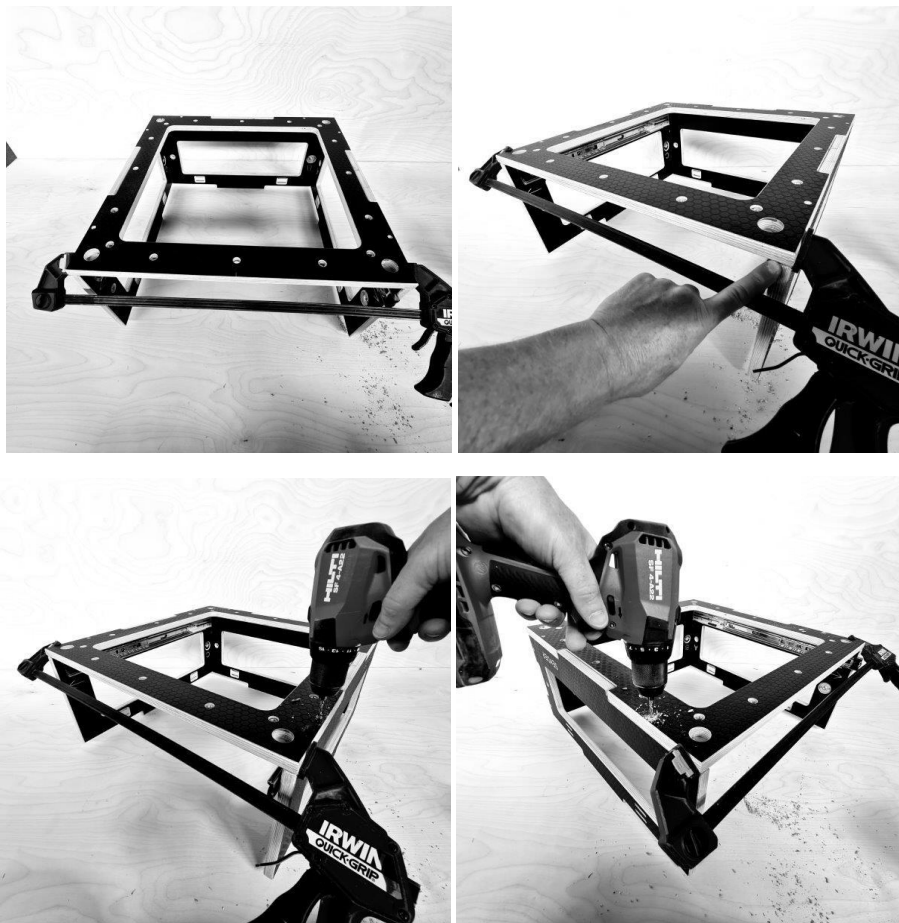
Hold the sides and back panel together making sure all the components are flush and aligned. Drill through the 3 x marker points and then secure the parts with 3 x TX25 Screws – REPEAT on the other side.

YOU MUST ALWAYS PRE DRILL the screw holes OR YOU WILL SPLIT THE PLYWOOD! ALL HOLES SHOULD BE 4 mm x 50 mm DEEP.



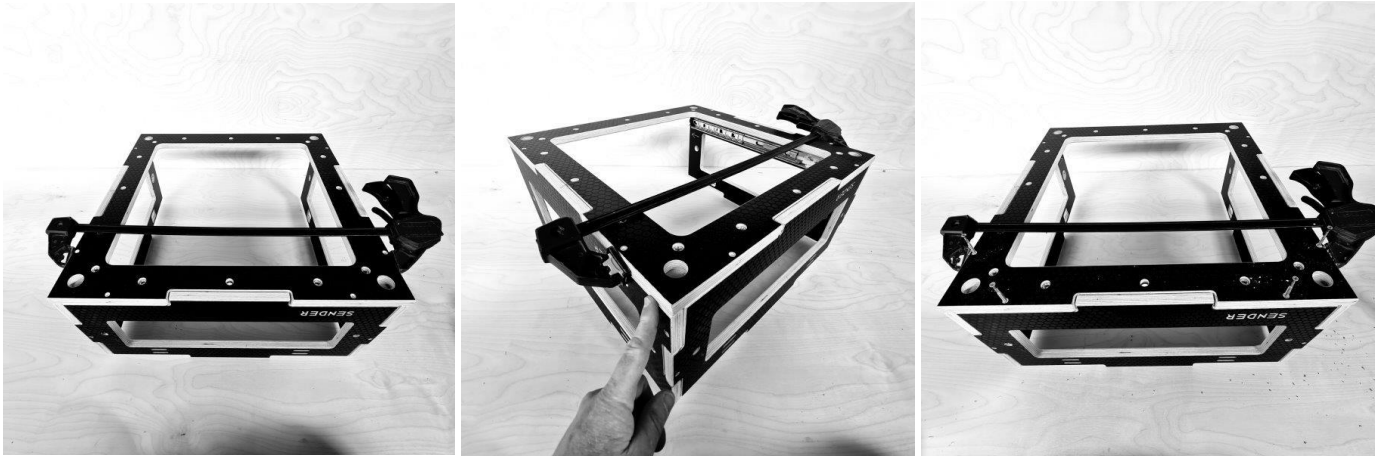
## STAGE 6:

Turn the structure over so the Base Panel is now on the TOP. YOU MUST MAKE SURE AT THIS STAGE that the Base Panel is orientated so that the EXTRA LARGE POCKETS face UP. The Large T Nuts should be on the inside of the Unit!





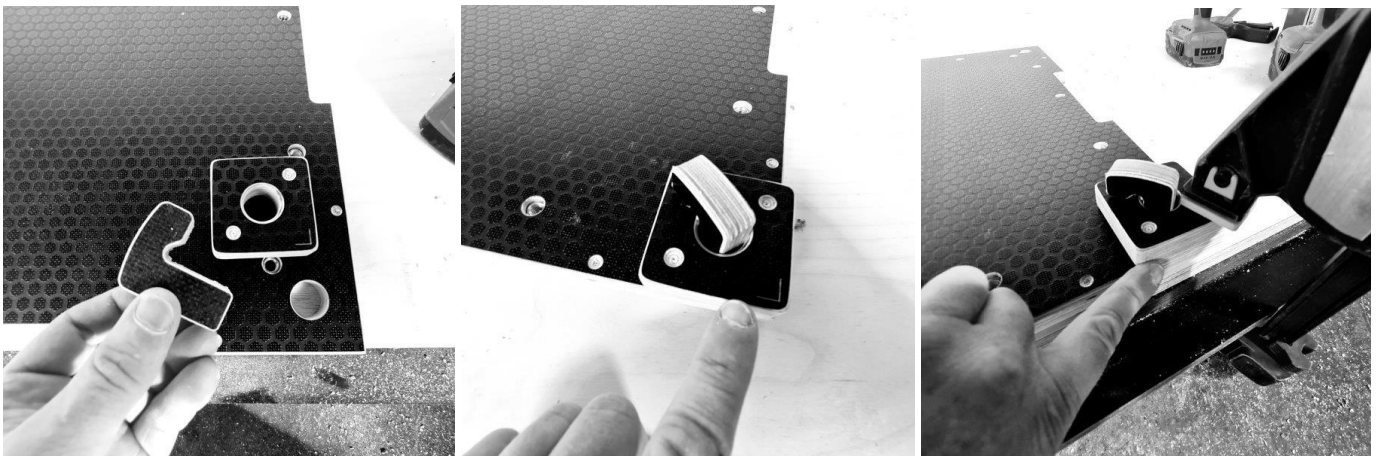
Use a clamp to hold the components. Before drilling make sure they are aligned and flush. Secure BOTH sides of the open end first. Turn the structure – remove and replace the clamp. Check alignment then drill and screw 4 more points.



## STAGE 7: IMPORTANT NOTE!

### **INSTALL THE BLOCKS BEFORE SECURING THE TOP TO THE SIDES**

Take the Top Panel and 4 Rail Mounting Blocks. You also need the INSTALL FINGER. Use the finger to locate, hold and secure the Rail Mounting Blocks in the corners of the Top Panel. The finger goes through the Mounting block and into the EXTRA large pocket in the Top Panel.



The Mounting Blocks have a V indicator. This V points to the corner of the Top Panel. Clamp the Block to the Top Panel. Take your drill bit and a piece of tape. Use the tape to mark the depth of hole you need to drill through the blocks. This is the same length as the 4 x 30 mm Screw. Secure each block with 2 x 4 x 30 mm Screws. STAINLESS STEEL IS SOFT - APPLY CONSTANT PRESSURE TO PREVENT ROUNDING THE SCREW HEADS!

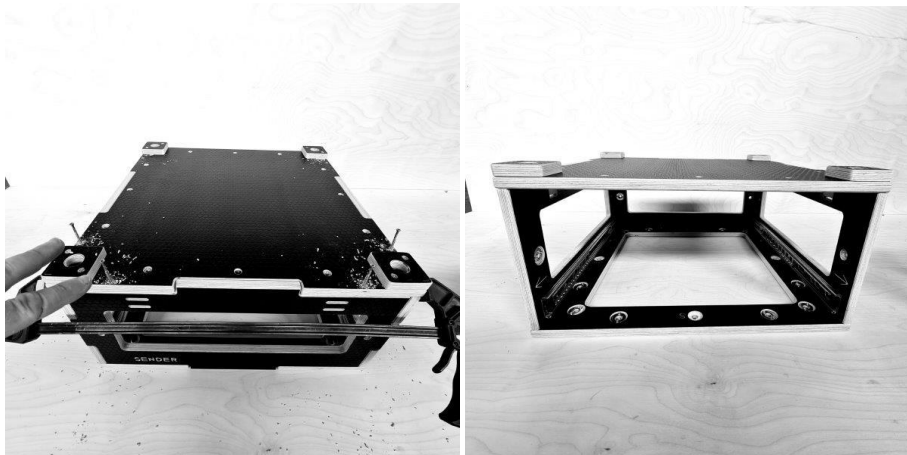


## STAGE 8:

Place the Top Panel with Mounting Blocks onto the structure. Use a clamp to align and hold the top panel. Secure the Top on both sides of the OPENING FIRST



Turn the Structure around. Align, clamp, drill 50 mm deep hole and then secure with 4 x TX25 Screws.



## OPTIONAL - STAGE 9:

This stage is OPTIONAL because you may prefer to sit your VAN STAND flush with the Van Floor! The feet will raise the Van Stands. These feet may coincide with other rails / features on the van floor. Turn the Structure / Unit over so you can see the base panel. You need 4 x Small Tilting Feet, 4 washers and 4 Nuts. Wind the nuts to the base of the thread on the small feet and place a washer on top.



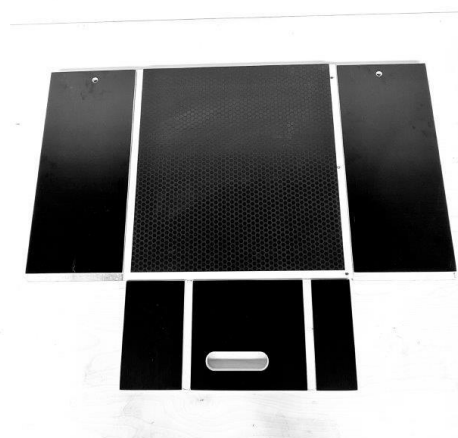
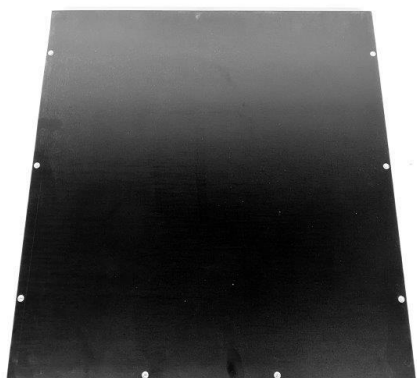
There are three locations / options on the Base Panel where you can place the feet. This may help you miss floor features / rails. The closer to the centre the feet are located the more likely the Unit is to TIP. Wind the feet into the chosen T Nuts by finger first. Tighten the nuts using a 17 mm Spanner. You may wish to use thread lock. It is better to lift the Unit than drag it!



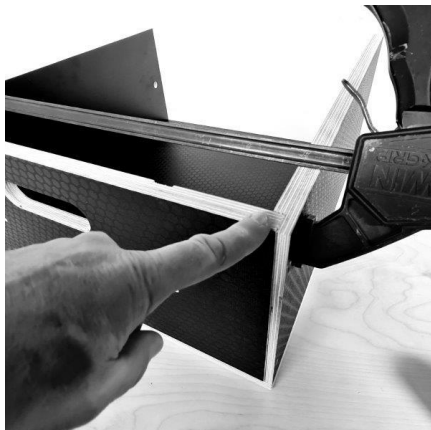
## DRAWER CONSTRUCTION

### STAGE 10:

You will need the Drawer Base – Drawer Sides – Back Plate and Front Plate. Turn the Base over so the screw marker points are facing down. The Shiny faces should all be inside! The Side panels have a hole at one end. Lay the components out as shown below. Stand them up and clamp securely checking for alignment.



**WARNING! LOOK AT THE OUTSIDE FACE of the side panels.** The small Screw Marker points (ALONG ONE OF THE LONG EDGES) should be nearest the base! These are the Drawer RAIL screw points.



Take the Drawer front and place this onto the Drawer Sides and Base. The slots will help locate this component. Hold the components with a clamp. Check for alignment. There are 2 TX25 Screw Points on the left and two on the right. DO NOT use the 3 No Bottom screw points at this stage.



Carefully turn the Drawer over so you can see the bottom of the Drawer. Align / square this panel. Then drill through all the points and secure with TX25 Screws.



Finally stand the drawer on the BACK PANEL so you can easily drill through the FRONT of the DRAWER along the bottom edge and secure with 3 x TX25 Screws

## STAGE II:

Installing the Dividers. These have been designed so you have a space for Spray Cans. A central space for a helmet and the right section for shoes. You can leave them all out if you prefer 1 Large space.



The Dividers can be secured through the BACK PANEL. Drill through the two marker points and secure with TX25 Screws.



## **STAGE 12: PLEASE SEE 12.1 IF YOU HAVE A PRE ASSEMBLED UNIT!**

Installing the Drawer Rails. Align the Rail with the screw marker points. The hole nearest the open end of the rail has a larger hole. You will have 2 larger screws to fit this position. Secure the rest of the rail with small screws. Repeat on the other side.



Extend the Rails in the Main Unit. You will need help to install the drawer without the risk of damaging the Drawer, Unit and Rail! Hold the extended rail. Lift the drawer and slide the Drawer Rail onto the Unit rail. Push the drawer into the Unit EQUALLY. IMPORTANT: Please push the drawer all the way into Unit and pull it back out. You may need to do this a couple of times to engage the SOFT CLOSERS!

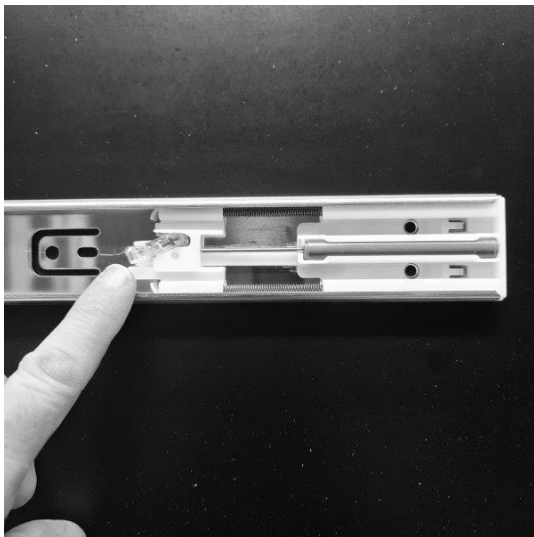




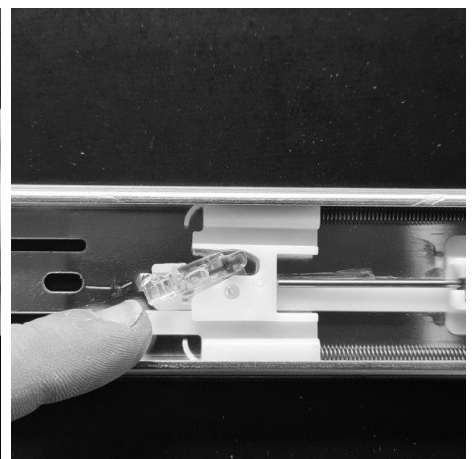
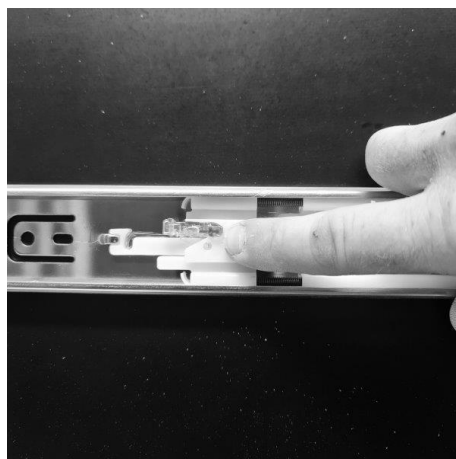
## STAGE 12.1:

Installing an Assembled Drawer into an Assembled Unit with RETRACTED RAILS. This EXTRA Stage will help if you have purchased an Assembled Van Stand which has had the drawers removed for shipping. In order to protect the Drawer Rails! (Otherwise they protrude! for shipping) we have to RELEASE the SOFT CLOSE Mechanism. You will need to RE-ARM the mechanism which is easy to do.

**RELEASING THE SOFT CLOSE MECHANISM FOR TRANSIT:** Push the lever up and the mechanism will retract / close.



**RE-ARM THE SOFT CLOSE MECHANISM TO FIT THE DRAWERS:** From the RETRACTED position you will see the slot into which the Lever must return to and catch. Push the Mechanism FORWARD until the lever drops into the SLOT! Install / Fit your drawer as described in **STAGE 12**

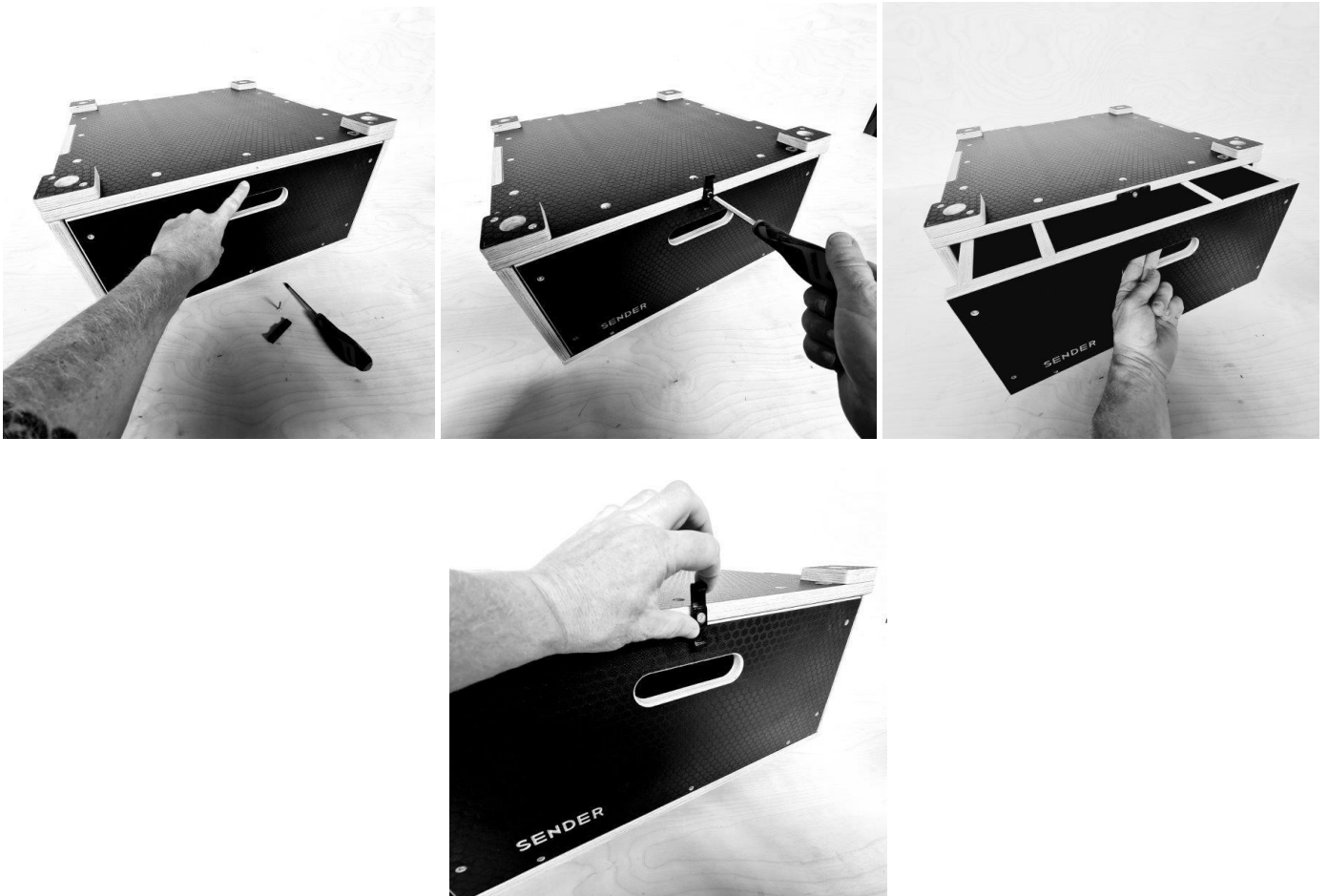


## STAGE 13:

Installing the DRAWER CATCH. When the Drawer is loaded it can come out on its rails. The catch will prevent this happening. ON the TOP of the unit there is a small feint line indicating the middle of the Unit. Drill a 4 x 30 mm deep hole in the CENTRE of the plywood immediately inline / below this marker line. YOU ARE DRILLING INTO THE END GRAIN! NOT THE SURFACE.



Place a 4 x 30 mm Screw through the Catch and secure until the Catch is fixed – CANNOT TURN. Use a screw driver and unwind the screw in SMALL amounts until the catch can rotate. There should be friction so the catch stays in the vertical position. You can readjust over time.



### **VERY IMPORTANT NOTE!**

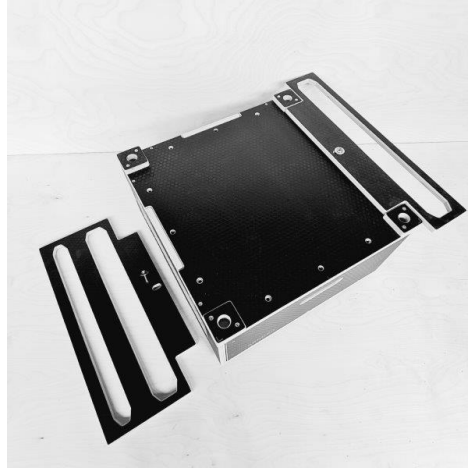
**WHEN THE DRAWER UNIT EXCEEDS ½ OF ITS TRAVEL IT CAN TIP FORWARDS ESPECIALLY IF LOADED. BE PREPARED FOR**

# THIS OR BETTER WE RECOMMEND THAT YOU PROPERLY SECURE THE UNIT TO YOUR VAN! **THEN IT WILL NOT TIP!**

## STAGE 14:

### WHEEL HOLDERS:

There are several types of wheel holder. Single / Double and combinations of MTB and ROAD. They attach quickly and easily to the Main Unit. They can be placed on any face of the Unit. Sit the Holder between the Rail Mounting Blocks. Align the central bolt hole and secure with an M10 x 35 mm Button Head Bolt





## STAGE 15:

### BUILDING YOUR STANDS AND RAILS

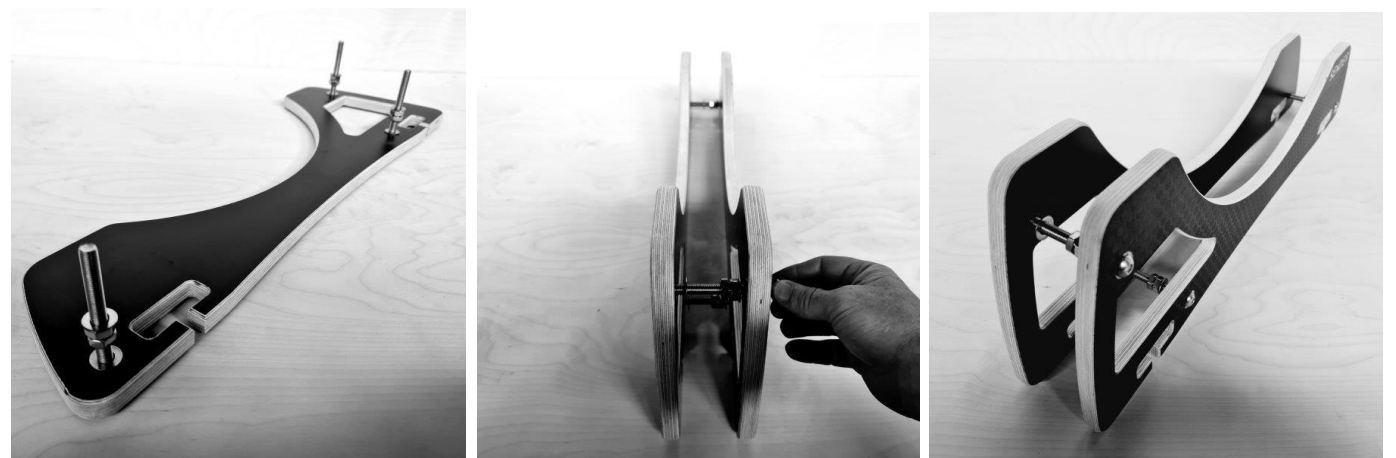
Take your Stand Sides and place 3 T Nuts into the side with the large T Nut Pockets. Secure with 6 Pan head screws.



Your stands can be adjusted for any wheel width. If you have Fat Bike Tyres you may need to purchase additional longer bolts. If you have Race BMX or Road then the bolts supplied will work but you may wish to purchase shorter bolts so they do not protrude so far out the other side of the Stand sides. This is purely cosmetic.



The Bolts are placed through the side of the stand without the T nuts. Place a washer onto the thread then two nuts. You should keep the nuts in the middle of the thread until you have adjusted the stands to the width of your tyre. Place another washer onto the thread. Repeat this in the other two holes. Stand the two sides vertically. Wind the bolts into the T nuts by FINGER – Never with tools as you could easily cross thread the T Nut. NEVER force the bolt.

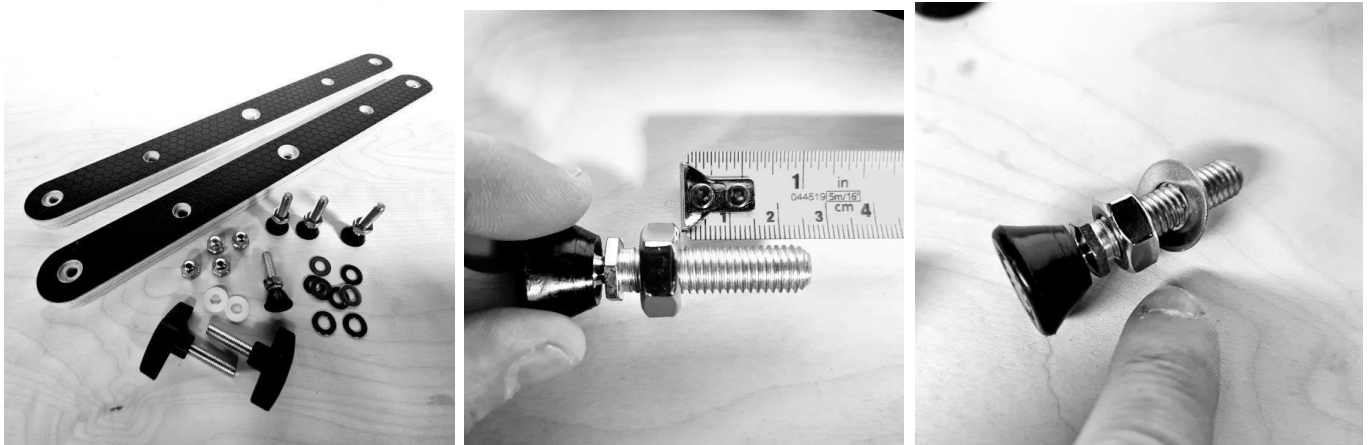


Next measure the width of your tyre. Transfer this size to your stand and adjust the bolts to match this size. At this stage it is handy to have wheel so you can check the fit exactly. The perfect fit is when there is some friction and a firm push is required to seat the tyre. When you are happy wind the nuts out to meet the face of the plywood. Use a 17 mm Spanner to tighten the nuts against the side panels.



## STAGE 16:

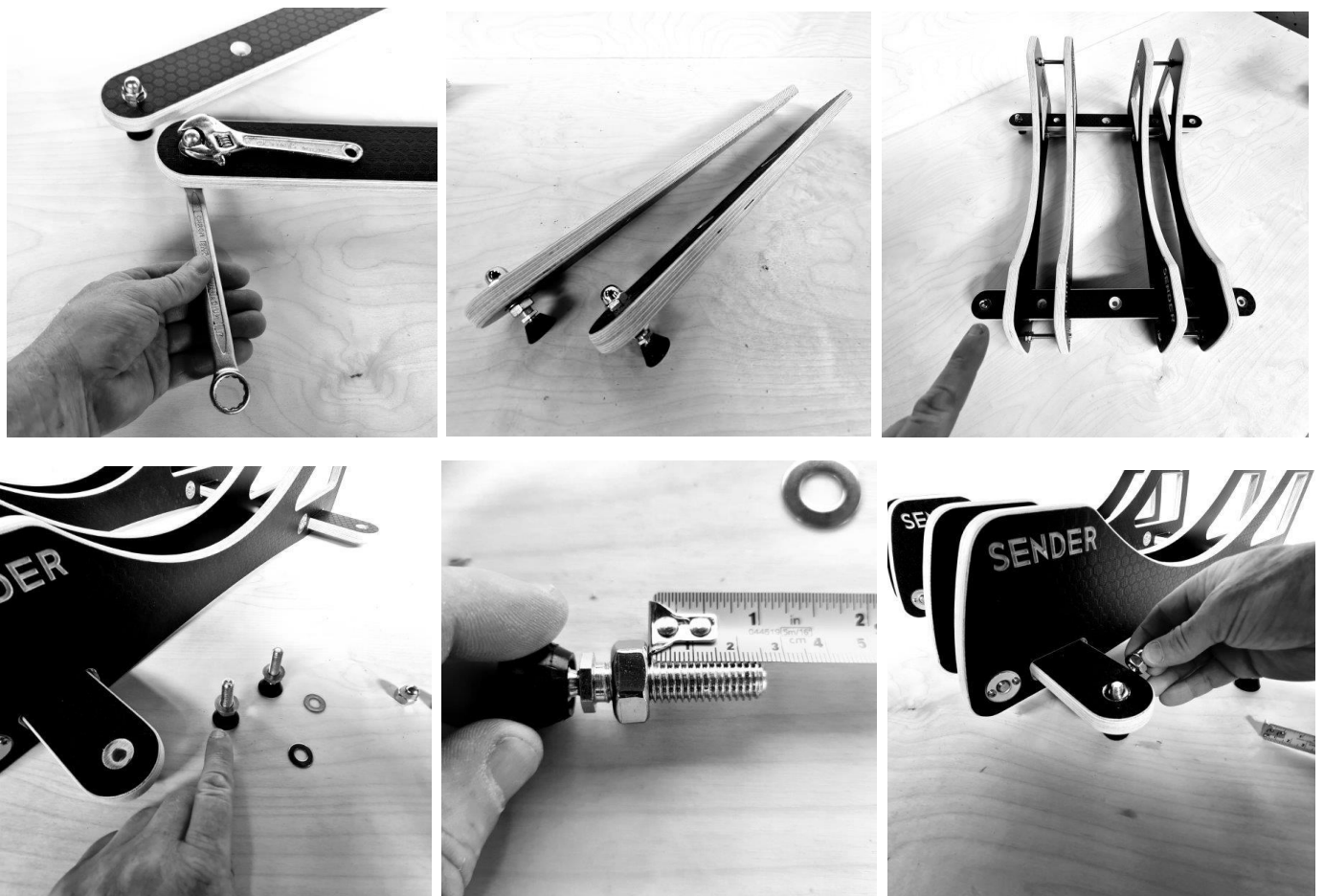
Take one of the long threaded feet. Wind a nut to the bottom of the thread. Use a tape measure and wind the nut back out to 25 mm. Attach a small washer. Repeat the same for all 4 feet.



Place one of these through the end of the rail. Place another washer over the end of the thread and then wind a Dome nut onto the thread until flush with the washer / plywood. Using 2 x 17 mm Spanners tighten the nut and dome nut. For a more permanent fixing you may want to use some thread lock.



Repeat on the second rail. Place the rails through the slots in your Stands. Then repeat the process to attach the last two feet. This will TRAP your Stands on the rails. Remember to tighten the nuts and dome nuts with 17 mm Spanners.

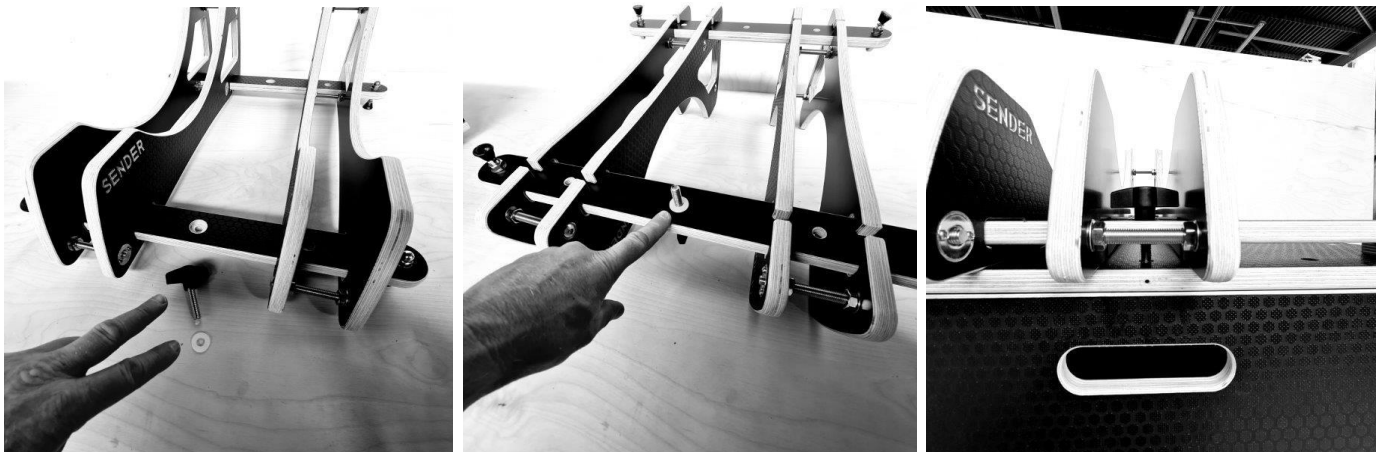




## STAGE 17:

You can now install the Handles / Knobs that secures the Rails to the main Drawer Unit. These are placed in the centre hole on the rail. If you have MTB Tyres you should be able to locate the handle / knob in the middle of the stand! Otherwise there is room either side of the knob.

Place the Knob through the hole in the Top of the RAIL. Use the plastic RETAINER WASHER to hold the Knob to the Rail by pushing this up the thread on the other side of the rail.



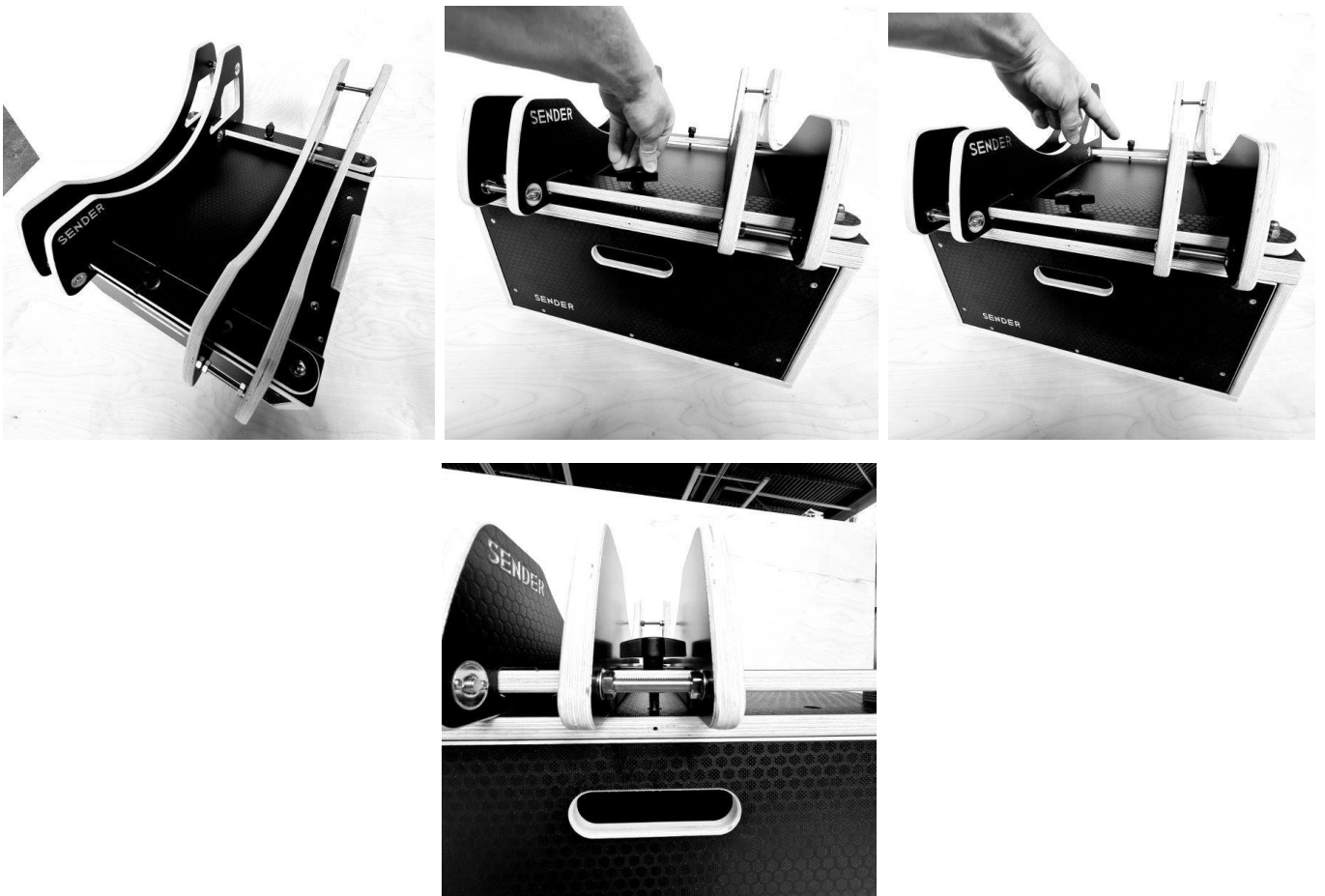
## STAGE 18:

### MOUNTING YOUR STANDS AND RAILS TO THE DRAWER UNIT

Lift the Stands and Rails as ONE Unit and align the end of the rails so they are equal. Place them onto the top of the Drawer Unit so the FEET are over the POCKETS. If they do NOT drop into the pockets immediately try adjusting the TILTING FEET so they are level. Make sure the stands are NOT sitting on the mounting blocks.



Turn the handle / knobs to secure the rail to the Drawer Unit. You can slide the stands on the rails until they are in the correct position for your van and bikes. Once you are happy with the position tighten the knob to trap the stands.



The image above shows the knob in the middle of an MTB sized tyre Stand.

## **A MORE PERMANENT AND SECURE SOLUTION**

Unless you have a 900 Unit these bolts are not supplied but you can get them from us. If you do NOT need to remove the Stands on a regular basis you can fix them to the stand more permanently. Left and Right of the Centre Knob / Handles holes you will find additional holes for M10 x 35 mm Button head bolts. Always place these by finger first to avoid cross threading.

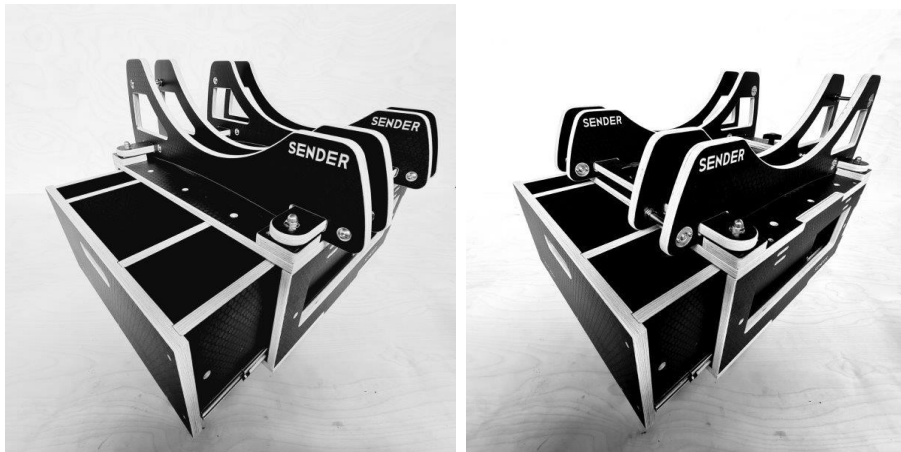


We have designed the stands so you can still slide them over the bolts without removing them. When the position is correct you can then tighten them to fix the stands in place.



## DRAWER UNIT ORIENTATION

The Stands on a 600 Unit are designed so you can rotate the Drawer Unit to have the Drawer open in ANY DIRECTION!



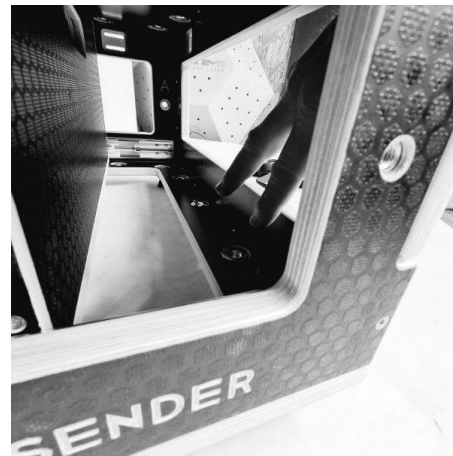
## FIXING YOUR STAND TO YOUR VAN

It is your responsibility to adequately secure the UNIT and STANDS to your van. This can be done with straps or more permanently with screw or bolt fixings. Below you will find a couple of neat / subtle / effective options but many more exist. You can easily remove feet / bolts / T nuts to make a secure interface.

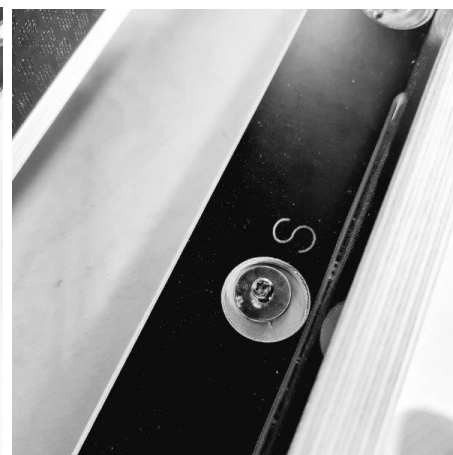
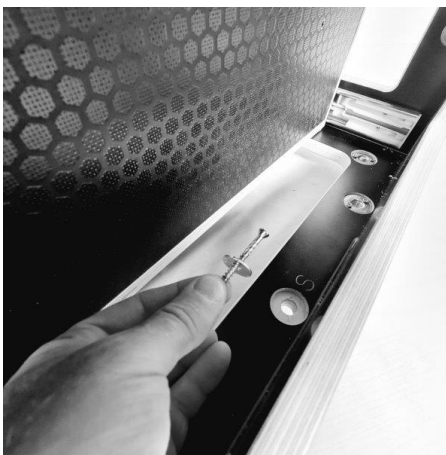
- 1) We have provided 2 STRAP pockets on each side of the Drawer Unit. Straps NOT provided.



- 2) If you remove the drawer OR push the Drawer forward you can access the T Nut holes through the inside of the unit. You can use 1 or more of the 4 small washers provided to screw the Unit into the floor of your van. You may want to flush mount (remove the feet) so the base is in contact with van floor. Screws and Bolts not provided.



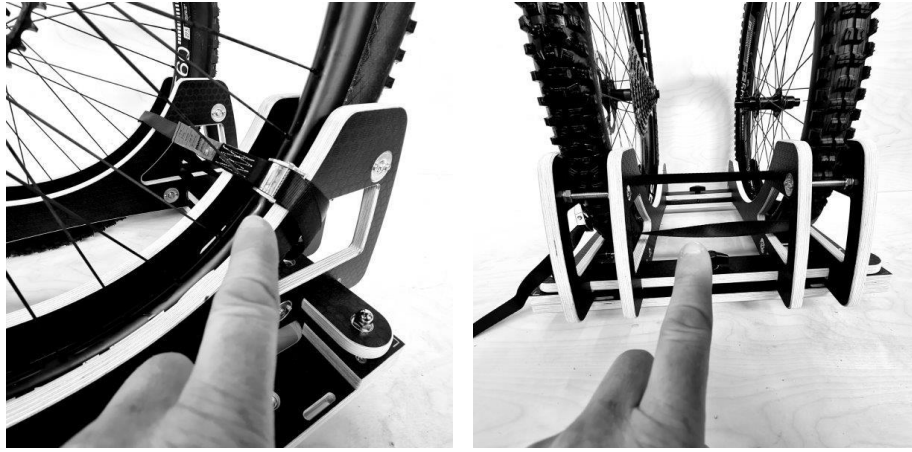
Small Washer and Screw Fixings Solution - Indication of the possible Fixing points inside the Unit



## SECURING YOUR BIKE TO YOUR STANDS

If you have adjusted the Stands correctly so the tyre fits with friction and requires a firm push your bike should NOT require additional strapping. However, in all instances you must decide for yourself and use appropriate and adequate method to hold your bike to the stands.

- 1) Use a Strap (Not provided) Place this through the hole in the stand and then back through the wheels. This will trap the wheel in the stand.



- 2) You can purchase eyebolts from us that fit into the holes on the surface of the Drawer Unit. A Long strap can then be used to thread through and over the top of the wheels. This provides a very secure and stable transportation system! Especially if you are using in a Pick Up.

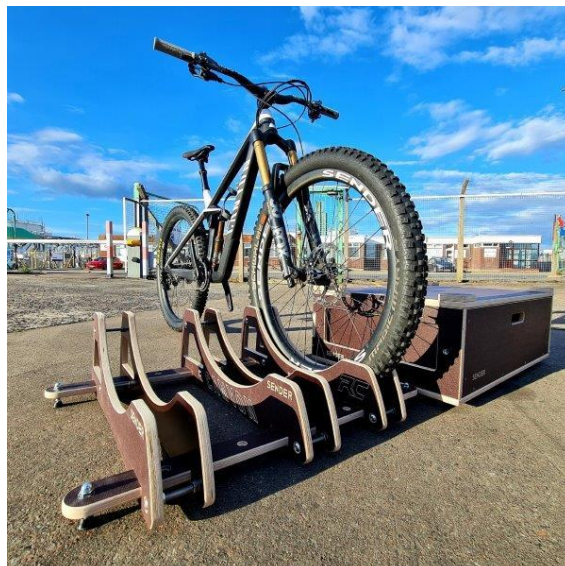


## USING YOUR STAND OUT OF YOUR VAN

Simply unwind the handle / knob and lift you're stand off the Drawer Unit. Place the stands on a flat even surface and make sure that you have an adequate amount of Rail protruding out either side. Place your bike(s) in the stand and TEST stability BEFORE walking away.

We advise checking the FEET to make sure they are tight and you do not lose one.

You can use the stand to DISPLAY – MAINTAIN – WASH your BIKE.





# JOINING UNITS TOGETHER

We have created a system where you can bolt Units together. Unless you purchase a Grandstand then you will need to order more bolts. However, it is quick and easy using the T Nuts and Bolt Holes located in the sides of the Drawer Units! You have two locations in opposition accessed from INSIDE the Drawer Unit. You can mount 2 Podiums together (A Grandstand) side by side with the drawers facing the Rear Door OR the drawers can open to one side with a bike stepping over both. See Images below.



Drawers open to the side with Bike Stepping over Units – Standard join opening towards rear door

## STORAGE AND TRANSPORT MODE

Your VAN STAND can easily be removed at the end of each day like a POD holding all your essential items. Just be careful of the loaded weight as an unloaded stand is at least 25 kgs!



## TREATING YOUR STAND!

We recommend treating any component that will be used outside and get wet. You should treat the cut edges of the stands with a CLEAR preservative. Be aware that even clear preservative can darken the colour of your stand so trial the stain in a less visible location. If you have a COLOURED RAMP you may wish to avoid treating the coloured faces as this is a coloured preservative anyway. NEVER USE VARNISH!

Spray your bolts and T Nuts regularly to make placement and removal easier!

BE AWARE THAT THE RAILS AND STANDS COULD SWELL AND JAM IF LEFT IN THE RAIN AND NOT DRIED OR MAINTAINED PROPERLY!

## REPLACEMENT PARTS!

You can get replacement parts by contacting us at [support@sender-ramps.com](mailto:support@sender-ramps.com) We can supply Nuts / Bolts / Washers / New Plywood Components

## IF YOU NEED HELP PLEASE - GET IN TOUCH!

If you need help please ask! 00 44 7719 309214 – [scott@sender-ramps.com](mailto:scott@sender-ramps.com)



