

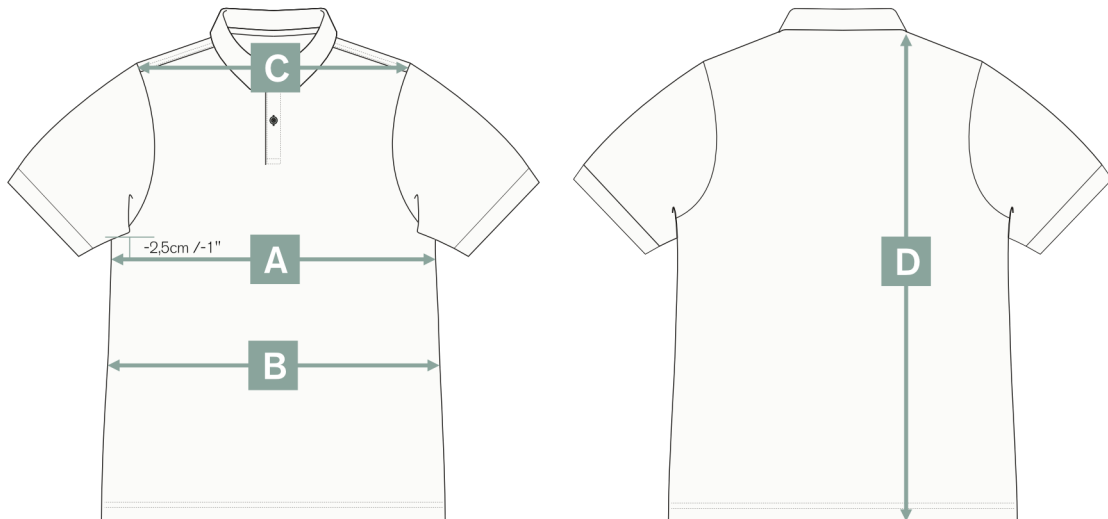
Measurement charts

- POLO -

Compare a garment you own with our size charts and use the instructions below.
Lay your garment flat when you measure. Please note actual garment sizes can vary +/- 1 cm.

How to measure

- A CHEST:** Measure straight across, 2.5 cm (1 in.) below where the bottom of the sleeve meets the body.
- B WAIST:** Measure straight across at the narrowest part of the garment. If no waist is defined, measure halfway between the armpit and the bottom of the polo.
- C SHOULDER TO SHOULDER:** Measure straight across the front of the garment from the outside edge of one shoulder (at the top of the sleeve) to the other.
- D LENGTH:** Measure straight down from the highest point of the shoulder to the bottom.



		XS		S		M		L		XL		XXL	
		cm	inches	cm	inches	cm	inches	cm	inches	cm	inches	cm	inches
A	CHEST	45	17.7	47.5	18.7	50	19.7	52	20.5	54.5	21.5	58	22.8
B	WAIST	42	16.5	46	18.1	48.5	19.1	51	20.1	52.5	20.7	58	22.8
C	SHOULDER TO SHOULDER	39	15.4	41	16.1	43	16.9	44	17.3	46	18.1	47.5	18.7
D	LENGTH	67	26.4	69	27.2	70	27.6	71	28	72.5	28.5	74.5	29.3