



W205 C63 CATCH CAN SYSTEM



C63S W205 CATCH CAN SYSTEM INSTALLATION INSTRUCTIONS

All steps below are repeated for both sides unless noted otherwise.

Thank you so much for purchasing our ZAC Catch Cans! These are designed to suit both standard and upgraded turbos.

PLEASE TAG US ON @zacmotorsport #zacmotorsport

Unboxing, installing, pics and vids

WE LOVE IT AND APPRECIATE IT!

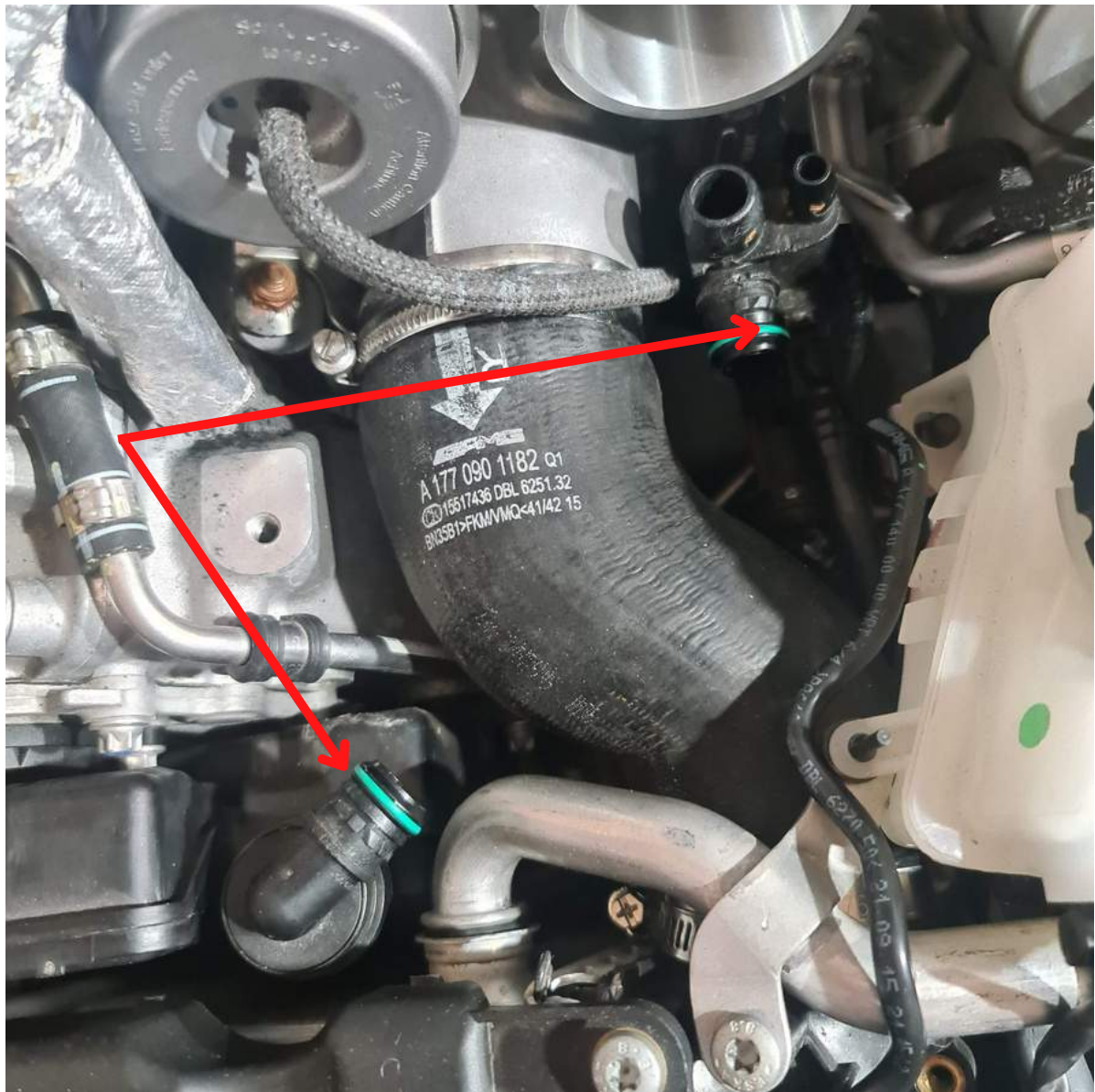
PLEASE REVIEW INSTRUCTIONS BEFORE COMMENCING
INSTALLATION

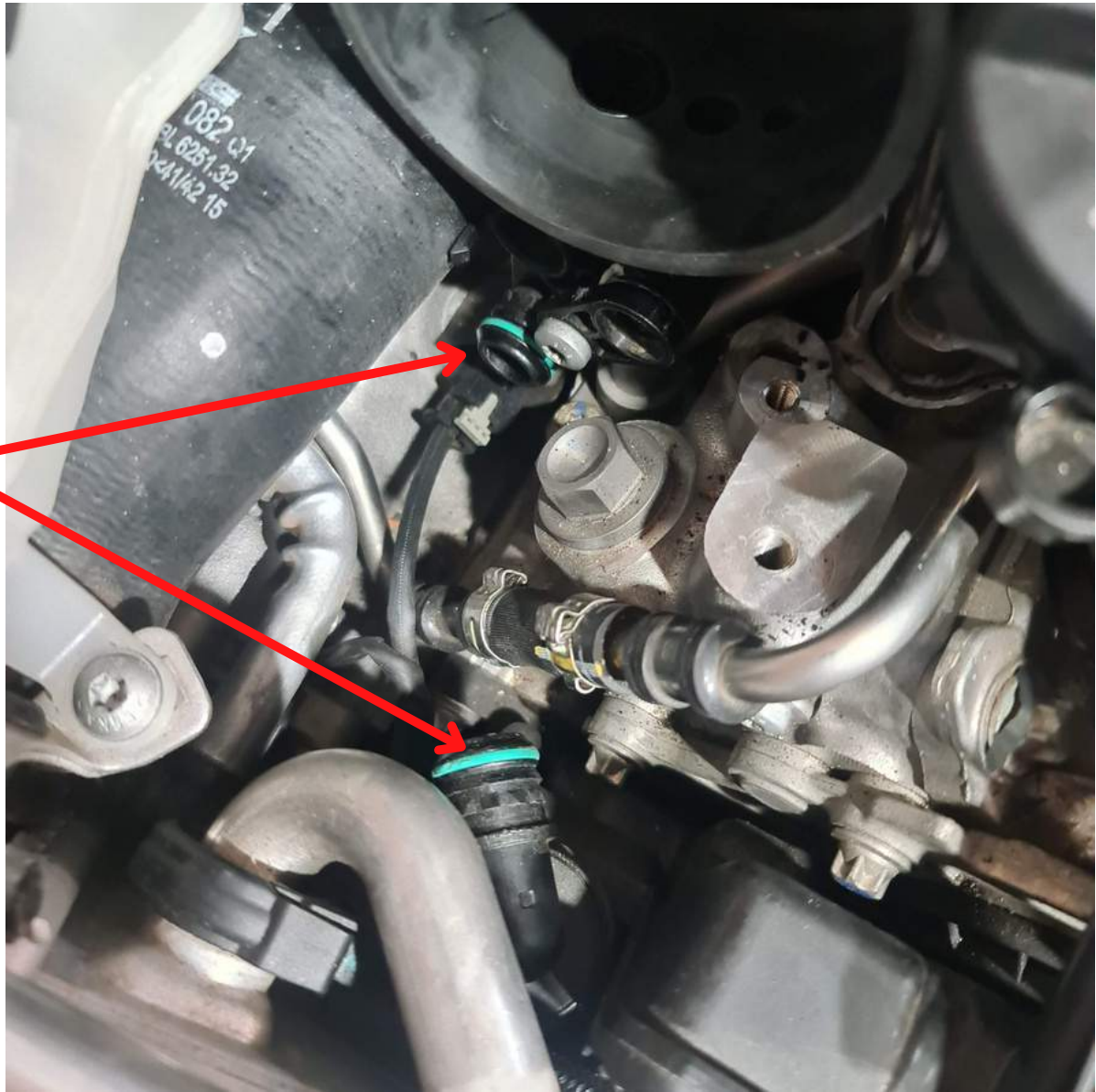
ALL REFERENCES TO HANDEDNESS ARE IN THE DIRECTION OF
TRAVEL AS THOUGH YOU ARE DRIVING. NOT AS YOU ARE
STANDING IN FRONT OF THE ENGINE BAY LOOKING BACK.
PLEASE ENSURE ALL PARTS ARE CLEAN AND FREE OF FOREIGN
OBJECTS!

1. Open Hood, then lock the car. make sure keys are at least 10 meters away from the vehicle.
2. First we remove the airboxes, stock or aftermarket..



3. Remove the Pipes connecting the PCV outlet to the adaptor ports, this requires some light heat from a hair dryer or heat gun, and a small blade screwdriver or pick, be gentle and work your way around each end. The pipes have small hooks on them that grip the barbs of the port and PCV.





4. Now push the blanking plugs onto the adaptor ports, note, these DO NOT require grub screws (even though there is provision for some in the first batch of catch cans released)



5. The PCV adaptors DO require a grub screw (supplied in the hose fittings kit), partially screw the grub screw in, we suggest a small drop of loctite blue to secure the grub screw. Find the hose AN nipple and screw this into the port adaptor as well (pictured)

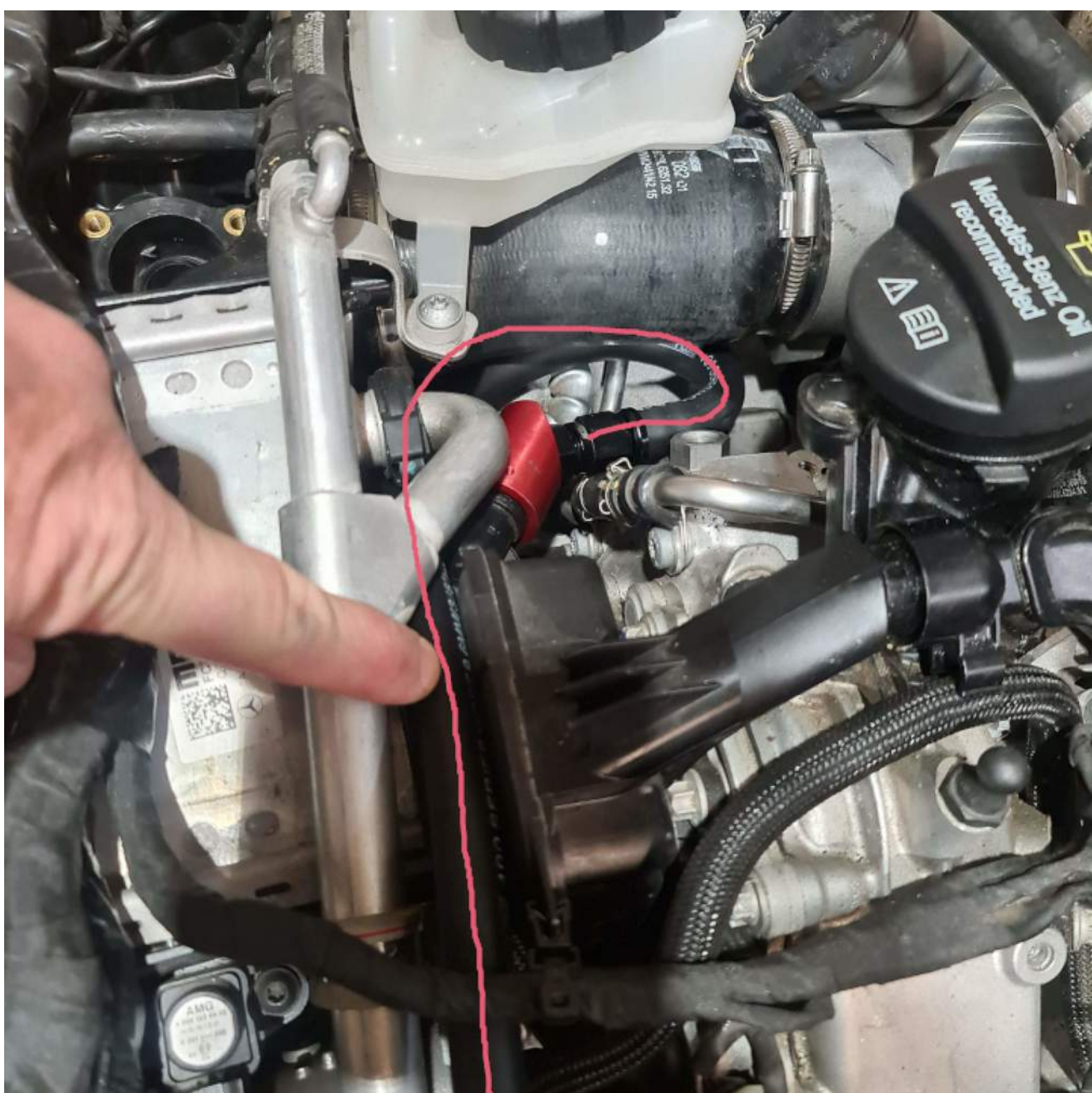


6.. Now push the PCV adaptor onto the PCV port, tighten the grub screw until the port adaptor is difficult to turn, then back off the grub screw half a turn. NOTE the grub screw is not supposed to stop the adaptor turning, it is just there to prevent the adaptor blowing off the port.

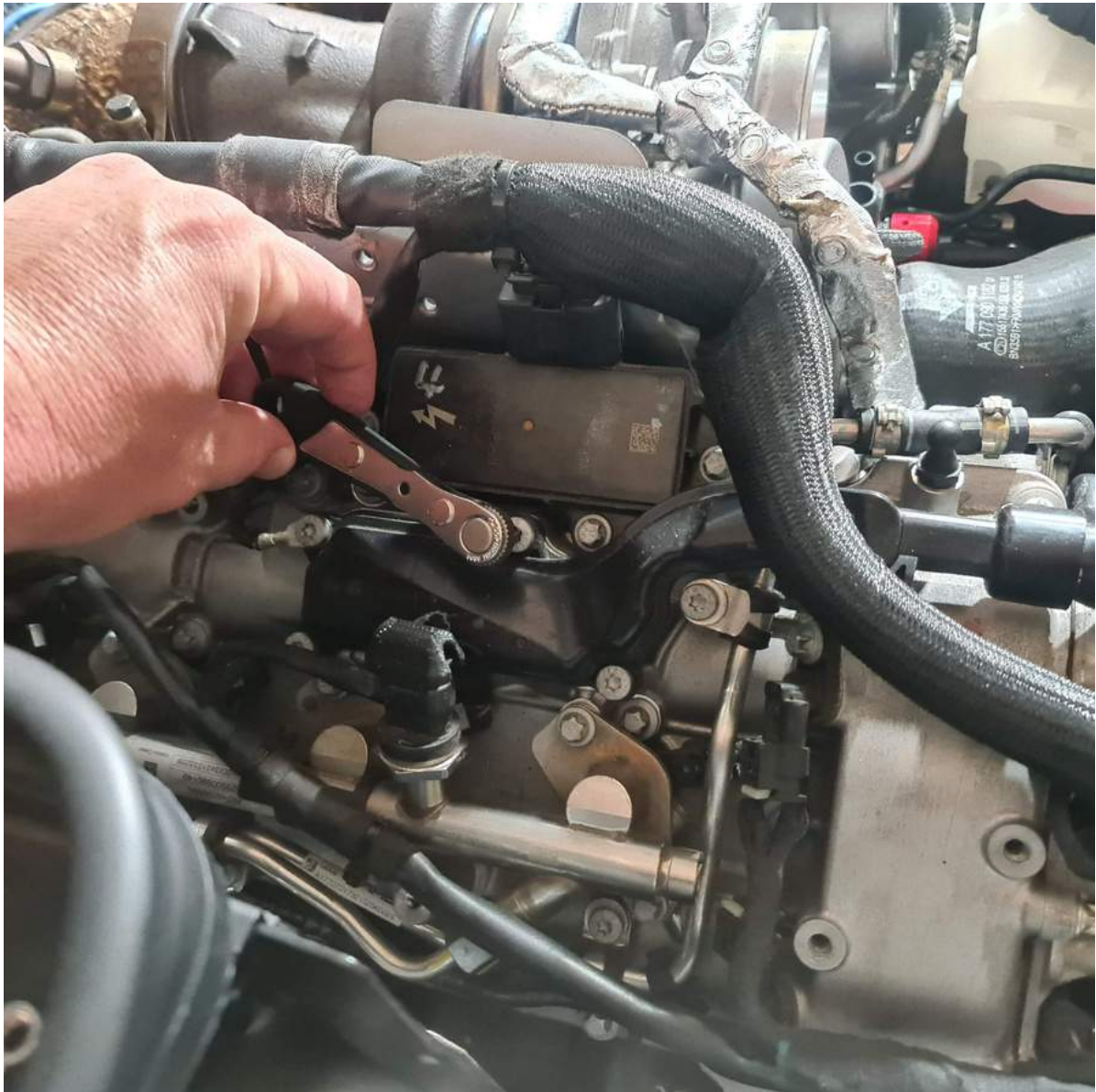


7. Now it is time to run the hoses. IMPORTANT! do not put the hose ends onto the hose until the hoses are in place. The ends are larger, the space is tight!

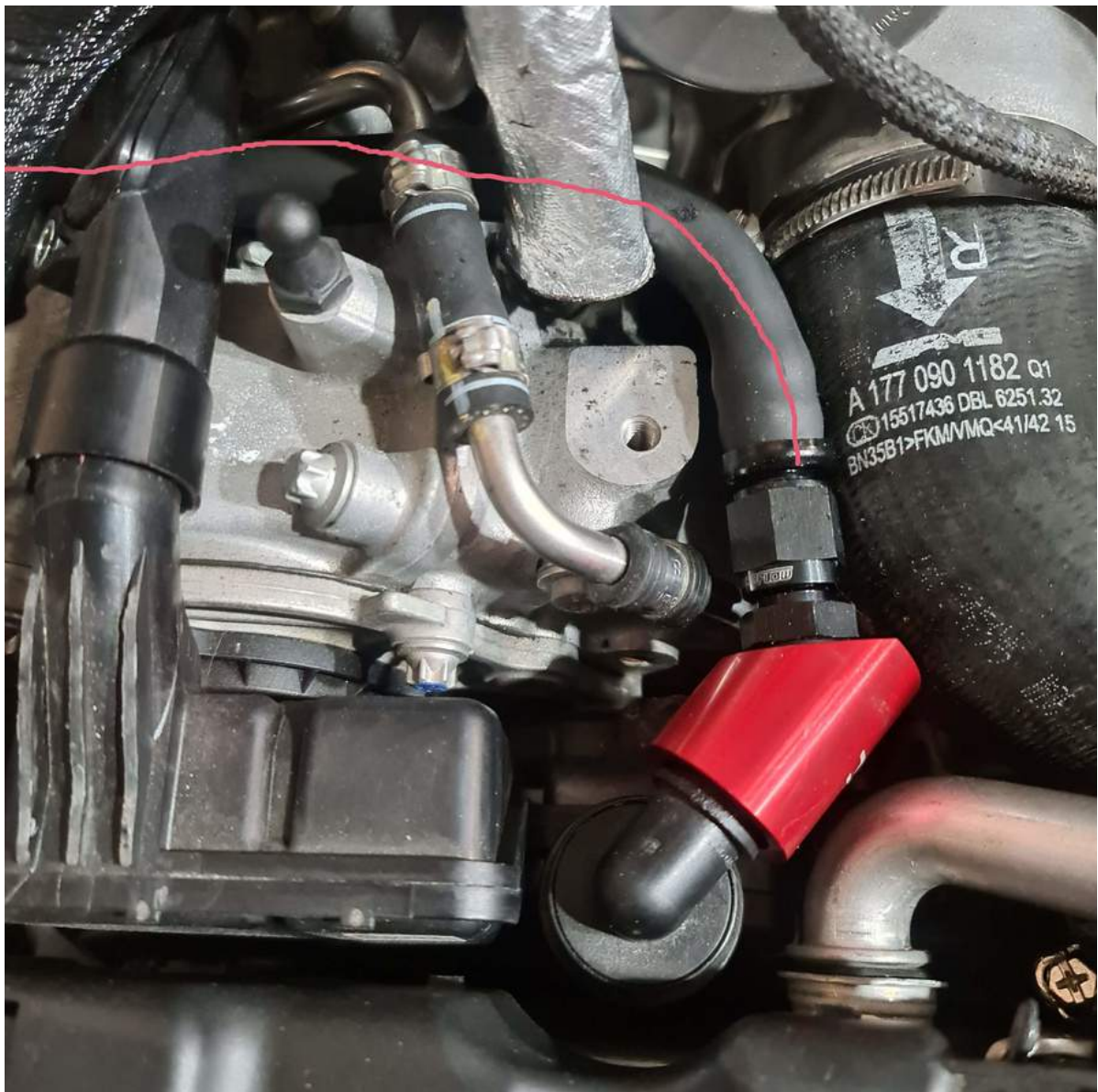
Left side routing is under the intercooler return line, loop around under the turbo outlet hose.

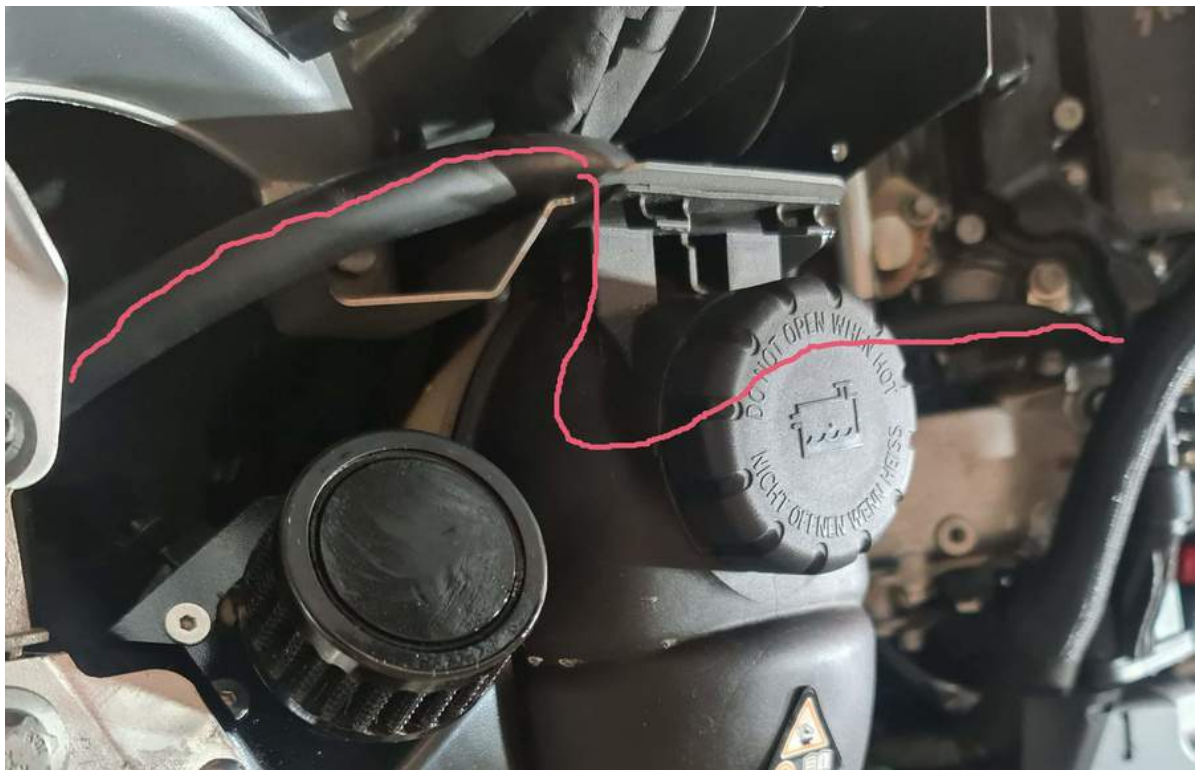
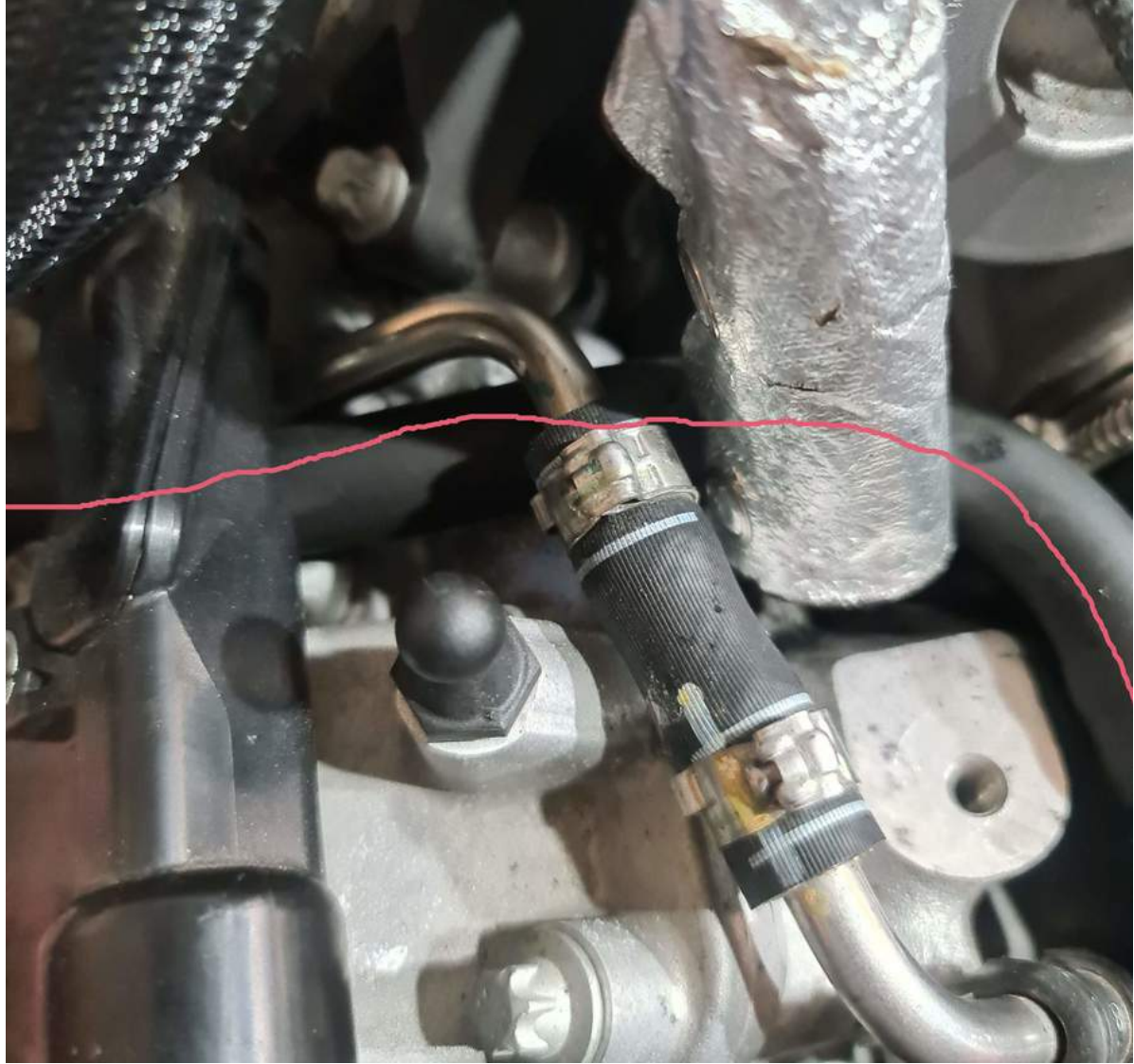


8. Right side hose goes underneath the cam cover breather, make sure the area is free from debris, then carefully remove the screws from the cover.



9...This is how the RH breather hose routes. under the cam cover breather, tucked down beside the fuel line on top of the cam cover. back up toward the radiator support panel behind the engine overflow bottle.





10.. remove the filters from their boxes, you don't need to use the hose clamps supplied. Locate the filter adaptor barb. Push the filter onto the barb.



Clamp not required



11..The C63 catch can does not require the mount supplied with the catch can, remove this mount and replace it with the C63 specific mounts..



12..Screw the filters onto the top of the catch cans



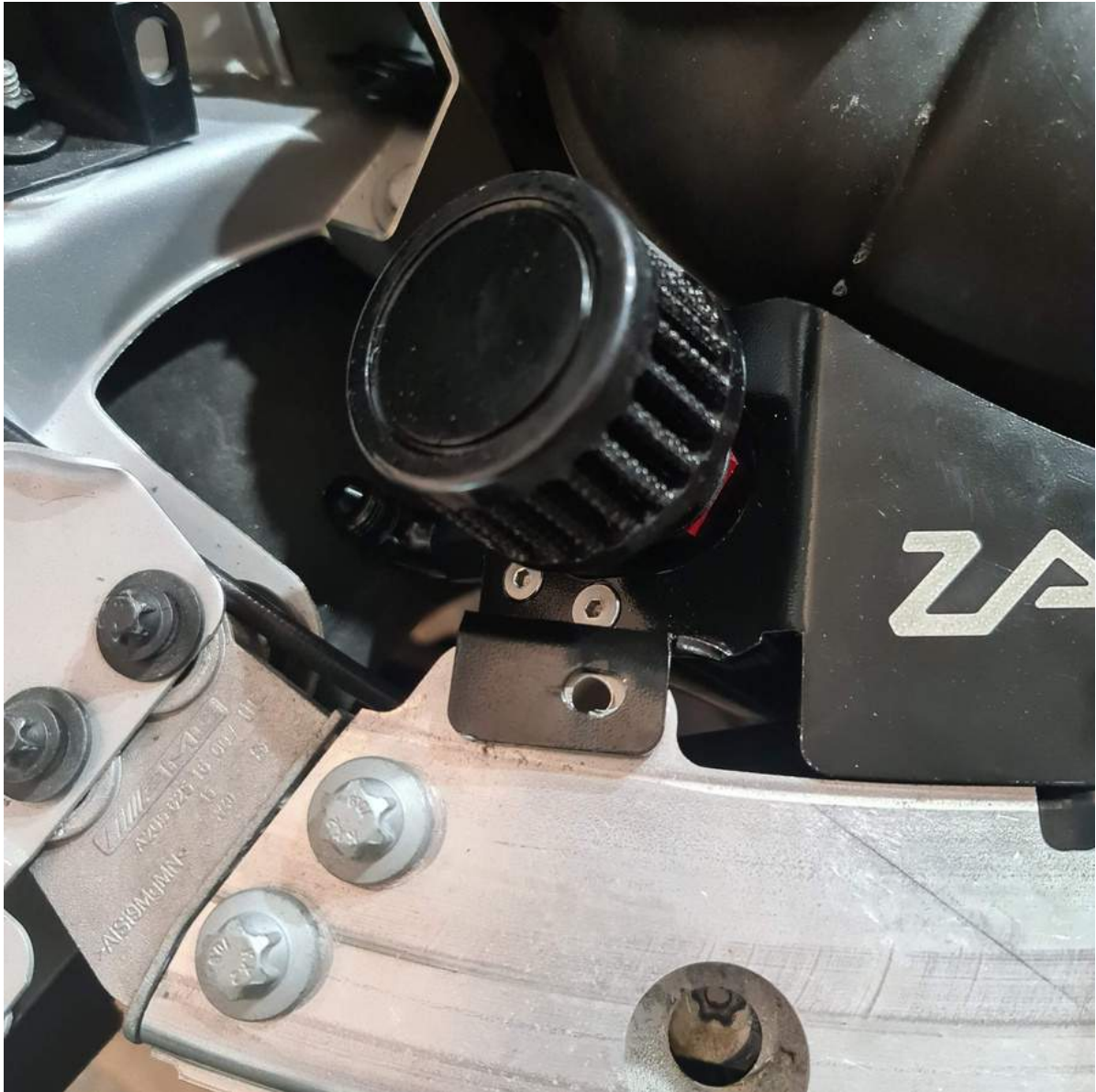
13..The fittings on the catch can to mount the hoses should now be added. First the adaptor nipple, then a 90 degree



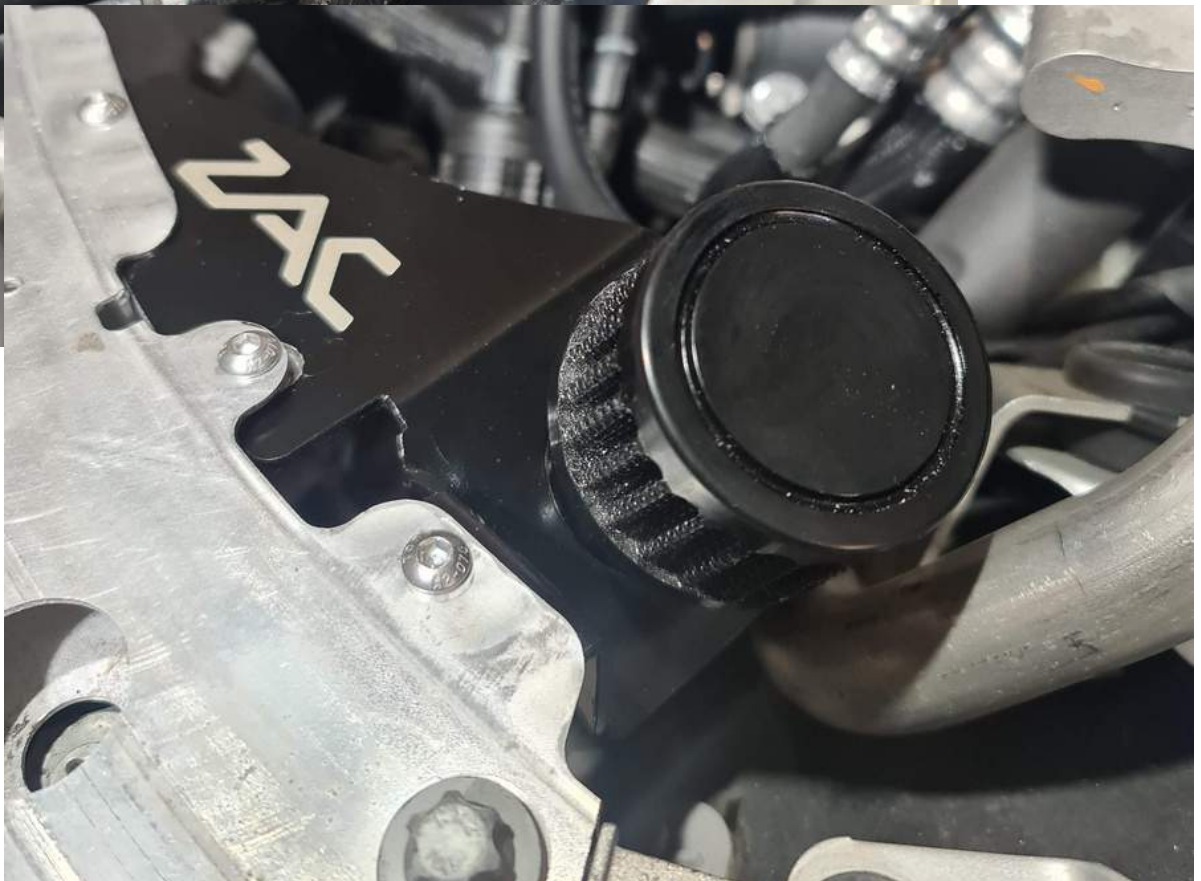
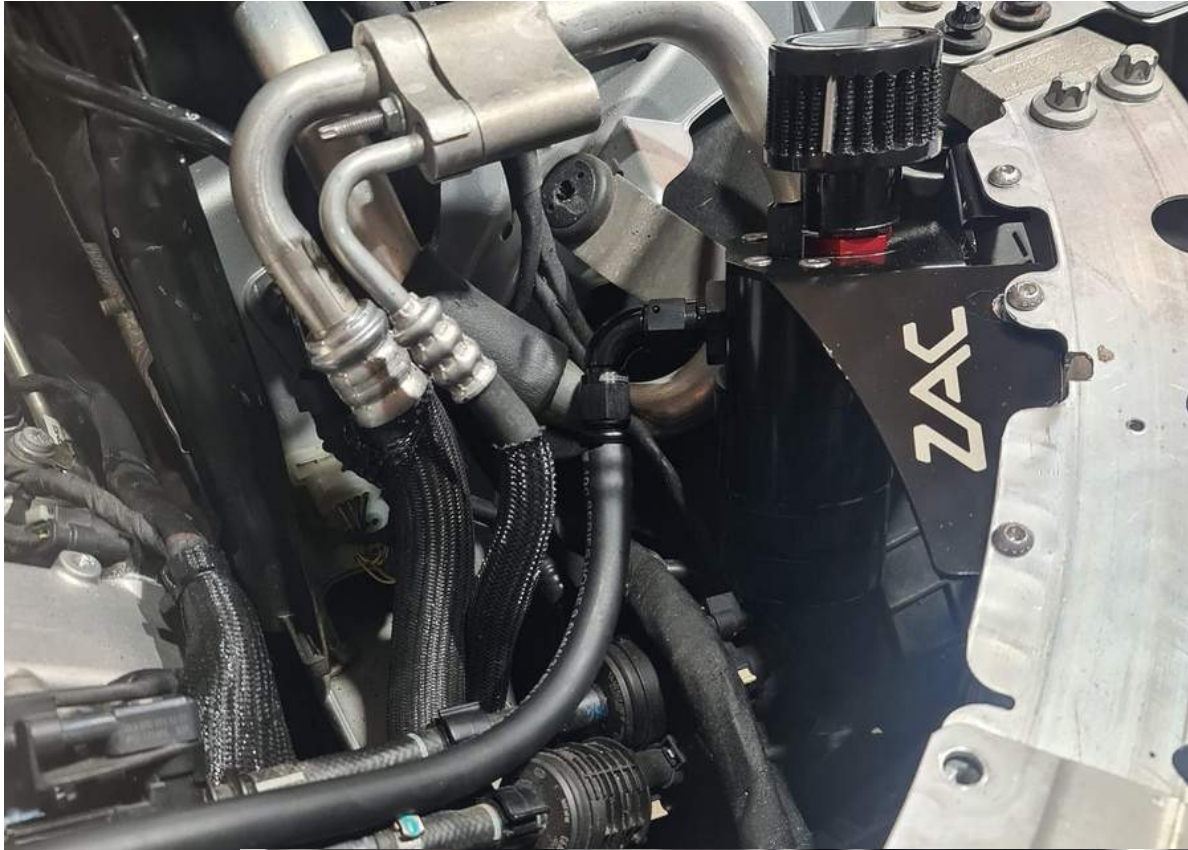
14.To mount the catch cans onto the radiator support panel you need to drill some holes. We have found there are slight variations in this support panel, so the holes you may need to drill may be different from our Aus spec C63 here..

Use the catch cans as a template to mark the hole positions.

Use a 6mm (1/4") drill to make the holes.



15. Use the supplied bolts and nuts to mount the catch cans, **HOT TIP:** install the rear bolts first, then make your way to the front. Using a 10mm ring spanner with a piece of tape on one side helps to keep the nut in place while you screw the bolt in from the top.





16.It is time to push on the hose ends, HOT TIP! YouTube "fitting push lock hose ends" there is quite a lot of tips and info there. Our best suggestion is to use a small amount of petroleum grease, or some hear on the hose ends.



Push lock hose end



Push lock hose end installed

17. Screw the hoses onto the ends, check everything is tight. The catch can installation is complete. You can now reassemble the rest of the car!

