



## W205 C63 INTAKE SYSTEM



# C63S W205 INTAKE SYSTEM INSTALLATION INSTRUCTIONS

All steps below are repeated for both sides unless noted otherwise.  
Thank you so much for purchasing our ZAC intakes! These intakes are designed to suit both standard and upgraded turbos.

PLEASE TAG US ON @zacmotorsport #zacmotorsport

Unboxing, installing, pics and vids  
WE LOVE IT AND APPRECIATE IT!

PLEASE REVIEW INSTRUCTIONS BEFORE COMMENCING  
INSTALLATION

PLEASE ENSURE ALL FILTERS, ADAPTORS & INTAKE TUBES ARE  
CLEAN AND FREE OF FOREIGN OBJECTS!

1. Open Hood, then lock the car. make sure keys are at least 10 meters away from the vehicle.
2. First we remove the stock airboxes... Undo the clamps between the airbox and the turbo



3. Remove the recirculation hose from the fronts of the airbox







4. Using the Torx Wrench (easier if you have a torx bit ratchet) We SUGGEST you remove the hose trumpets. Although this is not essential, it will reduce the possibility of water/debris getting stuck inside.



5. Remove the covers from the rear of the airbox, simply push the clip and pull the cover up.



6.. Remove Harness from the dirty filter sensors, twist to remove the sensors from the airbox.



7..Pull the rear of the airbox up with a firm pull to unclip the airbox from the standoff.





8..Pull the Factory cold air feed tube away from the airbox as you remove the box up and rearward. The cold air feed and the airbox slip apart at the location below..



9.Remove the front clips from the cold air feed, these clips are best removed with a trim tool, or a flat screwdriver. Next unclip the hood release cable, then push the entire unit toward the rear of the car and remove it.





10.. Remove the adaptors. The easiest way is to cut them off as there is glue around the PCV / breather ports, it is possible to use a small pick or screwdriver and work the glue loose, it depends on your patience, and how badly you want to keep the original adaptors.



11..Replace the factory adaptors with ZAC adaptors.

2021 models have a 3 hole PCV/Breather port. Pre 21 has 2 holes.

The 2 hole adaptos (shown below) must be used in conjunction with the supplied plug "ADAP-SPIGOT". You can see it in place to the right in the 3rd photo..



ADAP-SPIGOT





# HEAT SHIELD INSTALLATION

Please check the contents of the package. You should have:

- Pair of heat shields with rubber seals attached
- 2 long standoff posts
- 2 short standoff posts
- 2 rubber O Rings
- 6 bolts, 2 short, 2 medium, 2 long

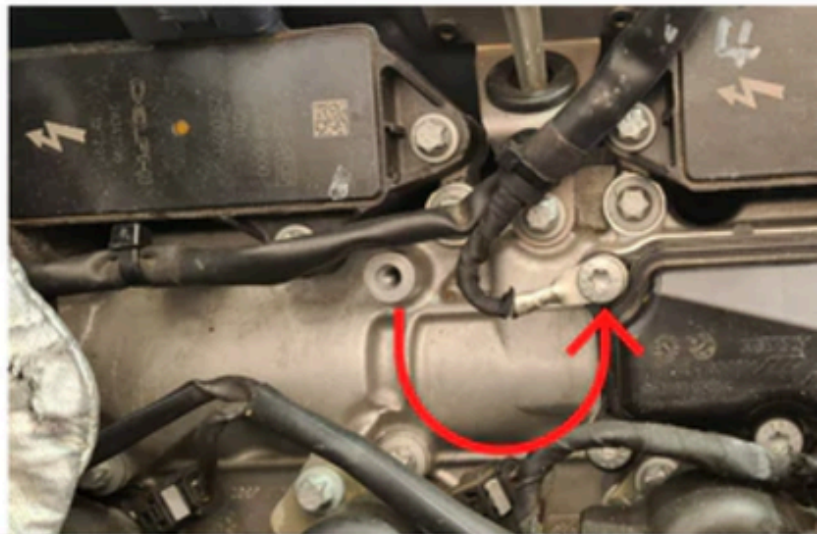


**STEP2:** Remove the bolts from the cam cover, and move the earth wire as shown below, repeat both sides

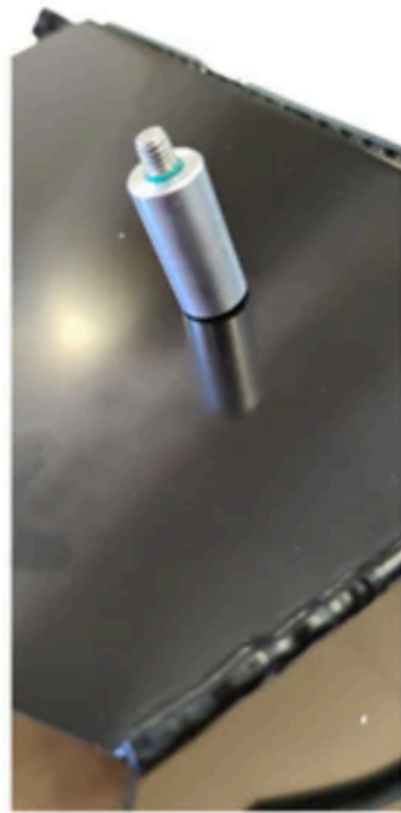
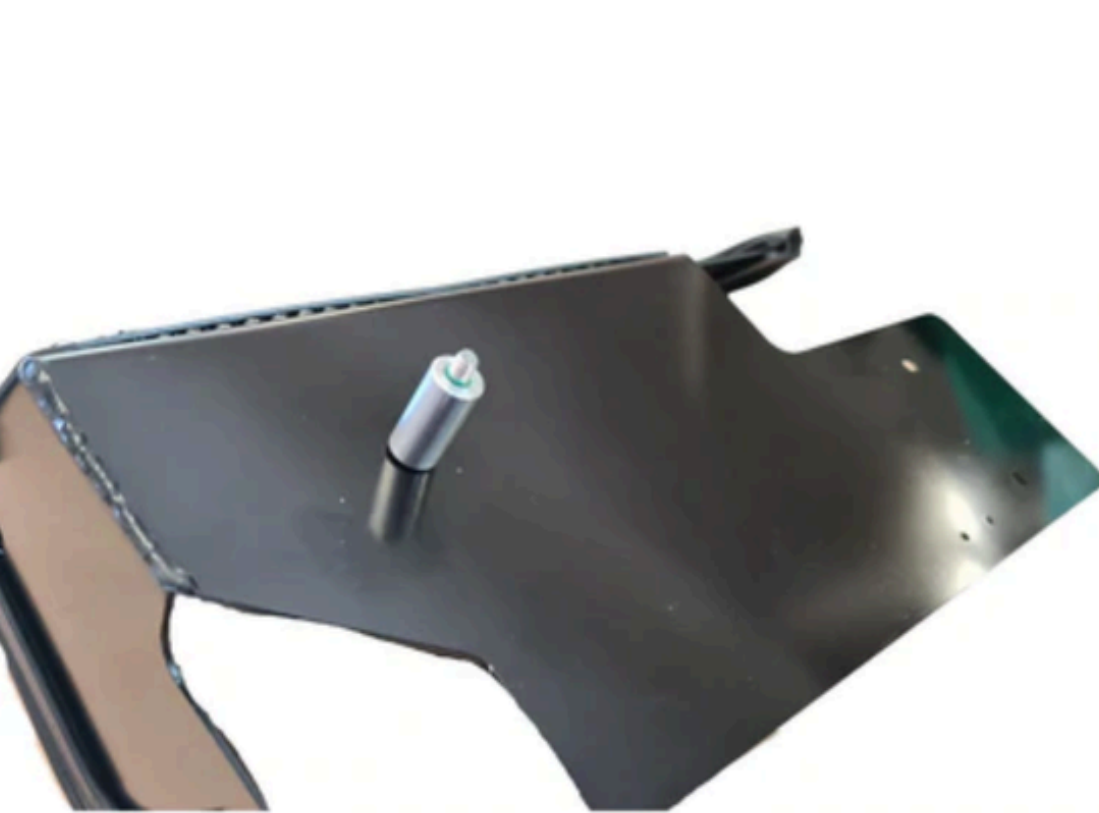


LEFT SIDE (Drivers side USA etc)

RIGHT SIDE (Passenger side USA etc)



**STEP 3:** Place the longest bolt through the rear most mounting hole on each side. slide the long standoff over the bolt, and then roll the O ring over the bolt, use a pick or small screwdriver to move the O ring as far down the thread as possible. (The only purpose of the O ring is to hold the standoff on the bolt for installation)



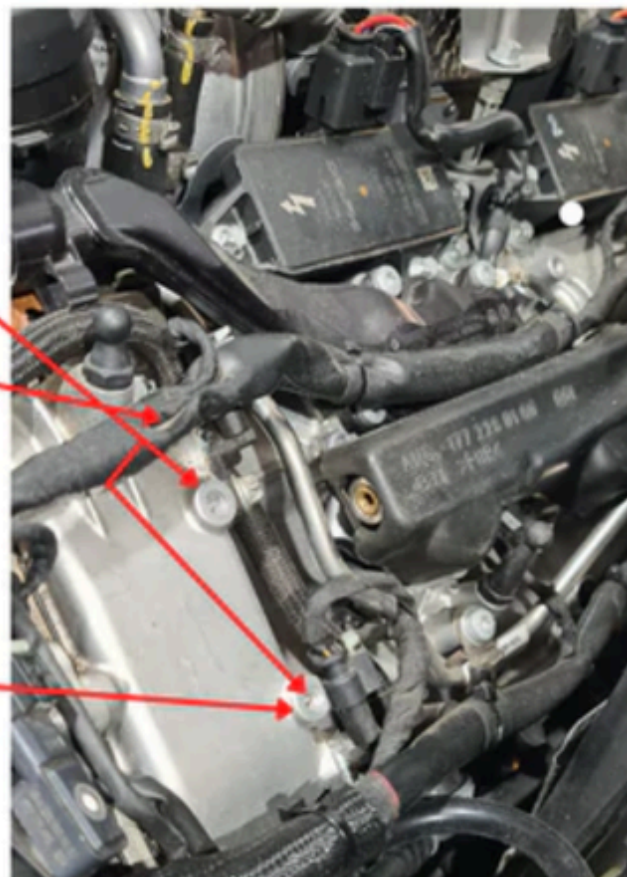
**LEFT SIDE Shown (Drivers side USA)**

**LEFT SIDE. NOTE:**

**STEP 4:** Remove both bolts as shown.

**Step 5:** Remove the small harness clip

**Note:** If you still have a harness mount here, that is ok. Supplied spacer is not required in the next step.





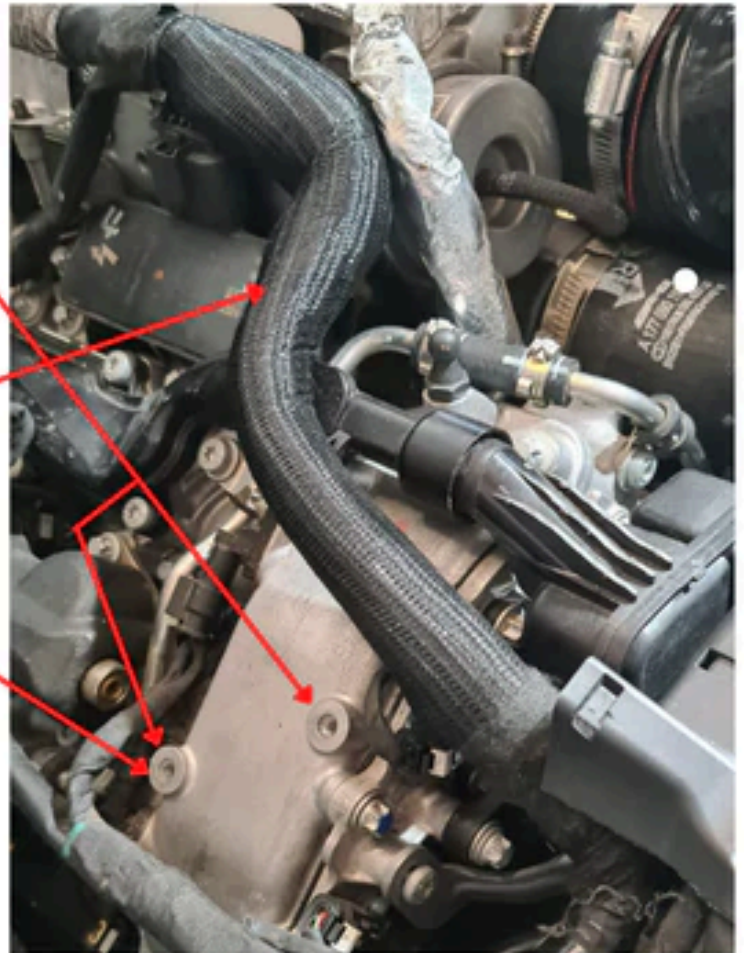
RIGHT SIDE Shown (Passenger side USA)

RIGHT SIDE. NOTE:

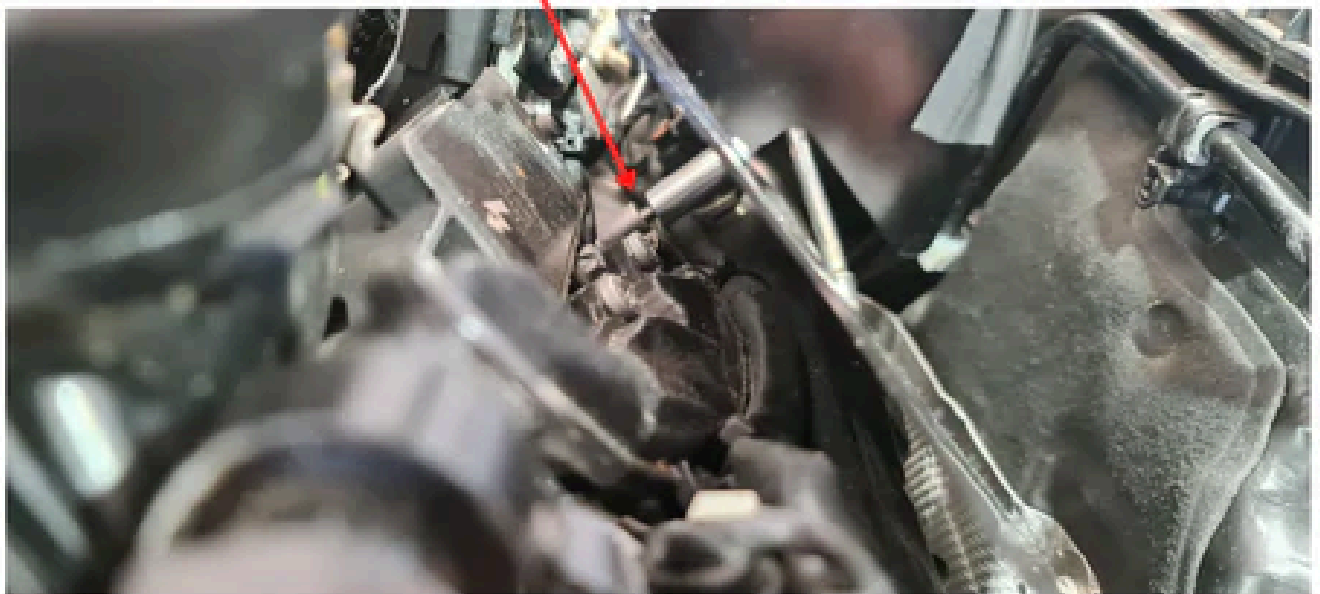
STEP 6: Remove both bolts as shown.

STEP 7: Remove the harness cover completely. This requires carefully cutting the cable ties and removing them, then the plastic cover can be removed. wrap or cover the wiring harness with a sleeve as shown.

STEP 8: If you still have a harness mount here, that is supplied spacer is not required in the next step.



STEP 8: Place shields in position, locating the bolt you just installed with the O ring into the hole of the cam cover you just removed the bolt and ground wire from. Repeat both sides.



LEFT SIDE Shown (Drivers side USA)

**STEP 9: OPTION** With the rear bolts **LOOSELY** in place, place the small standoff post in position on the lower front hole, then slide the medium length bolt into the hole and through the standoff. If you still have the factory harness cover , simply align the heat shield over the harness cover and thread into the cam cover hole. Do not fully tighten.

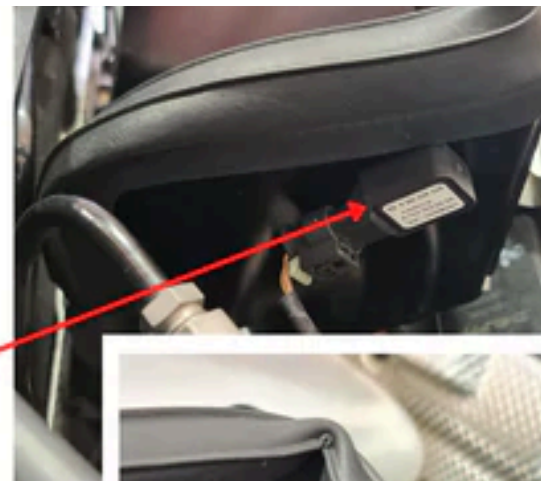
LEFT SIDE Shown (Drivers side USA)

**STEP 10:** Align the top hole in the heat shield over the threaded hole in the cam cover. Screw in the shortest bolt. With all 3 bolts now in place, work your way around evenly tightening each bolt.



**STEP 11:** Repeat the same assembly procedure on the right side shield and tighten all 3 bolts.

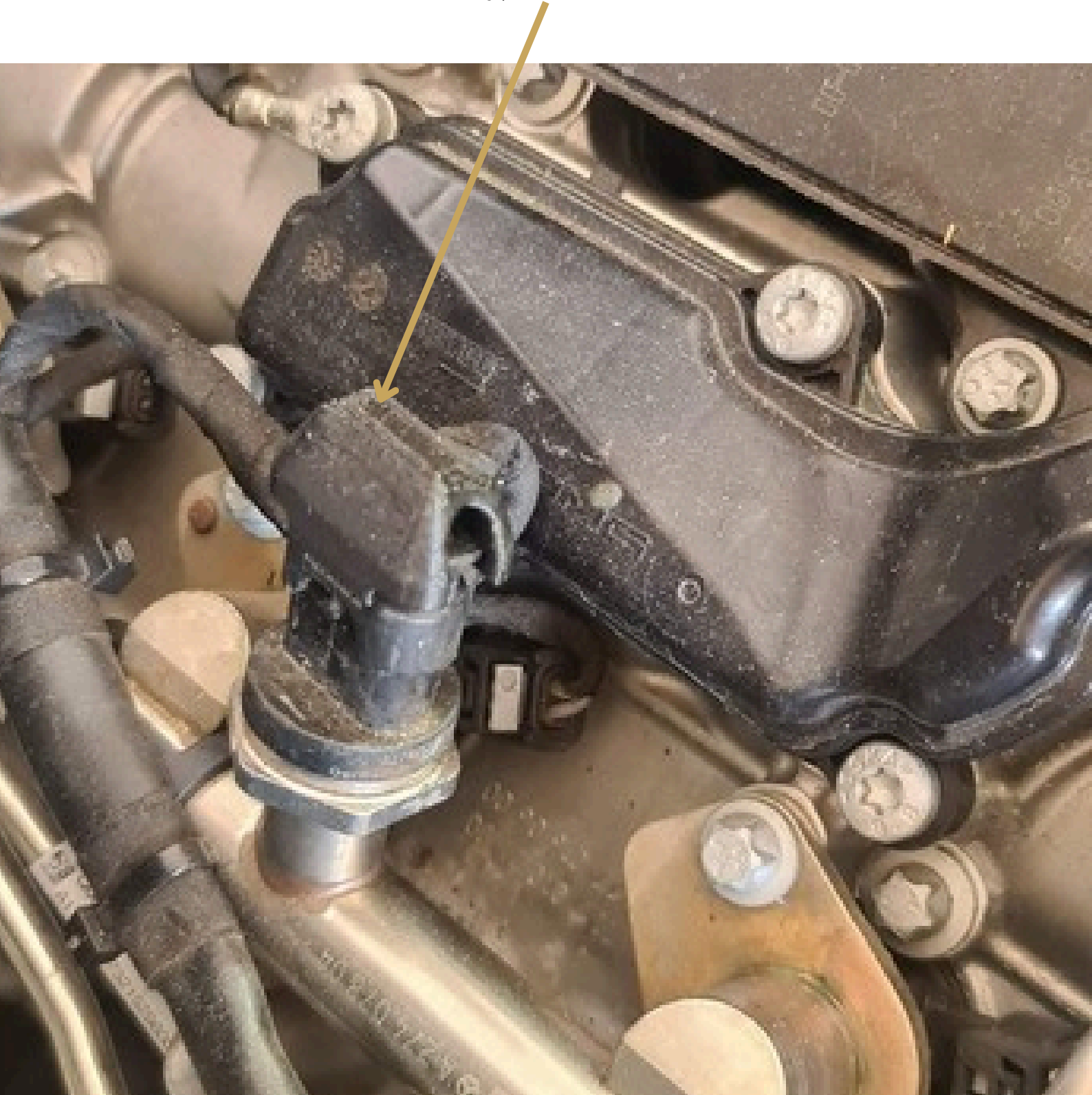
**Step 12:** Push the filter sensors through the holes on each shield. (repeat both sides).



**COMPLETE!** Please refer to specific intake instructions for installation, and also if you have the optional air scoops, these instructions can be found on our instruction page also.



Now place the harness shield on the right side fuel rail (shown heat shield removed for clarity)



Spread the flutes on the right side filter, this is not seen, and does not affect performance. It is simply to better clear the harness cover.



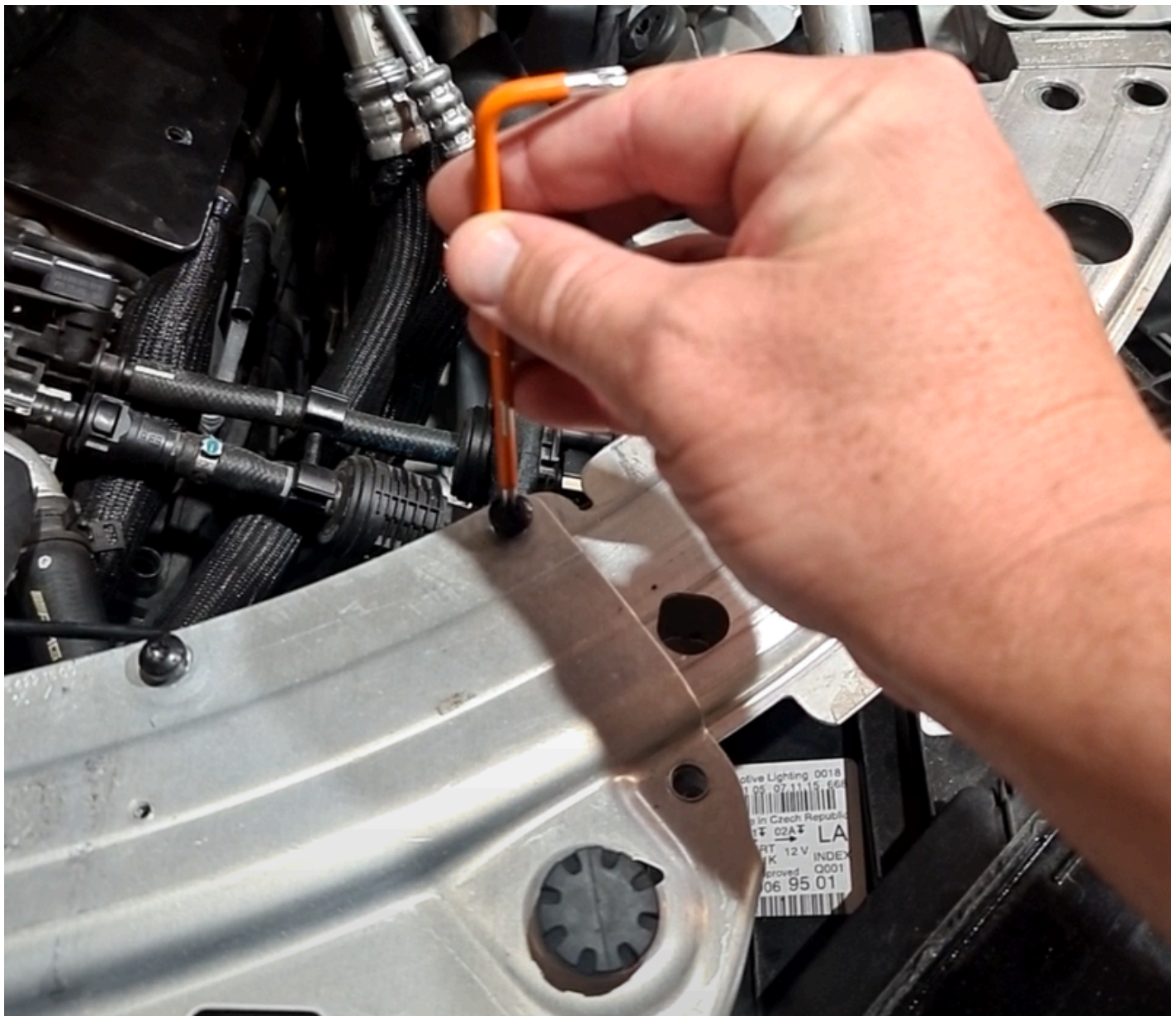


Filter should look like this on the underside of the right side intake.



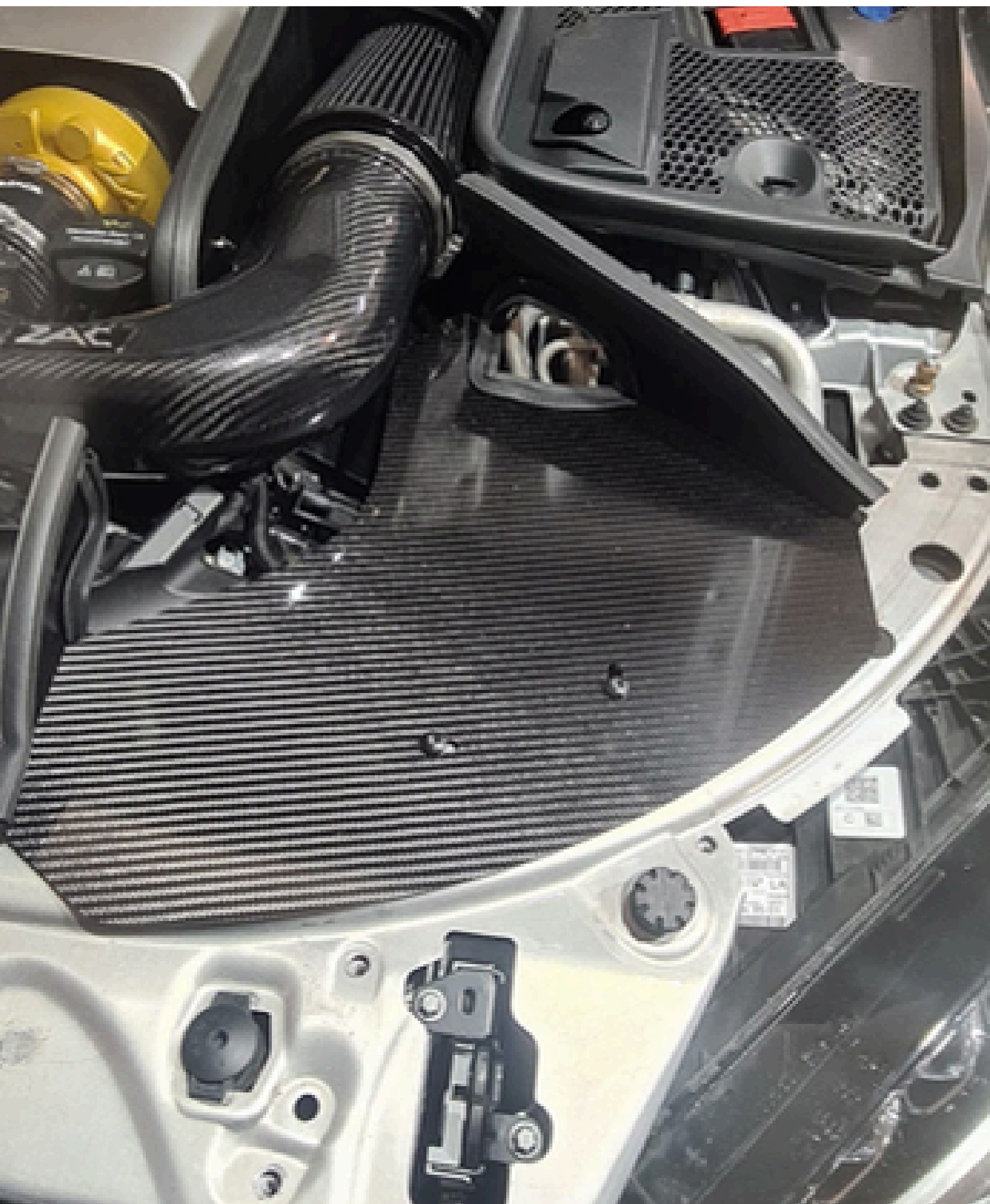
After you have fitted the filters to the intakes, fit the intakes to the car. Making sure you have the supplied clamps over the adaptors ready to clamp the intakes in place **DO NOT OVERTIGHTEN!!** They do not need a lot of torque.

Now it is time to fit the air scoops, First remove the black bolts on the support panel.





Fit the correct handed (left side shown) scoop into place, and use same bolts to secure (optional carbon dress panels shown).



**DONE! ENJOY!!**