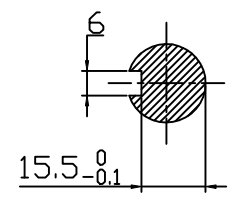
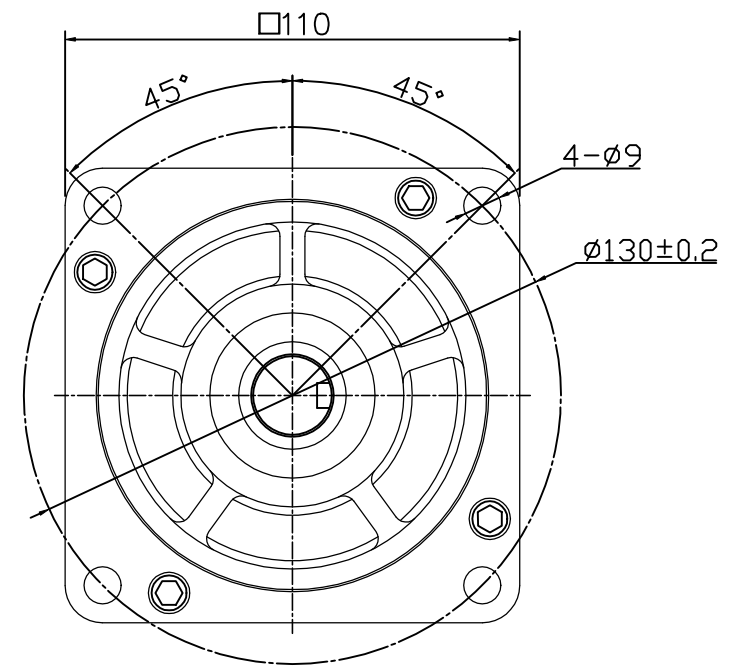
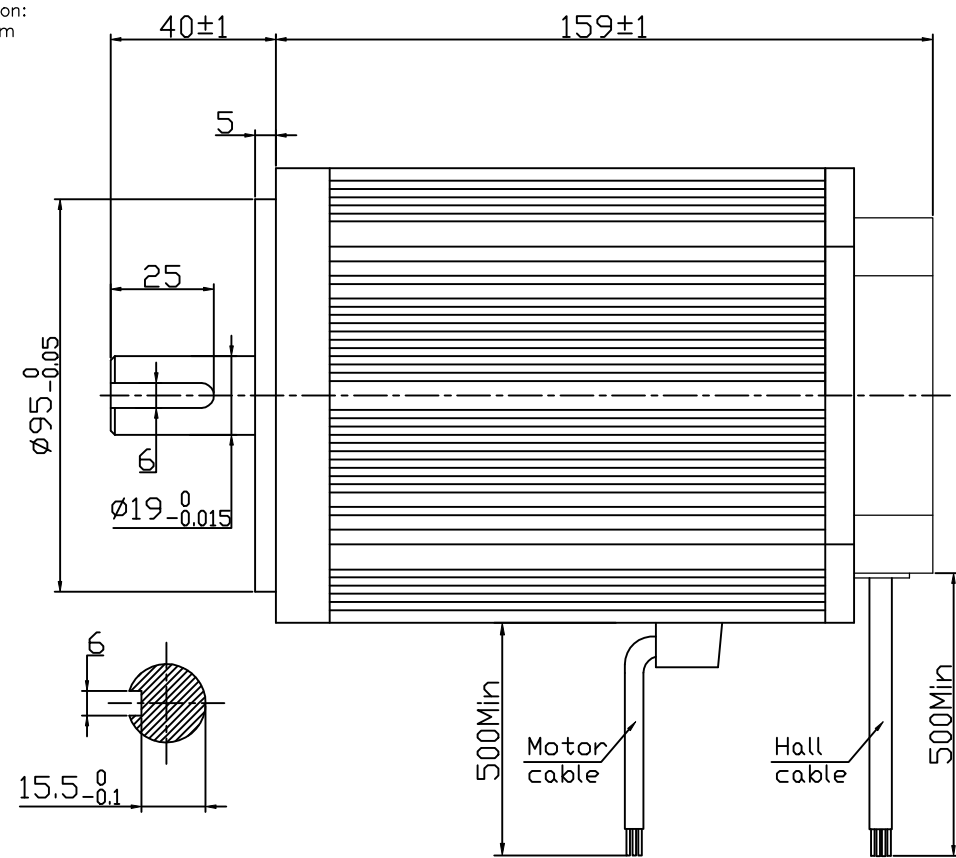
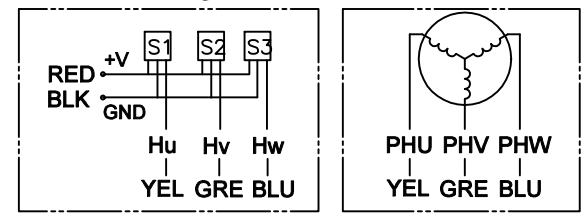


RevNo	Revision note	Date	Signature	Checked
B	机身长度加长1mm	21.09.10	WH	

Dimension:  
Unit=mm



Connection diagram:



Hall sensor cable  
Note: hall sensor power supply  
voltage +5 to +20VDC

Wiring cable

CW COMMUTATION: VIEWED FROM OUTPUT SHAFT

MANUFACTURER MODEL	JK110BLS75
NUMBER OF POLES	8
PHASE TO PHASE RESISTANCE	1.7 OHMS
NOMINAL VOLTAGE	310 VDC
NO LOAD SPEED	3400±10% RPM
NO LOAD CURRENT	0.6 Amps Max.
RATED TORQUE	3.3 N-m
RATED SPEED	3000±10% RPM
RATED CURRENT	3.7 Amps
OUTPUT POWER	1.03 KW
BACK EMF CONSTANT	91.1 V/KRPM
TORQUE CONSTANT	0.87 N-m/A
INSULATION CLASS	H

+5V	RED	红	UL2517 26 AWG
HALL U	YEL	黄	
HALL V	GRE	绿	
HALL W	BLU	蓝	
GND	GND	黑	
PHASE U	YEL	黄	AF 1.5mm <sup>2</sup>
PHASE V	GRE	绿	
PHASE W	BLU	蓝	

REV.	QTY.	No.	SIG.	DATE
B				21.09.11
DESIGN	WH	21.09.10	STD.	
CHECK				
PROC.			APPR.	

Title:			常州精控电机电器有限公司		
Specification			JK110BLS75		
CLS.MAK	WEIGHT	SCALE			
PAGE: 1/1			www.jkongmotor.com		