

# Excelog 6

## 6 Channel Handheld Temperature Data Logger with Touch Screen



- 4 x thermocouple inputs and 2 x RTD inputs
- Display and log all 6 channels simultaneously or individually
- Data logging to SD Card, or PC via USB interface
- Powered by built-in battery, USB or mains adapter (included) Touch screen with backlight
- Built-in stand
- Free software available
- Modbus interface for integration into third-party software
- 2-channel scrolling temperature chart
- Alarm indication for each channel
- CE Marked and RoHS 2 Compliant

### GENERAL SPECIFICATIONS

**Inputs** 4 x thermocouple inputs (any of the below types), for use with miniature thermocouple connectors, plus 2 x RTD inputs, spring clamp, for 2-wire or 3-wire RTDs, 28 to 16 AWG

Input Type	Temperature Range	Accuracy of Excelog only (whichever is greater)
<b>Thermocouples:</b>		
Type J	-200°C to 1200°C	± 0.1% or 0.8°C
Type K	-200°C to 1372°C	± 0.1% or 0.8°C
Type T	-200°C to 400°C	± 0.1% or 0.8°C
Type R	0°C to 1768°C	± 0.1% or 0.8°C
Type S	0°C to 1768°C	± 0.1% or 0.8°C
Type N	0°C to 1300°C	± 0.1% or 0.8°C
Type E	-200°C to 1000°C	± 0.1% or 0.8°C

**RTDs:**  
Pt100, Pt200, Pt500, Pt1000 -200°C to 850°C ± 1.0% or 1.0°C

**Temperature Resolution** 0.1° for temperatures below 1000° (C or F)  
1° for temperatures above 1000° (C or F)

**Display** 2.83" (72 mm) resistive touch TFT, 320 x 240 pixels, backlit

**Configurable Parameters** Temperature units, alarms, signal processing, date and time, data logging, power options, graph channels

**Temperature Units** °F or °C

**Alarm Configuration** 12 x visual alarms (2 per channel) with adjustable level, individually configurable as HI or LO.

**Signal Processing** Average, minimum, maximum, standard deviation, temperature difference between 2 channels

**Display response time** Temperatures update every 1 s

**Operating Temperature** 0 to 50°C

**Power Supply** Built-in rechargeable Li-ion battery, or USB, or 5 V DC mains adapter (included)

**Battery Life (typical)** 32 hours while logging with full display brightness  
Up to 96 hours while logging in power saving mode

**Charge Time** 6 hours (with supplied mains adapter)

**Weight** 200 g

**Dimensions** 136(w) x 71(h) x 32(d) mm

### DATA LOGGING SPECIFICATIONS

**Data Logging Interval** 1 to 86,400 seconds (1 day)

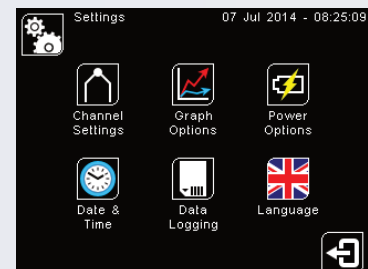
**Max. SD Card Capacity** 32 GB SD or SDHC (4 GB SD Card included - approx 2 years of data)

**Variables Logged** Measured temperature, cold junction temperature, alarm events

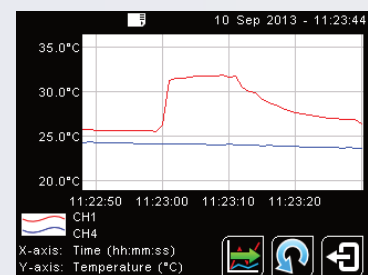
**File Format** .csv (can be imported to Excel)

**Configurable Parameters** Sample period, number of samples, scheduled start date/time (or manual start/stop)

### INTERFACE



- Intuitive touch screen interface
- English, Spanish, French, German, Italian, Chinese and Japanese languages
- Fully configurable; no additional hardware is required for configuration
- Each channel is configurable separately for input type, maths, alarms and display options
- Firmware updates via USB



#### Temperature Graph

Two selectable channels are displayed. Scroll back in time to view chart history.

### MODEL NUMBERS

**EXCELOG-6** 6-channel data logger with 4 GB SD Card, USB cable and 5 V DC mains adapter

### ACCESSORIES

**ELMAU** Spare mains adapter  
**ELSD** Spare 4 GB SD Card  
**ELCALCERT** Calibration certificate, UKAS traceable