



SFD Shirt Quick Reference Guide



What shirt style would you like to sew?



Reference: **Shirt Kit Instruction Book**
Camp Shirt - Pg. 24



Reference: **Shirt Kit Instruction Book**
Shirt w/ Yoke - Pg. 18



Reference: **Shirt Kit Instruction Book**
Man's Robe - Pg. 21



Reference: **Shirt Kit Instruction Book**
Asymmetric Front - Pg. 23



Reference: **Shirt Kit Instruction Book**
Western - Pg. 18



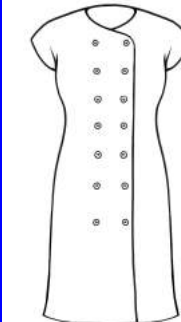
Reference: **Shirt Kit Instruction Book**
Drop Shoulder - Pg. 28



Reference: **Shirt Kit Instruction Book**
Sport Jersey - Pg. 24



Reference: **Shirt Kit Instruction Book**
Tab Front - Pg. 20



Reference: **Shirt Kit Instruction Book**
Double-Breasted - Pg. 22



Reference: **Shirt Kit Instruction Book**
Shawl Collar - Pg. 24



Reference: **Shirt Kit Instruction Book**
Contoured - Pg. 19



Reference: **Shirt Kit Instruction Book**
Cargo Jacket - Pg. 25 & 26



Reference: **Digital Sewing Pattern Digital E-Good**
Man's Travel Shirt



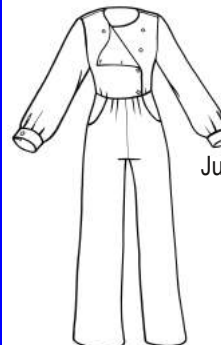
Reference: **Sew Sensational Shirts**
Shirtwaist Dress
Pg. 8-11



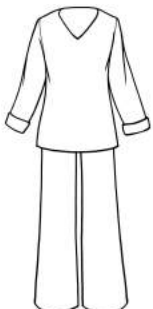
Reference: **Shirt Kit Instruction Book**
Robe - Pg. 21 & 27



Reference: **Shirt Kit Instruction Book**
Safari/Cargo - Pg. 25



Reference: **Children's Kit Instruction Book**
Jumpsuit/Romper-Pg. 20
Shirt Top
Pants Bottom



Reference: **Shirt Kit Instruction Book**
Pajamas - Pg. 27



Reference: **Shirt Kit Instruction Book**
Nightshirt - Pg. 27