



SFD 'Dress' Quick Reference Guide



What blouse/skirt/dress/jacket style would you like to sew?



Reference: **Dress Kit Instruction Book**
Basic Short Sleeve Blouse



Reference: **Dress Kit Instruction Book**
Princess Seams - Pg. 34
Sweetheart Neck - Pg. 19



Reference: **Dress Kit Instruction Book**
Tie Collar Blouse - Pg. 40



Digital Sewing Pattern Digital E-Good
Tunic Top



Reference: **4-pg Fashion Design Sheet**
Shirring Instructions



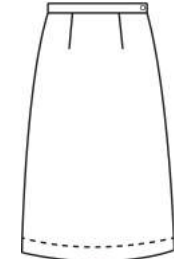
Reference: **Fashion Leaflet #1**
Raglan Sleeve Designing



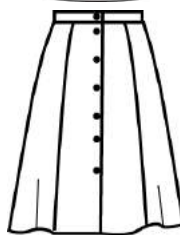
Reference: **Fashion Leaflet #4 Dress Kit Book**
Lapel Jacket Designing
2-part Sleeve - Pg. 36



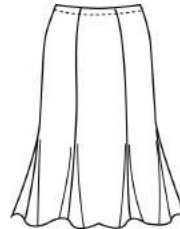
Reference: **Dress Kit Instruction Book**
Pleated Skirt - Pg. 30



Reference: **Dress Kit Instruction Book**
Straight Skirt - Pg. 29



Reference: **Dress Kit Instruction Book**
Gored Skirt - Pg. 31



Reference: **4-pg Fashion Design Sheet**
Tulip Flip Skirt



Reference: **Dress Kit Instruction Book**
High/Low Swing Top - Pg. 38



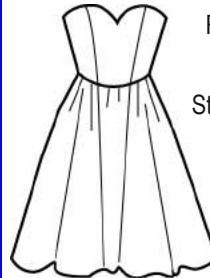
Reference: **Dress Kit Instruction Book**
Shawl Collar - Pg. 46



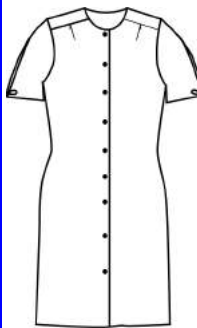
Digital Sewing Pattern Digital E-Good
Asymmetrical Zippered Jacket



Reference: **Dress Kit Instruction Book**
Surplice Dress - Pg. 42



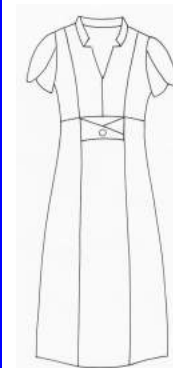
Reference: **Dress Kit Instruction Book**
Strapless Dress - Pg. 44



Reference: **Dress Kit Instruction Book**
Shift/Chemise - Pg. 32



Reference: **Dress Kit Instruction Book**
Sun Dress - Pg. 21



Reference: **Beyond Bodice Basics**
Empire w/ Princess Seam Dress - Pg. 10-13