



MARATHON

MECHANICAL STOPWATCHES



MARATHON WATCH COMPANY LTD.



SINGLE ACTION MECHANICAL STOPWATCHES

SINGLE ACTION, 2 SCALE (1/5 SEC & 1/100 MIN) 30 MIN REGISTER

PRODUCT NO. ST211003



- Intended use: Science, sports, time & motion studies
- 1/5 second and decimal minute (1/100 or 0.01 minute) scales
- Sweep second hand makes one revolution in 60 seconds, 30 minute register
- Shock-resistant, anti-magnetic movement
- Temperature-compensated hairspring
- Starts, stops and returns to zero by successive crown depressions

SPECIFICATIONS

Movement	Lever 15 jewel
Scale Quantity	3
Scale	60 sec 30 min register 1/5th second
Divisions	1/100th minute 1 minute
Case	Diamond-polished, chrome plated
Lens	Shatter resistant Plexiglass
Dimensions	2.4" x 1.9" x 0.7" 6.1 x 4.8 x 1.8 cm
Weight	0.15 lb (2.4 oz.)
Special Features	Anti-magnetic, shock protected & chemical resistant

NSN

6645-00-250-4680
6645-99-521-3169

SINGLE ACTION MECHANICAL, (1/10 SEC) 15 MIN REGISTER

PRODUCT NO. ST211005



- Intended use: Scientific studies, sports competition, and motion-time studies
- Sweep second hand makes one revolution in 30 seconds, 15 minute register
- Shock-resistant, anti-magnetic movement
- Temperature-compensated hairspring
- Starts, stops and returns to zero by consecutive crown depressions

SPECIFICATIONS

Movement	Lever 15 jewel
Scale Quantity	2
Scale	1-30 sec 31-60 sec 15 min register
Divisions	1/10th second
Case	Diamond-polished, chrome plated
Lens	Shatter resistant Plexiglass
Dimensions	2.4" x 1.9" x 0.7" 6.1 x 4.8 x 1.8 cm
Weight	0.15 lb (2.4 oz.)
Special Features	Anti-magnetic, shock protected & chemical resistant

NSN

6645-99-910-1002
6645-21-872-2030

SINGLE ACTION 5000 YARD (1/50TH & 6 SECOND), 100 YARDS OR 1 SEC INTERVAL

PRODUCT NO. ST194001



- Intended use: Timing torpedo runs and high velocity time studies
- Sweep second hand makes one revolution in 6 seconds
- Shock-resistant, anti-magnetic movement
- Temperature-compensated hairspring
- Starts, stops and returns to zero by consecutive crown depressions

SPECIFICATIONS

Movement	Lever 7 jewel
Scale Quantity	1
Scale	6 sec/5000 yard
Divisions	1/50 sec 100 yards
Case	Diamond-polished, chrome plated
Lens	Shatter resistant Plexiglass
Dimensions	2.4" x 1.9" x 0.7" 6.1 x 4.8 x 1.8 cm
Weight	0.15 lb (2.4 oz.)
Special Features	Yard markings (0-5000) Anti-magnetic, shock protected & chemical resistant

NSN

6645-99-520-9365
6645-21-558-0077

SINGLE ACTION MECHANICAL STOPWATCHES

SINGLE ACTION, (1/5 SEC) 30 MIN REGISTER

PRODUCT NO. ST194007



- Intended use: Laboratories and geological surveys
- Sweep second hand makes one revolution in 60 seconds, 30 minute register
- Shock-resistant, anti-magnetic movement
- Temperature-compensated hairspring
- Starts, stops and returns to zero by consecutive crown depressions

SPECIFICATIONS

Movement	Lever 7 jewel
Scale Quantity	2
Scale	60 sec 30 min sweep register
Divisions	1/5th second 1 minute
Case	Composite
Lens	Shatter resistant Plexiglass
Dimensions	2.8" x 2.3" x 0.7" 7 x x 5.8 x 1.8 cm
Weight	0.15 lb (2.4 oz.)
Special Features	Anti-magnetic, shock protected & chemical resistant

NSN

6645-00-250-4680

SINGLE ACTION GLOW IN THE DARK, (1/5 SEC) 30 MIN REGISTER

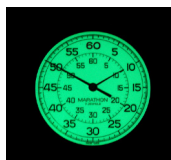
PRODUCT NO. ST194009



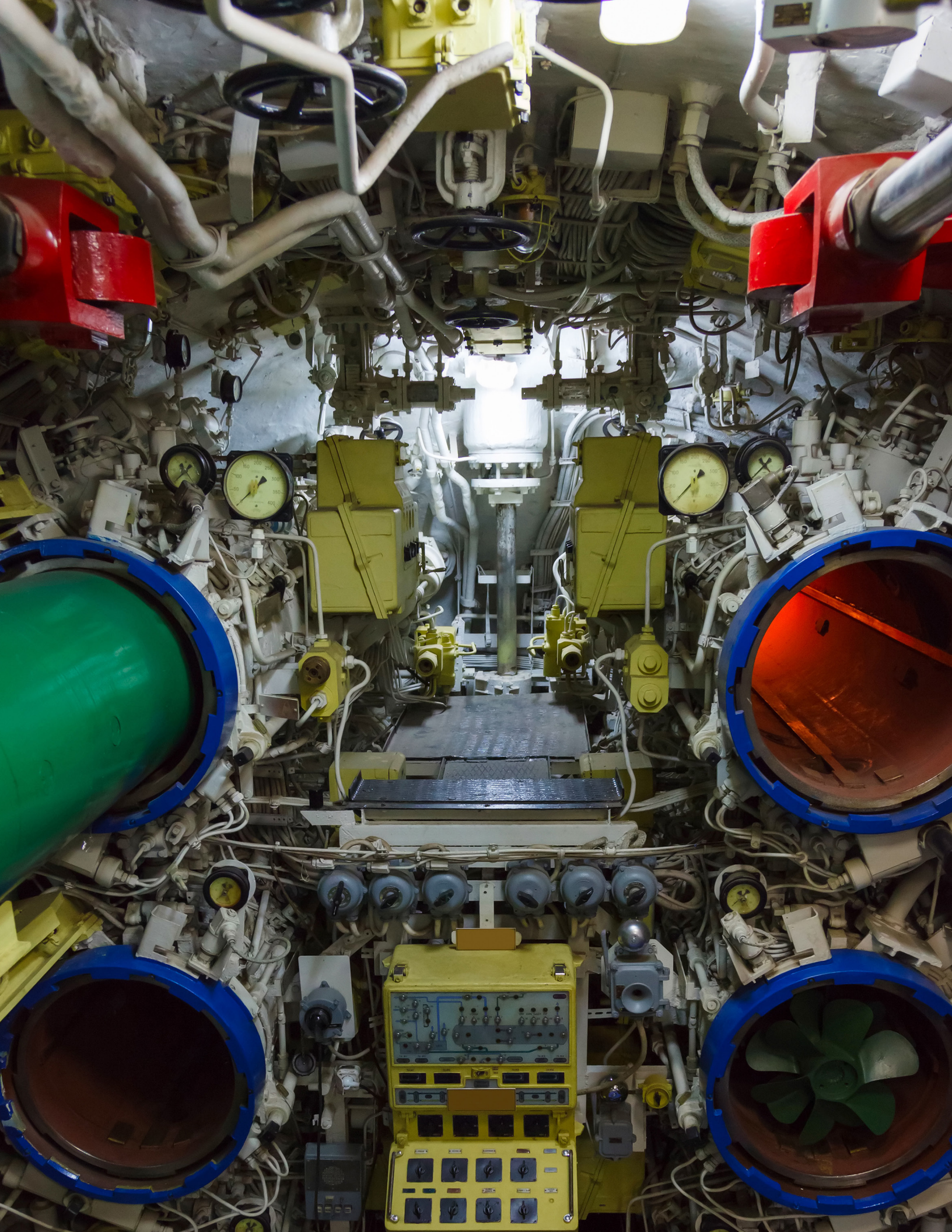
- Intended use: photography, night-time use
- Sweep second hand makes one revolution in 60 seconds, 30 minute register
- Shock-resistant, anti-magnetic movement
- Temperature-compensated hairspring
- Starts, stops and returns to zero by consecutive crown depressions
- iaw 6645-00-250-4680 with glow feature

SPECIFICATIONS

Movement	Lever 7 jewel
Scale Quantity	2
Scale	60 sec 30 min register
Divisions	1/5th second
Case	Composite
Lens	Shatter resistant Plexiglass
Dimensions	2.8" x 2.3" x 0.7" 7 x x 5.8 x 1.8 cm
Weight	0.15 lb (2.4 oz.)
Special Features	Anti-magnetic, shock protected & chemical resistant



GLOW IN THE DARK



INTERRUPTION TYPE MECHANICAL STOPWATCHES

THE TOP BUTTON IS THE WINDING CROWN AND ALLOWS THE USER TO START AND STOP THE STOPWATCH, THE SIDE BUTTON ALLOWS THE USER TO RETURN HANDS TO ZERO WHEN STOPWATCH IS IN A STOPPED POSITION.

INTERRUPTION TYPE, (1/5 SEC, 1/100 MIN) WITH 60 MIN REGISTER

PRODUCT NO. ST211004



- Intended use: Industrial timing
- Sweep second hand makes one revolution in 60 seconds, 60 minute register
- Shock-resistant, anti-magnetic movement
- Locked returns prevent accidental reset
- Temperature-compensated hairspring
- Starts & stops by consecutive crown depressions
- Returns to zero from side button depression in stopped position only

SPECIFICATIONS

Movement	Lever 16 jewel
Scale Quantity	2
Scale	60 seconds 60 min register 1/5th second
Divisions	1/100th minute 1 minute
Case	Diamond-polished, chrome plated Shatter resistant
Lens	Plexiglass
Dimensions	2.7" x 2.1" x 0.7" 7 x x 5.8 x 1.8 cm
Weight	0.20 lb (3.2 oz.)
Special Features	Anti-magnetic, shock protected & chemical resistant

THE TOP BUTTON IS THE WINDING CROWN AND ALLOWS THE USER TO START AND STOP THE STOPWATCH, THE SIDE BUTTON ALLOWS THE USER TO RETURN HANDS TO ZERO WHEN STOPWATCH IS IN A STOPPED OR RUNNING POSITION.

INSTANTANEOUS RETURN AND TIME-OUT, WITH CENTRAL 60 MIN REGISTER

PRODUCT NO. ST194003



- Intended use: Military
- Sweep second hand makes one revolution in 60 seconds, 60 minute register
- Shock-resistant, anti-magnetic movement
- Temperature-compensated hairspring
- Starts & stops by consecutive crown depressions. Returns to zero from side button depression in stopped or running position
- Manufactured in accordance with CID A-A-5581 and MIL-S-14823A

SPECIFICATIONS

Movement	Lever 7 jewel
Scale Quantity	2
Scale	60 seconds 60 min register 1/5th second
Divisions	1 minute Composite
Case	Shatter resistant
Lens	Plexiglass
Dimensions	2.8" x 2.3" x 0.7" 7 x x 5.8 x 1.8 cm
Weight	0.20 lb (3.2 oz.)
Special Features	Anti-magnetic, shock protected & chemical resistant

NSN

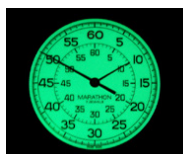
6645-00-126-0286

INSTANTANEOUS RETURN AND TIME-OUT, WITH CENTRAL 60 MIN REGISTER

PRODUCT NO. ST194008



- Intended use: Military, photography
- Glows in the dark
- Sweep second hand makes one revolution in 60 seconds, 60 minute register
- Shock-resistant, anti-magnetic movement
- Temperature-compensated hairspring
- Starts & stops by consecutive crown depressions. Returns to zero from side button depression in stopped or running position
- Manufactured in accordance with CID A-A-5581 and MIL-S-14823A



GLOW IN THE DARK

SPECIFICATIONS

Movement	Lever 7 jewel
Scale Quantity	2
Scale	60 seconds 60 min register 1/5th second
Divisions	1 minute Composite
Case	Shatter resistant
Lens	Plexiglass
Dimensions	2.8" x 2.3" x 0.7" 7 x x 5.8 x 1.8 cm
Weight	0.20 lb (3.2 oz.)
Special Features	Anti-magnetic, shock protected & chemical resistant

NSN

iw 6645-00-126-0286
with added glow feature

INTERRUPTION TYPE MECHANICAL STOPWATCHES

MONTE CARLO STOPWATCH (1/5 SEC) WITH 60 MINUTE & 12 HOUR REGISTERS

PRODUCT NO. ST194004



- Intended use: Dashboard
- Sweep second hand makes one revolution in 60 seconds, 12 hour and 60 minute register
- Outer numbers and hands illuminated by MaraGlo™
- Bi-directional bezel
- Shock-resistant, anti-magnetic movement
- Temperature-compensated hairspring
- Starts and stops by consecutive crown depressions
- Instantaneous return by depressing side button in running position, hands return to zero (by releasing the button it results in both hands starting to record the next interval of time)
- Dashboard mountable, use for aircraft canopy section or tank dashboards

SPECIFICATIONS

Movement	Lever
Scale Quantity	2
Scale	60 seconds 60 minutes 12 hours
Divisions	1/5th second 1 minute, 1 hour
Case	Stainless Steel Shatterproof
Lens	Plexiglass
Dimensions	1.75" W x 3.5" D (4.4 x 8.9 cm)
Special Features	Bi-directional bezel Dashboard mountable

NSN

6645-00-408-3025





MARATHON

MARATHON WATCH COMPANY LTD.

For a Catalog of our Digital Stopwatch line
please send request to:

North America: 1-800-822-4329

International: 1-905-764-9420

Fax: 905-764-0035

Email: sales@marathonwatch.com

www.MarathonWatch.com