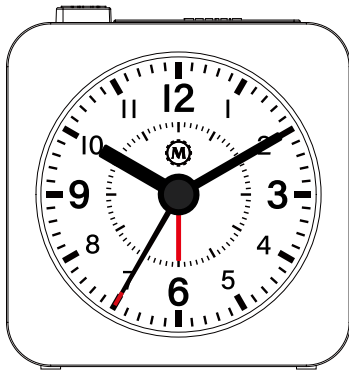


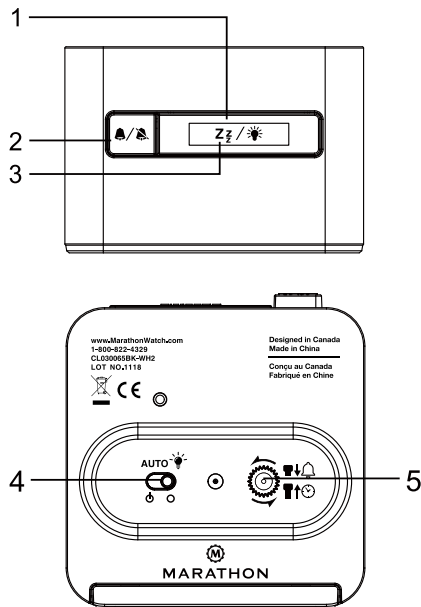
Night-light Analog Alarm Clock
Model: C1126
USER MANUAL



MAIN FEATURES

- Alarm and snooze function
- Backlight and night-light function

FUNCTION KEYS

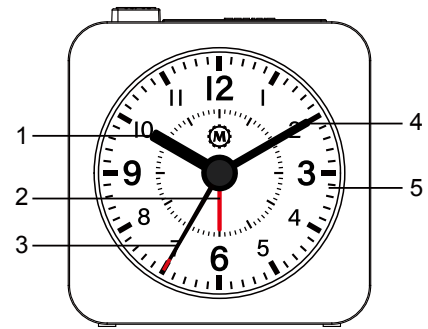


- [SNOOZE/LIGHT] key:**
 - Press it to turn on backlight for 3 seconds. When the alarm is sounding, press it to enter snooze for 4 minutes.
- [ALARM ON/OFF] key:**
 - Press it to turn on or turn off the alarm.
- Night-light sensor
- [NIGHT-LIGHT ON/OFF] slide switch:**
 - Slide it to **< ON >** position to activate night-light function.
 - When it is **< ON >**, the backlight will automatically turn on

- in dim & dark environment detected by the light sensor.
 - The brightness of night-light is weaker than normal backlight.
 - Slide it to **< OFF >** position to turn off the night-light function.
- [SET ALARM] knob:**
 - Adjust it to set the alarm time.

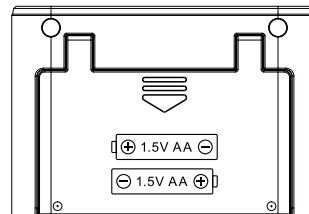
DISPLAY SYMBOLS

- Hour hand
- Alarm hand
- Second hand
- Minute hand
- Dial

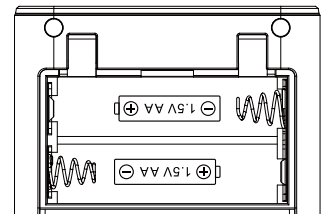


GETTING STARTED

- Remove the battery door of the unit.
- Insert 2 new AA size batteries according to the polarity mark on the battery compartment.



Open the battery door



Battery compartment

- Replace the battery door.

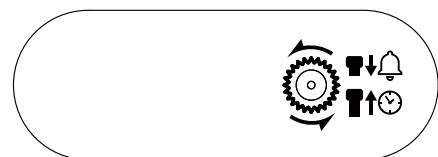
OPERATION

(1) MANUAL TIME SETTING

- After power the clock or re-inserting batteries, you can set the time manually.
- Pull the **[SET ALARM]** knob out of the hole.
 - Turn the **[SET ALARM]** knob anti-clockwise to enter time setting mode.

(2) ALARM TIME SETTING

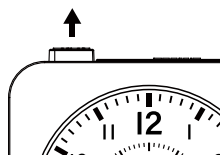
Turn the **[SET ALARM]** knob anti-clockwise (pointed in picture below) to set the desired alarm time.



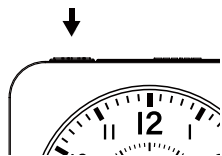
(3) ALARM ON/OFF

- Press **[ALARM ON/OFF]** key to activate alarm function.

- Press [**ALARM ON/OFF**] key again to deactivate alarm function.



Alarm on



Alarm off

(4) USING THE ALARM AND SNOOZE

When the time reaches the set alarm time, alarm sound will start. The alarm beeping is 120 seconds.

Alarm sound stops on the following conditions:

- If there is no operation, the alarm sound will stop automatically after 2-minute beeping (and re-alarm 12 hours later).
- Press [**ALARM ON/OFF**] key to stop the alarm sound.
- Press [**SNOOZE/LIGHT**] key to stop the alarm sound and enter snooze. Five minutes later, alarm sound will start again. Snooze can be repeatedly operated maximum 7 times.

(5) USING THE NIGHT LIGHT FUNCTION

- Slide the [**NIGHT-LIGHT ON/OFF**] switch to **<ON>** position to activate night-light function. When it is **<ON>**, the backlight will automatically turn on in dim & dark environment detected by the light sensor. The brightness of night-light is weaker than normal backlight.
- Slide it to **<OFF>** position to turn off the night-light function.

BATTERY REPLACEMENT

When the backlight becomes dim, replace with 2 new AA size batteries at once. Pay attention to the battery polarity.

Note:

Attention! Please dispose of used batteries and main unit in an ecologically safe manner.



SPECIFICATIONS

Power	2 x AA 1.5V batteries
Alarm duration	35 +/- 5 minutes
Snooze	4~5 minutes; 3~9 times
Dimension	70(W) x 70(H) x 48mm(D)