

GM Holdings Co.,Ltd.

Cellapy

A.Repair Cream 30ml

- No.1 in total products at H&B STORE * OLIVE YOUNG, which is the H&B market leader in Korea.
- Aired on No.1 K-Beauty TV show 'Get it beauty', 'Follow 8'.
- Contains stem cell fluid, EGF, bFGF growth factor, peptides, etc.
- Helps skin rejuvenate effectively.
- Certified Anti-wrinkle & whitening double function.
- Protects sensitive, dry skin.
- Mady by GM dermatology R&D group.



FOB Price	USD 26
M.O.Q.	30 pcs
Target Customer	30's-40's
Target Countries	China, Southeast Asia, America, Euorope

Dr.zium Cica Care cream

- Aired on No.1 K-Beauty TV show 'Get it beauty', 'Follow 8'.
- Contains Centella Asiatica extract,propolis,Apple extract,EGf,Acnoheal,Defensin ingredients,etc.
- Quickly Soothes irritated skin.
- Vitamin K, Flower AHA improves skin tone.
- Fresh & Moist texture for oily skin.
- Certified Whitening & Anti-wrinkle effects.
- Mady by GM dermatology R&D group.

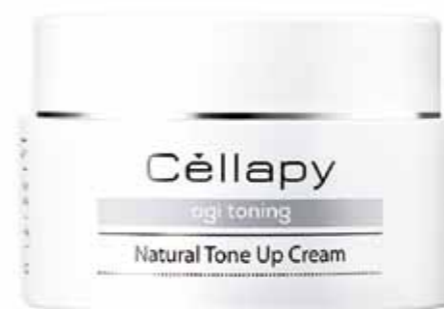


FOB Price	USD 36
M.O.Q.	30
Target Customer	20's-30's
Target Countries	China, Southeast, Europe, America

Homepage	EN www.realderma-cellapy.com CN www.cellapy.cn KR www.cellapy.co.kr
Annual Sales(2017)	USD 8,180,000
Export Amount(2017)	USD 120,000
Export country	China, Hong Kong, Singapore
Distribution network Performance	Drugstore Olive young, Watsons, Lohb's Duty free shops, On line stores, etc.
Certification of export	FDA

Agi Toning Natural Tone up Cream 50ml

- Real natural whitening effect for dull skin.
- Contains Pearl powders, Tranexamic acid,glutathione, Vit 7, Niacinamide, etc.
- Controls melanin production.
- Provides abundant moisture to all skin types.
- Strengthens skin barrier.
- Certified Whitening & Anti-wrinkle effects.
- Mady by GM dermatology R&D group.

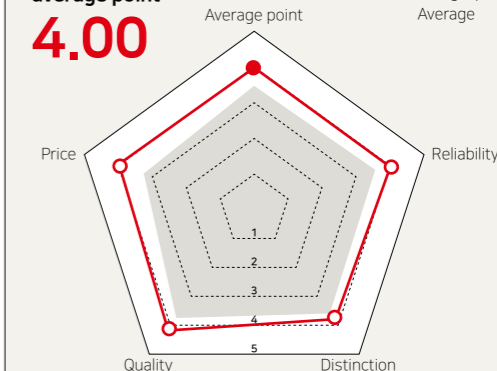


FOB Price	USD 45
M.O.Q.	30
Target Customer	20's-40's
Target Countries	China, Southeast, Europe, America

COMPANY INTRODUCTION

average point

4.00



Rating Region



Our product is currently used at over 3,000 dermatology hospitals and clinics in Korea.

Main function of our product is skin rejuvenation, and we got the clinical test. 'Cellapy' has been developed through research of CEO JH Kim and GM Dermatology Group's medical team. While CEO JH Kim has been directly operating his own dermatology for 10 years, He has researched the cosmetics that can aid various skin problems from the view point of a dermatologist.

#Stem cell #Dermatology #Skin care #rejuvenation

Contact Point

- Yebin Na
- +82-70-8706-2234
- grace@gmholdings.co.kr