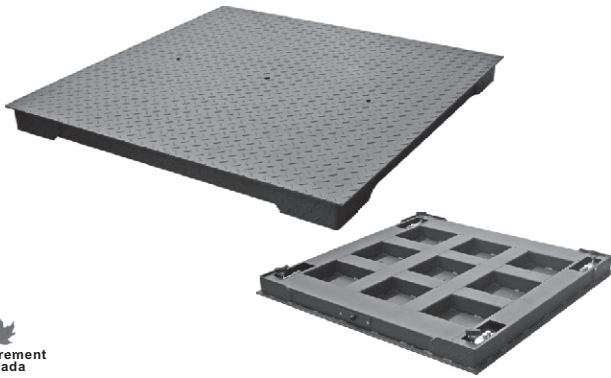


## Floor Scale, Mild Steel



### Features:

- Heavy-duty industrial design
- 5mm thick deck plate with rugged diamond safety tread
- Rigid steel channel frame
- Factory finished corner error adjustment
- Threaded eyebolt holes for easy lifting (eyebolts included)

### Complete Set Includes:

- 4 high accuracy IP67 load cells, model 563YH (OIML MAA C6, Y=8 500 and NTEP 1:5 000 Class III, Multiple Cell)
- 4 swivel mild steel feet with removable rubber base (model: AMF)
- 2 eyebolts
- 1 aluminum junction box, model J04EA
- 1 level bubble

### DIMENSIONS

| PART NUMBER                          | RATED CAPACITY | LOAD CELL CAPACITY | SIZE IN INCHES (W x L x H) | WEIGHT        |
|--------------------------------------|----------------|--------------------|----------------------------|---------------|
| <b>Painted Mild Steel</b>            |                |                    |                            |               |
| FSP3x3-500kg                         | 500kg          | 563YH-300kg        | 36" x 36" x 4"             | 72kg / 159 lb |
| FSP3x3-1t                            | 1t             | 563YH-500kg        | 36" x 36" x 4"             | 72kg / 159 lb |
| FSP3x3-2.5t                          | 2.5t           | 563YH-1t           | 36" x 36" x 4"             | 72kg / 159 lb |
| FSP3x3-1Klb                          | 1Klb           | 563YH-500lb        | 36" x 36" x 4"             | 72kg / 159 lb |
| FSP3x3-2Klb                          | 2Klb           | 563YH-1Klb         | 36" x 36" x 4"             | 72kg / 159 lb |
| FSP3x3-5Klb                          | 5Klb           | 563YH-2.5Klb       | 36" x 36" x 4"             | 72kg / 159 lb |
| FSP4x4-500kg                         | 500kg          | 563YH-300kg        | 48" x 48" x 4"             | 120kg/265 lb  |
| FSP4x4-1t                            | 1t             | 563YH-500kg        | 48" x 48" x 4"             | 120kg/265 lb  |
| FSP4x4-2.5t                          | 2.5t           | 563YH-1t           | 48" x 48" x 4"             | 120kg/265 lb  |
| FSP4x4-5t                            | 5t             | 563YH-2t           | 48" x 48" x 4"             | 120kg/265 lb  |
| FSP4x4-1Klb                          | 1Klb           | 563YH-500lb        | 48" x 48" x 4"             | 120kg/265 lb  |
| FSP4x4-2Klb                          | 2Klb           | 563YH-1Klb         | 48" x 48" x 4"             | 120kg/265 lb  |
| FSP4x4-5Klb                          | 5Klb           | 563YH-2.5Klb       | 48" x 48" x 4"             | 120kg/265 lb  |
| FSP4x4-10Klb                         | 10Klb          | 563YH-4Klb         | 48" x 48" x 4"             | 120kg/265 lb  |
| FSP5x5-2.5t                          | 2.5t           | 563YH-1t           | 59" x 59" x 4"             | 200kg/441 lb  |
| FSP5x5-5t                            | 5t             | 563YH-2t           | 59" x 59" x 4"             | 200kg/441 lb  |
| FSP5x5-5Klb                          | 5Klb           | 563YH-2.5Klb       | 59" x 59" x 4"             | 200kg/441 lb  |
| FSP5x5-10Klb                         | 10Klb          | 563YH-SE5Klb       | 59" x 59" x 4"             | 200kg/441 lb  |
| FSP4x6-2.5t                          | 2.5t           | 563YH-1t           | 48" x 72" x 4"             | -             |
| FSP4x6-5t                            | 5t             | 563YH-2t           | 48" x 72" x 4"             | -             |
| FSP4x6-5Klb                          | 5Klb           | 563YH-2.5Klb       | 48" x 72" x 4"             | -             |
| FSP4x6-10Klb                         | 10Klb          | 563YH-SE5Klb       | 48" x 72" x 4"             | -             |
| FSP5x7-2.5t                          | 2.5t           | 563YH-1t           | 59" x 84" x 4"             | -             |
| FSP5x7-5t                            | 5t             | 563YH-2t           | 59" x 84" x 4"             | -             |
| FSP5x7-5Klb                          | 5Klb           | 563YH-2.5Klb       | 59" x 84" x 4"             | -             |
| FSP5x7-10Klb                         | 10Klb          | 563YH-SE5Klb       | 59" x 84" x 4"             | -             |
| <b>Hot Dip Galvanized Mild Steel</b> |                |                    |                            |               |
| FSP4x4-5Klb-GI                       | 5Klb           | 563YH-2.5Klb       | 48" x 48" x 4"             | 138kg/304 lb  |

### OPTIONAL ACCESSORIES

- Indicators (page 144/147)
- Ramps (page 166)
- Bumper Guards (page 167)
- Scale Base Mounting Plate (page 173)

Measurement Canada Approval for  
 - 3'X3'-5Klb  
 - 3'X4'-5Klb  
 - 4'X4'-5Klb  
 - 4'X5'-5Klb  
 - 5'X5'-5Klb