



Concrete

Characteristics



Smith & Goat create hand-cast, bespoke concrete basins and surfaces using a variety of natural materials. Blending aggregate, cement and pigments together is a skill which results in a unique finish. Variations in colour and surface texture are to be celebrated, these characteristics are what we believe makes concrete such a beautiful material to work with and display in your space.

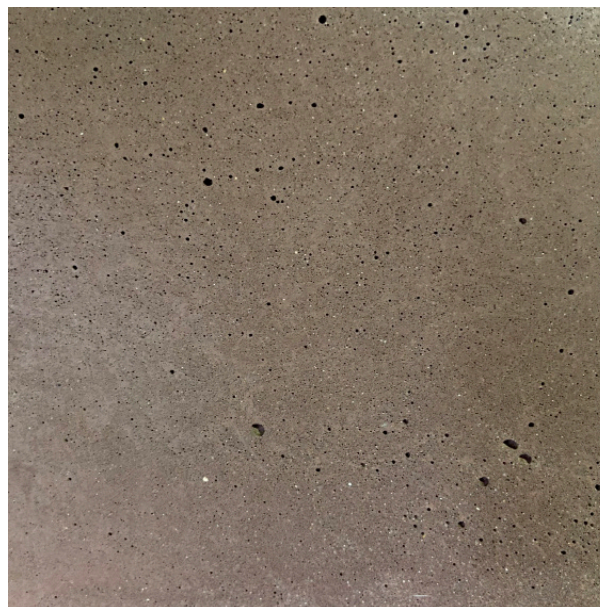
Natural variations in the patina, colour, surface texture and air pockets should be expected and have no bearing on the structural integrity of your concrete item and are not seen as imperfections or defects. This guide highlights the typical characteristics that appear in concrete.

Every item cast by Smith & Goat is unique and will gain character over time.



SMITH & GOAT





Air pockets

Due to the technique used to cast concrete, air can become trapped within the concrete and create small holes on the surface.

The size and amount of holes will vary from cast to cast and cannot be controlled. Air pockets add to the texture and natural aesthetic of concrete.





Surface colour

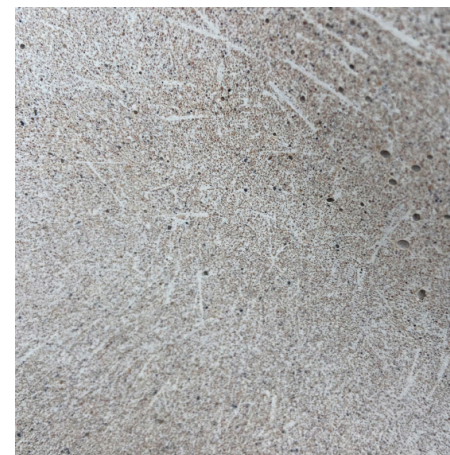
Concrete will never be a solid block colour and no two items will ever be the same. The natural materials used to create our concrete mix vary which cause different tones and texture within the surface. This unique patina is what makes concrete such a beautiful material to work with. Darker colours will naturally age and wear more than lighter colours, so please consider this when making your colour choice.





Exposed fibres

Smith & Goat cast basins and surfaces using Glass Fibre Reinforced Concrete (GFRC), this ensures our concrete is strong, durable and fit for purpose. In some cases the fibres may be visible on the surface of the concrete. This is not seen as a defect but proof that your item has added strength.

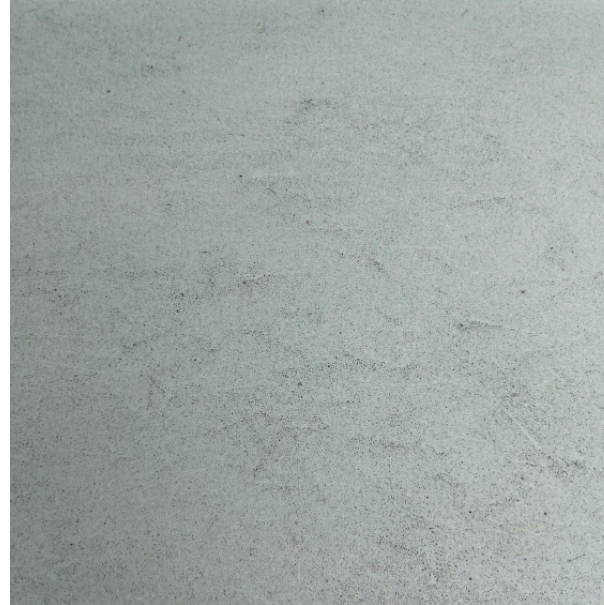




Exposed aggregates

The traditional mix of aggregates, sand and cement used to cast concrete means that this can sometimes be visible within the surface. This is not seen as fault but part of the natural patina and texture of the concrete.





Flow lines

Concrete is poured in a liquid state which means that textual flow lines can be expected at times. Flow lines are more common in curved items or taller vertical pieces. This is considered to be a typical characteristic of concrete.





Edge patination

More distinguished patination can occur on the edge of some of our concrete items, this is a raw textured look, please see the image for an example. This is a common characteristic of concrete and does not affect the structural integrity.





Crazing

During the life long curing process fine cracks on the surface of the concrete can occur and are very common. This does not affect the structural quality or performance of the concrete. These cracks are only minimal and the sealing process will ensure no internal problems occur.





If you have any further questions, please email us at
hello@smithandgoat.co.uk



SMITH & GOAT