



polyga H3

handheld 3D scanner



Best In Class

Leveraging the technology and experience in developing Polyga's stationary 3D scanning systems, the H3 produces one of the highest accuracy in a single-shot scan for a handheld system in its class.

The Polyga H3 is simply an all-round professional handheld 3D scanner that's easy to use, portable, and high-accuracy—all at an affordable price.

Reasons You'll Love the H3



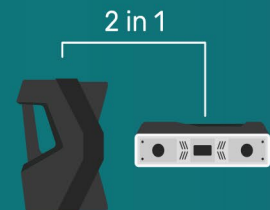
Handheld

The H3 is a point and shoot system. Move around the object to capture it into digital form. It's convenient to use and super portable.



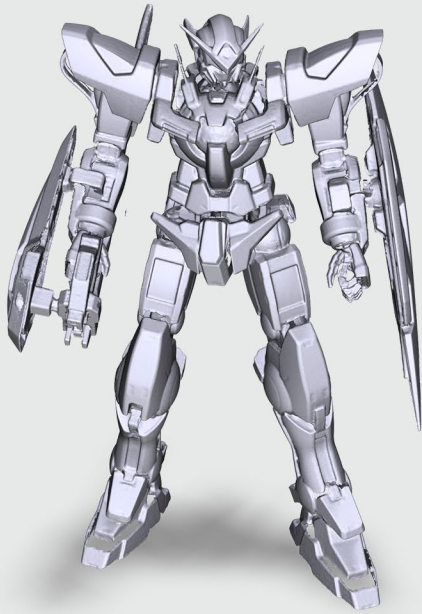
High-Accuracy


The H3 handheld 3D scanner produces 1.5 million points per scan with an accuracy of up to 80 microns (0.08 mm) per scan.



Hybrid

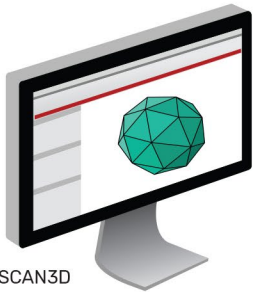
Simply mount the H3 on a tripod and it becomes a stationary system. It's completely handsfree and there's no need for calibration.




2 x Ultra - High Speed
Industrial Grade Cameras



BUILT FOR AGILITY



FLEXSCAN3D
SOFTWARE



POLYGA H3

The Polyga H3 is powered by FlexScan3D 3D scanning software that powers all Polyga's stationary 3D scanners. The software also works seamlessly with the H3. FlexScan3D's high-processing speed from capture to post-processing delivers a responsive and seamless 3D scanning experience.

ACHIEVE BETTER RESULTS

The H3 uses proprietary multi-image scanning patterns to capture 3D scans. That's why the quality of the H3 single 3D scan is better when compared to other systems in its class. You can see the difference.

VERSATILITY AT ITS CORE



The Polyga H3 scans objects into digital 3D models from 10 cm to 1.8 m in length.

Scan a variety of objects from artifacts, mechanical parts, faces, and even the entire body for industry applications including manufacturing, arts, archaeology, medical, computer vision, research, and design.

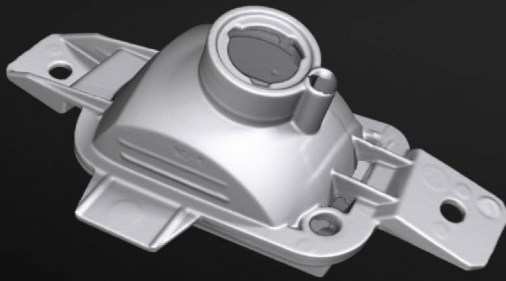
AUTOMATE 3D SCANNING

Transform from a handheld into a plug and play stationary 3D scanner. Simply mount the scanner on a tripod and use an optional rotary table for automated 3D scanning. It's completely handsfree and there's no need for calibration. Set up the scanner and let the system do all the work for you.

GET IT IN COLOR



The Polyga H3 is also available in color to capture color scans when high-quality color and texture information are important.



Mechanical Part



Figurine



Hand

POLYGA H3 **NEW**

Cameras	Monochrome or Color Cameras
Point-to-Point Spacing	0.5mm or better
Data acquisition speed (points per second)	Up to 1.5 million
Mesh Frames Per Second	5
Scanning Technology	Structured light
Dimension (mm)	280 x 200 x 60
Weight (kg)	1.1
Field of View (mm)	205 x 112 to 455 x 252
Depth of Field (mm)	250
Accuracy (µm)	80
Standoff distance (mm)	380
Scanning Software	FlexScan3D
Geometry Formats	PLY, OBJ, STL, ASC, FBX, 3D3
Minimum Computer Requirements	Windows 10 (64-bit) Operating System, Intel Core i5 CPU or better, 16 GB Memory or greater, 512 MB Video Card, 250 GB free disk space or more