

# MOTIVA<sup>®</sup>

AUDIO CORPORATION





## ABOUT US

We are an audio company built for you – Emotiva invests heavily in quality, design, and engineering to assure you that every Emotiva product will deliver best in class performance, at a fraction of comparable brands prices.

We invite you to compare Emotiva products to our competition. We think you'll find that anything even remotely comparable to Emotiva will be several times the price. And this goes for any metric; audio and video performance, aesthetics, design, quality, and finish. If you're shopping at our price point, we're the logical and compelling choice.

EMOTIVA

HDMI 6     ATMOS    Volume -49.0dB  
A: HDMI 6     TRUEHD    48kHz 24bits  
V: HDMI 6    2160P/24 8bits    YCbCr 4:4:4 SDR

Volume -49.0dB



STANDBY



RMC-1  
*Reference Music Controller*

STANDBY

RMC-1  
*Reference Music Controller*



# OUR PHILOSOPHY

---

When Emotiva started, we had one goal: to design and build exceptional, high performance products, and offer them at prices that everyone could afford and enjoy. Emotiva started with a simple question: “Why can’t we make amazing audio and video equipment at prices that don’t threaten our mortgages?”

And it was a good question to ask. As high-end audio brands chased an ever-shrinking market with even more costly gear, the price of sonic nirvana shot out of reach for the average customer. New audiophiles shook their heads and said, “You know, a sound bar may not be that bad.” Experienced audiophiles, said “enough is enough!”

At the same time high-end audio prices were climbing, Dan Laufman and his ODM team were helping some of the most prestigious names in audio manufacture their gear. Dan saw the inefficiencies in the system, along with the ever-climbing prices and unreasonable mark-ups, and decided to do something about it.

The result is Emotiva.

We know how much other brands mark up their products versus what they cost to make, and the striking difference between the two. At Emotiva, you can see a direct correlation between the build cost of every product and its retail price. This shows you in uncertain terms that you are buying products with the best possible value. We are real people that care about you and your satisfaction. We understand what it means to be an informed consumer. That is why we will always give you the best value; the first time, every time.



## A new Business Model - You First

At Emotiva you're in charge because we have a different approach to doing business. If you like the idea of designing and setting up your dream system yourself, you can purchase directly from us.

If you want expert advice and support from purchase to set up, or you just don't want to do it yourself, we have quality retail partners and experts able to assist you.

Make the purchase decision that's best for you. We think you'll agree this is the way to buy in the 21st century.

# AWARDS





EMOTIVA

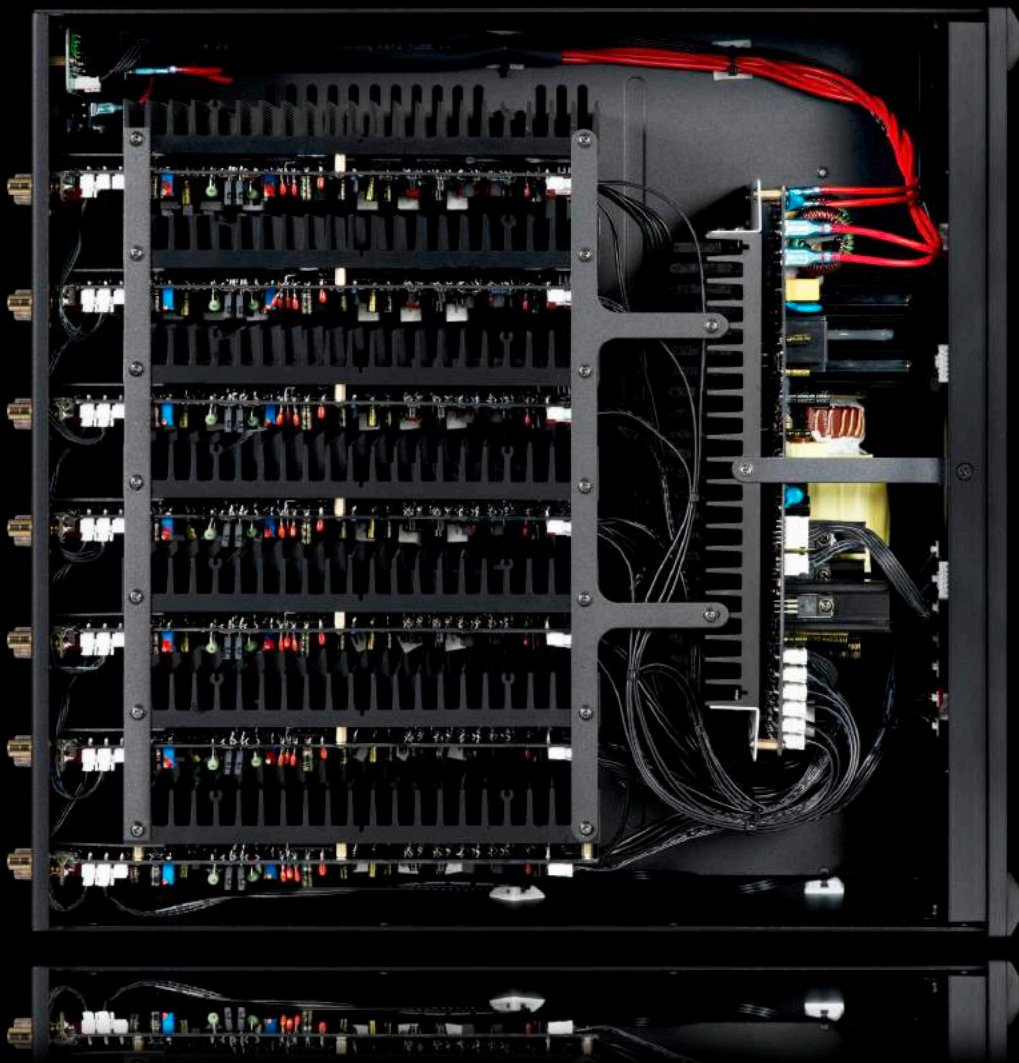


# OUR PRODUCTS

The goal of putting together an exceptional system is to enrich your life. It's all about the musical and cinematic experience. It isn't about spending a lot of money, or solid gold knobs, or jewel encrusted controls. And you don't need all sorts of complicated features you're never going to use. The key to building a great audio system is to use well-designed components with excellent technical performance, useful features, lasting quality, and superb sound quality.

Every Emotiva component has been designed from the ground up to be part of a premium audio system. They incorporate cutting edge technology, excellent build quality, and all the features you'll need to give you the best possible listening experience.





EMOTIVA

# X SERIES

---

Premium products for the discerning listener – Our finest products that take on the “best” of the best without breaking the budget.



XPA



R9X



## A new approach to amplifier design.

When we set out to make the new X Series line, we analyzed everything in every amplifier we've ever made, from front to back, inside, and out. We kept the best features of our original designs, added a new set of optimizations and improvements, and the result became the foundation of our new line of audiophile amplifiers. The XPA Gen 3 is a while new ballgame.

- True audiophile-quality sound
- Incredible sounding wideband, low distortion amplifier design
- Optimized Soft-Switch Class H™ power supply technology
- Switch Mode Power Supply (SMPS)
- Fully modular construction
- Designed and assembled in the USA

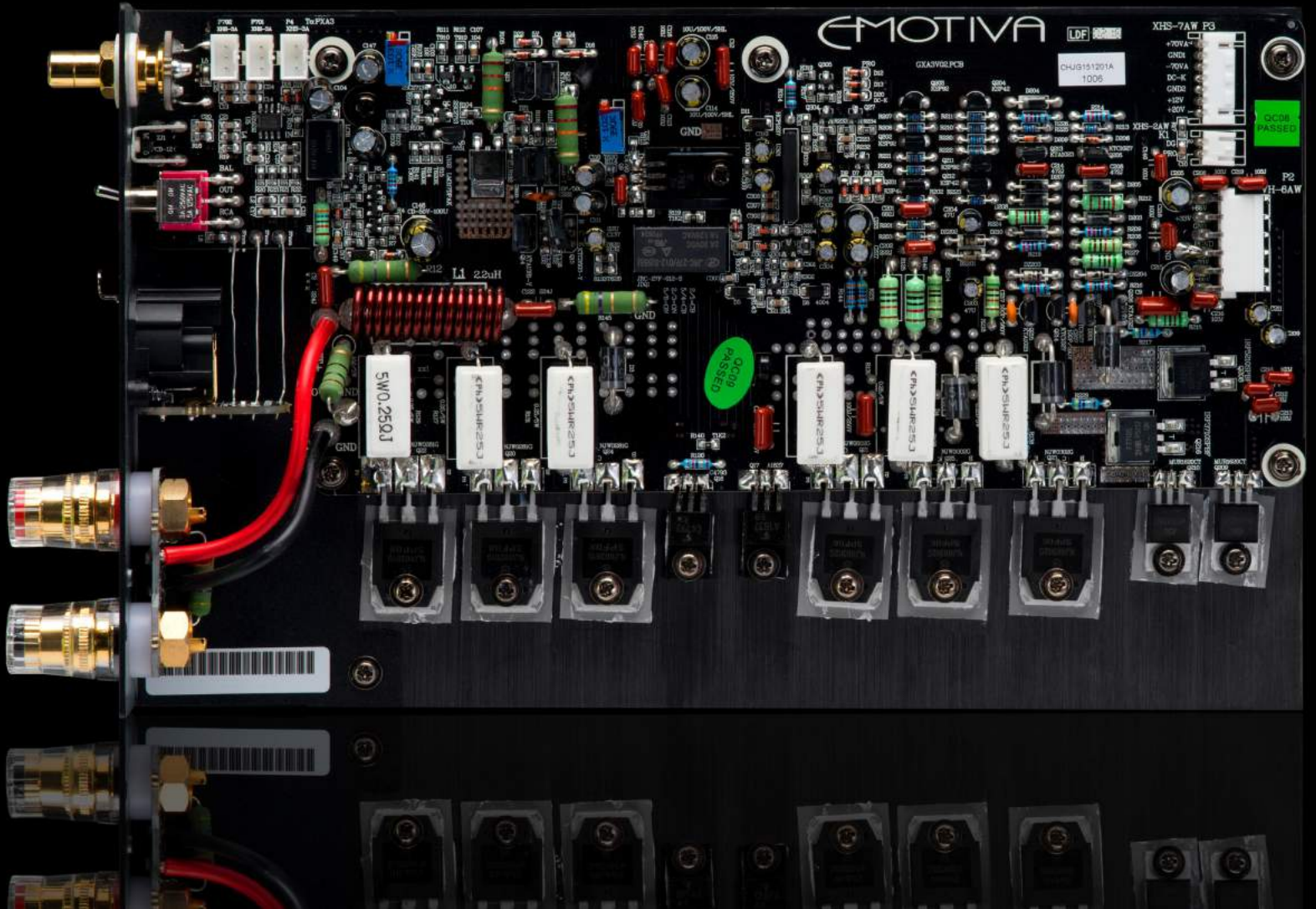
# X SERIES Differential Reference Amplifiers

---



Our XPA-DR amplifiers are all built on the same chassis, and features a special version of our massively over designed, heavy duty, fully regulated, switch mode power supply (SMPS). It has been optimized to supply power to our new high-powered fully-differential amplifier modules. The chassis can be populated with a single channel to create a true monoblock, with two channels – to power a superb stereo system or the front main speakers of a surround sound system, or with three channels – to power the front three channels of a no-holds-barred surround sound system.

(The system is fully modular, so you can add high-powered fully-differential channels as you need them – up to a total of three.)



# X SERIES ATMOS AMPS

---



The XPA Modular Amplifiers are the perfect platform for Dolby Atmos and DTS:X. Their ability to handle anything from 2 channels all the way up to 14 channels shows how incredible their adaptability is.

Mix and match any combination of mono or stereo modules to meet the need of your system. The XPA-11 is the ideal amplifier to power a surround sound system that utilizes three large speakers in the front (Left, Right, and Center) and eight smaller surround or height speakers – and the perfect amplifier for driving a Dolby Atmos 7.1.4 or 5.1.6 system.

# X SERIES

---



## RMC-1

Expandable 9.1.6 Reference  
Cinema Processor

Supports Dolby Atmos and DTS:X  
surround sound formats

Fully balanced, Differential Reference™  
design

18 Gbps bit-perfect HDMI supports Dolby  
Vision and HDR formats; 4K UHD 60Hz  
4:4:4

Expandable up to 28 channels

True 16 channel audio path with extensive  
bass management and post processing  
capability

Support for multichannel DSD

Full HDCP 2.2 support, ARC and CEC  
Support with HDMI 2.1

Front panels control via unique multi-axis  
encoder

Dual OLED programmable statue displays

Designed and assembled in the USA



## RMC-1L

9.1.6 Reference Cinema  
Processor

Supports Dolby Atmos and DTS:X  
surround sound formats

Fully balanced, Differential  
Reference™ design

18 Gbps bit-perfect HDMI  
supports Dolby Vision and HDR  
formats; 4K UHD 60Hz 4:4:4

True 16 channel audio path with  
extensive bass management and  
post processing capability

Support for multichannel DSD

Full HDCP 2.2 support, ARC and  
CEC Support with HDMI 2.1

Front panels control via unique  
multi-axis encoder

Dual OLED programmable statue  
displays

Designed and assembled in the  
USA



## XMC-2

9.1.6 Cinema Processor

Supports Dolby Atmos and DTS:X  
surround sound formats

Differential Reference™ design

18 Gbps bit-perfect HDMI  
supports Dolby Vision and HDR  
formats; 4K UHD 60Hz 4:4:4

True 16 channel audio path with  
extensive bass management and  
post processing capability

Support for multichannel DSD

Full HDCP 2.2 support, ARC and  
CEC Support with HDMI 2.1

Programmable OLED display

Designed and assembled in the  
USA

# X SERIES

---



## XPA Gen3

### Modular Amplifier System

True audiophile-quality sound

Amazing sounding wide-band, low distortion amplifier design

Optimized Soft-Switch Class H™ power supply topology

Switched Mode Power Supply (SMPS)

Fully modular construction, top quality parts and construction throughout

Heavy steel 4RU chassis with milled aluminum faceplate

Gold plated five-way speaker binding posts with clear shields

Solid machined gold-plated RCA input connectors

Choice of balanced or unbalanced inputs



## ERC-4

### Differential Reference™ CD Player / DAC

Plays all Red Book stereo audio CDs, HDCDs, MP3 CDs, and the Red Book layer of hybrid SACDs

Analog Devices AD1955 high-performance DAC with multiple stage isolated power supplies

Both balanced and unbalanced analog outputs

Toslink optical, coax, and AES/EBU outputs

Toslink optical and coax digital inputs with 24/192 capability

Extensively shielded and partitioned chassis, minimizes interference and vibrations

High-reliability tray loading mechanism

Premium construction with all metal chassis and milled aluminum faceplate



EMOTIVA





# Airmotiv

Experience the full range of emotions with our best loudspeakers - Engaging, musical, organic and accurate speakers that transport you to your favorite music hall or movie theater. Get up close and personal with your favorite artists and movies.

# Airmotiv



## T1+

### Tower Loudspeaker

Airmotiv™ high-frequency transducers

Advanced woven fiber midrange transducers

Advanced woven fiber low-frequency transducers

Minimum Acoustic Signature™ cabinet

Precision LC crossover

Frequency response: 35 Hz - 28 kHz (+3/-3 dB)

Efficiency: 91 dB



## T2+

### Tower Loudspeaker

Airmotiv™ high-frequency transducers

Advanced woven fiber midrange transducers

Advanced woven fiber low-frequency transducers

Minimum Acoustic Signature™ cabinet

Precision LC crossover

Frequency response: 35 Hz - 28 kHz (+3/-3 dB)

Efficiency: 91 dB



## T3+

### Tower Loudspeaker

Airmotiv™ high-frequency transducers

Advanced woven fiber midrange transducers

Advanced woven fiber low-frequency transducers

Minimum Acoustic Signature™ cabinet

Precision LC crossover

Frequency response: 28 Hz - 28 kHz (+3/-3 dB)

Efficiency: 94 dB

# Airmotiv



## C1+ Center Loudspeaker

Airmotiv™ high-frequency transducers

Advanced woven fiber midrange transducers

Advanced woven fiber low-frequency transducers

Minimum Acoustic Signature™ cabinet

Precision LC crossovers

Gold plated Bi-amp capable speaker terminals

Frequency response: 50 Hz - 28 kHz (+3/-3 dB)

Efficiency: 89 dB



## C2+ Center Loudspeaker

Airmotiv™ high-frequency transducers

Advanced woven fiber midrange transducers

Advanced woven fiber low-frequency transducers

Minimum Acoustic Signature™ cabinet

Precision LC crossover

Gold plated Bi-amp capable speaker terminals

Frequency response: 45 Hz - 28 kHz (+3/-3 dB)

Efficiency: 92 dB



## C3+ Center Loudspeaker

Airmotiv™ high-frequency transducers

Advanced woven fiber midrange transducers

Advanced woven fiber low-frequency transducers

Minimum Acoustic Signature™ cabinet

Precision LC crossover

Gold plated Bi-amp capable speaker terminals

Frequency response: 40 Hz - 28 kHz (+3/-3 dB)

Efficiency: 96 dB

# Airmotiv

---



## B1+

Bookshelf Loudspeaker

Airmotiv™ high-frequency transducers

Advanced woven fiber low-frequency transducers

Minimum Acoustic Signature™ cabinet

Precision crossovers

Frequency response: 48 Hz - 28 kHz (+3/-3 dB)

Efficiency: 86 dB



## B2+

Bookshelf Loudspeaker

Airmotiv™ high-frequency transducers

Advanced woven fiber low-frequency transducers

Minimum Acoustic Signature™ cabinet for Atmos Reflecting, Height, or surround applications

Mode Switch for Direct or Reflecting

Precision crossovers

Frequency response: 55 Hz - 28 kHz (+3/-3 dB)

Efficiency: 88 dB

# Airmotiv

---



## A1

Atmos Reflecting/Height  
Loudspeaker

Airmotiv™ high-frequency  
transducers

Advanced woven fiber low-frequency  
transducers

Minimum Acoustic Signature™  
cabinet for Atmos Reflecting, Height,  
or surround applications

Mode Switch for Direct or Reflecting

Precision crossovers

Frequency response: 65 Hz - 28 kHz  
(+3/-3 dB)

Efficiency: 85 dB



## A2

Surround / Height/ Ceiling  
Loudspeaker

Airmotiv™ high-frequency  
transducers

Advanced woven fiber low-frequency  
transducers

Minimum Acoustic Signature™  
cabinet for ceiling, height, or surround  
applications

Precision crossovers

Frequency response: 60 Hz - 28 kHz  
(+3/-3 dB)

Efficiency: 87 dB

# Airmotiv

---



## XS15

15" Subwoofer

A powerful 750 watt RMS

High current torodial power supply

Unique input/output capabilities allow easy integration with home theater and hi-fi systems

Complete 2.1 line level bass management capabilities with RCA outputs

Advanced multi-stage limiter

Forward firing passive radiator

Frequency response: 25 Hz - 150 Hz (+3/-3dB)



## XS12

12" Subwoofer

A powerful 500 watt RMS

High current torodial power supply

Unique input/output capabilities allow easy integration with home theater and hi-fi systems

Complete 2.1 line level bass management capabilities with RCA outputs

Advanced multi-stage limiter

Forward firing passive radiator

Frequency response: 30 Hz - 150 Hz (+3/-3dB)



## XS10

10" Subwoofer

A powerful 350 watt RMS

High current torodial power supply

Unique input/output capabilities allow easy integration with home theater and hi-fi systems

Complete 2.1 line level bass management capabilities with RCA outputs

Advanced multi-stage limiter

Forward firing passive radiator

Frequency response: 35 Hz - 150 Hz (+3/-3dB)



## XS8

8" Subwoofer

A powerful 250 watt RMS

High current torodial power supply

Unique input/output capabilities allow easy integration with home theater and hi-fi systems

Complete 2.1 line level bass management capabilities with RCA outputs

Advanced multi-stage limiter

Forward firing passive radiator

Frequency response: 40 Hz - 150 Hz (+3/-3dB)

# Airmotiv

---



## SE12

12" Subwoofer

A powerful 500 watt RMS audiophile quality Class D amplifier

High current toroidal power supply

Flexible input and control options

Advanced multi-stage limiter

Downward firing active driver and forward firing passive radiator

Non-pressed treated paper cones on both drivers

Powerful heavy duty motor assembly

Frequency response: 24 Hz - 120 Hz (+3/-3dB)



## SE8

8" Flex Subwoofer

A powerful 200 watt RMS audiophile quality Class D amplifier

High current switch-mode power supply (SMPS)

Unique input/output capabilities allow easy integration with home theater and hi-fi systems

Complete 2.1 line level bass management capabilities with RCA outputs

Advanced multi-stage limiter

Downward firing active driver and forward firing passive radiator

Frequency response: 33 Hz - 150 Hz (+3/-3dB)



# BasX

---

The foundation of a superb music or home theater system – These affordable audiophile products offer ultra high performance at easy on the wallet prices.

# BasX

---



## MC1

13.2 Channel Dolby Atmos® & DTS:X™ Cinema Processor

Support for all popular surround sound formats

A high-quality headphone amp

Comprehensive real-time status information

Advanced Emo-Q™ automatic multi-channel room correction

Last Video Memory

Video-On-Standby

Flexible quadruple bass management

Powerful manual equalization controls

Balanced and unbalanced subwoofer outputs



## TA1

Stereo Preamp/DAC/Tuner with integrated amplifier

Highly optimized double sided circuit layout

Sensitive FM tuner

A full complement of analog and digital inputs

Intelligent headphone level control

Audiophile quality, fully complementary, all discrete Class A/B amplifier

Precision digital conversion

Bass and Treble controls

•Power Output: 60 watts RMS/channel; 8 Ohms; both channels driven; 20 Hz – 20 kHz; THD < 0.02%.

Broad Band Frequency Response: 20 Hz to 20 kHz +/- 0.15 dB; 5 Hz to 80 kHz +0/-1.8 dB.

S/N Ratio (8 ohm): > 116 dB



## PT1

Stereo Preamp/DAC/Tuner

Highly optimized double sided circuit layout

Sensitive FM tuner

A full complement of analog and digital inputs

Intelligent headphone level control

Precision digital conversion

Bass and Treble controls

Full function remote control

Subwoofer outputs

Headphone output

Flexible menu system

Heavy steel 2RU chassis with milled aluminum face plate

# BasX



## A1 Monoblock Power Amplifier

Power Output: 200 watts / channel  
RMS; 8 Ohms; 20 Hz - 20 kHz

•Broad Band Frequency Response: 5  
Hz to 80 kHz +0/-1.8 dB.

•THD + noise: < 0.02% (A-weighted);  
ref rated power.

S/N Ratio (8 ohm): > 112 dB;  
referenced to rated power; (A-  
weighted).



## A2 Stereo Amplifier

Power Output: 160 watts RMS per  
channel; 20 Hz - 20 kHz; THD < 0.1%;  
into 8 Ohms

Broad Band Frequency Response: 10  
Hz to 80 kHz (+ / - 1.8 dB)

S/N Ratio (8 ohm): 112 dB (A-  
weighted); ref rated power



## A3 3-Channel Power Amplifier

Power Output: 140 watts RMS per  
channel; 20 Hz - 20 kHz; THD < 0.1%;  
into 8 Ohms

Broad Band Frequency Response: 10  
Hz to 80 kHz (+ / - 1.8 dB)

S/N Ratio (8 ohm): 112 dB (A-  
weighted); ref rated power



## A4 4 Channel Amplifier

Power Output: 80 watts RMS per  
channel; 20 Hz - 20 kHz; THD < 0.1%;  
into 8 Ohms

Broad Band Frequency Response: 5 Hz  
to 80 kHz (+ / - 1.8 dB)

S/N Ratio (8 ohm): 120 dB (A-  
weighted); ref rated power



## A5 5-Channel Amplifier

Power Output: 90 watts RMS per  
channel; 20 Hz - 20 kHz; THD < 0.1%;  
into 8 Ohms

Broad Band Frequency Response: 10  
Hz to 80 kHz (+ / - 1.8 dB)

S/N Ratio (8 ohm): > 112 dB; ref rated  
power; (A-weighted).



## A6 6-Channel Amplifier

Power Output: 90 watts RMS per  
channel; 20 Hz - 20 kHz; THD < 0.1%;  
into 8 Ohms

Broad Band Frequency Response: 10  
Hz to 80 kHz (+ / - 1.8 dB)

S/N Ratio (8 ohm): > 112 dB; ref rated  
power; (A-weighted).



## A7 7-Channel Amplifier

Power Output: 80 watts RMS per  
channel; 20 Hz - 20 kHz; THD < 0.1%;  
into 8 Ohms

Broad Band Frequency Response: 5  
Hz to 80 kHz (+ / - 1.8 dB)

S/N Ratio (8 ohm): 120 dB  
(A-weighted); ref rated power



## A2m Stereo Flex Amplifier

Power Output: 50 watts RMS per  
channel; 20 Hz - 20 kHz; THD < 0.1%;  
into 8 Ohms.

Broad Band Frequency Response: 10  
Hz to 80 kHz +0/-1.8 dB.

S/N Ratio (8 ohm): > 112 dB; ref rated  
power; (A-weighted).



# emotiva.com

---

Emotiva Audio Corporation  
135 SE Parkway Court  
Franklin, TN 37064  
USA

1.615.790.6754  
sales@emotiva.com