

Contents

OUR STORY	1
JEWELRY	2
CLEANING STAINLESS STEEL JEWELRY	3
MAINTAINING AND STORING STAINLESS STEEL JEWELRY	4
INTERNATIONAL LIMITED WARRANTY FOR JEWELRY	4
STRAPS AND STRAP CHANGING	7
WATCH WATER RESISTANCE	7
WATCH TIME SETTING	9
CHRONOGRAPH JS15	10
CHRONOGRAPH STOPWATCH VD55	12
HOW TO ADJUST MESH STRAP	14
CLOSING THE CLASP OF YOUR WATCH	15
HOW TO CHANGE LEATHER STRAP	16
LIMITED 24 MONTHS WARRANTY FOR WATCHES	17
DISPOSAL AND RECYCLING INFORMATION	19
EASY ACCESS TO MANUAL ONLINE	21
ACCÈS FACILE AU MANUEL EN LIGNE	22
FÁCIL ACCESO AL MANUAL EN LÍNEA	23
EINFACHER ZUGRIFF AUF ONLINE HANDBUCH	24

USER MANUAL

THANK YOU!

Thank you for purchasing an Emily Westwood product! We believe it will serve you well and you will experience many special moments with it. We hope you enjoy this product and share your moments with it with us on social media. It is our desire to keep you satisfied with our products. You are our inspiration to do our very best. Thank you and remember: We value you!

OUR STORY

There is only one world. It is singular and unique, full of rivers and mountains, forests and oceans, flowers and woods, the moon, the stars and the sky. Millions of years have gone by, seasons change but the magnificent natural beauty of our world remains. There is only one you in the whole world. Only one and exceptional—only one and unique. As time goes by, your thoughts and dreams may change, but your beauty remains. At Emily Westwood, we take our inspiration from nature, from the magnificent beauty of our world. We believe there is no better designer than nature, where even the simplest things are stunningly beautiful.

Our purpose is to find the most beautiful shades of nature and imbue them in our products, so you forever keep a part of our beautiful world with you. Let the beauty of nature in our products accompany you in your life. They invite you to stop and enjoy the moment by closing your eyes, imagining yourself in a beautiful place, taking a deep breath, relaxing and taking in the abundance of life, because you are as beautiful as our world. The beauty of a sunset tells us that another day has ended and gives us a promise of a new dawn... The beauty of sunrise tells us that it is a new beginning of your journey in this amazing world... Be inspired by the beauty of nature. Let the beauty into your soul knowing that you are a part of something brilliant—that you are a part of our amazing world...

JEWELRY

Emily Westwood Jewelry products are made from high quality materials, including stainless steel, genuine crystals, glass pearls, and semi-precious gemstones. The quality control team tests the jewelry pieces against quality standards and ensures that the customer receives only the highest quality products. Proper care of your Emily Westwood stainless steel jewelry will help maintain its beauty over time. Stainless steel jewelry is made of a pure stainless steel of the highest quality.

The greatest quality of stainless steel is that it does not corrode or rust. Although it is also very durable, this type of steel can scratch and stain. As such, you should follow some simple rules to keep your stainless steel jewelry in good condition.

CLEANING STAINLESS STEEL JEWELRY

Stainless steel jewelry is quite easy to clean. Simply follow these steps:

1. Pour some warm water in a small bowl, and add some mild dishwashing soap.
2. Dip a soft, lint-free cloth in the soapy water, and then gently wipe the stainless steel jewelry with the damp cloth until the piece is clean. When cleaning it, rub the item along its polish lines.
3. Wipe the remaining soap off your jewelry using a moist cloth dipped in
4. Dry the jewelry well with a clean towel, and then leave your pieces to

After your stainless steel jewelry is clean, you can use a jewelry polish or a polishing cloth to shine it.

MAINTAINING AND STORING STAINLESS STEEL JEWELRY

Although stainless steel jewelry does not tarnish or corrode and no special care is required, it can scratch. That is why you should wear and store your pieces in a way that minimizes any contact with other items that can damage your stainless steel jewelry.

If your jewelry does become scratched, you can always have it professionally polished by a jeweler.

Store your stainless steel pieces separately from jewelry made of other metals. It is best if you keep your stainless steel items in individual bags or pouches.

INTERNATIONAL LIMITED WARRANTY FOR JEWELRY

Emily Westwood Jewelry provides a limited warranty for its products purchased from any authorized Emily Westwood Jewelry retailer. This limited warranty covers manufacturing defects in the products only.

WARRANTY LIMITATIONS

This limited warranty does not extend to any Emily Westwood Jewelry products for which no warranty documentation was provided at the point of sale. In addition, the warranty does not cover, without limitation,

damages caused by accidents, exposure to chemicals, dyes, water damage, heat or fire, modification, inappropriate use (regardless of whether such uses are foreseen or unforeseen), abuse or neglect, attempted repair, normal wear and tear, aging, improper care or cleaning, loss or theft of any kind, the determination of which shall be at the sole discretion of Emily Westwood.

The limited warranty is valid for a period of 12 months from the date of purchase. In order to make a claim under this limited warranty, you must return the original purchase receipt and this warranty document, along with the defective product to your original place of purchase along with your name, mailing address and daytime contact information (telephone & e-mail). The warranty shall be void if (a) the product is returned to any location other than the original place of purchase, or (b) the original receipt or this warranty document are not included with the returned product as, combined, they serve as the official warranty for your Emily Westwood Jewelry product. At the discretion of Emily Westwood, any Emily Westwood Jewelry piece which is determined to be covered by this warranty and has been returned in compliance with the requirements above will be either repaired (subject to the extent of the defect, capability of repair and availability of parts), replaced with

the same Emily Westwood Jewelry piece, or substituted for a Emily Westwood Jewelry piece of equal or greater value. Store credit or refunds are not available and unfortunately, we are not able to guarantee that you will receive the exact same product or design for any replacements.

If any claim submitted is not covered by this warranty, the Emily Westwood Jewelry piece and all documentation submitted will be returned to you at the mailing address provided in your warranty claim.

If a damaged product is not covered by the terms of the Emily Westwood Jewelry warranty policy, repair services may be available for a fee. Please note that a damaged piece can only be repaired if the repair is feasible and spare parts are still available. Please contact your original place of purchase of your Emily Westwood Jewelry product if you are interested in this service.

WATCHES

STRAPS AND STRAP CHANGING

Emily Westwood only uses natural leather straps of high quality that are easy to change. In order to change your watch strap for another Emily Westwood strap, please use the guide on our website:

<http://emilywestwood.com/pages/changestrap>

WATCH WATER RESISTANCE

People are often confused by what watch water resistance actually means. Does a watch with a 50-meter water resistance mean you can dive with it as deep as 50 meters? No, you cannot. So why do they write 50 meters on it? Because it is referring to static pressure, not the actual depth of water it can be used in. This is a common misconception. 50 meters refers to the pressure experienced if it was static at a depth of 50 meters. When the watch moves the pressure rises well above a static pressure of 50 meters. 50 meters of static water pressure is easily achieved even in shallow depths. Consequently, a 50-meter watch should not be used for diving; however, it can be immersed in water.

Here are some common explanations of common water resistance standards:

10 meters / 1 ATM Water resistant means splash proof only - it can withstand slight splashes and rain, but is NOT to be immersed in water.

30 meters / 3 ATM Splash proof and waterproof in small amounts of water.

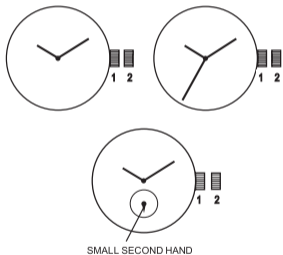
50 meters / 5 ATM Can be submerged in water. Suitable for swimming, but not guaranteed to be resistant to jumping into the pool.

100 meters / 10 ATM Suitable for swimming and shallow diving.

200 meters / 20 ATM Suitable for diving - not deep sea.

WATCH TIME SETTING

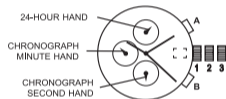
ANALOG INSTRUCTIONS



Time Setting

1. Pull crown out to position 2.
2. Turn crown to set the hour and minute hands to desired time.
3. Return crown to position 1.

CHRONOGRAPH JS15



Time and Date Setting

1. Pull crown out to position 2.
2. Rotate crown clockwise until the previous day's date is shown in the date window.
3. Pull crown out to position 3.
4. Rotate crown clockwise until the correct date is shown in the date window.

5. Continue to rotate crown to set correct am/pm time.

NOTE: 24-hour hand moves correspondingly with the hour and minute hands. When setting the time, be sure to check that the 24-hour hand is set properly.

6. Return crown to position 1.

NOTE: When the crown is in position 2, do not press the pushers. Otherwise, the chronograph hands will move.

NOTE: Do not set the date between 9:00 p.m. and 1:00 a.m. to ensure accuracy.

Chronograph

1. Press A to start/stop the chronograph
2. Press B to reset to zero.

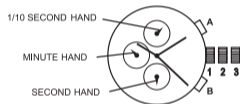
Chronograph Zero Reset

1. If either of the chronograph hands is not at the zero (12:00) position, pull crown out to position 3.
2. Press A to move hands clockwise; press B to move hands counter-clockwise. Each press of A or B will move the chronograph hands by one increment/decrement. Alternatively, press and hold A or B for fast increment/decrement.

3. When both hands are in the zero position, reset time and return crown to position 1.

NOTE: Chronograph minute hand will synchronize with chronograph second hand during chronograph zero reset.

CHRONOGRAPH STOPWATCH VD55



Time Setting

1. Pull crown out to position 3.
2. Set time by turning crown clockwise.
3. Return crown to position 1 to start watch.

Using the Stopwatch

1. Press A to start/stop the stopwatch.
2. Press B to control the split time and reset.

Stopwatch Hand Adjustment

1. Pull crown out to position.
2. Press A to reset the stopwatch 1/10 second hand to the "0" position.
3. Press B to reset the second and minute hands. The hands only move clockwise.
4. With each press of A or B, the hands move one position. They move quickly if the buttons are kept pressed.

NOTE: If the stopwatch hands function improperly, pull out crown and press A and B at the same time for over 2 seconds. When the buttons are released, the stopwatch second and 1/10 second hands will spin around and return to "0." This will indicate that the same time for over 2 seconds. When the buttons are released, the stopwatch second and 1/10 second hands will spin around and return to "0." This will indicate that the internal circuit has been reset.

Date Setting (on some models only)

1. Pull crown out to position 2.
2. Turn clockwise until desired date appears in window.
3. Return crown to position 1.

HOW TO ADJUST MESH STRAP

1. Insert the adjustment tool (it can be simple screwdriver or small knife) into the slot and lift up the plate clamp.



2. On the reverse side, slide the locking clasp to the desired position to adjust the length of the strap.



3. Press the plate clamp back down (firmly) to lock the clasp to the mesh strap.



CLOSING THE CLASP OF YOUR WATCH

1. Hook the top part of the clasp onto the thin metal bar.



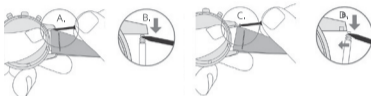
2. Snap the closure on.



3. Clasp the cover over to securely close your mesh watch.



HOW TO CHANGE LEATHER STRAP



1. Use the small knife and place it between the lug and the strap to reach the metal pin. (See picture A)

2. Push down to release the spring and remove the strap. (See picture B)

3. Move the pins from the old to the new strap.

4. Place the pin end to the lug hole. (See picture C)

5. Use the small knife again to push down on the spring so that the pin end reaches the hole for fastening. (See picture D)

LIMITED 24 MONTHS WARRANTY FOR WATCHES

Emily Westwood provides a warranty for your Emily Westwood Watch for a period of twenty-four (24) months from the date of purchase under the terms and conditions of this warranty. The international Emily Westwood warranty covers material and manufacturing defects existing at the time of the purchase of the Emily Westwood Watch ("defects"). The warranty only comes into force if the warranty certificate is dated, fully and correctly completed and stamped by an official Emily Westwood dealer** ("valid warranty certificate"). During the warranty period and by presenting the valid warranty certificate, you will have the right to have any defect repaired free of charge. In the event that repairs do not restore the normal conditions of use to your Emily Westwood watch, or if you purchased an Emily Westwood Watch and whose case cannot be opened, Emily Westwood guarantees its replacement by an Emily Westwood Watch of a similar model. The warranty for the replacement watch ends twenty-four (24) months after the date of purchase of the replaced watch.

This manufacturer warranty does not cover:

- the life of the battery;
- normal wear and tear and aging (e.g. scratched crystal; alteration

of the color and/or material of non-metallic straps and chains, such as leather, plastic, textile, Velcro; peeling of the plating);

- any damage to any part of the watch resulting from abnormal/abusive use, lack of care, negligence, accidents (knocks, dents, crushing, broken crystal, etc.), incorrect use of the watch and non-observance of the directions for use provided by Emily Westwood;
- indirect or consequential damages of any kind resulting from e.g. the use, the non-functioning, the defects or the inaccuracy of the Emily Westwood Watch;
- any Emily Westwood Watch handled by non-authorized persons (e.g. for battery replacement, services or repairs) or which undergoes alterations in its original condition beyond Emily Westwood Ltd's control. Any further claim against Emily Westwood e.g. for damages additional to the aforementioned warranty is expressly excluded, except for any mandatory statutory rights the purchaser may have against the manufacturer.

The above manufacturer warranty:

- is independent of any warranty that may be provided by the vendor, for which the same bears sole responsibility.

- does not affect the purchaser's rights against the vendor or any other mandatory statutory rights the purchaser may have. The Emily Westwood customer service ensures the perfect maintenance of your Emily Westwood Watch. If your watch needs attention, contact an Emily Westwood official dealer or an authorized Emily Westwood Service Center as only they can guarantee service according to Emily Westwood's standards.

For warranty repairs, please contact us:
service@emilywestwood.com

DISPOSAL AND RECYCLING INFORMATION

The symbol on the product or its packaging signifies that it must be disposed of separately from ordinary household waste at its end of life. Please be aware that it is your responsibility to dispose of electronic equipment at recycling centers to help conserve natural resources. Each country in the European Union should have collection centers for electrical and electronic equipment recycling. For information about your recycling drop-off point, please contact your local electrical and electronic equipment waste management authority, or the retailer where you purchased the product.

- Do not dispose your Emily Westwood product with household waste.
- Disposal of the packaging and your Emily Westwood product should be done in accordance with local regulations.
- Batteries are not to be disposed of in the municipal waste collection and require separate disposal.



WARRANTY

Retailer (stamp, or name and address):



Model No.

Purchase place (country) & date:

SERVICE INFORMATION:

Please contact us for information regarding repairs and warranty by emailing:

service@emilywestwood.com

EASY ACCESS
TO MANUAL ONLINE



Scan me for instructions of use, or visit us online at
<https://www.emilywestwood.com/pages/watches-manuals>

21

ACCÈS FACILE
AU MANUEL EN LIGNE



Scannez-moi pour obtenir le mode d'emploi,
ou visitez-nous en ligne à l'adresse suivante
[//www.emilywestwood.com/pages/watches-manu](https://www.emilywestwood.com/pages/watches-manu)

22

FÁCIL ACCESO
AL MANUAL EN LÍNEA



Escanéame para obtener instrucciones
de uso o visítanos en línea en
www.emilywestwood.com/pages/watches-man

EINFACHER ZUGRIFF
AUF ONLINE-HANDBUCH



Scannen Sie für die Gebrauchsanleitung
bitte den Code oder besuchen Sie uns unter
<https://www.emilywestwood.com/pages/watches-manuals>



FOLLOW US:
Instagram [@emilywestwoodofficial](#)
Facebook [@emilywestwoodofficial](#)