

RVH8224

UNDERMOUNT WORKSTATION SINK

RUVATI®

SPECIFICATION SHEET

MATERIAL

True 16 Gauge Thickness
Premium T304 Grade Stainless Steel
18/10 Chromium/Nickel Content
Commercial Brushed Finish

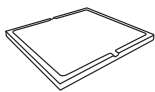


FEATURES

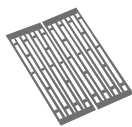
- Heavy duty sound guard padding and undercoating
- Slanted bottom with elegant drain grooves for easy draining
- Dual-Tier Ledge for Accessories



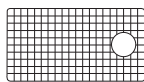
IN THE BOX



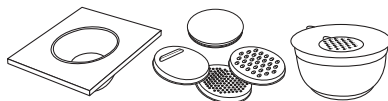
Cutting Board
[RVA1233BWC]



Folding Rack
[RVA1397]



Rinse Grid
[RVA68222]



Mixing Bowl and Platform
[RVA1288BWC]



Basket Strainer
[RVA1025]



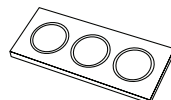
Drain Cover
[RVA1035]



Mounting Clips
[RVA11031]



Cut-out
Template



Condiment
Serving Tray
[RVA1377BWC]

NOMINAL DIMENSIONS

Exterior: 33½" (wide) x 19" (front-to-back)
Interior Bowl: 31⅞" (wide) x 16" (front-to-back)
Bowl Depth: 10"
Minimum Cabinet Size: 36" wide
Drain Hole Size: 3½"

Installation Type:
Undermount

Inside Corners:
Zero Radius

Drain Location:
Offset

RUVATI USA

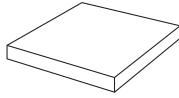
www.ruvati.com

Phone: 1.855.478.8284
Email: support@ruvati.com

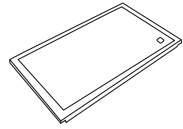
OPTIONAL ACCESSORIES (SOLD SEPARATELY)



Deep Basket
Disposal Flange
[RVA1049ST]

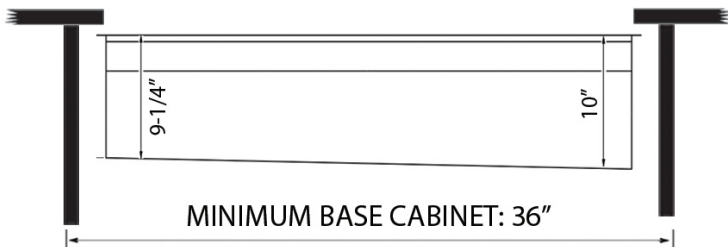
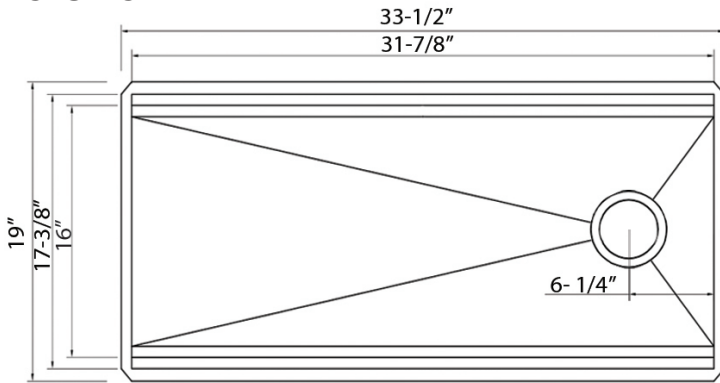


Butcher Block
[RVA2445ACA]



Black Plastic
Cutting Board
[RVA1217BLK]

DIMENSIONS



Register your product at www.ruvati.com/register.