

BOCCHI®

PAGANO 2.0

PULL-DOWN KITCHEN FAUCET



D|S
DIRECT SINKS

Product Code

2024 0001 XX

FEATURES:

- 35 mm ceramic disc valve cartridge
- Cartridge working life: >500,000 times
- Lead-Free faucet body, contains $\leq 0.25\%$ total lead content by weighted volume
- Maximum flow rate = 1.8 gpm (6.8 l/min) at 72 psi
- Spout swivels 360°
- Standard or Needle Spray with weighted shower hose
- 90° forward handle
- Includes flexible inlet hoses, each 24"
- Stabilizer flange included
- Extended 3.5 in shank

WEIGHT: 3.5 lbs

AVAILABLE FINISHES:

- CH - Chrome
- SS - Stainless Steel
- MB - Matte Black
- BG - Brushed Gold

DIMENSIONS:

Spout length = 8.94 in (227.1 mm)

Spout height = 9.4 in (238.7 mm)

Overall Faucet height = 14.9 in (378.4 mm)

OPTIONAL ACCESSORIES:

2180 0003 - Contemporary Deck Plate

2180 0004 - Traditional Deck Plate

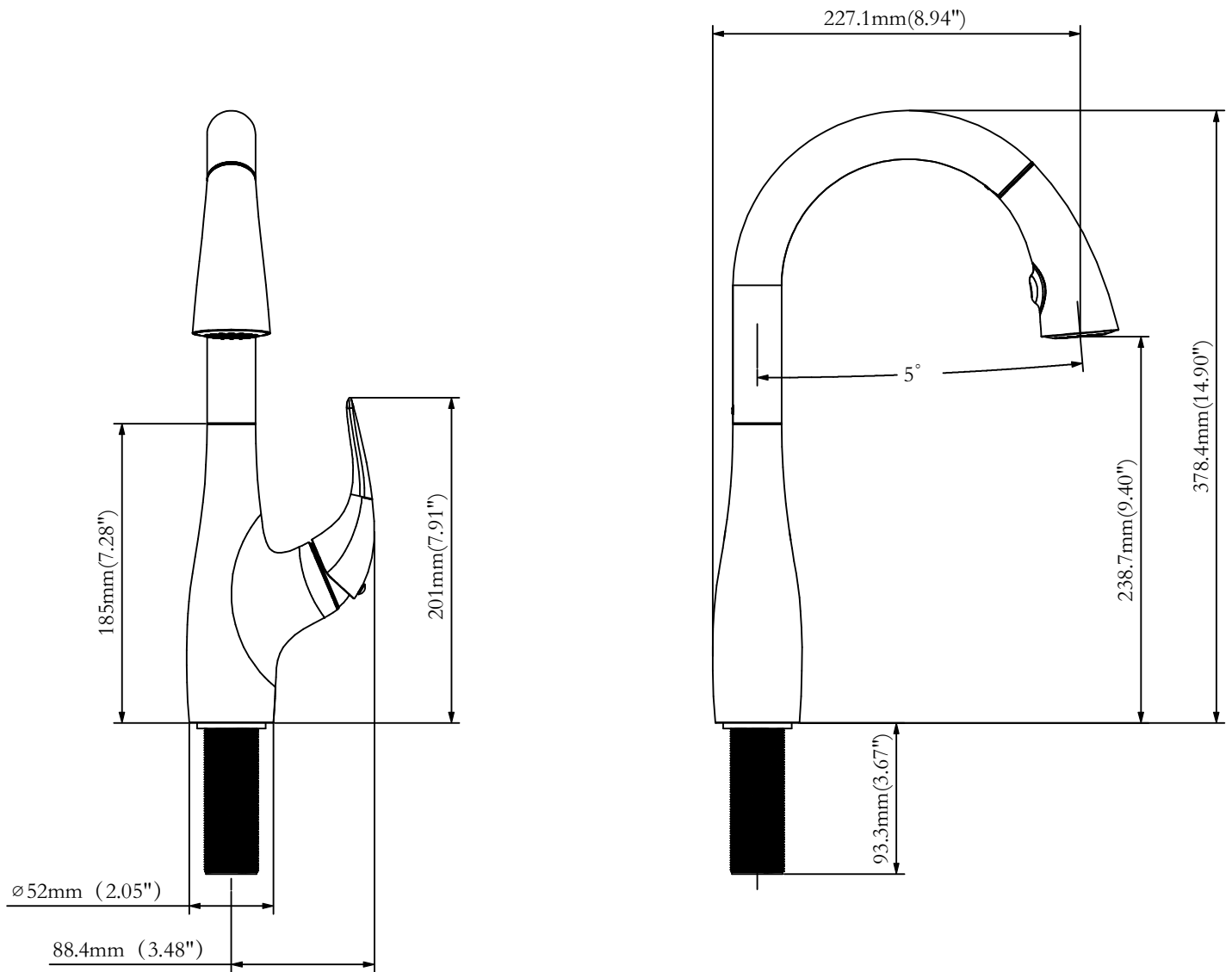
2340 0005 - Lesina Soap Dispenser

2340 0006 - Tronto 2.0 Soap Dispenser

CODES / STANDARDS:

ASME A112.18.1 / CSA B125.1 / NSF 61 / NSF 372 / AB1954 / DOE - Energy Policy Act 1992 / CEC - California Energy Consumption / Meets CalGreen requirements for kitchen faucets

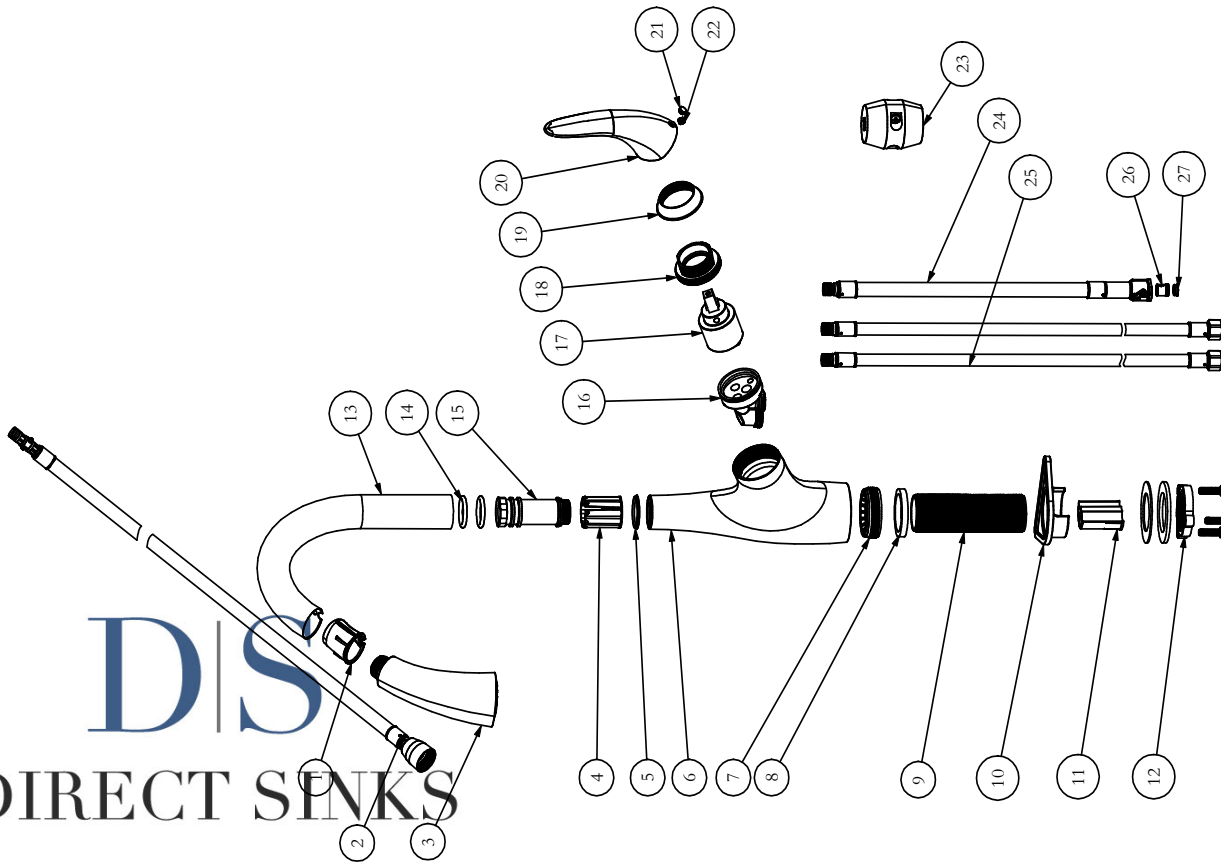
BOCCHI®



D|S DIRECT SINKS

IMPORTANT: These measurements are subject to change or cancellation. No responsibility is assumed for use of superseded or voided pages. BOCCHI reserves the right to make revisions without notice to product specifications.

27	121010481019	Flow Regulator	POM	1
26	N10X10_5X03	Check Valve	PP	1
25	999910060483	Inlet Hose Assembly	SUS304+PVC	2
24	999910061139	Outlet Hose Assembly	TPE+PVC	1
23	999910101762	Weight	PP+Iron	1
22	C5X5X03M	Screw	SUS304	1
21	12111171013	Cap	Silicone	1
20	121010210058	Handle	Zinc Alloy	1
19	121010211002	Decorative Cover	ABS	1
18	121010211031	Nut	Brass	1
17	999910091310	Cartridge Assembly	POM	1
16	121010211038	Cartridge Seat	PPA+50%GF	1
15	121010211032	Spindle	Aluminium Alloy	1
14	R21X3_5X02	O-ring	EPDM	2
13	121010211035	Spout	SUS304	1
12	121010221021	Mounting nut assembly	Aluminium Alloy+SUS304+NBR	1
11	121010481009	Pipe sleeve	POM	1
10	113110411013	Stabilizer gasket	POM	1
9	121010481008	Install threaded pipe	Aluminium Alloy	1
8	121010281001	EVA Washer	EVA	1
7	121010211001	Nut	PA66+30%GF	1
6	121010211033	Body	Zinc Alloy	1
5	121010491010	Washer	POM	1
4	12111171003	Gasket	POM	1
3	12111171012	Sprayer	ABS	1
2	999910060057	Pull-down Hose Assembly	Nylon+TPE	1
1	12111171001	Gasket	POM	1



IMPORTANT: These measurements are subject to change or cancellation. No responsibility is assumed for use of superseded or voided pages. BOCCHI reserves the right to make revisions without notice to product specifications.