

**SILHOUETTE™ 25" SINGLE BOWL KITCHEN SINK**

- Americast® brand engineered material
- Single bowl design
- Acid-resisting glossy porcelain finish
- Top mount or undercounter installation
- Silicone sealant supplied
- Available in 1, 3 or 4 faucet hole configuration
- Customized hole punchings available (see page KS-61)

**Top Mount/Undercounter:**

- 7172.001** Center hole only
- 7172.803** 3 hole
- 7172.804** 4 hole

**Undercounter Installation Order:**

- 791326-100** Mounting Kit (consists of cut-out templates and mounting kits)

**Nominal Dimensions:**

635 x 559 x 241mm  
(25" x 22" x 9-1/2")

**Bowl sizes:**

552mm (21-3/4") wide  
476mm (18-3/4") front to back  
229mm (9") deep

**Compliance Certifications -**

**Meets or Exceeds the Following Specifications:**

- ASME A112.19.4M for Americast Plumbing Fixtures
- ASTM E162 for Flammability
- NFPA 258 for Smoke Density

SEE REVERSE SIDE FOR ROUGHING-IN DIMENSIONS



**Top Mount Model (faucet not included)**



**Undercounter Mount**

**To Be Specified:**

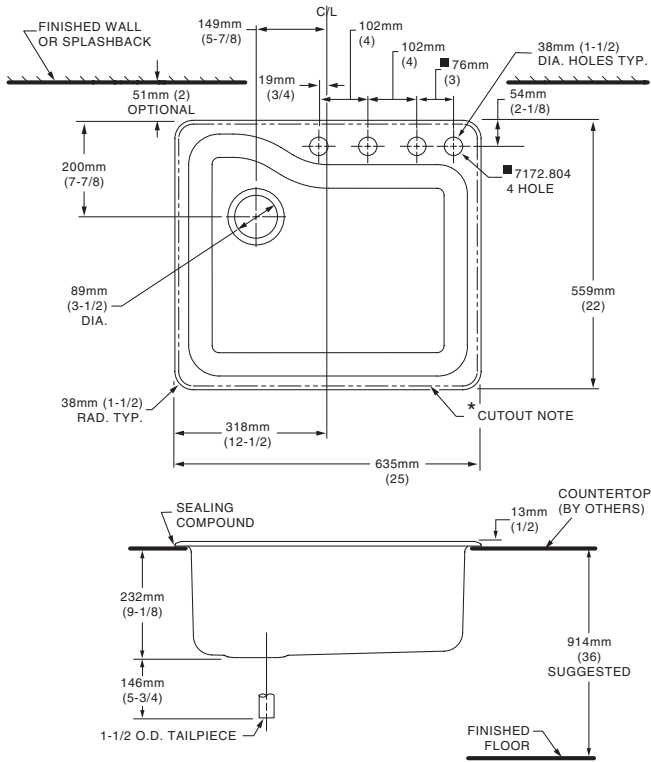
- Color:
- Faucet\*:
- Faucet Finish:
- Basket Strainer: 4331.013
- Soap Dispenser: 4503.115, Color:
- Trap:

**Optional Accessories:**

- Coated Wire Utility Basket: 7346.100, Color:
- Wood Cutting Board: 9000.250
- Colander for Cutting Board: 8102.100, Color:
- Large Colander: 8103.100, Color:
- Bottom Sink Rack: 7404.100

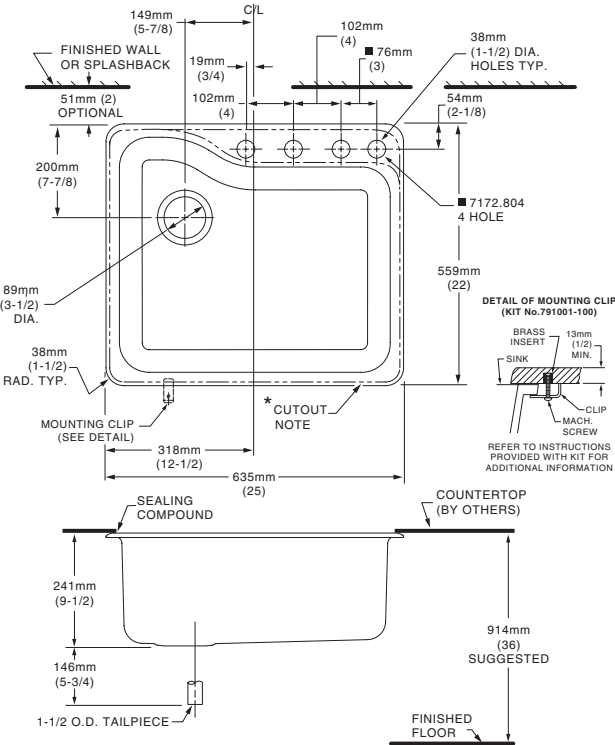
\* See faucet section for available models

**7172.803/804/823/824 Top Mount**



**NOTES:**  
 \* **TOP MOUNT (7172.803/4):** COUNTERTOP CUTOUT 603 x 527mm WITH 25mm RADIUS (23-3/4 X 20-3/4 WITH 1" RAD.) AT CORNERS.  
 ■ **ON FOUR HOLE VERSIONS, SPACING BETWEEN FAR RIGHT HOLES IS 3".**  
 FITTINGS NOT INCLUDED AND MUST BE ORDERED SEPARATELY.  
 PROVIDE SUITABLE REINFORCEMENT FOR ALL WALL AND COUNTERTOP SUPPORTS.  
**IMPORTANT:** Dimensions of fixtures are nominal and may vary within the range of tolerances established by ASME Standard A112.19.4 These measurements are subject to change or cancellation. No responsibility is assumed for use of superseded or voided leaflet.

**Undercounter Mount**



**NOTES:**  
 \* **TEMPLATE PROVIDED WITH MOUNTING KIT 791326-100 FOR EXPOSED FAUCET DECK OR UNDERCOUNTER FAUCET DECK COUNTERTOP CUTOUT VARIATIONS.**  
 ■ **ON FOUR HOLE VERSIONS, SPACING BETWEEN FAR RIGHT HOLES IS 3".**  
 FITTINGS NOT INCLUDED AND MUST BE ORDERED SEPARATELY.  
 PROVIDE SUITABLE REINFORCEMENT FOR ALL WALL AND COUNTERTOP SUPPORTS.  
**IMPORTANT:** Dimensions of fixtures are nominal and may vary within the range of tolerances established by ASME Standard A112.19.4 These measurements are subject to change or cancellation. No responsibility is assumed for use of superseded or voided leaflet.

**SILHOUETTE™ 25" SINGLE BOWL KITCHEN SINK**

- Americast® brand engineered material
- Single bowl design
- Acid-resisting glossy porcelain finish
- Tile edge installation
- Silicone sealant supplied
- Available in 1, 3 or 4 faucet hole configuration
- Customized hole punchings available (see page KS-61)

**Tile Edge:**

- 7172.011** Center hole only
- 7172.813** 3 hole
- 7172.814** 4 hole

**Nominal Dimensions:**

635 x 559 x 241mm  
(25" x 22" x 9-1/2")

**Bowl sizes:**

552mm (21-3/4") wide  
476mm (18-3/4") front to back  
229mm (9") deep

**Compliance Certifications -**

**Meets or Exceeds the Following Specifications:**

- ASME A112.19.4M for Americast Plumbing Fixtures
- ASTM E162 for Flammability
- NFPA 258 for Smoke Density



SEE REVERSE SIDE FOR ROUGHING-IN DIMENSIONS

**To Be Specified:**

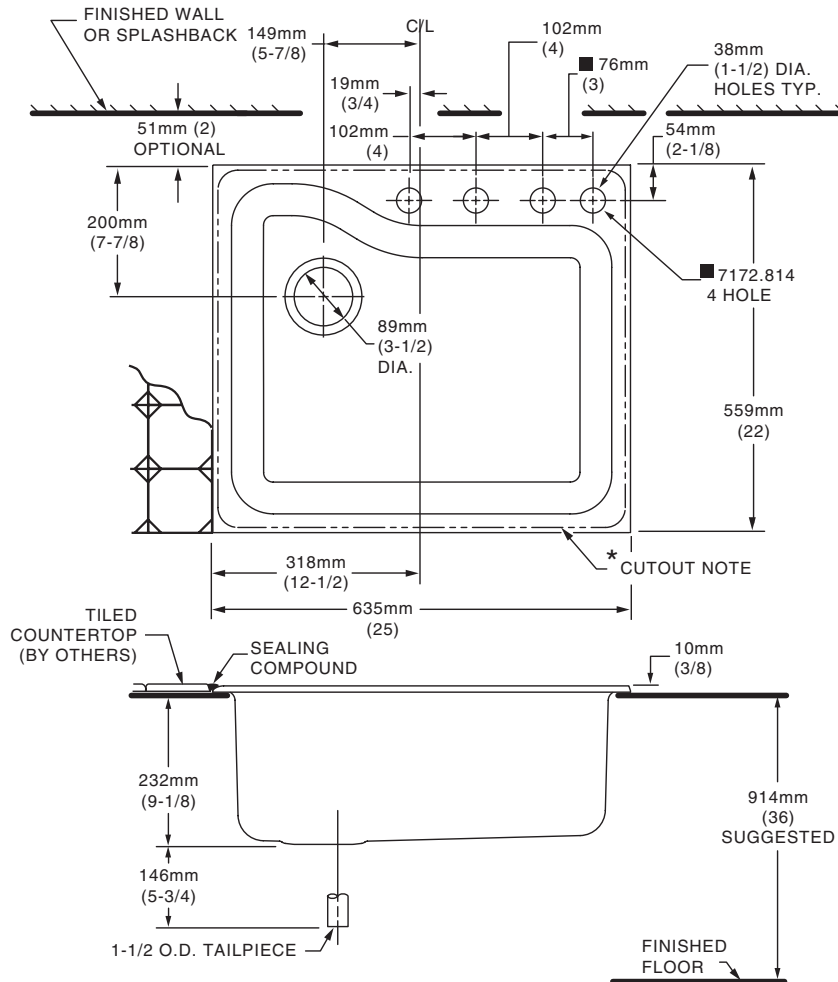
- Color:
- Faucet\*:
- Faucet Finish:
- Basket Strainer: 4331.013
- Soap Dispenser: 4503.115, Color:
- Trap:

**Optional Accessories:**

- Coated Wire Utility Basket: 7346.100, Color:
- Wood Cutting Board: 9000.250
- Colander for Cutting Board: 8102.100, Color:
- Large Colander: 8103.100, Color:
- Bottom Sink Rack: 7404.100

\* See faucet section for available models

7172.813/814



**NOTES:**

\* COUNTERTOP CUTOUT 603mm x 527mm WITH 25mm RADIUS (23-3/4 X 20-3/4 WITH 1" RADIUS) AT CORNERS.

■ ON FOUR HOLE VERSIONS, SPACING BETWEEN FAR RIGHT HOLES IS 3".

FITTINGS NOT INCLUDED AND MUST BE ORDERED SEPARATELY.

PROVIDE SUITABLE REINFORCEMENT FOR ALL WALL AND COUNTERTOP SUPPORTS.

**IMPORTANT:** Dimensions of fixtures are nominal and may vary within the range of tolerances established by ASME Standard A112.19.4. These measurements are subject to change or cancellation. No responsibility is assumed for use of superseded or voided leaflet.