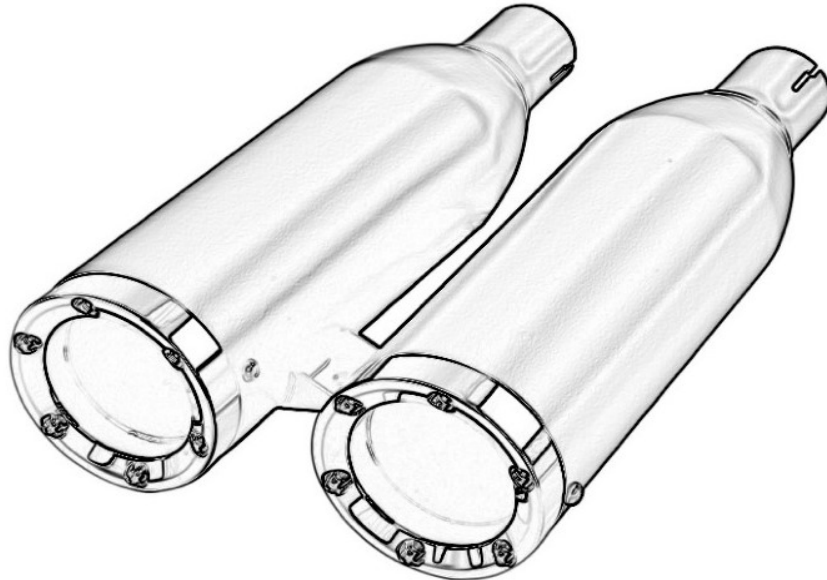




**Warning:** Pipes are illegal for EPA, CALIFORNIA and CARB. Only for off-road racing use.

**Warning:** This muffler only fit Indian OEM Stock header pipe. May not work with aftermarket brands headers, like Vance Hines, Cobra, Rinehart, etc. If you have aftermarket headers, please check the muffler inlet with your header inside pipe before install.



**The pipe may differ for different end caps.**

**ITEM SUPPLIED:**

- 1-LEFT SLIP-ON MUFFLER
- 1-RIGHT SLIP-ON MUFFLER
- 1-A PACK OF HARDWARE
- 1-INSTALLATION INSTRUCTION

**FITMENT:**

**ALL 2015-UP INDIAN SCOUT FAMILY MODELS**  
SCOUT, SCOUT SIXTY, SCOUT BOBBER, SCOUT BOBBER TWENTY, SCOUT BOBBER SIXTY, SCOUT ROGUE, SCOUT ROGUE SIXTY

**SUGGESTED TOOLS:**



15MM LONG HANDLE SOCKET



8MM WRENCH



13MM REGULAR SOCKET WITH EXTENSION

**Make sure that THE BIKE is completely cooled down before ANY OPERATION.**

## **INSTALLATION INSTRUCTIONS FOR 4.0" INDIAN SCOUT SLIP-ON MUFFLERS:**

**Please use the bolts and nuts come with the pipes.**

1. Before doing any actions to your bike. Please sure your bike is right parked. Do not easy to fall down when you are pulling or installing the exhausts.
  2. Before installing the new 4.0" Indian Scout pipes. We need to remove the stock slip-on mufflers first. (**Shown in Figure 1**)
  3. Use 15mm long-handle socket to loosen the exhaust clamps for connecting the mufflers with headers. (**Shown in Figure 2**)
  4. Before we take off the bottom exhaust, we have to remove the top one first. Cause you can not access to the bracket when the TOP pipe is in the way. (**Shown in Figure 3**)
  5. Use 13mm regular socket to loosen the nuts for holding the mufflers up, which are behind the pipes. (**Shown in Figure 4 / 5**)
  6. Then carefully remove the top muffler without hurting the head pipe; Slightly twist it and pull the muffler out until it slides off the head pipe. Put the TOP stock pipe aside. Now, we need to remove the BOTTOM pipe. (**Shown in Figure 6**)
  7. Use the 13mm regular socket again to loosen the nut behind the pipes. Then carefully twist the pipes and remove it. (**Shown in Figure 7/8**)
  8. Get the clamps off the stock pipes.
  9. And mount the clamps to the new pipes. And make sure they are oriented the same way that came off. So you can tighten it easy later. (**Shown in Figure 9**)
  10. Now. We will install the new pipes. We got to start on the bottom one. Slide the new mufflers back to the headpipes until the mounting holes align. Use the OEM bolt or our bolt (M8\*30mm long) are both alright. This bolt has to be tightened before installing the top one. Cause it's hard to reach it when the TOP one is on. (**Shown in Figure 10**)
- NOTE: Tighten the bolt on the bottom pipe before installing the top pipe.**
11. Then we are able to install the top muffler. Align the muffler to the braket hole, and use our bolt (M8\*30mm long) to attach it. Please do not use the OEM bolt, it may too long for the top muffler. (**Shown in Figure 11**)
  12. Make sure tighten the top and bottom mufflers' brackets. It will help holding the pipes tight, vibration-proof. (**Shown in Figure 11/12**)
  13. Double-check all gaps and alignments then tighten the mounting bolts and the muffler clamps.
  14. Finally, be sure to wipe all fingerprints or oil stain off after installation, before start the engine.

**Note: If you leave a fingerprint to it, the chrome may discolor when it heats up!**

**Figure 1**



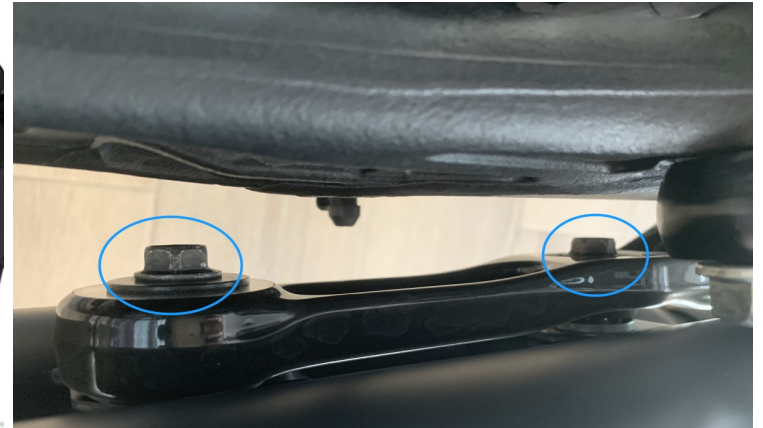
**Figure 2**



**Figure 3**



**Figure 4**



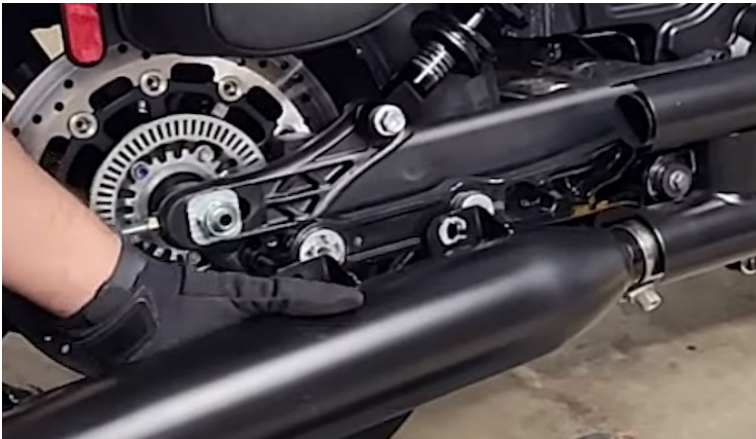
**Figure 5**



**Figure 6**



**Figure 7**



**Figure 8**



Figure 9



Figure 10



Figure 11

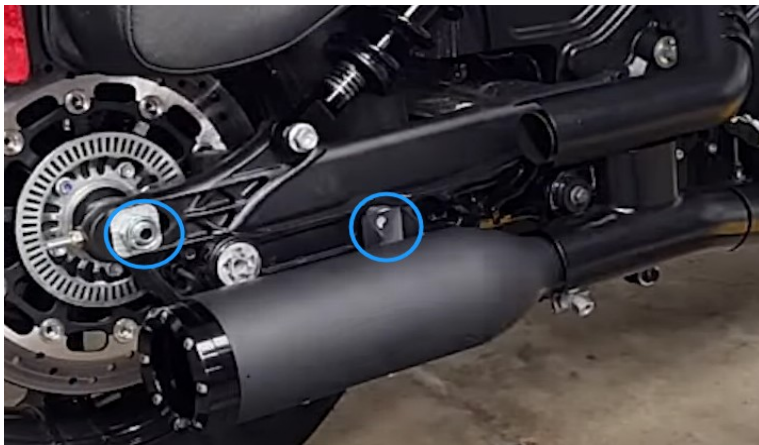


Figure 12



**Be sure to tighten all hardware before starting your engine. Retighten after the first 100 miles.**

**Discoloration:** DOES NOT WARRANTY ANY CHROME EXHAUST PRODUCTS AGAINST DISCOLORATION!

Discoloration is not a defect in chrome. All chrome exhaust systems will turn color. Chrome discoloration is a result of heat. The more heat the chrome is exposed to, the quicker and more severe the discoloration will be.

**Tuning:** It is strongly recommended by SHARKROAD. Better flowing, less restrictive exhaust will require more intake, so please consider upgrading your air cleaner along with your fuel-management system. Working with high-flow intake, Fuel Management system, and correct profession re-mapping, the bike would gain a more better performance.

**C.A.R.B.:** California does not allow the use of aftermarket exhaust systems that remove original equipment catalyts, (except for racing use only) unless the Air Resources Board has issued an Executive Order for that system.

**Returns:** When you want to return, please contact us in 72 hours after received the product so we can help you out immediately. We only accept return in 30 days after your order. International Return is not acceptable. For return shipping cost to our warehouse, If the product have quality or shipping damage issue, We will send you shipping label or pay the cost after you send out. If you don't like the product or buy by mistake, Buyer should stand this shipping cost.

**Warranty:** SHARKROAD products are warranted for one year against defects in material and workmanship. This warranty does not cover chrome discoloration or rust. Also SHARKROAD will not warranty any abused, misused, improperly installed or modified system.

Wearing a helmet while riding is always recommended. Please never go for a ride while under the influence of alcohol and/or drugs. Enjoy the new voice and the fresh look of your motorcycle and please ride safely.