

# SHARK ROAD

SLIP ON MUFFLERS



# TABLE OF CONTENTS

Please visit our website or contact us to get more details.

STYLE	FOR MOTORCYCLES MODELS		PAGE	
SLIP ON MUFFLERS	HARLEY DAVIDSON	TOURING	4.4" (MEGAPHONE STYLE)	3-4
			4.0" & 4.0"-PRO for 1995-2016	5-6
			4.0" & 4.0"-PRO for 2017-UP	7-8
			4.5" & 4.5"-PRO for 1995-2016	9-10
			4.5" & 4.5"-PRO for 2017-UP	11-12
			FISHTAIL	13-15
		TRIKE, ROAD GLIDE 3	4.0"	16
		SPORTSTER	3.0"	17-18
			GP	18
		SOFTAIL	3.5"	19-20
	GP		20	
	STREET	4.0"	21	
	Dyna	GP	21	
	INDIAN	SCOUT	3.0"	22
			GP	22
			4.0"	23
		BAGGER & TOURING	4.0"	24
	KAWASAKI	VULCAN 1700	4.0"	25
	HONDA	GOLD WING	4.0"	26
	YAMAHA	ROYAL STAR	4.4"	27
BMW	R18	4.0"	27-28	
UNIVERSAL		GP	29	

**DISCLAIMER:** NOT LEGAL FOR SALE OR USE IN CALIFORNIA ON ANY POLLUTION CONTROLLED MOTOR VEHICLES.  
SEE PAGE 02 FOR EMISSIONS & NOISE REGULATIONS, AND WARRANTY INFORMATION.



# IMPORTANT INFORMATION

## EMISSIONS & NOISE REGULATIONS, AND WARRANTY

### NOTE:

Aftermarket products, including but not limited to exhaust pipes, mufflers, catalytic converters, oxygen sensors, fuel/air controller modules, air filter kits, camshafts, O2 eliminators, and carburetors and jet kits which alter, modify, or replace emission control devices or systems of an originally compliant highway motorcycle, are not legal for sale or street use in California unless they have been issued a CARB Executive Order. Aftermarket emissions-related products which have not been issued an Executive Order or which are not aftermarket Replacement Parts, as defined in Title 13, California Code of Regulations, Section 1900(b)(2), are authorized for closed circuit race use only. Products shown may be designed, manufactured, intended and sold for closed circuit race use only, and use of the same on public roads or lands may be a violation of local, state and/or federal laws. See manufacturer's information and state and local laws to determine what is authorized for your use on your vehicle.

### NOTE:

The California Air Resources Board ("CARB") and/or the Environmental Protection Agency ("EPA") do not permit the use of aftermarket emissions-related part(s) that alter the performance of OEM emissions-related devices unless CARB has issued an Executive Order, other than on racing vehicles on closed courses. Check your local laws and manufacturer's information. More California exhaust information is available at [www.arb.ca.gov/](http://www.arb.ca.gov/).

**The following emissions-related defined terms are used in this catalog**

**(PARTS WITH THE FOLLOWING DESIGNATIONS IN THIS CATALOG ARE NOT ILLEGAL FOR SALE IN CALIFORNIA UNDER CARB REGULATIONS):**

- **"CARB E.O."** means the specified Executive Order issued by CARB. An Executive Order constitutes an exemption by CARB from CA Vehicle Code 27156 and 38391, for sale of the part number for the make/model/year fitment(s) specified in the Executive Order.
- **"Replacement Part"** means any aftermarket part intended to replace an original equipment emissions-related part and which is functionally identical to the original equipment part in all respects which in any way affect emissions (including durability), or a consolidated part.
- **"Qualified Manufacturer Declared Replacement Part"** means any aftermarket part intended to replace an original equipment emissions-related part and which is functionally identical to the original equipment part in all respects which in any way affect emissions (including durability), or a consolidated part that has been evaluated and declared by the manufacturer to meet this definition and carry this categorization and designation label. This manufacturer has declared in writing that it has documentation, based upon sound engineering judgment, indicating the replacement part does not reduce the effectiveness of any required emission control device and it does not cause the modified vehicle/engine/equipment to exceed applicable emissions standards for that make/model/year fitment(s) advertised.

**NOTE:** Products shown may not conform to federal, state or local emissions and/or noise regulations.

## WARRANTY

**There is no warranty on exhaust pipes and mufflers with regard to any discoloration. Discoloration (blueing) is caused by tuning characteristics, i.e., cam timing, carburetor, etc., and is not caused by defective manufacturing. It is caused by one or more of the following:**

- A) Excessive use if the choke/ enrichener.
- B) Cam(s) with 260° or more exhaust duration.
- C) Incorrect carburetor jetting, the optimum air: fuel ratio is 14:7:1.
- D) Retarded ignition timing.
- E) Using polish or wax on the exhaust.
- F) Overheating due to traffic condition.

Check your applicable laws and manufacturer's publication(s) and/or website(s) for manufacturer's warranty, maintenance, safety, mounting and any regulatory compliance/non-compliance information



# SLIP ON MUFFLERS

FOR HARLEY DAVIDSON TOURING 1995-2016

## 4.4" Megaphone Style Mufflers With Baffles and Tips

- . Not much louder, but more deep rumble tone.
- . Boost compliments for your bike's great sound.
- . Fantastic pipes, solid build at a reasonable cost.
- . Removable baffles for your demand.
- . End cap changeable.



Baffle Perspective Vision

Outlet View



Part #: **HDMF-MP9506CC**

Muffler Inlet I.D: **Left-1.75" & Right-1.75"**

Loud Level / Stock: **7/6**

Sold in Units: **2**

Baffles: **✓**

Baffles Removable: **✓**

Fitment: **1995-2016 Harley Touring**

**(Except Trike Models)**

### END CAPS FOR ALTERNATIVE:



NO.:05C

NO.:06C

NO.:06B

NO.:08B

PART#	DESCRIPTION	MSRP -\$
MP9505CC	Chrome W/ No. 05 Chrome tips	219
MP9506BB	Black W/ No. 06 Black tips	219
MP9508BB	Black W/ No. 08 Black tips	219

PART#	DESCRIPTION	MSRP -\$
MP9506CC	Chrome W/ No. 06 Chrome tips	219
MP9508CB	Chrome W/ No. 08 Black tips	219



# SLIP ON MUFFLERS

FOR HARLEY DAVIDSON TOURING 2017-UP

## 4.4" Megaphone Style Mufflers With Baffles and Tips

- . Not much louder, but more deep rumble tone.
- . Boost compliments for your bike's great sound.
- . Fantastic pipes, solid build at a reasonable cost.
- . Removable baffles for your demand.
- . End cap changeable.



Baffle Perspective Vision



Outlet View



Part #: **HDMF-MP1708BB**

Baffles: ✓

Muffler Inlet I.D: **Left-1.75" & Right-2.5"**

Baffles Removable: ✓

Loud Level VS Stock: **7/6**

Fitment: **2017-UP Harley Touring**

Sold in Units: **2**

**(Except Trike Models)**

### END CAPS FOR ALTERNATIVE:



NO.:05C



NO.:06C



NO.:08B



NO.:18B

PART#	DESCRIPTION	MSRP -\$
MP1705CC	Chrome W/ No. 05 Chrome tips	229
MP1708BB	Black W/ No. 08 Black tips	229
MP1718BB	Black W/ No. 18 Black tips	229

PART#	DESCRIPTION	MSRP -\$
MP1706CC	Chrome W/ No. 06 Chrome tips	229
MP1708CB	Chrome W/ No. 08 Black tips	229



# SLIP ON MUFFLERS

FOR HARLEY DAVIDSON TOURING 1995-2016 MODELS

## 4.0" Mufflers With Baffles



- . Richer deep rumble tone than stock.
- . Louder than stock.
- . Good value, good deal only cost 1/2 of big brands.
- . Removable baffles for your demand.
- . The end cap 180° rotatable .



Item NO.: HDMF-409521CB

Muffler Inlet I.D: Left-1.75" & Right-1.75"

Sold in Units: 2

Fitment: 1995-2016 Harley Davidson Touring Partial Models

## Baffle Perspective Vision



Baffles Removable: ✓

Spiral-hole Length: 15.5"

Baffle Diameter: 2.5"

Fiberglass Wrapped: N/A

Sound Level: 8/10

HP/TQ Level: 9.0/10





**END CAPS FOR ALTERNATIVE:**



NO.:08B      NO.:18B      NO.:20C      NO.:21B      NO.:21C      NO.:25B

PART#	DESCRIPTION	MSRP -\$
409508CB	Chrome W/ No. 08 Black tips With Baffles	249
409520CC	Chrome W/ No. 20 Chrome tips With Baffles	249
409521CB	Chrome W/ No. 21 Black tips <b>With Baffles</b>	249

PART#	DESCRIPTION	MSRP -\$
409518CB	Chrome W/ No.18 Black tips With Baffles	249
409521CC	Chrome W/ No. 21 Chrome tips With Baffles	249
409525CB	Chrome W/ No. 25 Black tips With Baffles	249



# SLIP ON MUFFLERS

FOR HARLEY DAVIDSON TOURING 2017-UP MODELS

## 4.0" Mufflers With Baffles



- . Richer deep rumble tone than stock.
- . Louder than stock.
- . Good value, good deal only cost 1/2 of big brands.
- . Removable baffles for your demand.
- . The end cap 180° rotatable .



Item NO.: HDMF-401720CC

Muffler Inlet I.D: Left Side-1.75" & Right Side-2.5"

Sold in Units: 2

Fitment: For 2017-UP Harley Davidson Touring Models

NOT FOR Trike Models

## Baffle Perspective Vision



Baffles Removable: ✓

Spiral-hole Length: 15.5"

Baffle Diameter: 2.5"

Fiberglass Wrapped: N/A

Sound Level: 8/10

HP/TQ Level: 9.0/10







**END CAPS FOR ALTERNATIVE:**



NO.:08B

NO.:18B

NO.:20B

NO.:21B

NO.:21C

NO.:26B

PART#	DESCRIPTION	MSRP -\$
401708CB	Chrome W/ No. 08 Black tips With Baffles	259
401720BB	Black W/ No. 20 Black tips With Baffles	259
401721CB	Chrome W/ No. 21 Black tips With Baffles	259

PART#	DESCRIPTION	MSRP -\$
401718CB	Chrome W/ No. 18 Black tips With Baffles	259
401721CC	Chrome W/ No. 21 Chrome tips With Baffles	259
401726CB	Chrome W/ No. 26 Black tips With Baffles	259



# SLIP ON MUFFLERS

FOR HARLEY DAVIDSON TOURING 1995-2016 MODELS

## 4.5" Rumble Sound Muscle Mufflers With Baffles and Tips



- . Aggressive louder rumble tone than stock.
- . 4.5" muscle appearance.
- . 1/2 budget of big brands. Big bang for your bucks.
- . Removable baffles for your demand.
- . The end cap 180° rotatable .



Item NO.: HDMF-459505CC

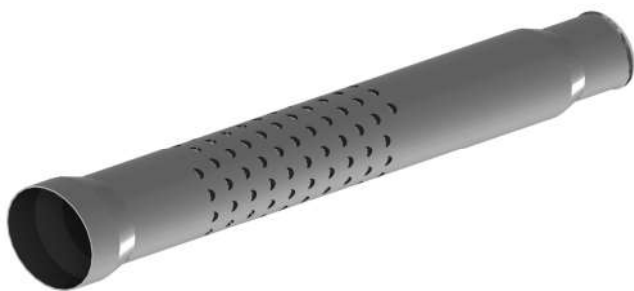
Muffler Inlet I.D: Left-1.75" & Right-1.75"

Sold in Units: 2

Fitment: 1995-2016 Harley Touring Partial Models

NOT FOR Trike Models

### Stepped Baffle Perspective Vision



Baffles Removable: ✓

Spiral-hole Length: 7"

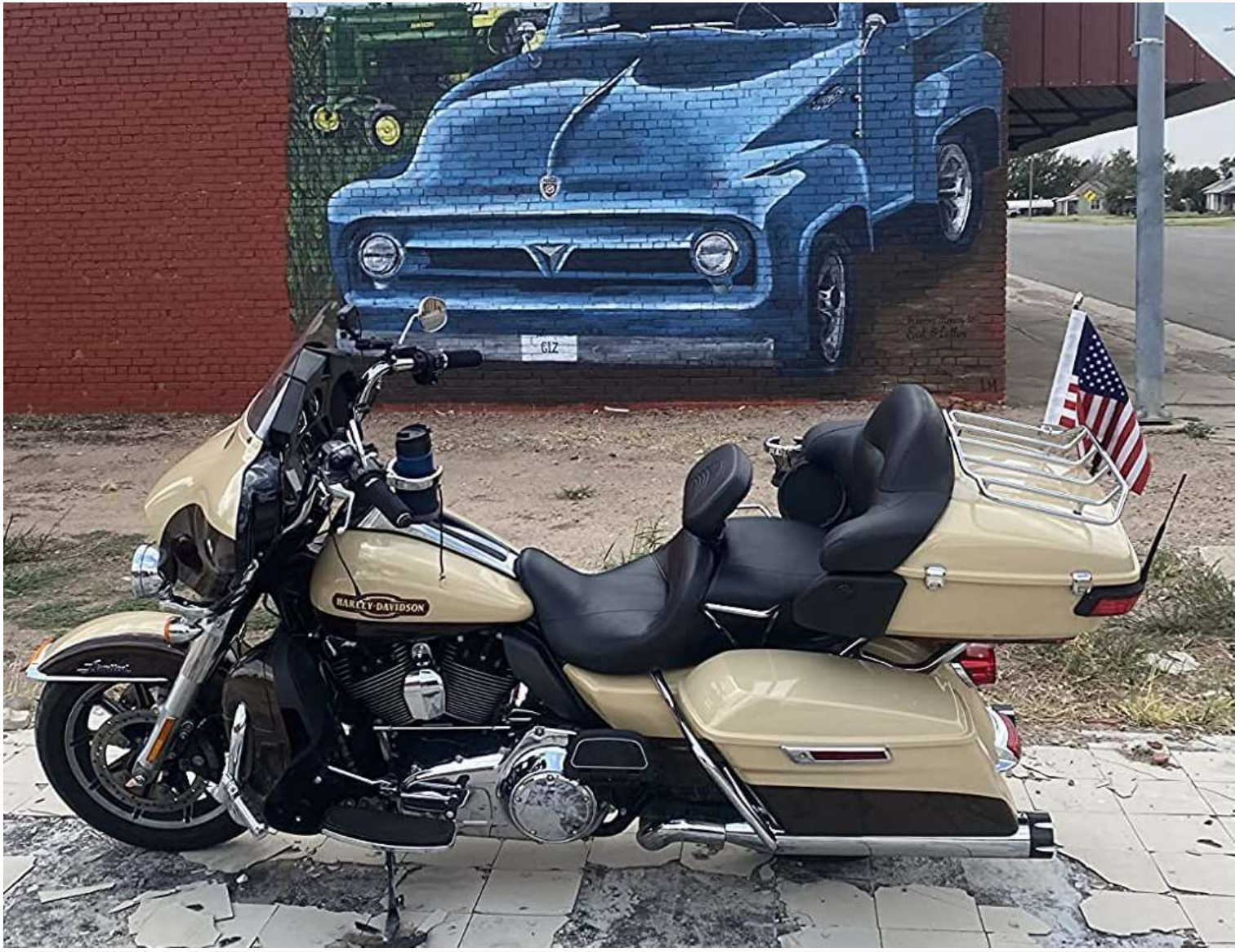
Baffle Diameter: 2.5~3.0"

Fiberglass Wrapped: N/A

Sound Level: 9.5/10

HP/TQ Level: 9.5/10





**END CAPS FOR ALTERNATIVE:**



NO.:05C

NO.:18B

NO.:20C

NO.:20B

NO.:21C

NO.:25B

PART#	DESCRIPTION	MSRP -\$
459505CC	Chrome W/ No. 05 Chrome tips With Stepped Baffles	279
459518CB	Chrome W/ No. 18 Black tips With Stepped Baffles	279
459520CC	Chrome W/ No. 20 Chrome tips With Stepped Baffles	279
459525CB	Chrome W/ No.25 Black tips With Stepped Baffles	279

PART#	DESCRIPTION	MSRP -\$
459518BB	Black W/ No. 18 Black tips With Stepped Baffles	279
459520BB	Black W/ No. 20 Black tips With Stepped Baffles	279
459521CC	Chrome W/ No. 21 Chrome tips With Stepped Baffles	279



# SLIP ON MUFFLERS

FOR HARLEY DAVIDSON TOURING 2017-UP PARTIAL MODELS

## 4.5" Rumble Sound Muscle Mufflers With Baffles and Tips



- . Aggressive louder rumble tone than stock.
- . 4.5" muscle appearance.
- . 1/2 budget of big brands. Big bang for your bucks.
- . Removable baffles for your demand.
- . The end cap 180° rotatable .



Item NO.: HDMF-451726CB

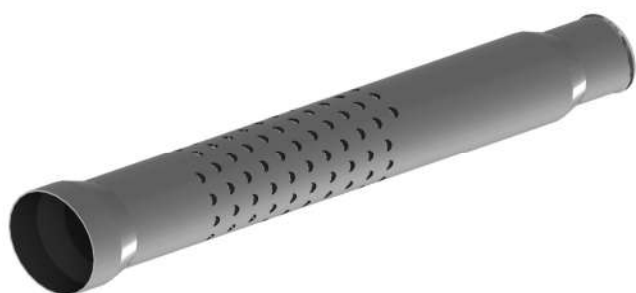
Muffler Inlet I.D: Left-1.75" & Right-2.5"

Sold in Units: 2

Fitment: For 2017-Later Harley Davidson Touring Models

NOT FOR Trike Models

### Stepped Baffle Perspective Vision



Baffles Removable: ✓

Spiral-hole Length: 7"

Baffle Diameter: 2.5~3.0"

Fiberglass Wrapped: NO

Sound Level: 9.5/10

HP/TQ Level: 9.5/10





## END CAPS FOR ALTERNATIVE:



NO.:05C

NO.:18B

NO.:20C

NO.:21C

NO.:25B

NO.:26B

PART#	DESCRIPTION	MSRP -\$	PART#	DESCRIPTION	MSRP -\$
451705CC	Chrome W/ No. 05 Chrome tips With Stepped Baffles	289	451718CB	Chrome W/ No. 18 Black tips With Stepped Baffles	289
451718BB	Black W/ No. 18 Black tips With Stepped Baffles	289	451720CC	Chrome W/ No. 20 Chrome tips With Stepped Baffles	289
451720BB	Black W/ No. 20 Black tips With Stepped Baffles	289	451721CC	Chrome W/ No. 21 Chrome tips With Stepped Baffles	289
451725CB	Chrome W/ No.25 Black tips With Stepped Baffles	289	451725BB	Chrome W/ No. 25 Black tips With Stepped Baffles	289
451726CB	Chrome W/ No. 26 Black tips With Stepped Baffles	289			



# SLIP ON MUFFLERS

FOR HARLEY DAVIDSON TOURING 1995-2016

## 1-7/8" O.D Non-baffled Fishtail Mufflers



- . Make a world of difference on look and sound.
- . Very distinct fishtail pipes clip-clop sound.
- . Very loud sound.
- . Looks nice without breaking the bank.
- . Fit perfect and look custom made.

Part #: **HDFT-3395B / 3695C**

Muffler Inlet I.D: **Left-1.75" & Right-1.75"**

Loud Level VS Stock: **9/6**

Sold in Units: **2**

Baffles: **×**

Baffles Removable: **N/A**

Fitment: **1995-2016 Harley Touring**

**(Except Trike Models)**



PART#	DESCRIPTION	MSRP -\$
3395C	Chrome 33" Long Fishtail W/O baffle	169
3695C	Chrome 36" Long Fishtail W/O baffle	179
3995C	Chrome 39" Long Fishtail W/O baffle	199
4295C	Chrome 42" Long Fishtail W/O baffle	229

PART#	DESCRIPTION	MSRP -\$
3395B	Black 33" Long Fishtail W/O baffle	169
3695B	Black 36" Long Fishtail W/O baffle	179
3995B	Black 39" Long Fishtail W/O baffle	199
4295B	Black 42" Long Fishtail W/O baffle	229



# SLIP ON MUFFLERS

FOR HARLEY DAVIDSON TOURING 2017-UP

## 1-7/8" O.D Non-baffled Fishtail Mufflers



- . Make a world of difference on look and sound.
- . Very distinct fishtail pipes clip-clop sound.
- . Very loud sound.
- . Looks nice without breaking the bank.
- . Fit perfect and look custom made.

Part #: HDFT-3617C / 3617B

Muffler Inlet I.D.: Left-1.75" & Right-2.5"

Loud Level VS Stock: 9/6

Sold in Units: 2

Baffles: ✕

Baffles Removable: N/A

Fitment: 2017-UP Harley Touring

**(Except Trike Models)**



PART#	DESCRIPTION	MSRP -\$	PART#	DESCRIPTION	MSRP -\$
3317C	Chrome 33" Long Fishtail W/O baffle	179	3317B	Black 33" Long Fishtail W/O baffle	179
3617C	Chrome 36" Long Fishtail W/O baffle	189	3617B	Black 36" Long Fishtail W/O baffle	189
3917C	Chrome 39" Long Fishtail W/O baffle	209	3917B	Black 39" Long Fishtail W/O baffle	209
4217C	Chrome 42" Long Fishtail W/O baffle	239	4217B	Black 42" Long Fishtail W/O baffle	239



# SLIP ON MUFFLERS

FOR HARLEY DAVIDSON TOURING

## 3.0" O.D. Fishtail Mufflers With Baffles For Touring 1995-2016



- . Much Louder than stock. But NOT obnoxious.
- . Distinct fishtail exhaust sound.
- . Solid pipe at a competitive price.
- . Custom-made quality pipes.



Part #: HDFT-7695C

Muffler Inlet I.D: Left-1.75" & Right-1.75"

Loud Level VS Stock: 8.5/6

Sold in Units: 2

Baffles: ✓

Baffles Removable: ✗

Fitment: **1995-2016 Harley Touring**  
**(Except Trike Models)**

PART#	DESCRIPTION	MSRP -\$
7695C	Chrome 36" long Fishtail W/ baffle	189

PART#	DESCRIPTION	MSRP -\$
7695B	Black 36" long Fishtail W/ baffle	189

## 3.0" O.D. Fishtail Mufflers With Baffles For Touring 2017-UP



- . Much Louder than stock. But NOT obnoxious.
- . Distinct fishtail exhaust sound.
- . Solid pipe at a competitive price.
- . Custom-made quality pipes.



Part #: HDFT-7617C

Muffler Inlet I.D.: Left-1.75" & Right-2.5"

Loud Level VS Stock: 8.5/6

Sold in Units: 2

Baffles: ✓

Baffles Removable: ✗

Fitment: **2017-UP Harley Touring**  
**(Except Trike Models)**

PART#	DESCRIPTION	MSRP -\$
7617C	Chrome 36" long Fishtail W/ baffle	199

PART#	DESCRIPTION	MSRP -\$
7617B	Black 36" long Fishtail W/ baffle	199





# SLIP ON MUFFLERS

FOR HARLEY DAVIDSON TRIKE MODELS

## 4.0" Rich Rumble Tone Mufflers With Baffles And Tips

- . Deeper roaring tone than stock.
- . Every penny worth-1/2 budget of big brands.
- . The same dimension as OEM. Easy to install.
- . Fit perfect and look custom made.



Part #: HDTGMF-400920CC / HDTGMF-400925CB

Muffler Inlet: Left-1.75" & Right-1.75"

Loud Level VS Stock: 8/6

Sold in Units: 2

Baffles: ✓

Baffles Removable: ✓

Fitment: 2009-UP Harley Touring Trike, Harley Tri Glide, and Harley Freewheeler, Touring Road Glide 3 FLTRT.



PART#	DESCRIPTION	MSRP - \$
HDTGMF-400920CC	Chrome Pipes W/ No. 20 Chrome Tips	299

PART#	DESCRIPTION	MSRP - \$
HDTGMF-400925CB	Chrome Pipes W/ No. 25 Black Tips	299



# SLIP ON MUFFLERS

FOR HARLEY DAVIDSON SPORTSTER 2014-UP Partial Models



## 3.0" O.D. Mufflers Like "Non-baffled" Loud Sound W/ Baffles and Tips

- . Loud pipes save lives.
- . 2X louder than stock pipes.
- . 1/2 budget of big brands=No-overpay for a name.
- . Easy installation as counting ABC.



Muffler Gasket ( FOR 2017-UP MODELS)



Baffle Perspective Vision



Outlet View

Part #: **HDMF-3020BB**

Baffles: ✓

Muffler Inlet: **Left-1.75" & Right-1.75"**

Baffles Removable: ✓

Loud Level VS Stock: **9/6**

Fitment: **2014-UP Harley Sportster Models**

Muffler Gasket: **2 (Some of the models may need)**

Sold in Units: **2**





## CUSTOM STYLE TIPS FOR 3.0" MUFFLERS:



Part #:02B



Part #: 20C



Part #: 20B

PART#	DESCRIPTION	MSRP -\$
HDMF-3020CC	Chrome W/ No. 20 Chrome tips	179
HDMF-3020CB	Chrome W/ No. 20 Black tips	179
HDMF-3027CB	Chrome Outside Heat Shield W/ Black Inside Tube	189

PART#	DESCRIPTION	MSRP -\$
HDMF-3002BB	Black W/ No. 02 Black tips	179
HDMF-3020BB	Black W/ No. 20 Black tips	179
HDMF-3027BB	Black Outside Heat Shield W/ Black Inside Tube	189

## Short GP Mufflers W/O Baffles For Sportster Partial Models



- . Distinct Shark preying-on style=Good Looking.
- . Stright Pipe design= Might louder than expected.
- . Quality made pipes at a competitive price.
- . Easy to install.
- . Quiet-baffles sold separated.

Part #: HDSPMF-GP01B / C

Muffler Inlet I.D.: Left-1.75" & Right-1.75"

Loud Level VS Stock: 9/6

Sold in Units: 2

Baffles: ×

Baffles Available: Yes. (Sold separated.)

Fitment: 2004-UP Harley Davidson Sportster Partial Models.

(Please sure you love a thunderous sound before purchasing.)

PART#	DESCRIPTION	MSRP -\$
HDSPMF-GP01C	Chrome GP pipes for 2004-up Sportster partial models	99

PART#	DESCRIPTION	MSRP -\$
HDSPMF-GP01B	Black GP pipes for 2004-up Sportster partial models	99



# SLIP ON MUFFLERS

FOR HARLEY DAVIDSON SOFTAIL 2018-UP



## 3.5" Roaring Rumble Sound Mufflers With Baffles and Tips

- . Turn a sewing machine to a real Harley bike.
- . Boost compliments for a great performance.
- . Unique and attractive appearance.
- . Quality-made for lasting and durability.
- . No-overpay for a big name.



With Muffler Gasket



Quality Made End Caps

Part #: **HDSFMF-351817CB**

Baffles: ✓

Muffler Inlet: **Left-1.75" & Right-1.75"**

Baffles Removable: ✓

Loud Level VS Stock: **8.5/6**

Fitment: **2018-UP Harley Softail Models**

Muffler Gasket: **2** (For Models with O.D. 1.5" Headers)

Sold in Units: **2**





## CUSTOM END CAPS:



Part #: 04B



Part #: 13C



Part #: 17B

PART#	DESCRIPTION	MSRP \$	PART#	DESCRIPTION	MSRP \$
HDSFMF-351813CC	Chrome Pipes W/ No. 13 Chrome tips	249	HDSFMF-351817CB	Chrome Pipes W/ No. 17 Black tips	249
HDSFMF-351804BB-TC	<b>Black Ceramic Coating</b> Pipes W/ No. 04 Black tips	289	HDSFMF-351817BB-TC	<b>Black Ceramic Coating</b> Pipes W/ No. 17 Black tips	289

## Short GP Mufflers W/O Baffles For Softail Partial Models



- . Distinct Shark preying-on style=Good Looking.
- . Stright Pipe Design= Thunder Loud.
- . Quality made pipes at a competitive price.
- . Easy to install.
- . Quiet-baffles sold separated.

Part #: HDSFMF-GP01B / HDSFMF-GP02B

Muffler Inlet I.D.: Left-1.75" & Right-1.75"

Loud Level VS Stock: 9/6

Sold in Units: 2

Baffles: ✕

01 Fitment: **01B FOR 1986-2017 Harley Softail Partial Models.**

02 Fitment: **02B FOR 2018-UP Harley Softail Partial Models.**

**(Please sure you love a thunderous sound before purchasing.)**

PART#	DESCRIPTION	MSRP \$	PART#	DESCRIPTION	MSRP \$
HDSFMF-GP01C	Chrome GP pipes for 1986-2017 Softail models	99	HDSFMF-GP01B	Black GP pipes for 1986-2017 Softail models	99
HDSFMF-GP02C	Chrome GP pipes for 2018-up Softail models	99	HDSFMF-GP02B	Black GP pipes for 2018-up Softail models	99



# SLIP ON MUFFLERS

FOR HARLEY DAVIDSON STREET AND STREET ROD MODELS



## 4.0" Loud Rolling Sound Mufflers With Baffles And Tips

- . Rolling massive sound for your street bike.
- . Make your Harley had the deep bass again.
- . Perform better, look attractive.
- . 1/2 budget getting a new voice=Every penny worth.
- . Fit perfectly, install easily.



Outlet View

Part #: HDSTMF-401408BB

Muffler Inlet: 2.125"

Loud Level VS Stock: 8/6

Sold in Units: 1

Baffles: ✓

Fitment: 2014-UP Harley Street 500, 750, Or Street Rod Models.

PART#	DESCRIPTION	MSRP -\$
HDSTMF-401408BB	Black W/ No.08 Black Tips	179

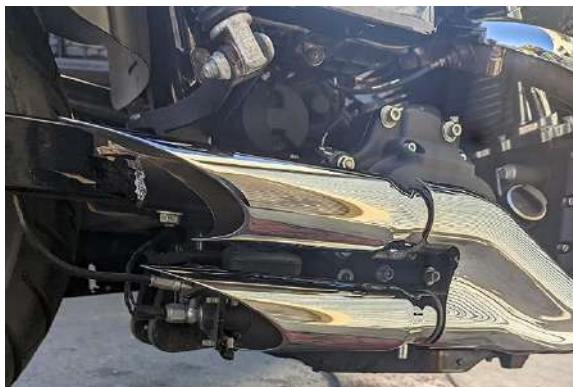
# SLIP ON MUFFLERS

FOR HARLEY DAVIDSON DYNA PARTIAL MODELS

## Short GP Mufflers W/O Baffles For Dyna Partial Models



- . A whole new world opens to your Harley Dyna.
- . Distinct Shark Design with a very loud nice sound.
- . Quality made short pipes at a competitive price.
- . Easy to install.
- . Quiet-baffles sold separated.



Part #: HDDYMF-GP01B / C

Muffler Inlet I.D.: Left-1.75" & Right-1.75"

Loud Level VS Stock: 9/6

Sold in Units: 2

Baffles: ×

Baffles Available: Yes. (Sold separated.)

Fitment: For 1991-2017 Harley Davidson Dyna Partial Models.

(Please sure you love a thunderous sound before purchasing.)

PART#	DESCRIPTION	MSRP -\$	PART#	DESCRIPTION	MSRP -\$
HDDYMF-GP01C	Chrome GP pipes for 1991-2017 Dyna partial models	99	HDDYMF-GP01B	Black GP pipes for 1991-2017 Dyna partial models	99



# SLIP ON MUFFLERS

FOR INDIAN SCOUT 2015-UP MODELS



## 3.0" Fine Rich Sound Mufflers With Baffles And Tips

- . Rumble richer tone than stock.
- . Say good bye to a sewing machine sound.
- . Night and day difference from stock pipes.
- . Half cost to get the sound amazing.
- . Fit perfect and look custom made.

Part #: **INMF-3002CB / INMF-3020BB**

Muffler Inlet: **Left-1.75" & Right-1.75"**

Loud Level VS Stock: **8/6**

Sold in Units: **2**

Baffles: **✓**

Baffles Removable: **✓**

Fitment: **For 2015-UP Indian Scout Partial Models**

PART#	DESCRIPTION	MSRP -\$
INMF-3002CB	Chrome Pipes W/ No. 02 Black Tips	219
INMF-3020CB	Chrome Pipes W/ No. 20 Black Tips	219

PART#	DESCRIPTION	MSRP -\$
INMF-3002BB	Black Pipes W/ No.02 Black Tips	219
INMF-3020BB	Black Pipes W/ No.20 Black Tips	219



## Thunder Loud Sound Non-baffled Short Gp Slip-on Mufflers

- . Loud and fantastic sound for your Indian Scout.
- . Look clean, sound amazing.
- . Quality made at a reasonable price.
- . A little cost, a big gain.
- . Extremely easy to install.

Part #: **INSCMF-GP01C / B**

Muffler Inlet: **Left-1.75" & Right-1.75"**

Loud Level VS Stock: **9/6**

Sold in Units: **2**

Baffles: **X**

Quiet Baffles Availavle: **Yes. (Sold separated.)**

Fitment: **For 2015-UP Indian Scout Partial Models**

PART#	DESCRIPTION	MSRP -\$
INSCMF-GP01C	Chrome GP Pipes for 2015-up Scout partial models	99

PART#	DESCRIPTION	MSRP -\$
INSCMF-GP01B	Black GP Pipes for 2015-up Scout partial models	99



# SLIP ON MUFFLERS

FOR INDIAN SCOUT 2015-UP PARTIAL MODELS

## NEW! 4.0" Fine Rich Sound Mufflers With Baffles And Tips



- . Day and night difference from the stock pipes.
- . Turn a sewing machine tone to a nice deep one.
- . Amazing sound, attractive appearance.
- . Very-well made for the price.
- . Fit perfect and look custom made.



Part #: INSCMF-401525BB / INSCMF-401525CB

Muffler Inlet: Left-1.75" & Right-1.75"

Loud Level VS Stock: 8.5/6

Sold in Units: 2

Baffles: **Built-in**

Baffles Removable: **Yes.**

Fitment: **For 2015-UP Indian Scout Partial Models**



PART#	DESCRIPTION	MSRP -\$
INSCMF-401525BB	Black Pipes with Baffle & No.25 Black End Cap	299

PART#	DESCRIPTION	MSRP -\$
INSCMF-401525CB	Chrome Pipes with Baffle & No.25 Black End Cap	299





# SLIP ON MUFFLERS

FOR INDIAN 2014-UP BAGGER, CRUISER PARTIAL MODELS



## 4.0" Amazing Rich Rumble Sound Mufflers With Baffles and Tips

- . Make the bike a real American V-twin voice.
- . Louder than stock, but not overly.
- . Unique the bike in attractive appearance & sound.
- . No-overpay for a big name.
- . Easy to install and perfectly matched.



Part #: **INMF-4020BB / INMF-4020CC**

Baffles: ✓

Muffler Inlet: **Left-1.75" & Right-1.75"**

Baffles Removable: ✓

Loud Level VS Stock: **8/6**

Sold in Units: **2**

Fitment: **2014-UP Indian partial models: CHIEF, CHIEFTAIN, SPRINGFIELD, CHALLENGER, and ROAD MASTER.**

**NOT FOR:** 2022 CHIEF, CHIEF DARKHORSE, CHIEF BOBBER, BOBBER DARKHORSE, & SUPER CHIEF LIMITED MODELS (**Both mufflers on the right side-X**).

### CUSTOM END CAPS:



Part #: 20B



Part #:20C



Part #: 25B

PART#	DESCRIPTION	MSRP -\$
INMF-4020CC	Chrome W/ No. 20 Chrome tips	339
INMF-4025CB	Chrome W/ No. 25 Black tips	339

PART#	DESCRIPTION	MSRP -\$
INMF-4020BB	Black W/ No. 20 Black tips	339
INMF-4025BB	Black W/ No. 25 Black tips	339



# SLIP ON MUFFLERS

FOR KAWASAKI 2009-UP VULCAN 1700 MODELS



## 4.0" Amazing Rich Rumble Sound Mufflers With Baffles and Tips

- . Nice deep rumble tone.
- . Louder than stock, but not overly.
- . Gain compliments for good looking & performance.
- . No-overpay for a big name.
- . Easy to install and perfectly matched.



Part #: **KWMF-0108CB / KWMF-0120CC**

Baffles: ✓

Muffler Inlet: **Left-1.75" & Right-1.75"**

Baffles Removable: ✓

Loud Level VS Stock: **8/6**

Sold in Units: **2**

Muffler Gasket for neck pipe: **1**

Fitment: **2009-UP Kawasaki Vulcan 1700, Nomad Vaquero, Voyager Models**

### ALTERNATIVE END CAPS:



No.: 08B

No.: 18B

No.: 20B

No.: 20C

No.: 21C

PART#	DESCRIPTION	MSRP -\$	PART#	DESCRIPTION	MSRP -\$
KWMF-0108CB	Chrome W/ No. 08 Black tips	469	KWMF-0108BB	Black W/ No. 08 Black tips	469
KWMF-0118CB	Chrome W/ No. 18 Black tips	469	KWMF-0120CC	Chrome W/ No. 20 Chrome tips	469
KWMF-0120CB	Chrome W/ No. 20 Black tips	469	KWMF-0121CC	Chrome W/ No. 21 Chrome tips	469



# SLIP ON MUFFLERS

FOR HONDA GOLD WING MODELS

## 4.0" Amazing Rich Rumble Sound Mufflers With Baffles and Tips



- . Nice rich rumble tone for your Gold Wing.
- . Louder than stock, but not overly.
- . Gain compliments for looking & performance.
- . No-overpay for a big name.
- . Easy to install and perfectly matched.

Part #: **HOMF-0120CC**

Muffler Length: **31" with End Cap**

Muffler Inlet: **Left-1.75" & Right-1.75"**

Loud Level VS Stock: **8/6**

Hardware: **Default**

Surface Finish: **Triple-layer Chroming**

PART#	DESCRIPTION	MSRP -\$
HOMF-0120CC	Chrome Pipes W/ No. 20 Chrome tips	449
HOMF-0120BB-TC	Black Ceramic Coating (USA-CERAKOTE) Pipes W/ No. 20 Black tips	499

Baffles: **Built-in**

Baffles Removable: **✓**

Sold in Units: **2**

Fitment: **For Honda Gold Wing GL1800 2012-2017, and for Honda Gold Wing F6B 2013-2017 models.**

Mounting Tabs: **Built-in**

PART#	DESCRIPTION	MSRP -\$
HOMF-0125CB	Chrome Pipes W/ No. 25 Black tips	449
HOMF-0125BB-TC	Black Ceramic Coating (USA-CERAKOTE) Pipes W/ No. 25 Black tips	499

## Throaty Rumble Sound Mufflers With Baffles and Tips



- . Nice rich rumble tone for your Gold Wing.
- . Louder than stock, but not overly.
- . Gain compliments for looking & performance.
- . No-overpay for a big name.
- . Easy to install and perfectly matched.

Part #: **HOMF-02B**

Muffler Length: **24" with Oval End**

Muffler Inlet: **Left-1.75" & Right-1.75"**

Loud Level VS Stock: **7.5/6**

Hardware: **Default**

Surface Finish: **Black Coating**

PART#	DESCRIPTION	MSRP -\$
HOMF-02B	Black Pipes With Baffles	399

Baffles: **Built-in**

Baffles Removable: **N/A**

Sold in Units: **2**

Fitment: **For Honda Gold Wing GL1800 2018-later**

Heat Shield: **Utilizing with stock ones.**

Mounting Tabs: **Built-in**

PART#	DESCRIPTION	MSRP -\$
-------	-------------	----------



## SLIP ON MUFFLERS

FOR YAMAHA ROYAL STAR PARTIAL MODELS



### 4.4" Megaphone Style Mufflers With Baffles And Tips

- . Loud pipes save lives.
- . Make your Yamaha sounds like a Harley.
- . Perform better, look attractive.
- . 1/2 cost get a new voice=Every penny worth.
- . Fit perfectly, install easily with a brackets kit.

Part #: YAMF-0205CC / YAMF-0208CB

Muffler Inlet: **Both 1.75"**

Loud Level VS Stock: **8/6**

Sold in Units: 2

Baffles: **Built-in**

Fitment: For YAMAHA 1999-2013 Royal Star Partial Models, Such as  
Venture, Tour Deluxe, XVZ1300 CT/CTS/CTM/TF/TFS/TFM Models



PART#	DESCRIPTION	MSRP -\$	PART#	DESCRIPTION	MSRP -\$
YAMF-0205CC	Chrome Pipes W/ No.05 Chrome tips and Brackets	299	YAMF-0208CB	Chrome Pipes W/ No.08 Black tips and Brackets	299

## SLIP ON MUFFLERS

FOR BMW R18 PARTIAL MODELS

### 4.0" Mufflers W/ Baffles For BMW R18 CLASSIC

- . Make your bike to be heard while in the traffic.
- . Louder than stock, but not overly.
- . Boost compliments for your bike.
- . Quality made short pipes at a competitive price.
- . Easy to install and perfectly matched.

Part #: BMMF-0125BB-TC / BMMF-0125CB

Muffler Inlet I.D.: **Both 1.75"**

Muffler Length:

Loud Level VS Stock: **9/6**

Baffles: **Built-in**

Sold in Units: 2



Fitment: **Only for** BMW R18 Classic 2020, 2021, 2022, 2023, 2024 **(With Soft Saddle Bags.)**





PART#	DESCRIPTION	MSRP -\$	PART#	DESCRIPTION	MSRP -\$
BMMF-0125CB	Black pipes W/ No.25 Black Tips for BMW R18 Classic	449	BMMF-0125BB-TC	Chrome pipes W/ No.25 Black Tips for BMW R18 Classic	499

## 4.0" Mufflers W/ Baffles For BMW R18 B/T/ROCTANE



- . Make your bike to be heard while in the traffic.
- . Deep Harley V-twin Rumble sound.
- . Boost compliments for your bike.
- . Quality made short pipes at a competitive price.
- . Easy to install and perfectly matched.

Part #: **BMMF-0225CB**

Muffler Inlet I.D.: Both 1.75"

Sold in Units: 2

Loud Level VS Stock: 9/6

Baffles: **Built-in**

Hardware: **Defaulted**

Fitment: **For BMW R18 B (2021-2024), R18 T (2021-2024), R18 Roctane (2024) (With Solid Saddle Bags.)**



PART#	DESCRIPTION	MSRP -\$	PART#	DESCRIPTION	MSRP -\$
BMMF-0125CB	Chrome pipes for BMW R18 B/T/R	449	BMMF-0125BB-TC	<b>Black Ceramic Coating</b> pipes for BMW R18B/T/R	499

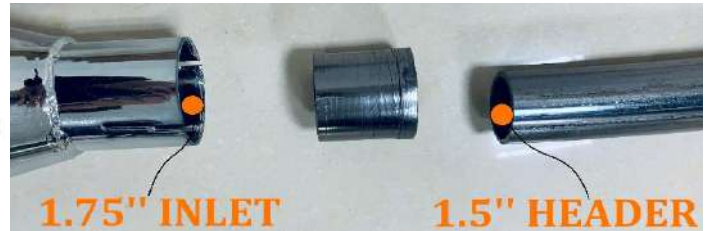


# UNIVERSAL SLIP ON MUFFLERS

UNIVERSAL FOR YAMAHA, VICTORY, INDIAN

## Thunder Loud Non-baffled Short Gp Universal Slip-on Muffler

- . 2 X loud pipe universal for bikes.
- . Deep rumble, amazing rich sound.
- . A little cost, a big gain.
- . Custom quality slip-on muffler.
- . Universal for 1.75" or 1.5" O.D. header pipes.



1.75" INLET

1.5" HEADER



Part #: **GP-01C / GP-01B**

Muffler Inlet: **1.75"**

Muffler Length: **7-1/4" MIN ~ 10-1/4" MAX**

Loud Level VS Stock: **9/6**

Clamp: **1 pce (For 1.75" Inlet)**

Muffler Gasket Adapter: **1 pce (Optional, Not-included)**

Baffles: **None-baffled**

Quiet Baffle Available: **Yes. (Sold separated.)**

Sold in Unit: **1 pce**

Fitment: **Universal for O.D.-1.75" Headers, or O.D.-**

**1.5" Head Pipes with Muffler Gasket Adapter.**

**Please sure the inlet size is right for your bike.**

PART#	DESCRIPTION	MSRP -\$
GP-01C	Chrome GP Pipes	59.99

PART#	DESCRIPTION	MSRP -\$
GP-01B	Black GP Pipes	59.99





**[WWW.SHARKROAD.COM](http://WWW.SHARKROAD.COM)**