



Follow us on FaceBook, prompt customer service.

THANK YOU FOR YOUR ORDER AND SUPPORT.

BEFORE INSTALLING, PLEASE CHECK:

The year of your bike is 1995-2016, or 2017-Up.

MAKE SURE YOU GET THE RIGHT SIZE OF THE MUFFLER FOR YOUR TOURING.

1. INLET SIZE.

FOR **1995-2016** HARLEY TOURING: LEFT INLET-1-3/4", **RIGHT** INLET-1-3/4".

FOR **2017-UP** HARLEY TOURING: LEFT INLET-1-3/4", **RIGHT** INLET-2-1/2".



FOR 1995-2016 TOURING STOCK HEADERS

FOR 2017-UP TOURING STOCK HEADERS

2. BRACKET POSITION.

Then length from the inlet to bracket installing holes are different.



FOR 1995-2016 TOURING STOCK HEADER



FOR 2017-UP TOURING STOCK HEADER

WARNING:

This muffler only fits Harley Davidson OEM/Stock head pipe.

Not compatible with aftermarket brands headers like Vance Hines, Cobra, etc.

Carefully check before buying, please.

IF THE PIPE IS NOT RIGHT FOR YOUR BIKE, HERE ARE SOLUTIONS:

- 1. CONTACT THE SELLER ON THE PLATFORM YOU PLACED THE ORDER TO PROCEED A RETURN AND REFUND.**
- 2. PROVIDE THE ORDER NUMBER AND CONTACT US ON FACEBOOK TO PROCEED THE RETURN AND REFUND.**
- 3. SEND US AN EMAIL: support@sharkroad.com**

ITEM SUPPLIED:

- 1-LEFT SLIP-ON MUFFLER
- 1-RIGHT SLIP-ON MUFFLER
- 1-A PACK OF HARDWARE
- 1-INSTALLATION INSTRUCTION

FITMENT:

HD TOURING MODELS STOCK HEAD PIPES
NOT FOR 2 INTO 1 SYSTEM OR TRIKE,
TRI-GLIDE, OR FREEWHEELER MODELS.



Read all instructions carefully and completely before installing your new slip-on mufflers.

Make sure that THE BIKE is completely cooled down before ANY OPERATION.

SUGGESTED TOOLS:



15MM LONG HANDLE SOCKET



13MM REGULAR SOCKET WITH EXTENSION



8MM WRENCH

6MM HEX DRIVER



**INSTALLATION INSTRUCTIONS
FOR MEGAPHONE 4.4" OR 4.0" OR 4.5" SLIP-ON MUFFLERS:
NO.: V-2-071621**

1. Before taking any actions on your bike. Please sure your bike is right parked. Do not be able to fall down when you are pulling or installing the exhausts.

Note: According to various bike conditions or working site issues, we are not responsible for any injury when installing the pipes or exhausts.

2. Before installing the new SHARKROAD mufflers on, we need to remove the stock slip-on mufflers first.

3. Release the quarter-turn pins (2 pins/bag) of the saddlebags, then remove them carefully. Put them on a carpet or some sort of soft surface from scratch.

(Shown in Figure 1)

4. Use a 15mm (9/16") long handle socket to loosen the exhaust clamps. (Shown in **Figure 2**) Use a 13mm (1/2") regular socket to loosen the nuts for bracket plates holding the mufflers. (Shown in **Figure 3**)

5. Carefully remove the muffler without hurting the head pipe; Slightly twist it and pull the muffler out until it slides off the head pipe. (Shown in **Figure 4**)

6. Get the clamps off the stock mufflers. Mount them into the new SHARKROAD mufflers head. **(Figure 5)**

NOTE: The muffler clamps should be flush with the end of the muffler when tightened.

7. Slide the new mufflers back to the headpipes until the mounting holes align. Make sure the expansion slots were totally covered after mufflers go onto the head pipe.

NOTE: make sure the clamp spacer is not over the slots. The slots need to be covered by the clamp band so that it seals the slots properly. Rotate the clamp if necessary.

8. Fasten but not tighten the mufflers using the mounting hardware comes with the mufflers.

9. Make sure the mufflers are in straight line with the mounting holes. Otherwise, you might not be able to get the muffler bracket mounting holes aligned with the bracket

Note: If the muffler slides to the saddle bag or the axel a little more after installation. Make sure the header pipe is in the straight line first. (Figure 6)

10. Check all gaps and alignments then tighten the mounting bolts. Tighten the muffler clamps. **(Figure 7) (Figure 8)**

11. After that, install the saddle bags back to the bike. **(Figure 9)**

12. Finally, be sure to wipe all fingerprints or oil stains off after installation, before starting the engine. **(Figure 10)**

Note: If you leave a fingerprint to it, the chrome may discolor when it heats up!



Figure 1



Figure 2

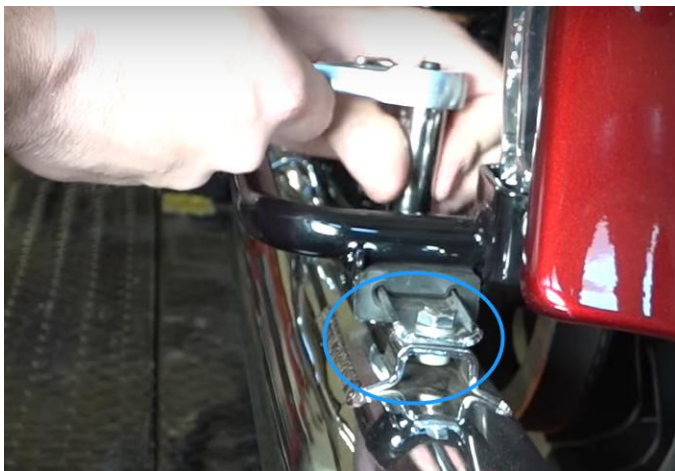


Figure 3



Figure 4



Figure 5



Figure 7



Figure 9

Figure 6



Figure 8



Figure 10

**Be sure to tighten all hardware before starting your engine.
Retighten after the first 100 miles.**

Discoloration: DOES NOT WARRANTY ANY CHROME EXHAUST PRODUCTS AGAINST DISCOLORATION!

Discoloration is not a defect in chrome. All chrome exhaust systems will turn color. Chrome discoloration is a result of heat. The more heat the chrome is exposed to, the quicker and more severe the discoloration will be.

Tuning: It is strongly recommended by SHARKROAD. Better flowing, less restrictive exhaust will require more intake, so please consider upgrading your air cleaner along with your fuel-management system. Working with high-flow intake, Fuel Management system, and correct profession re-mapping, the bike would gain a more better performance.

C.A.R.B.: California does not allow the use of aftermarket exhaust systems that remove original equipment catalyts, (except for racing use only) unless the Air Resources Board has issued an Executive Order for that system.

Return: When you want to return, please contact us in 72 hours after received the product, so we can help you out immediately. We only accept return in 30 days after your order. International Return is not acceptable. For return shipping cost to our warehouse, If the product have quality or shipping damage issue, We will send you shipping label or pay the cost after you send out. If you don't like the product or buy by mistake, Buyer should stand this shipping cost.

Warranty: SHARKROAD products are warranted for one year against defects in material and workmanship. This warranty does not cover chrome discoloration or rust. Also SHARKROAD will not warranty any abused, misused, improperly installed or modified system.

Wearing a helmet while riding is always recommended. Please never go for a ride while under the influence of alcohol and/or drugs. Enjoy the new voice and the fresh look of your motorcycle and please ride safely.