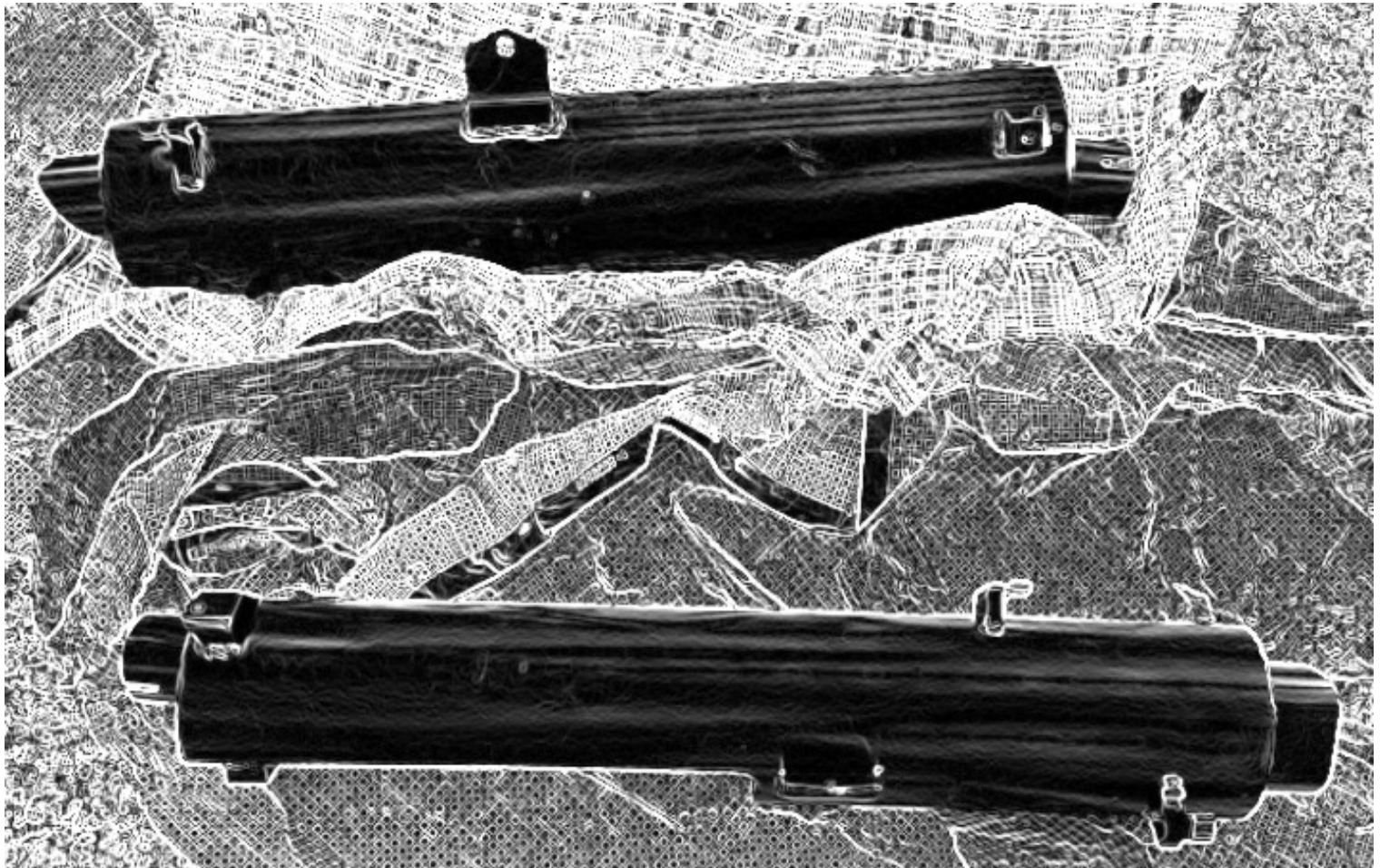




Warning: Our pipes are only for off-road racing use. These pipes are NOT LEGAL FOR SALE OR USE IN CALIFORNIA ON ANY POLLUTION CONTROLLED MOTOR VEHICLES.

Warning: This muffler only fit GOLDWING 2018-later Stock header pipes. If you have aftermarket headers, please check the muffler inlet with your header inside pipe before install.



ITEM SUPPLIED:

- 1-LEFT SLIP-ON MUFFLER
- 1-RIGHT SLIP-ON MUFFLER
- 1-A PACK OF HARDWARE
- 1-INSTALLATION INSTRUCTION

FITMENT:

FOR 2018-LATER GOLD WING MODELS

SUGGESTED TOOLS:



15MM LONG HANDLE SOCKET



8MM WRENCH



Make sure that THE BIKE is completely cooled down before ANY OPERATION.

INSTALLATION INSTRUCTIONS FOR HONDA GOLDWING 2018-LATER MODELS' SLIP-ON MUFFLERS:

Please use the bolts and nuts come with the pipes.

1. Before doing any actions to your bike. Please sure your bike is right parked. Do not easy to fall down when you are pulling or installing the exhausts.
2. Before installing the new pipes. We need to remove the stock slip-on mufflers first.
3. Let's start with the right side exhaust. Use a tool to get the plastic plug out. Be careful do not broken the plug. And save it in a box for later re-use.
(Shown in Figure 1/2)
4. Next, please use a 5mm hex drive with boll head to loosen the bolt for the header heat shield.
(Shown in Figure 3)
5. Carefully push a little forward to unhook the front heat shield. And remove it.
(Shown in Figure 4/5)

6. Loosen the bracket screw underneath the saddlebag by using a long-handle 12mm socket. Please be careful when operating, do not scratch the saddlebag bottom. Please save the stock flat washer and screw for later re-use when installing the new one.

(Shown in Figure 6/7)

7. Use a 15mm regular socket to loosen clamp. Then it is able to remove the stock muffler with the heat shield.

(Shown in Figure 8/9)

8. Next, please remove the left side muffler with heat shield in the same way as the right side.

(Shown in Figure 10)

9. Loosen and distach the heat shield with the stock mufflers. And install the heat shield with the new muffler.

(Shown in Figure 11/12)

Be sure to wipe all fingerprints or oil stain on the mufflers before starting to insert it to the heat shield canister. If not, the coating may discolor when it heats up!

10. Please keep all the rubber for the new muffler use. Do not throw them away.

(Shown in Figure 13/14/15)

11. Then tighten the heat shield with the mufflers with a 5mm hex driver with boll end.

(Shown in Figure 16/17)

12. Now we can start to install the new right muffler. Please take the exhaust body in both hands and get a feel for its weight. You should be able to hook the bracket bolt to the bike, while using the other hand to finger tighten the bolt. If you find that you are unable to hold it with one hand, you may need to seek assistance from someone else during this step.

13. Glove the head pipe with new muffler, and align the bracket hanger hole. Use the stock washer and bolt, and a M8 nut coming with the new pipes. Stock pipes with the nut built-in on the mufflers. The new muffer bracket hanger is without nut for easier tighten.

(Shown in Figure 18/19)

14. Check the muffler is aligned properly and correctly before installing the front heat shield. Then tighten the muffler down to the end.

15. Double-check all gaps and alignments then tighten the mounting bolts and the muffler clamp.

16. Now, we can align the front heat shield with the 4 holders for it. And pull the front heat shield to make them attached correctly.

(Shown in Figure 20/21/22/23)

17. Then bolt the front heat shield with the exhaust, and tighten it. Insert and plug the bump back.

(Shown in Figure 24)

18. The same way as the right side to install the left side muffler and heat shield back.
(Shown in Figure 25/26/27/28/29/30/31)

19. Finally, be sure to wipe all fingerprints or oil stain off after installation, before start the engine.
(Shown in Figure 32)

Note: If you leave a fingerprint to it, the chrome of the heat shield may discolor when it heats up!

Figure 1



Figure 2



Figure 3



Figure 4



Figure 5



Figure 6



Figure 7



Figure 8



Figure 9



Figure 10

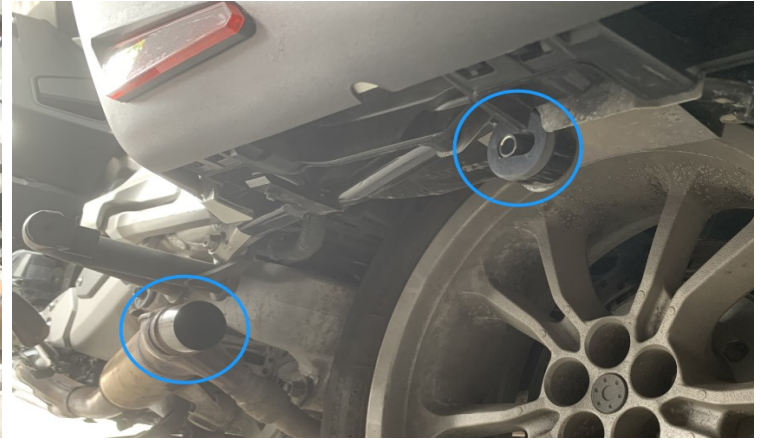


Figure 11



Figure 12

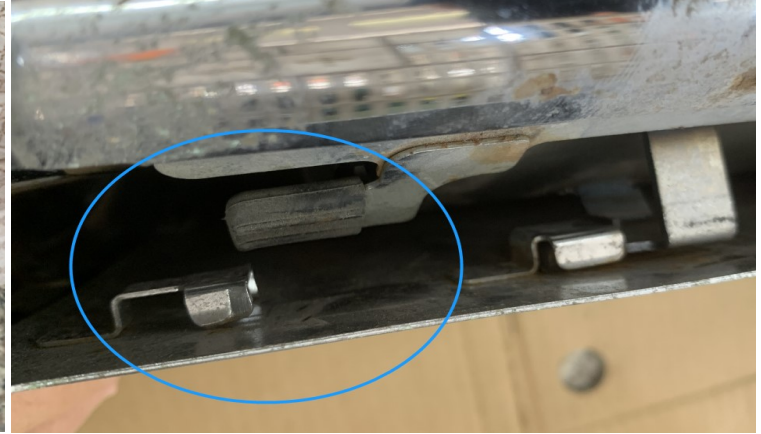


Figure 13



Figure 14



Figure 15



Figure 16

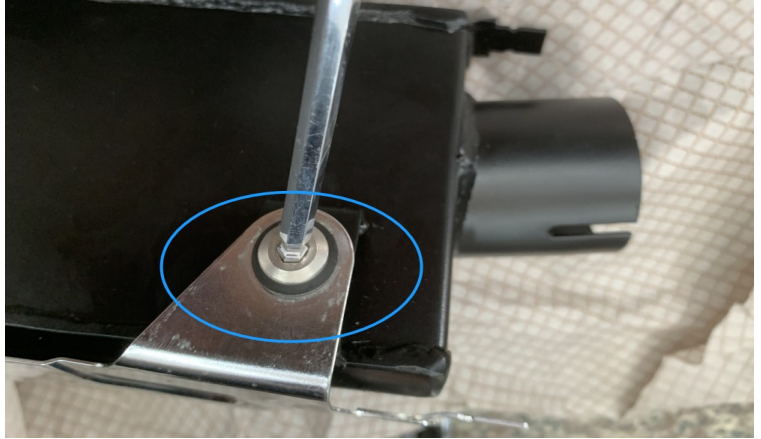


Figure 17



Figure 18



Figure 19



Figure 20



Figure 21

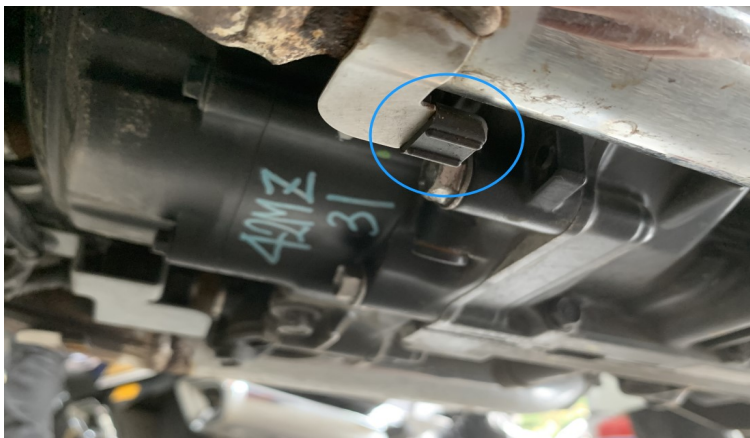


Figure 22



Figure 23



Figure 24



Figure 25



Figure 26



Figure 27

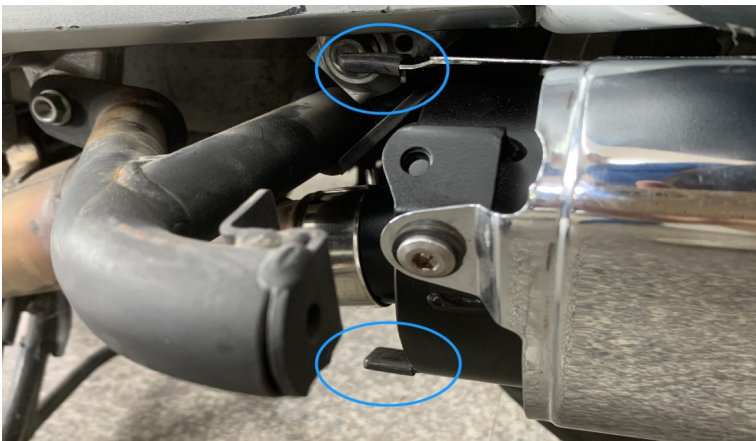


Figure 28



Figure 29



Figure 30



Figure 31



Figure 32



Be sure to tighten all hardware before starting your engine. Retighten after the first 100 miles.

Discoloration: DOES NOT WARRANTY ANY CHROME EXHAUST PRODUCTS AGAINST DISCOLORATION!

Discoloration is not a defect in chrome. All chrome exhaust systems will turn color. Chrome discoloration is a result of heat. The more heat the chrome is exposed to, the quicker and more severe the discoloration will be.

Tuning: It is strongly recommended by SHARKROAD. Better flowing, less restrictive exhaust will require more intake, so please consider upgrading your air cleaner along with your fuel-management system. Working with high-flow intake, Fuel Management system, and correct profession re-mapping, the bike would gain a more better performance.

C.A.R.B.: California does not allow the use of aftermarket exhaust systems that remove original equipment catalyts, (except for racing use only) unless the Air Resources Board has issued an Executive Order for that system.

Returns: When you want to return, please contact us in 72 hours after received the product so we can help you out immediately. We only accept return in 30 days after your order. International Return is not acceptable. For return shipping cost to our warehouse, If the product have quality or shipping damage issue, We will send you shipping label or pay the cost after you send out. If you don't like the product or buy by mistake, Buyer should stand this shipping cost.

Warranty: SHARKROAD products are warranted for one year against defects in material and workmanship. This warranty does not cover chrome discoloration or rust. Also SHARKROAD will not warranty any abused, misused, improperly installed or modified system.

Wearing a helmet while riding is always recommended. Please never go for a ride while under the influence of alcohol and/or drugs. Enjoy the new voice and the fresh look of your motorcycle and please ride safely.